

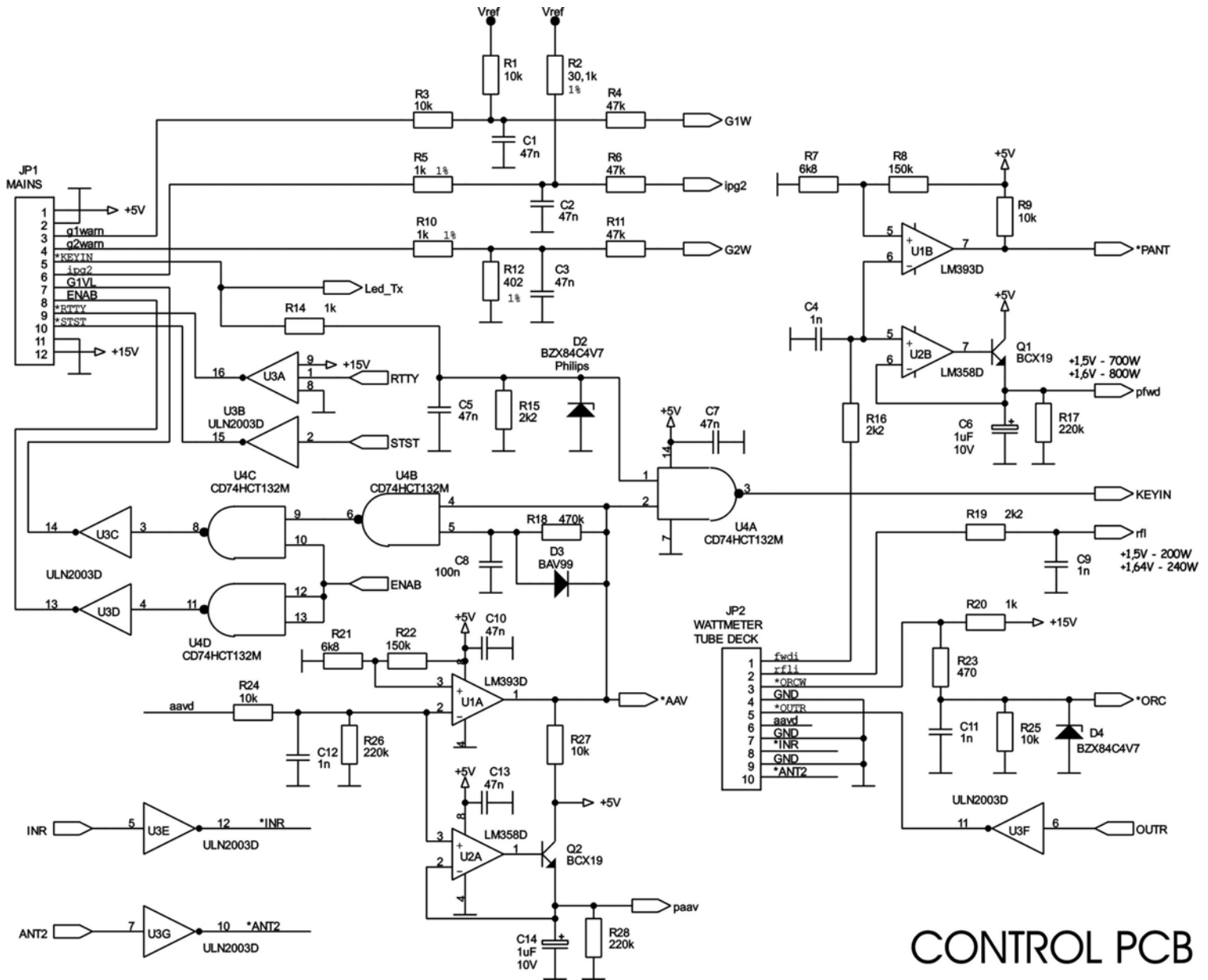


Exhibit 4: Schematics

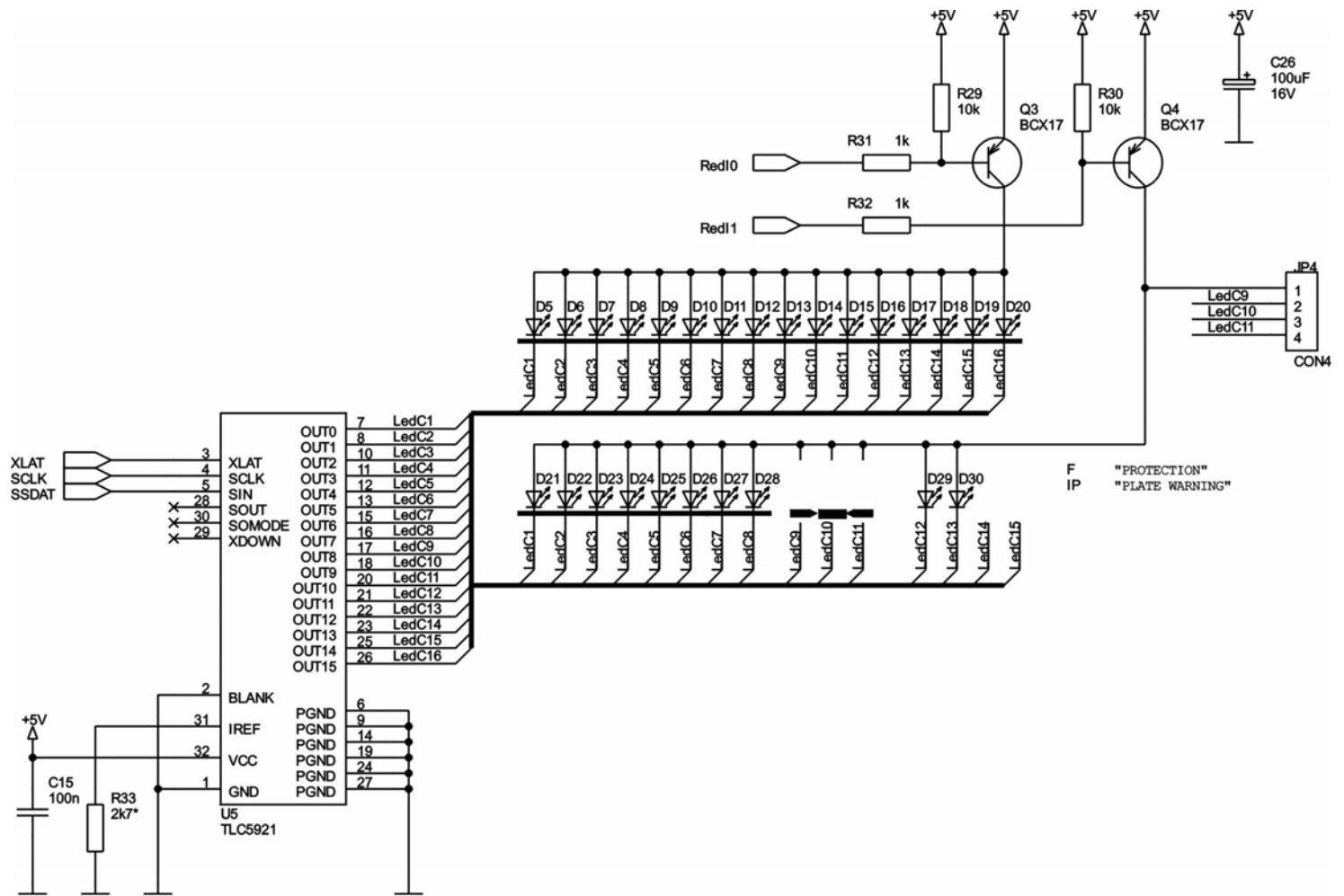
**External Radio Frequency
Power Amplifier ACOM 1010**

Model 1010

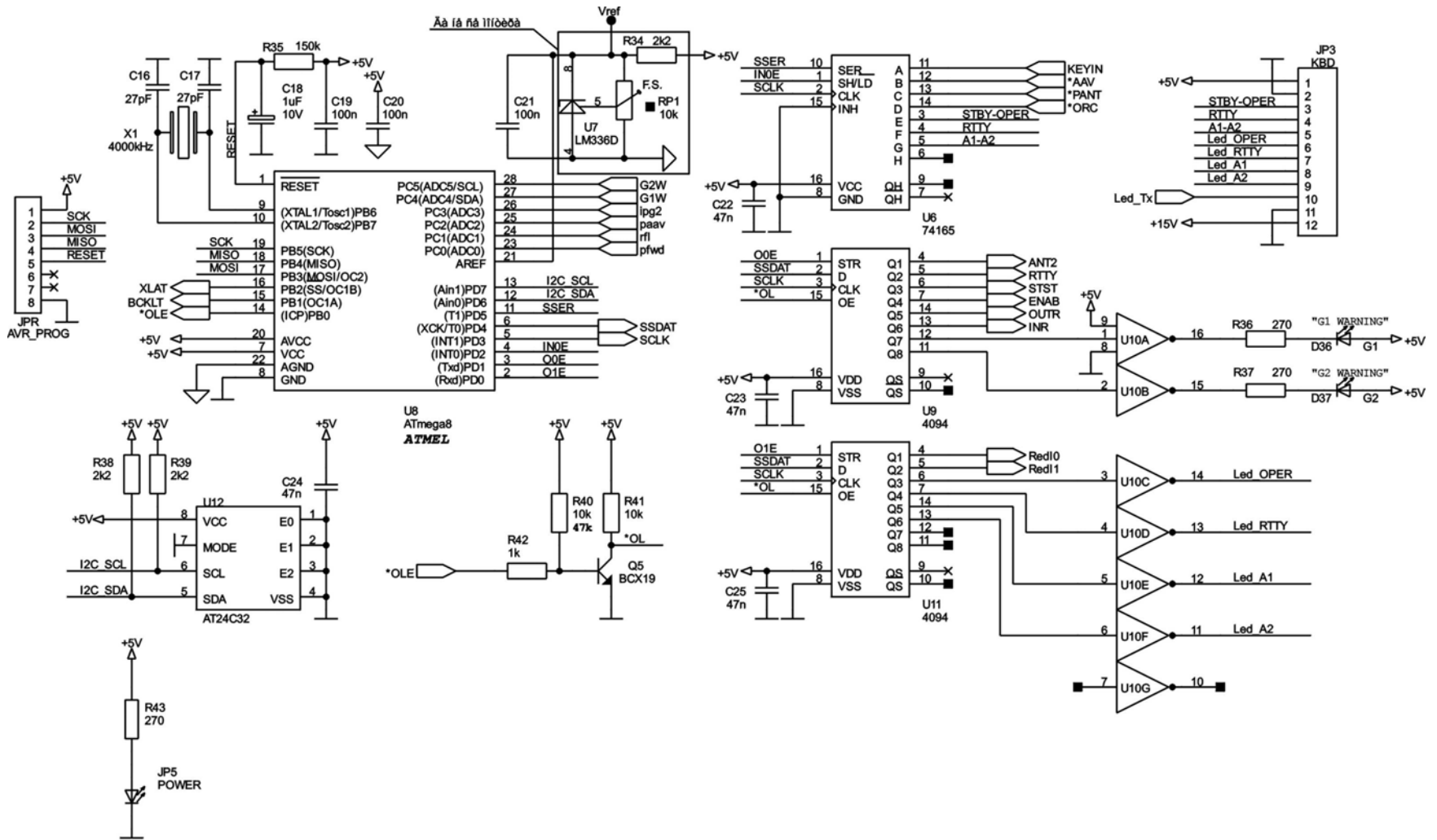
71 West street
Medfield, MA 02052
Tel: 508 359 5990
fax: 508 359 5989



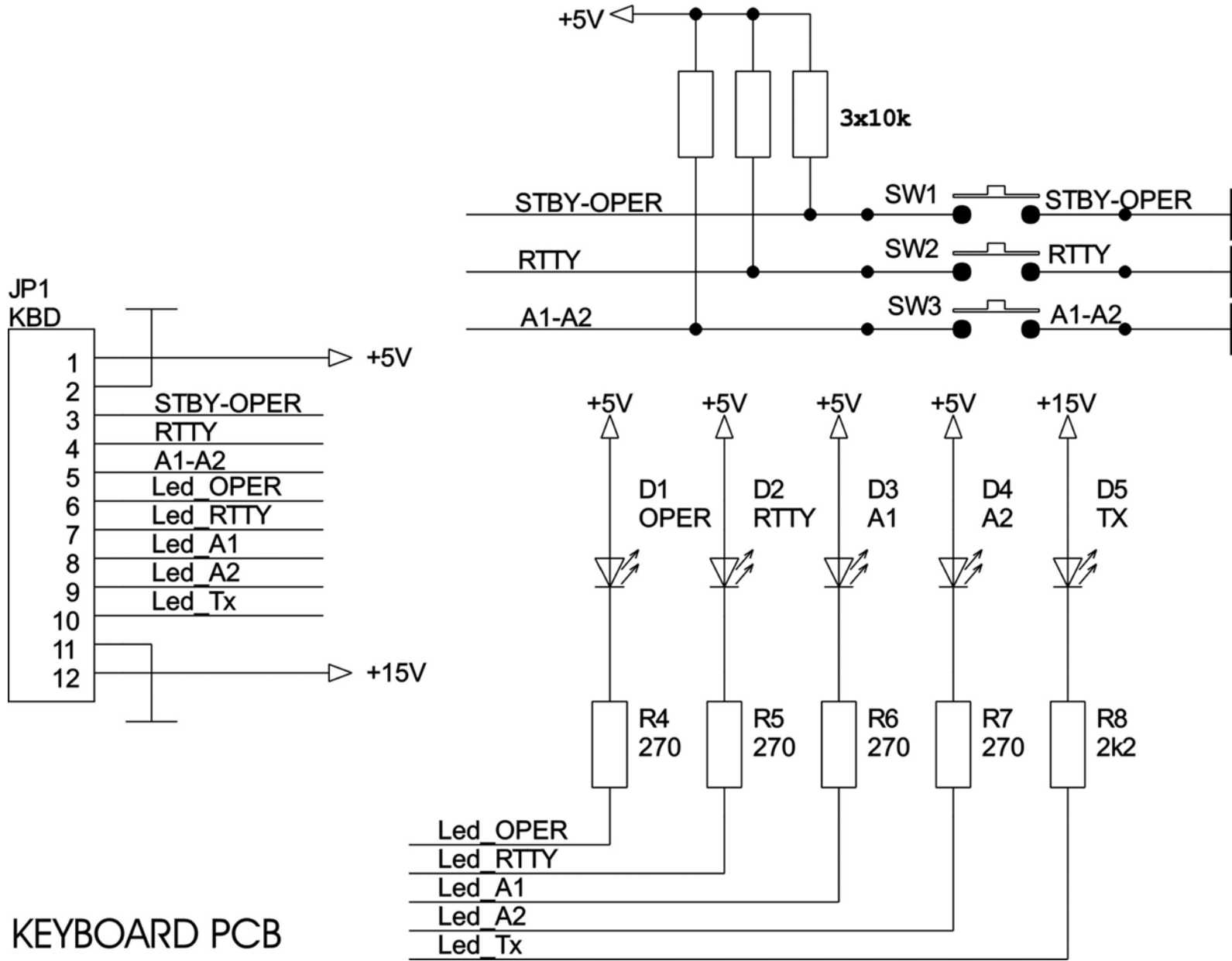
CONTROL PCB 1



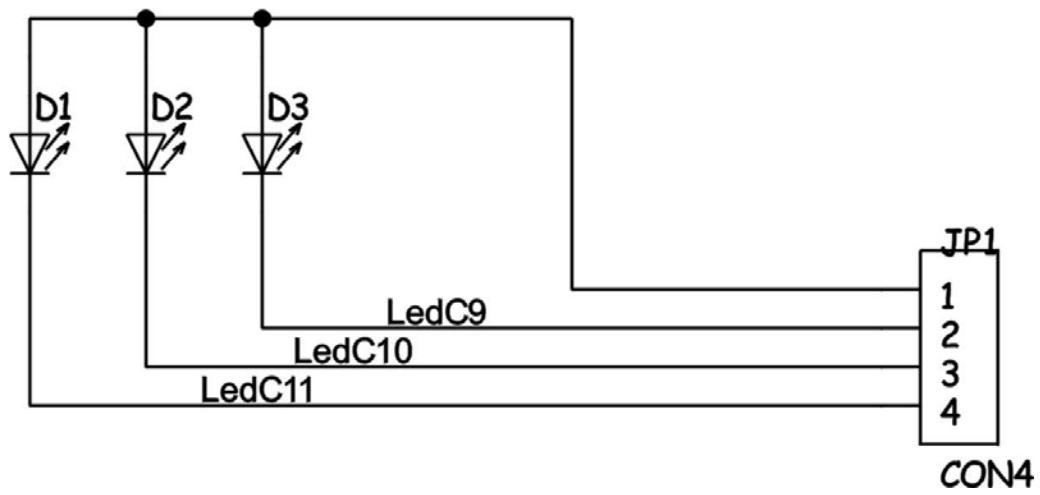
CONTROL PCB 2

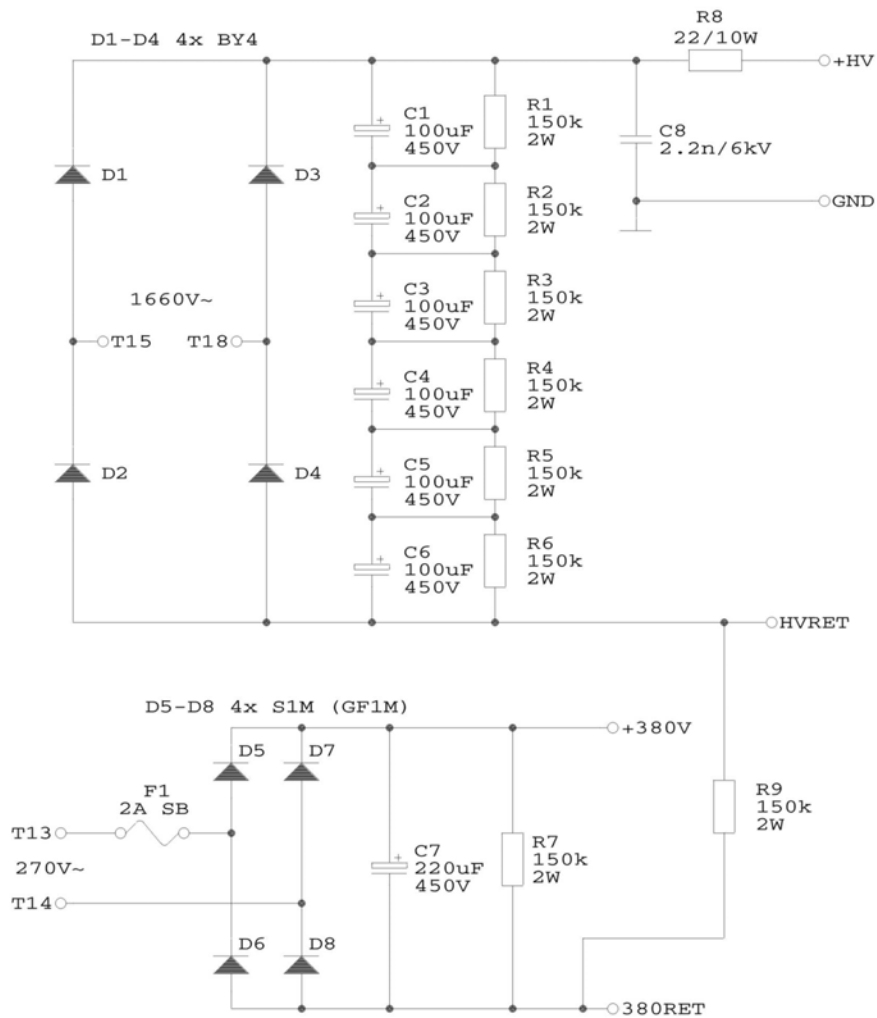


CONTROL PCB 3



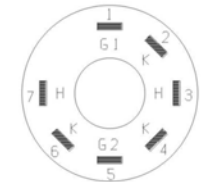
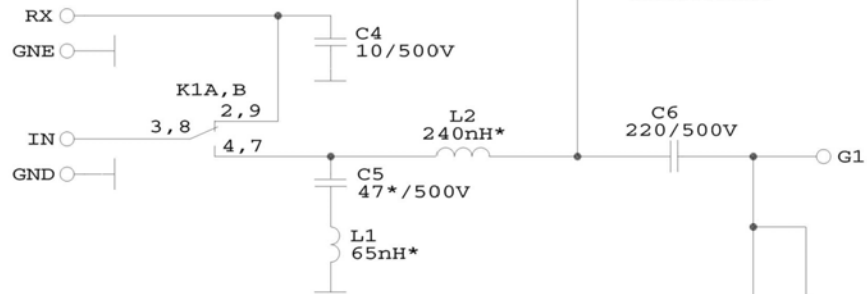
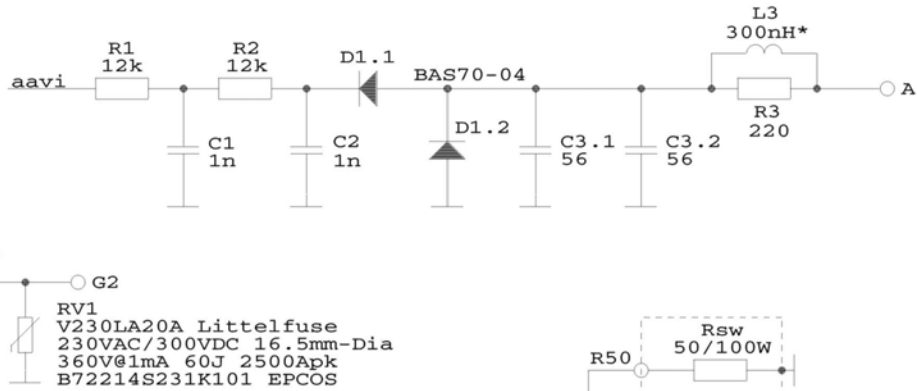
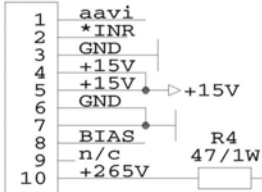
TRI LED PCB



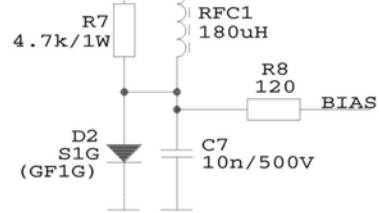
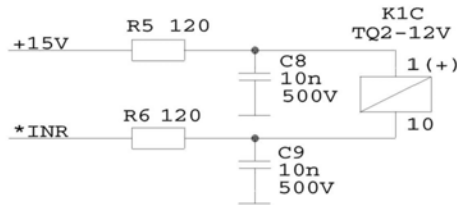


HV PCB

JP1
CONTROL
WATTMETER

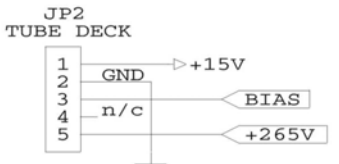
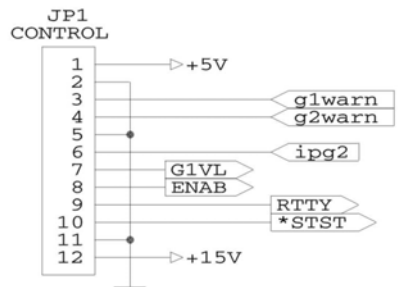
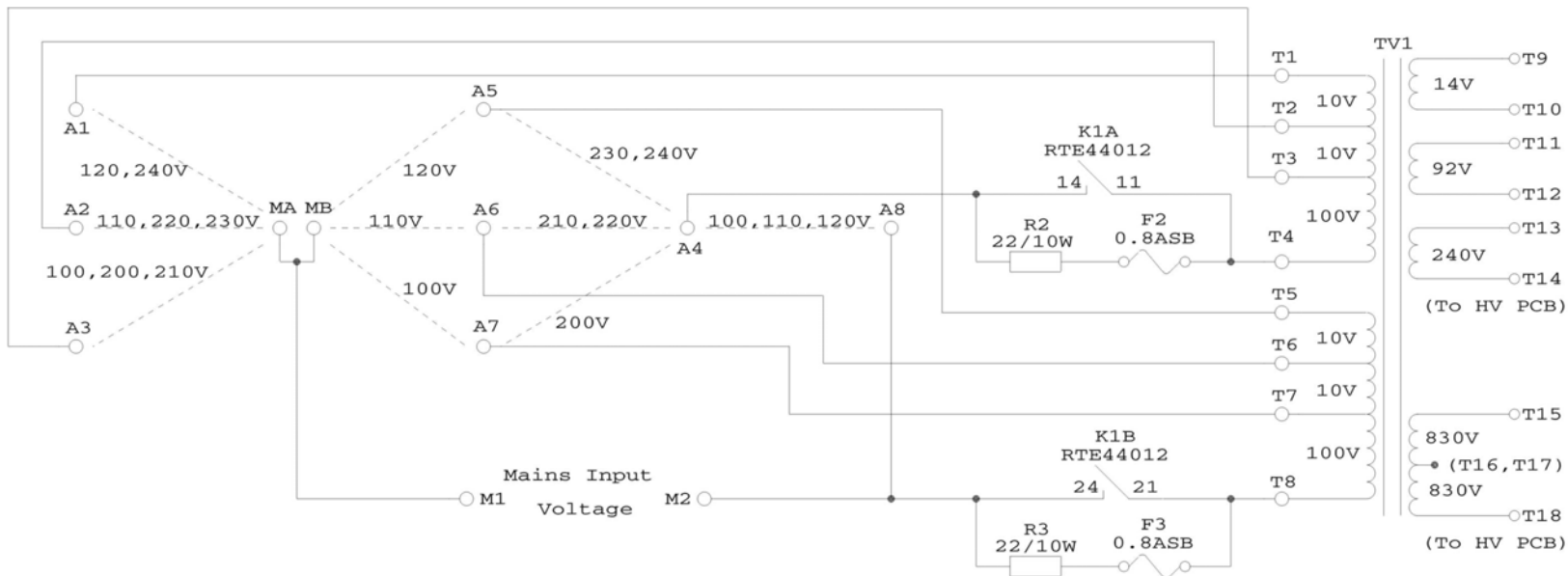


4CX800A (GU74B)
Bottom View



BAS70-04
TOP VIEW

INPUT PCB

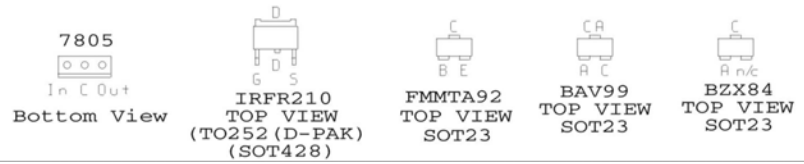
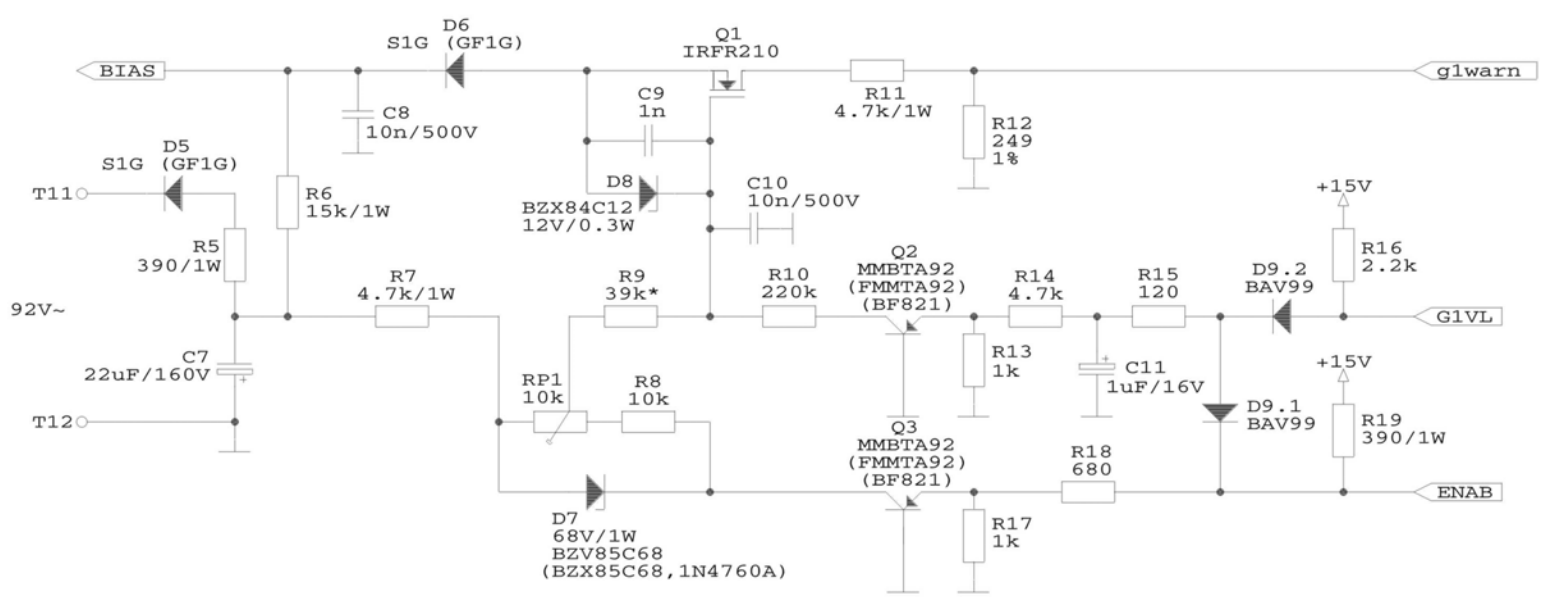
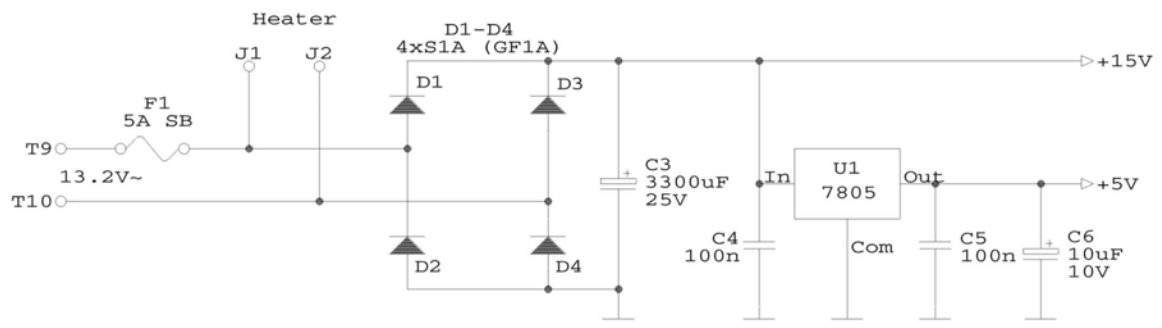


	o	o	o
R1	12	11	14
	nc	com	no
R2	22	21	24
	o	o	o

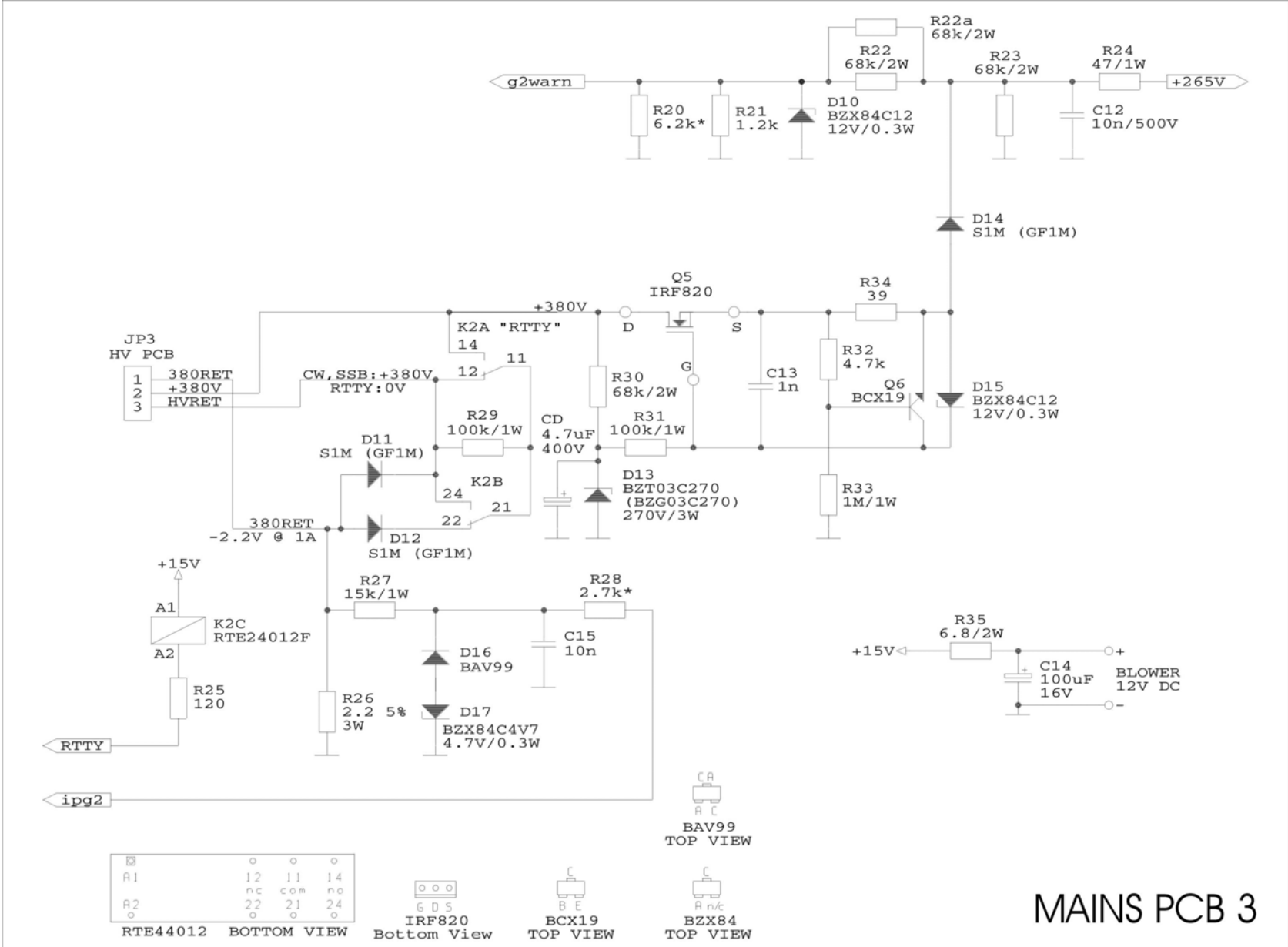
RTE44012 BOTTOM VIEW

Deleted: R1, C1, C2

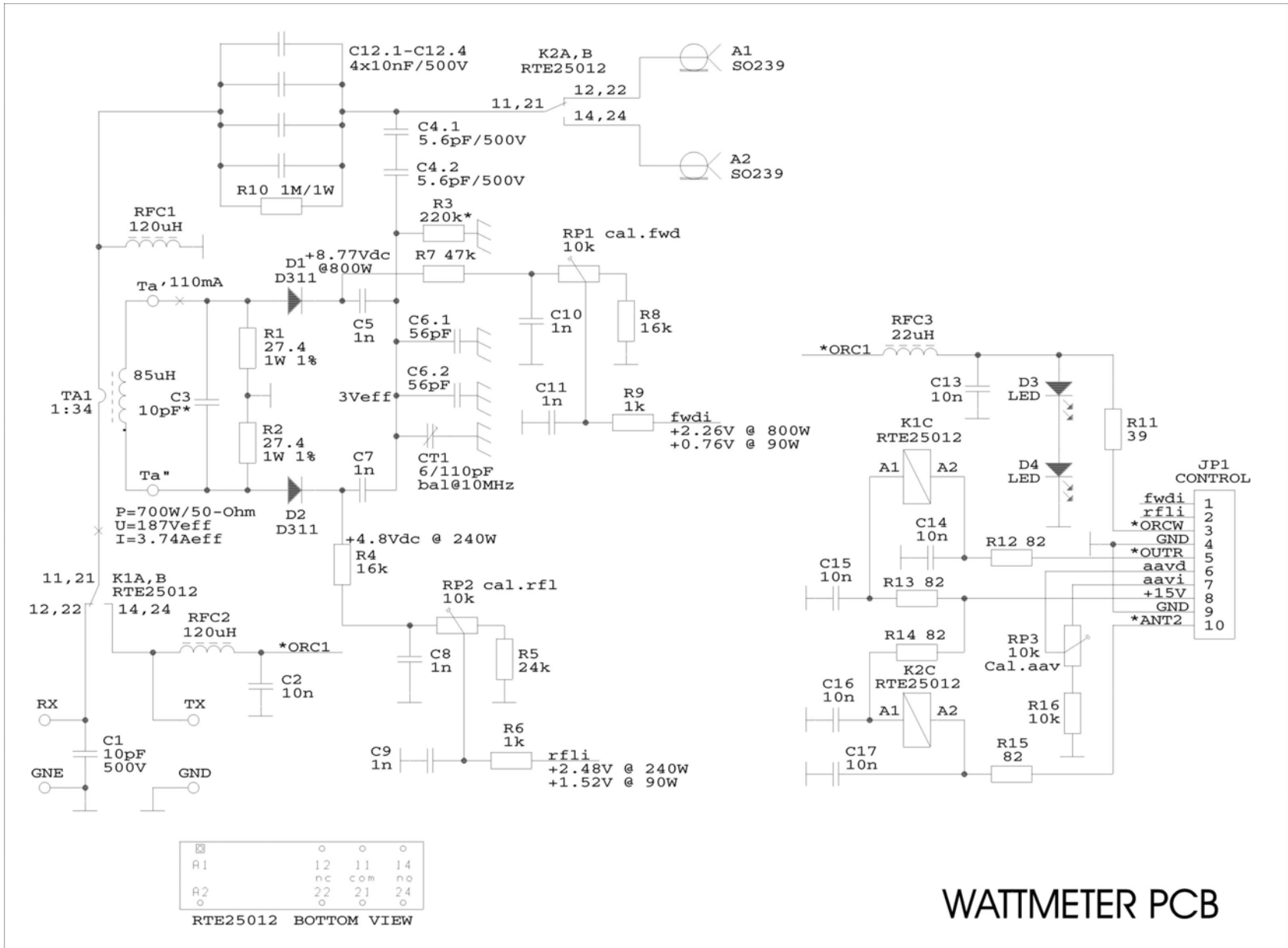
MAINS PCB 1



MAINS PCB 2



MAINS PCB 3



A1	12	11	14
A2	22	21	24

RTE25012 BOTTOM VIEW

WATTMETER PCB

Cable Harness Connections:

CONTROL JP1	Signal name	To:
1	+5V	MAINS JP1:1
2	GND	MAINS JP1:2
3	g1warn	MAINS JP1:3
4	g2warn	MAINS JP1:4
5	*KEYIN	Rear panel - KEYIN
6	ipg2	MAINS JP1:6
7	G1VL	MAINS JP1:7
8	ENAB	MAINS JP1:8
9	RTTY	MAINS JP1:9
10	*STST	MAINS JP1:10
11	GND	Rear panel - KEYIN
12	+15V	MAINS JP1:12
CONTROL JP2	Signal name	To:
1	fwdi	WATTMETER JP1:1
2	rflr	WATTMETER JP1:2
3	*ORCW	WATTMETER JP1:3
4	GND	WATTMETER JP1:4
5	*OUTR	WATTMETER JP1:5
6	aavd	WATTMETER JP1:6
7	GND	INPUT JP1:6
8	*INR	INPUT JP1:2
9	GND	-
10	*ANT2	WATTMETER JP1:10
MAINS JP1	Signal name	To:
1	+5V	CONTROL JP1:1
2	GND	CONTROL JP1:2
3	g1warn	CONTROL JP1:3
4	g2warn	CONTROL JP1:4
5	GND	-
6	ipg2	CONTROL JP1:6
7	G1VL	CONTROL JP1:7
8	ENAB	CONTROL JP1:8
9	RTTY	CONTROL JP1:9
10	*STST	CONTROL JP1:10
11	GND	-
12	+15V	CONTROL JP1:12
MAINS JP2	Signal name	To:
1	+15V	INPUT JP1:5
2	GND	INPUT JP1:3
3	BIAS	INPUT JP1:8
4	n/c	-
5	+265V	INPUT JP1:10
INPUT JP1	Signal name	To:
1	aavi	WATTMETER JP1:7
2	*INR	(CONTROL JP2:8)
3	GND	(MAINS JP2:2)

Cable Harness Connections (continued):		
4	+15V	WATTMETER JP1:8
5	+15V	(MAINS JP2:1
6	GND	(CONTROL JP2:7)
7	GND	WATTMETER JP1:9
8	BIAS	(MAINS JP2:3)
9	n/c	-
10	+265V	(MAINS JP2:5)
WATTM. JP1	Signal name	To:
1	fwdi	(CONTROL JP2:1)
2	rflr	(CONTROL JP2:2)
3	*ORCW	(CONTROL JP2:3)
4	GND	(CONTROL JP2:4)
5	*OUTR	(CONTROL JP2:5)
6	aavd	(CONTROL JP2:6)
7	aavi	(INPUT JP1:1)
8	+15V	(INPUT JP1:4)
9	GND	(INPUT JP1:7)
10	*ANT2	(CONTROL JP2:10)

End