

ALPHA 89

Schematic Set

Caution! Read all schematic notes carefully

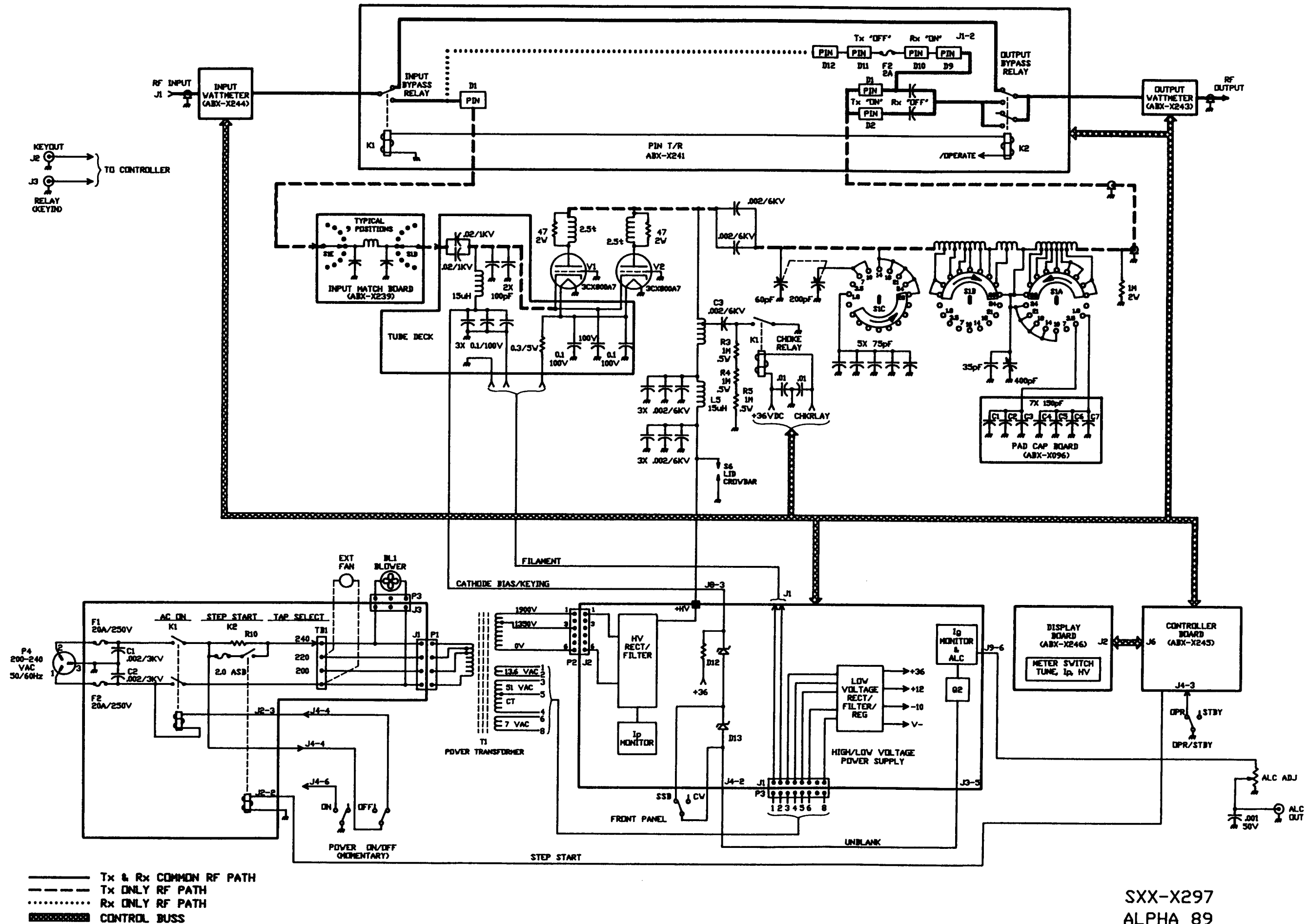
These diagrams are intended to be used in conjunction with the ZMX-X128 Operating Manual. All safety warnings described in the Operating Manual must be adhered to while using these diagrams.

ALPHA/POWER PART NO. ZMX-X138

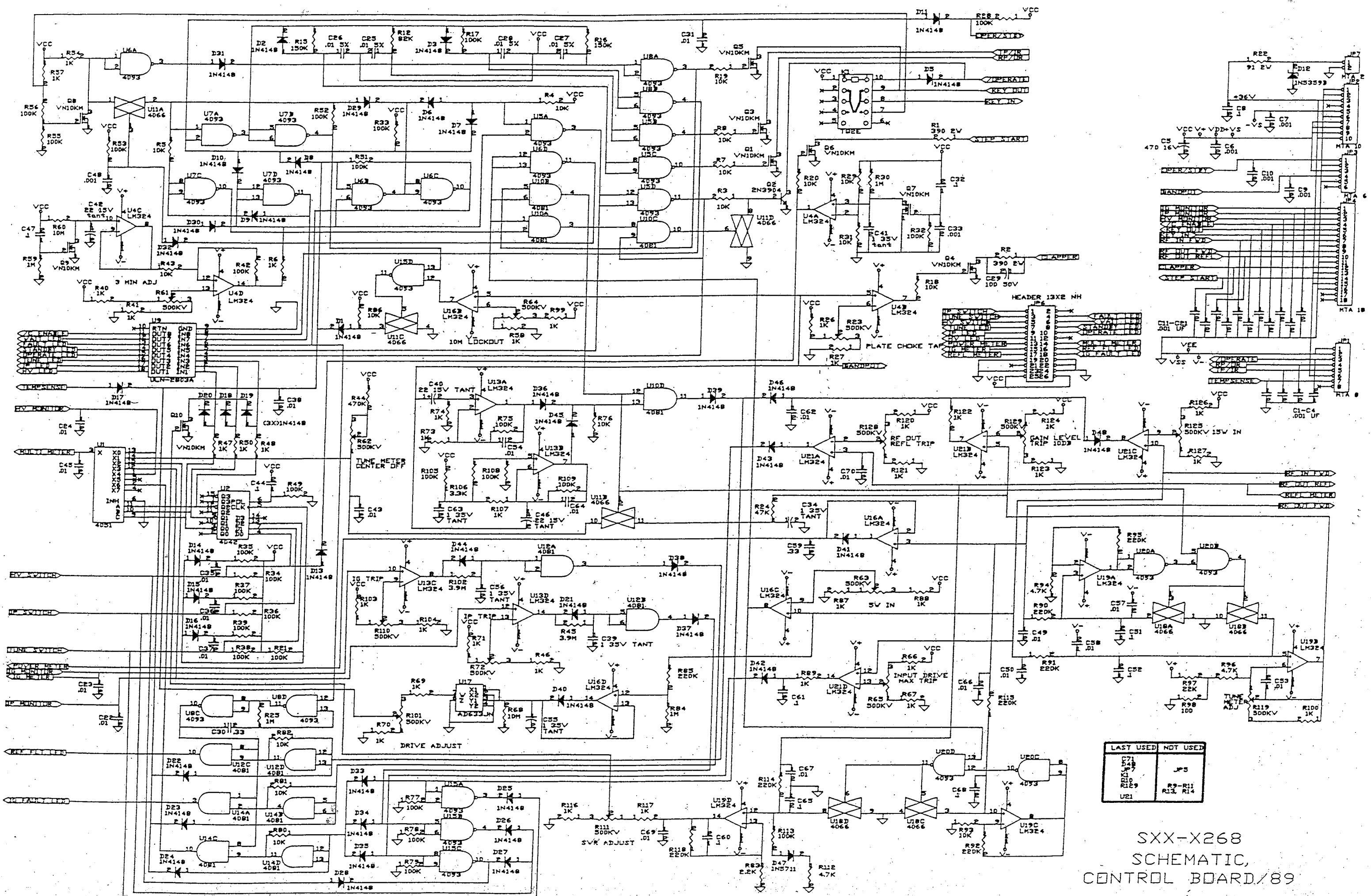
Revision A

May 24th 1994

NOTES: UNLESS OTHERWISE SPECIFIED:
 1. ALL CAPACITOR VALUES ARE μF AND ALL RESISTOR VALUES ARE 1/4 WATT.
 2. ALL 'ABX' DESIGNATORS INDICATE PRINTED CIRCUIT BOARDS.

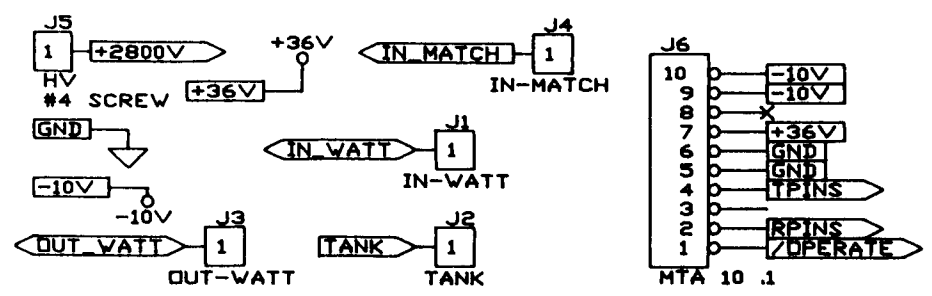
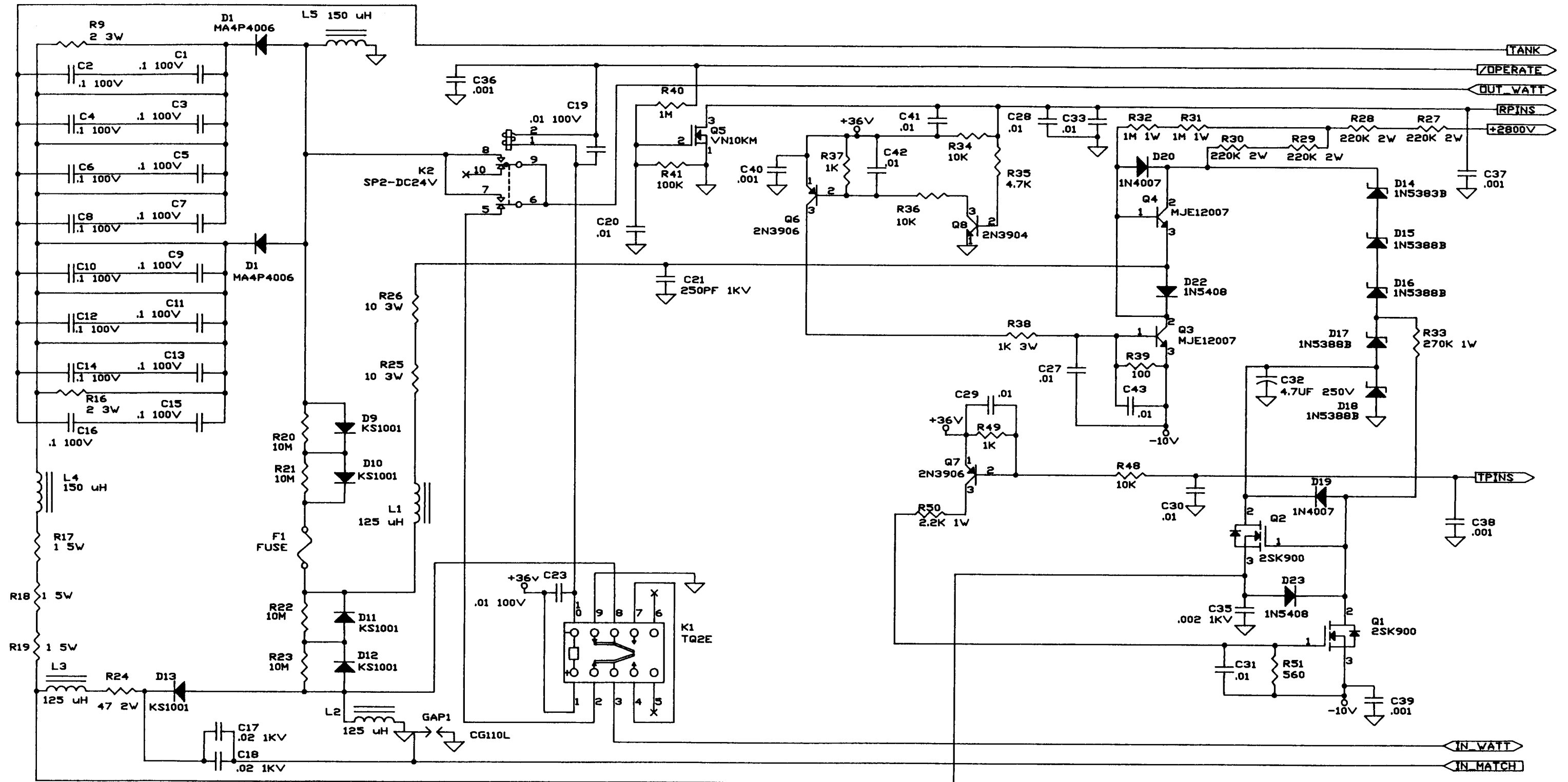


SXX-X297
 ALPHA 89
 SIMPLIFIED SCHEMATIC



| LAST USED | | NOT USED | |
|-----------|----------|----------|-----|
| C71 | D48 | | JP5 |
| D49 | D47 | | |
| R81 | R80 | | |
| R10 | R109 | | |
| U21 | R9-R11 | | |
| | R13, R14 | | |

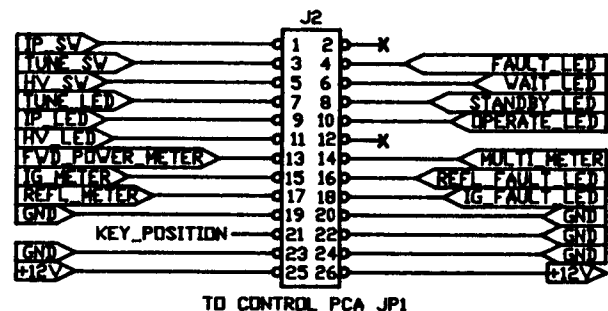
SXX-X268
SCHEMATIC,
CONTROL BOARD/89



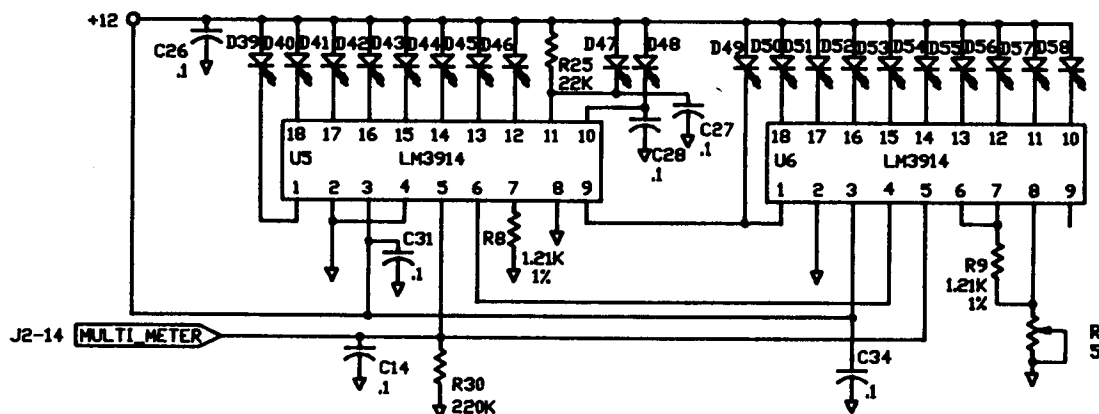
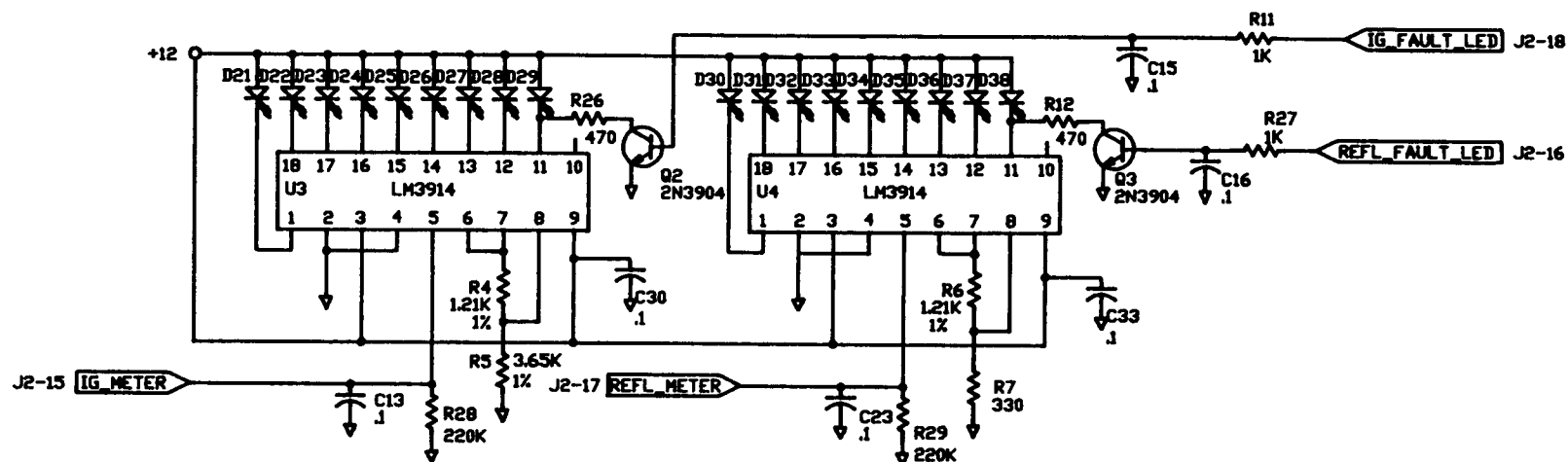
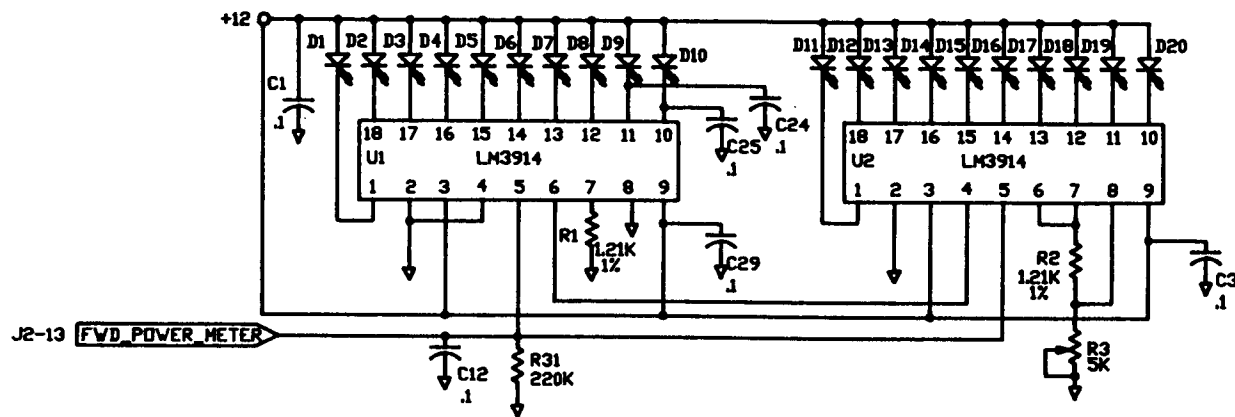
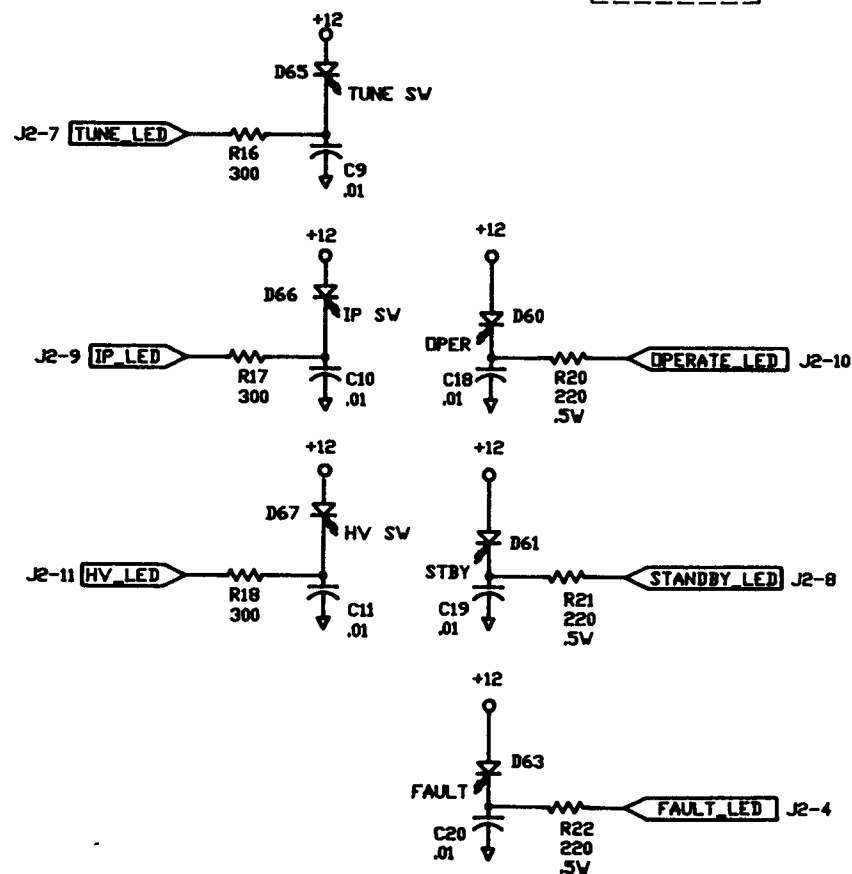
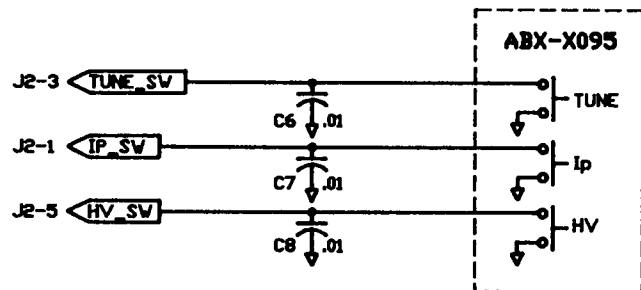
| LAST USED | NOT USED |
|-----------|------------|
| C43 | C22,24-26 |
| D23 | D21 |
| F1 | |
| GAP1 | |
| J6 | |
| K2 | |
| L5 | |
| Q8 | |
| R55 | R1-8,10-15 |
| RT1 | R42-47 |
| U1 | U/A |

SXX-X264
SCHEMATIC, PIN
DIODE T/R BRD

NOTES: UNLESS OTHERWISE SPECIFIED,
 1. CAPACITOR VALUES ARE uF.
 2. RESISTORS ARE 1/4W.

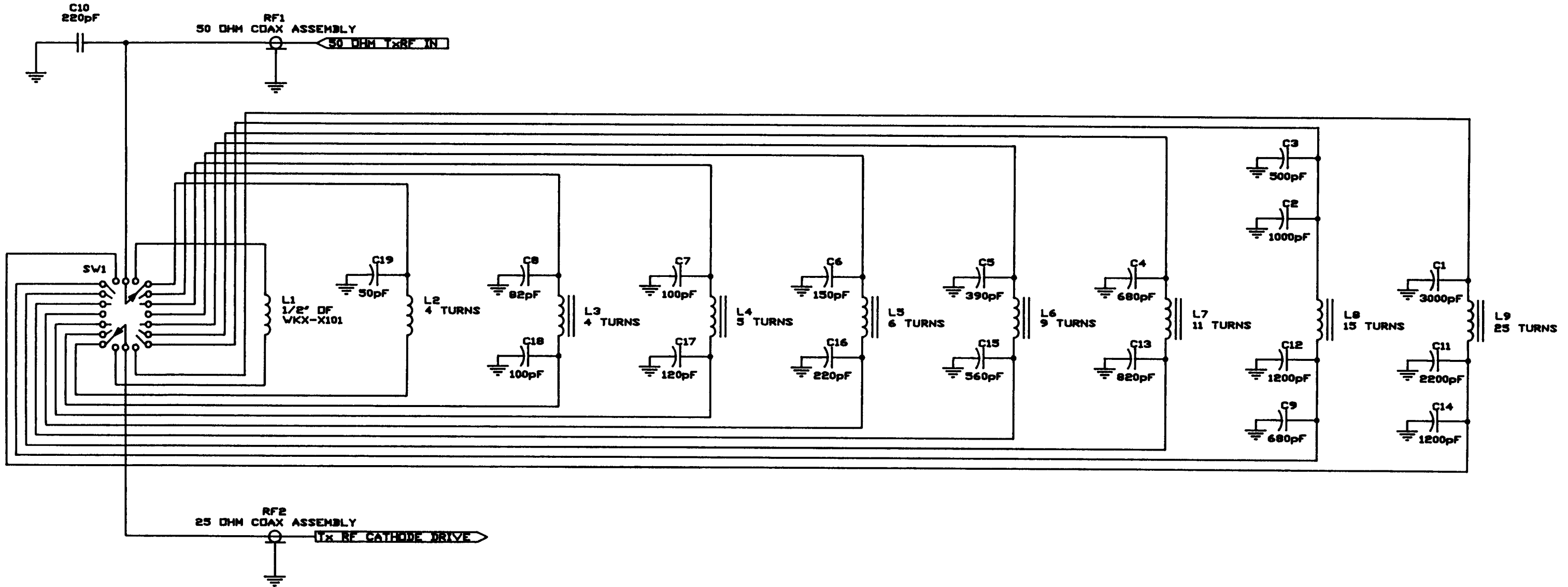


TO CONTROL PCA JP1



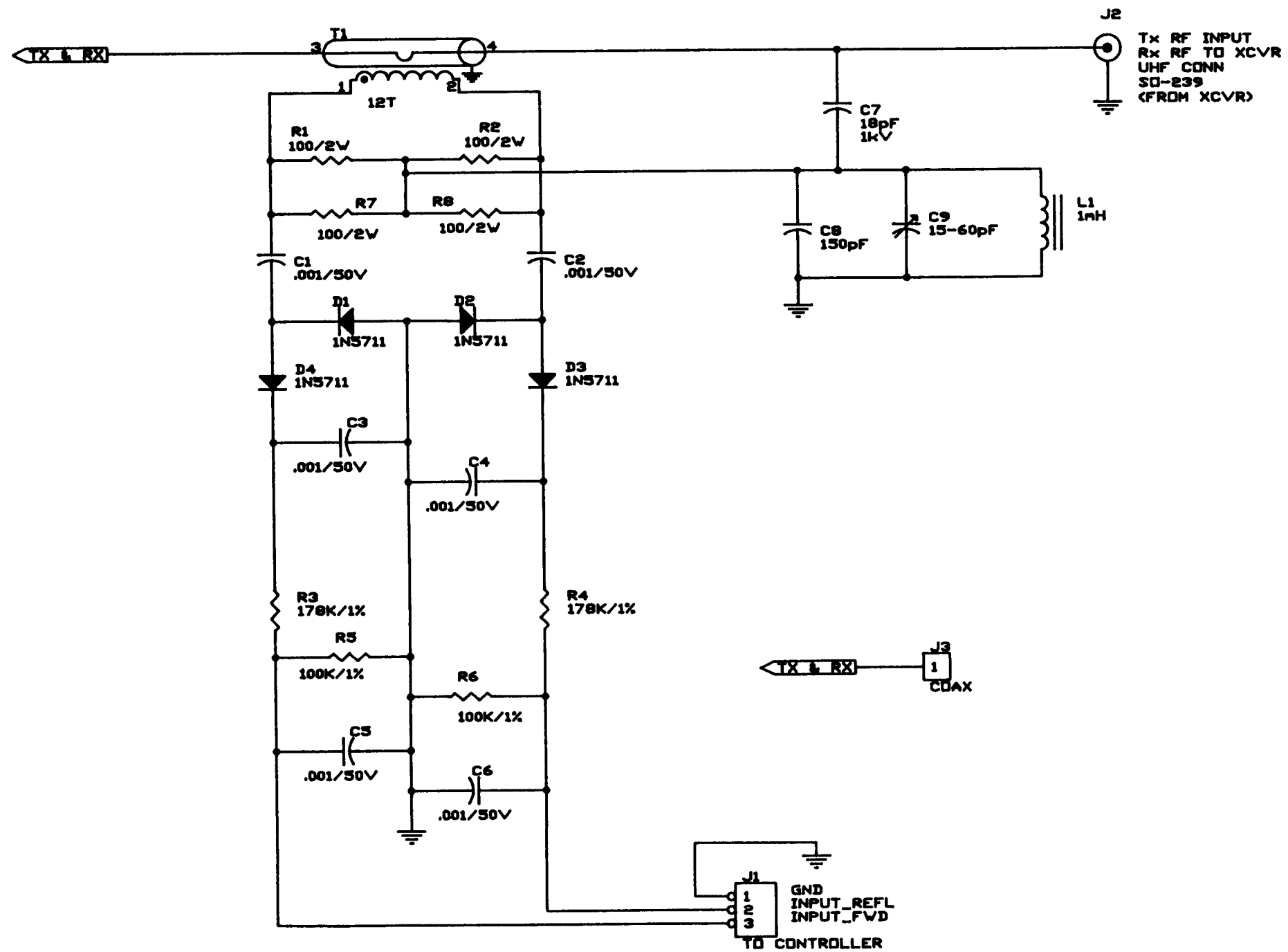
| LAST USED | NOT USED |
|-----------|-------------------|
| C34 | C2-C5, C17, C22 |
| D67 | D59, D64 |
| Q3 | Q1 |
| R31 | R13-R15, R19, R24 |
| U6 | |

NOTES: UNLESS OTHERWISE SPECIFIED,
 1. ALL CAPACITOR VALUES ARE IN (pF).
 ALL RESISTOR VALUES ARE 1/4 WATT.



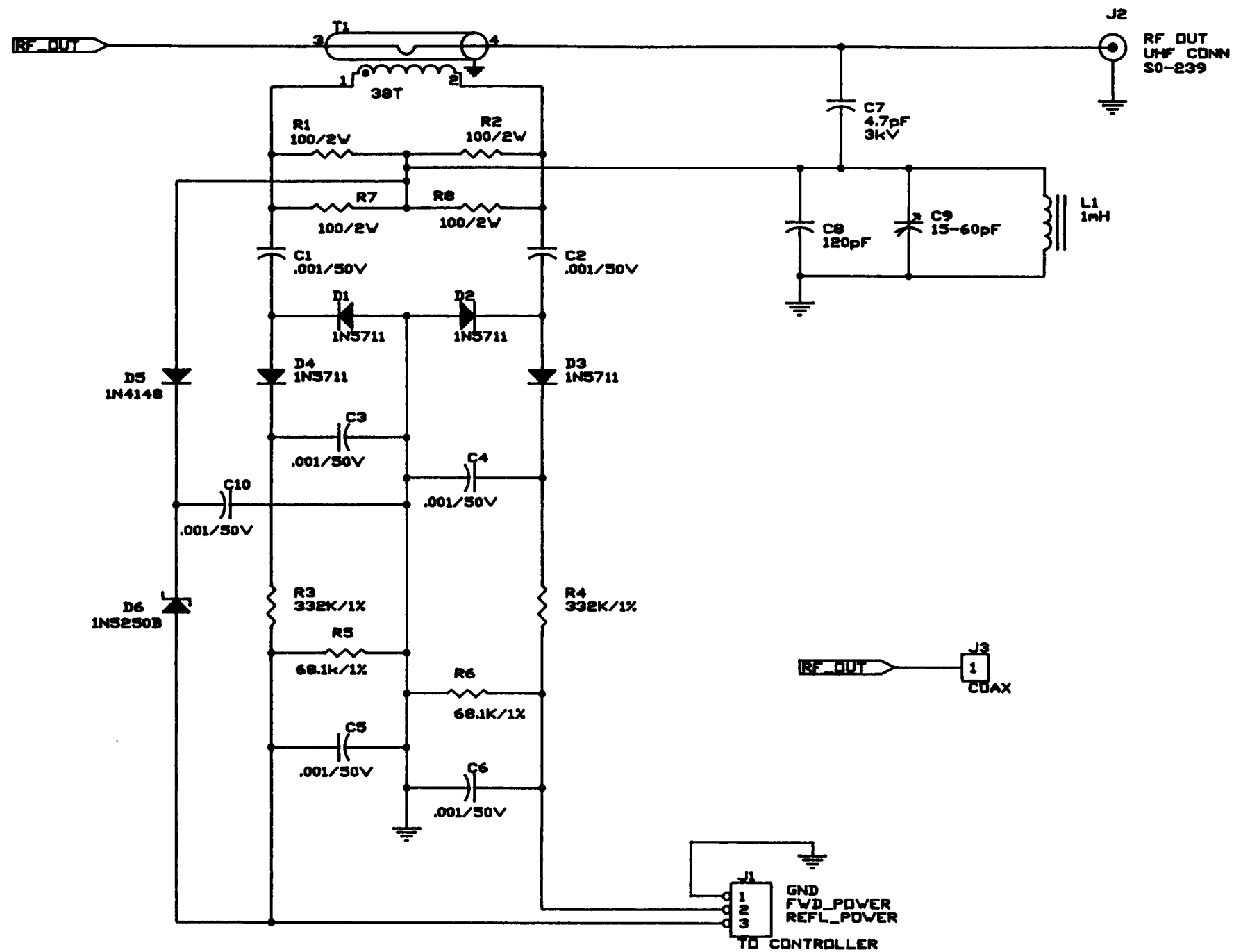
| |
|-----------|
| LAST USED |
| C19 |
| L9 |
| RF2 |
| SW1 |

SXX-X262
 SCHEM, INPUT
 MATCHING NETWORK



| LAST USED | NOT USED |
|-----------|----------|
| C9 | |
| D4 | |
| J3 | |
| L1 | |
| R8 | |
| T1 | |

SXX-X267
SCHEMATIC,
INPUT WATTMETER/89



| LAST USED | NOT USED |
|-----------|----------|
| C10 | |
| D6 | |
| J3 | |
| L1 | |
| R8 | |
| T1 | |

SXX-X266
 SCHEMATIC,
 OUTPUT WATTMETER/89