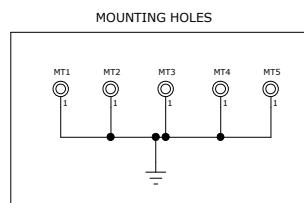
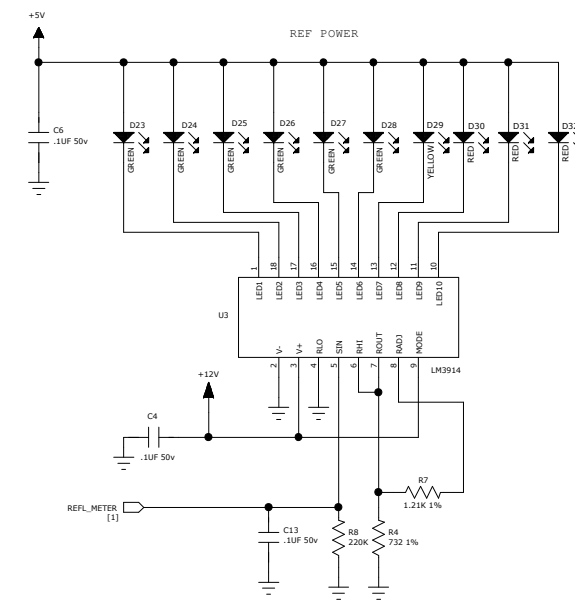
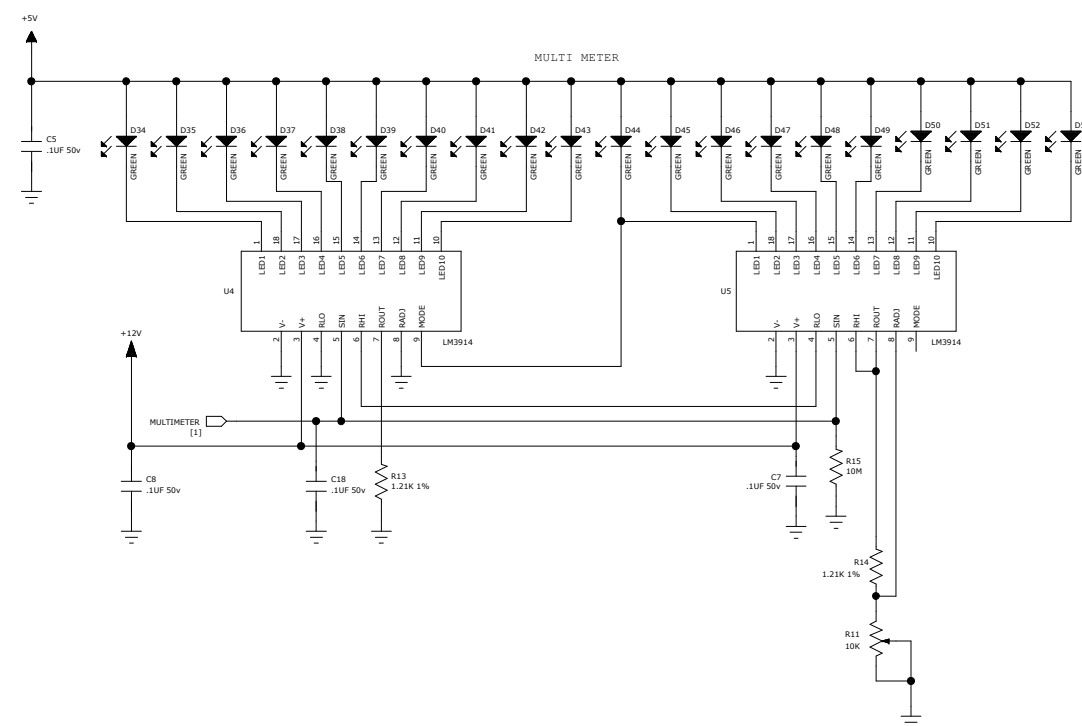
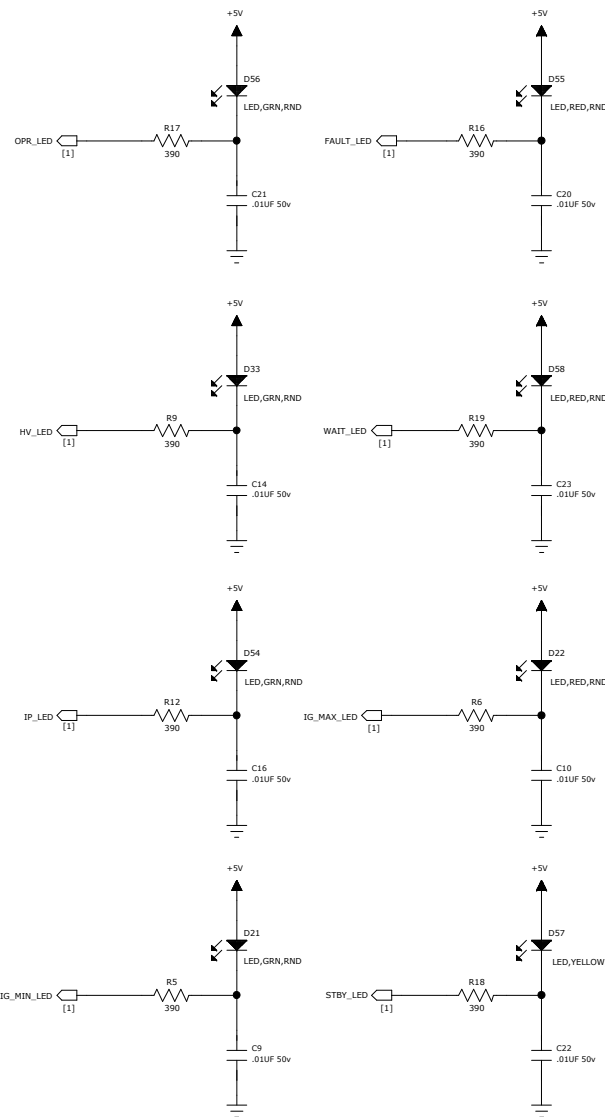
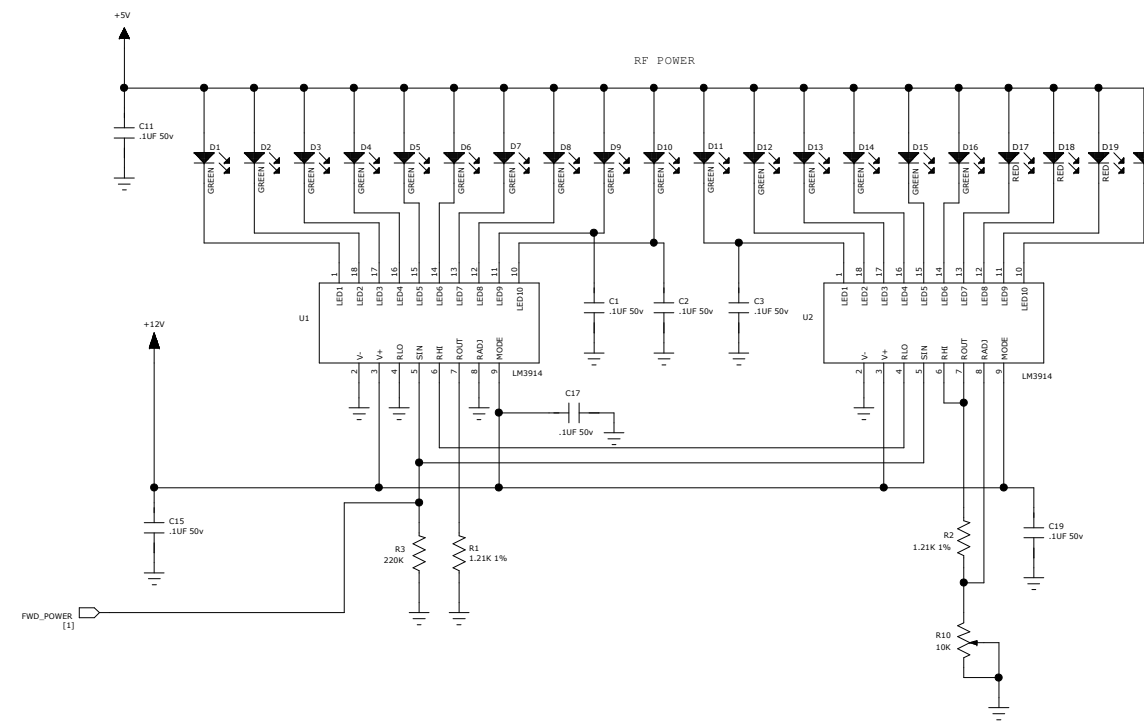
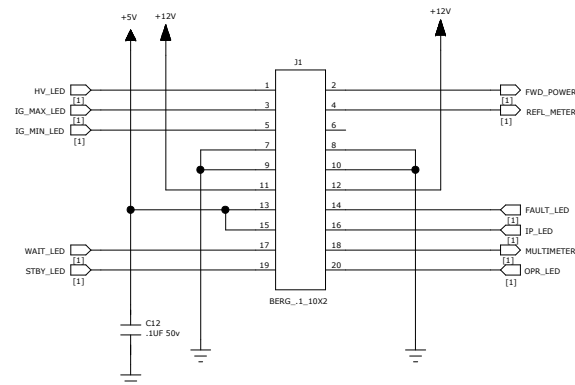


REVISION HISTORY					
REV	ECO NO.	DESCRIPTION	CHANGED BY & DATE	CHECKED BY & DATE	EFFECTIVITY DATE
2		RE-LAYOUT	BWF 09/25/06	GEH 09/25/06	09/25/06



UNLESS OTHERWISE SPECIFIED DIMENSIONS ARE IN INCHES TOLERANCES ARE: XX +/- 0.05 XXX +/- 0.000	PROJECT NO: 8100	DATE: 09/25/06	6185 ANAPHOSE RD. BOULDER, COLORADO 80303 PHONE: (303) 473-9232 FAX: (303) 473-9660
	DESIGNED BY: G. HARDMAN	DRAWN BY: B. FOCKEN	
PROPRIETARY NOTICE: THIS DOCUMENT AND DATA DISCLOSED HEREIN ARE HEREBY GRANTED TO BE REPRODUCED, USED, OR DISCLOSED IN WHOLE OR ANY PART TO ANYONE WITHOUT THE PERMISSION OF ALPHA RADIO PRODUCTS LLC.	DRAWING FILE: BCX-X400_REV_2.PCB	SCALE: BCX-X400	REV. 2
FACED POWERLOGIC DRAWING		SCALE	SHEET 1 OF 1

6

5

4

3

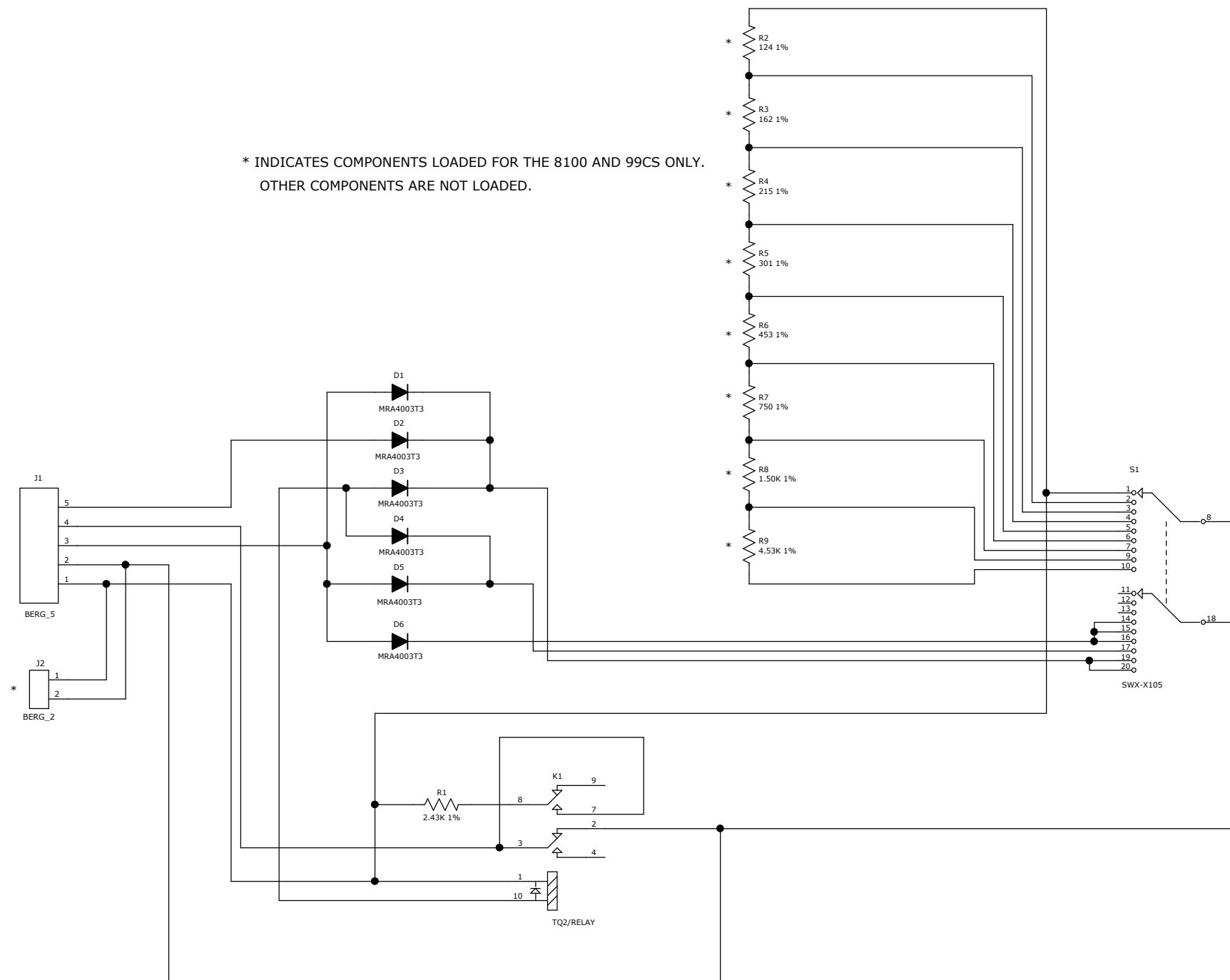
2

1

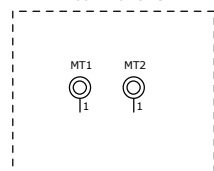
REVISION HISTORY

REV	ECO NO.	DESCRIPTION	CHANGED BY & DATE	CHECKED BY & DATE	EFFECTIVITY DATE
B		INITIAL RELEASE	BWF 04/17/06	GEH 04/17/06	04/17/06
C		ADD RESISTOR			

* INDICATES COMPONENTS LOADED FOR THE 8100 AND 99CS ONLY.
OTHER COMPONENTS ARE NOT LOADED.



MOUNTING HOLES



UNLESS OTHERWISE SPECIFIED DIMENSIONS ARE IN INCHES TOLERANCES ARE: XX +/- 0.01 ANGLE: 0.5 .XXX +/- 0.001	PROJECT NO. 99	ALPHA RADIO PRODUCTS LLC 6185 ARAPAHOE RD. BOULDER, COLORADO 80303 PHONE: (303) 473-9232 FAX: (303) 473-9660	
	ENGINEER: G. HARDMAN DATE: 04/17/06 DRAWN BY: B. FOCKEN DRAFT DATE: 04/17/06		
PROPRIETARY NOTICE: THIS DOCUMENT AND DATA DISCLOSED HEREIN AND HEREWITH IS NOT TO BE REPRODUCED, USED, OR DISCLOSED IN WHOLE OR ANY PART TO ANYONE WITHOUT THE PERMISSION OF ALPHA RADIO PRODUCTS LLC.	DRAWING FILE: BCX-X409_REV_B.SCH	TITLE: SCH,99,SWITCH MATRIX BOARD	
PAIDS POWERLOGIC DRAWING	SIZE C	DRAWING # BCX-X409	REV. C
SCALE		SHEET 1 OF 1	

6

5

4

3

2

1

D

D

C

C

B

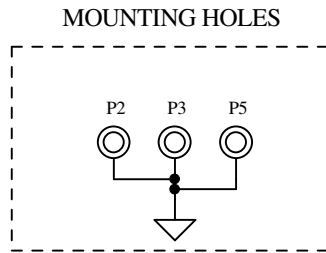
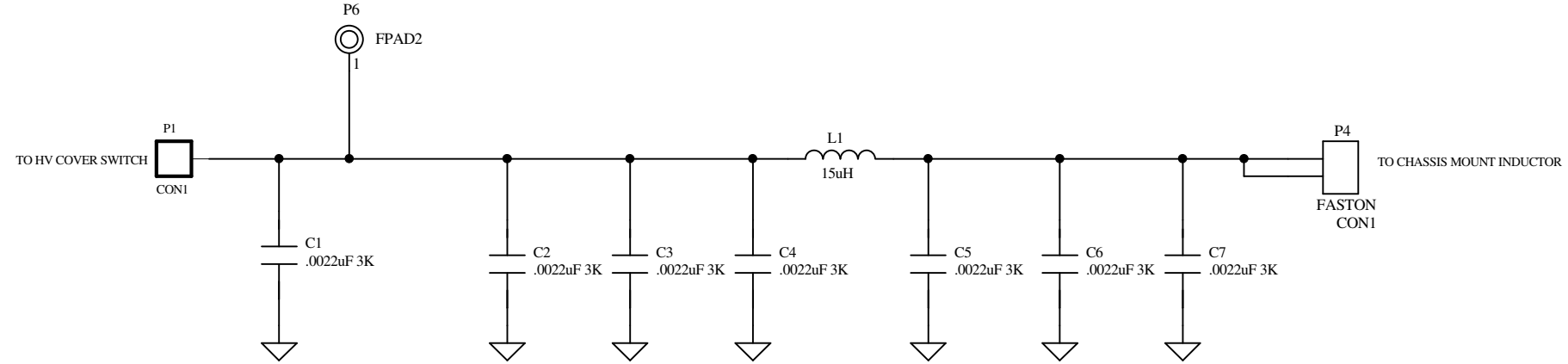
B

A

A

REVISION HISTORY

REV	ECO NO.	DESCRIPTION	CHANGED BY & DATE	CHECKED BY & DATE	EFFECTIVITY DATE
1		INITIAL RELEASE	BWF 08/18/05	GEH 08/18/05	08/18/05
1.1		CHANGE HV CONNECTOR HOLE IN PCB.	BWF 04/13/06	GEH 04/13/06	04/13/06



COMPONENT TYPE = ELECTRICAL
 CATEGORY = CUSTOM
 DESIGNATION = NONE

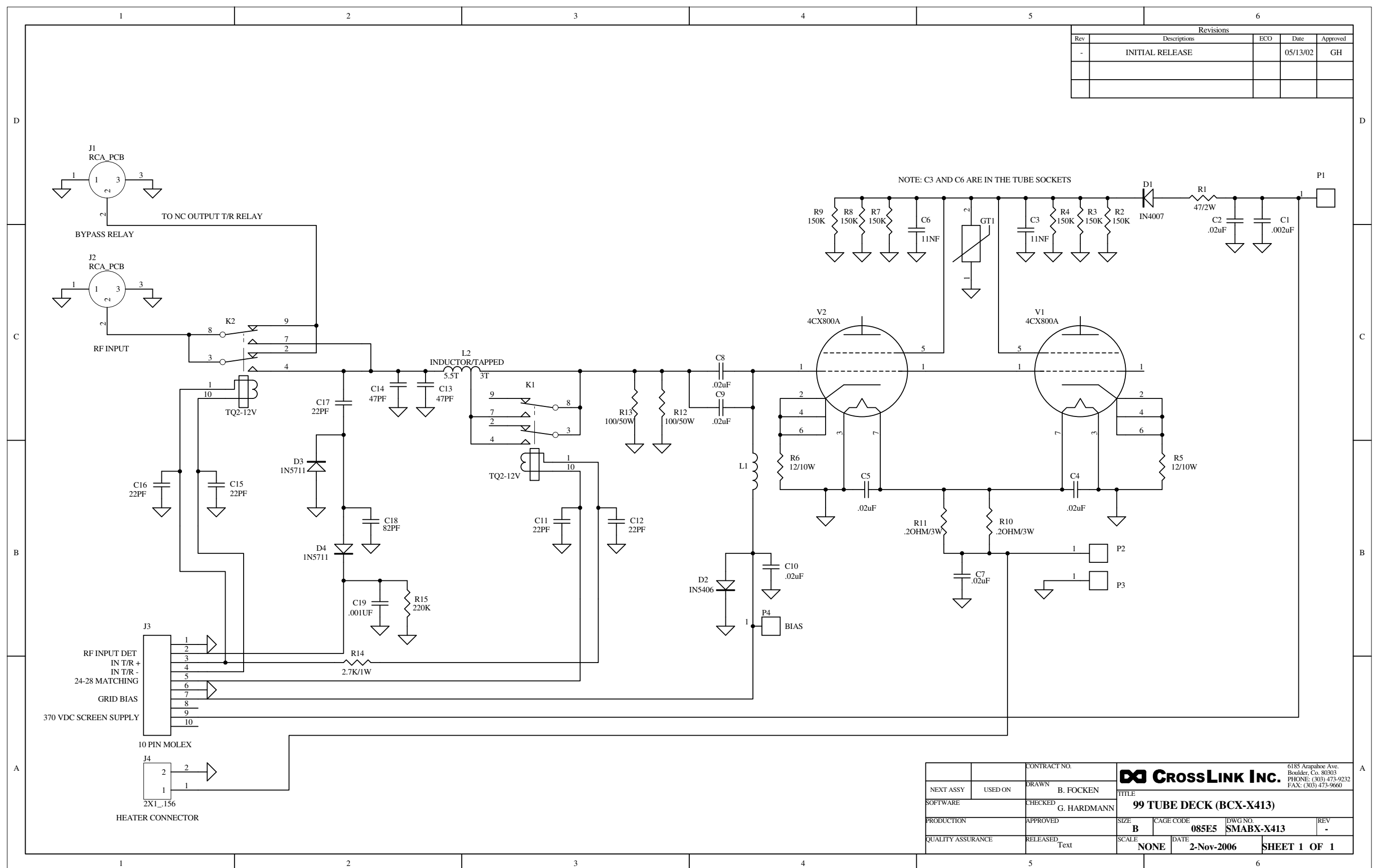
UNLESS OTHERWISE SPECIFIED
 DIMENSIONS ARE IN INCHES
 TOLERANCES ARE:
 .XX +/- 0.01 ANGLE: 0.5
 .XXX +/- 0.001

PROPRIETARY NOTICE:
 THIS DOCUMENT AND DATA DISCLOSED
 HEREIN AND HEREWITH IS NOT
 TO BE REPRODUCED, USED,
 OR DISCLOSED IN WHOLE OR
 ANY PART TO ANYONE WITHOUT
 THE PERMISSION OF ALPHA RADIO PRODUCTS LLC.

PROJECT NO. 8100/99	ENGINEER: G. HARDMAN	DATE: 04/13/06
DRAWN BY: B. FOCKEN	DRAFT DATE: 04/13/06	
DRAWING FILE: BCX-X412_REV_1_1.SCH		
PADS POWERLOGIC DRAWING		

ALPHA RADIO PRODUCTS LLC 6185 ARAPAHOE RD. BOULDER, COLORADO 80303 PHONE: (303) 473-9232 FAX: (303) 473-9660		TITLE: SCH,ALPHA 8100/99 CENTER PARTITION FILTER
SCALE		SHEET 1 OF 1

Revisions				
Rev	Descriptions	ECO	Date	Approved
-	INITIAL RELEASE		05/13/02	GH



CONTRACT NO.	6185 Arapahoe Ave. Boulder, Co. 80303 PHONE: (303) 473-9232 FAX: (303) 473-9660
DRAWN B. FOCKEN	CrossLINK Inc.
CHECKED G. HARDMANN	TITLE 99 TUBE DECK (BCX-X413)
APPROVED	SIZE B
RELEASED Text	CAGE CODE 085E5
	DWG NO. SMABX-X413
	DATE 2-Nov-2006
	SCALE NONE
	SHEET 1 OF 1

6

5

4

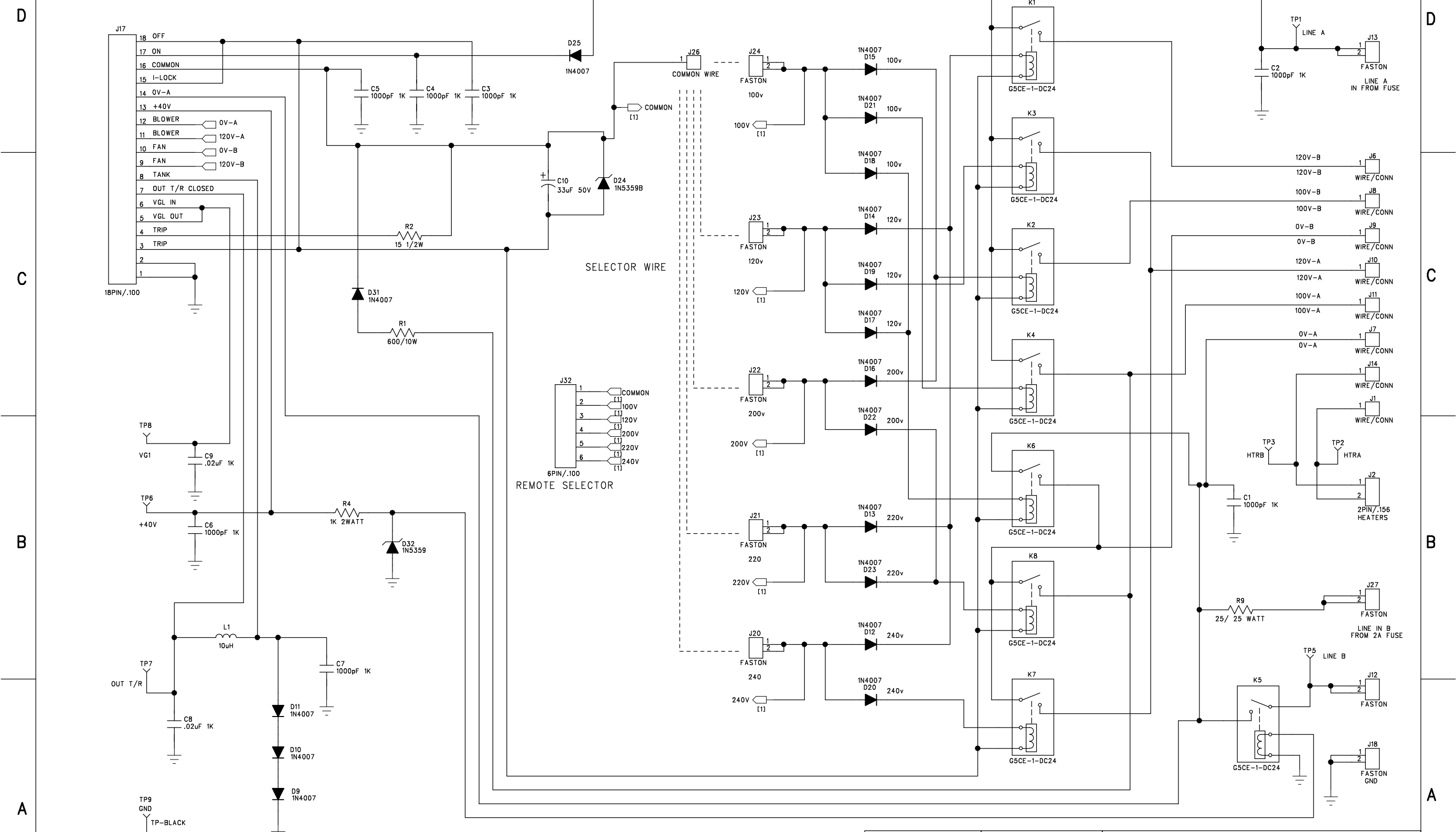
3

2

1

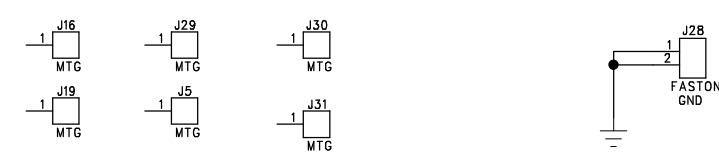
REVISION HISTORY

REV	ECO NO.	DESCRIPTION	CHANGED BY & DATE	CHECKED BY & DATE	EFFECTIVITY DATE
1		INITIAL RELEASE	BWF 01/04/05	GEH 01/04/05	01/04/05
1.1		VALUE CHANGES AND ADD D32.	BWF 04/13/06	GEH 04/13/06	04/13/06

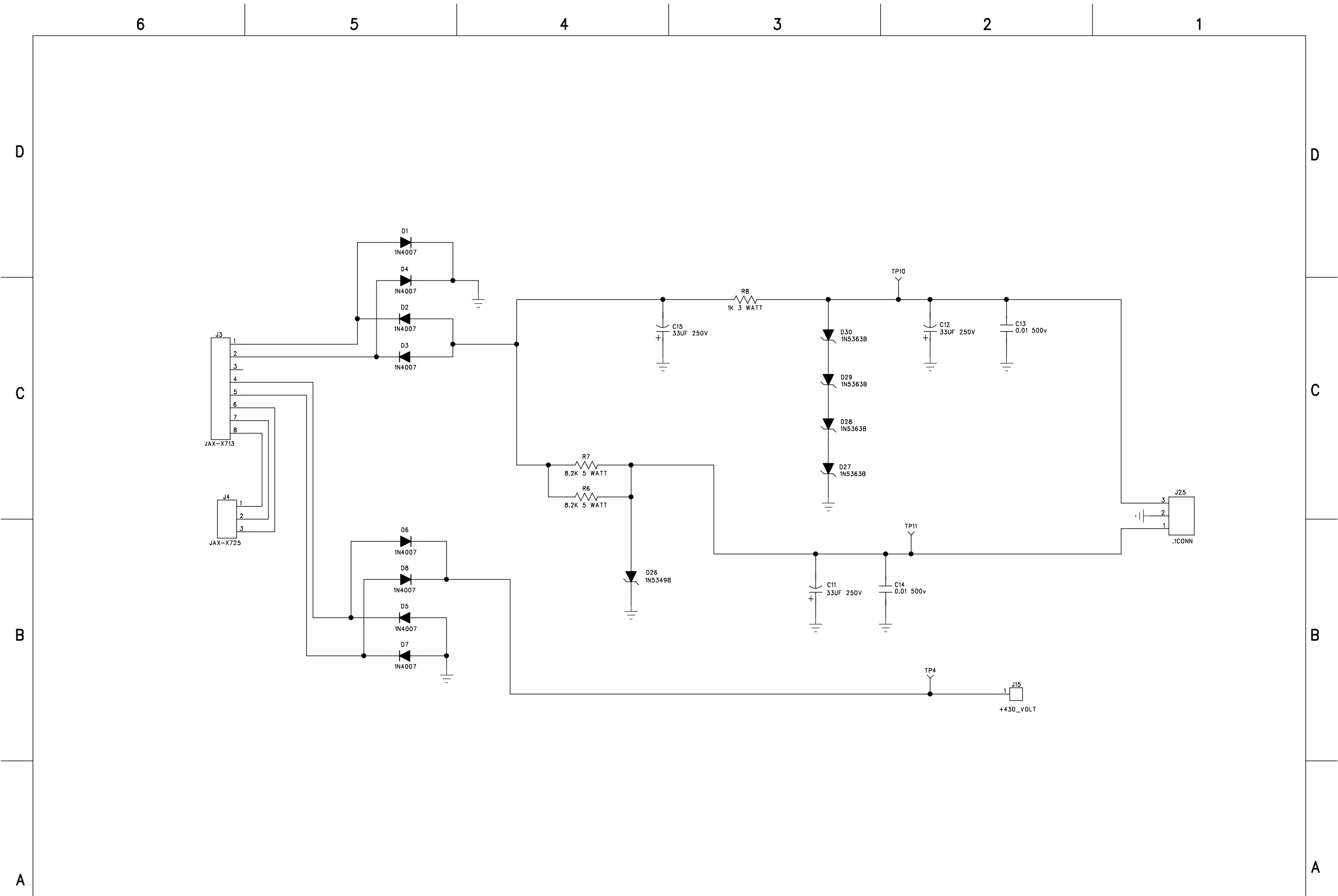


D
C
B
A

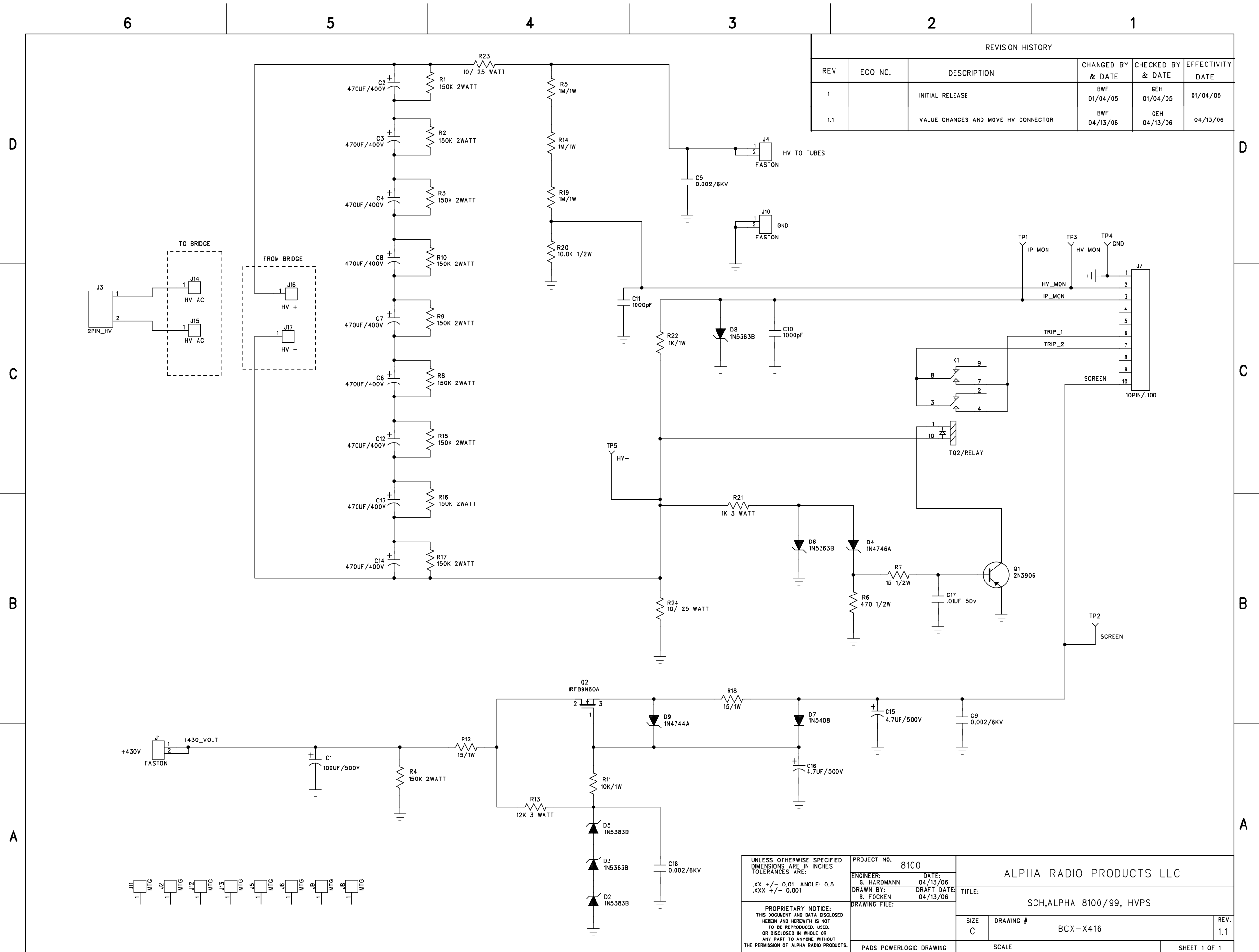
D
C
B
A



UNLESS OTHERWISE SPECIFIED DIMENSIONS ARE IN INCHES TOLERANCES ARE: .XX +/- 0.01 ANGLE: 0.5 .XXX +/- 0.001	PROJECT NO. ALPHA RADIO PRODUCTS	ALPHA RADIO PRODUCTS LLC 6185 ARAPAHOE RD. BOULDER, COLORADO 80303 PHONE: 303-473-9232 FAX: 303-473-9660	
	DRAWN BY: B. FOCKEN	DRAFT DATE: 04/13/06	TITLE: SCH,ALPHA 8100/99,MAINS
PROPRIETARY NOTICE: THIS DOCUMENT AND DATA DISCLOSED HEREIN AND HEREWITH IS NOT TO BE REPRODUCED, USED, OR DISCLOSED IN WHOLE OR ANY PART TO ANYONE WITHOUT THE PERMISSION OF ALPHA RADIO PRODUCTS.	DRAWING FILE: BCX-X415_REV_1_1.SCH	SIZE C	DRAWING # BCX-415
PADS POWERLOGIC DRAWING	SCALE	REV. 1.1	SHEET 1 OF 2



UNLESS OTHERWISE SPECIFIED DIMENSIONS ARE IN INCHES TOLERANCES ARE: .XX +/- 0.01 ANGLE: 0.5 .XXX +/- 0.001	PROJECT NO. 8100	6185 ARAPAHOE RD. BOULDER, COLORADO 80303 PHONE: 303-473-9232 FAX: 303-473-9660	
	PROPRIETARY NOTICE: THIS DOCUMENT AND DATA DISCLOSED HEREIN AND HEREWITH IS NOT TO BE REPRODUCED, USED, OR DISCLOSED IN WHOLE OR ANY PART TO ANYONE WITHOUT THE PERMISSION OF ALPHA RADIO PRODUCTS.	DRAWN BY: B. FOCKEN DRAFT DATE: 04/13/06 DRAWING FILE: BCX-X415_REV_1_1.SCH	TITLE: SCH,ALPHA 8100/99,MAINS
	SIZE C	DRAWING # BCX-415	REV. 1.1
PADS POWERLOGIC DRAWING		SCALE	SHEET 2 OF 2

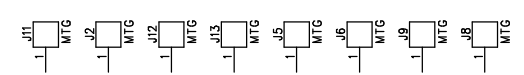
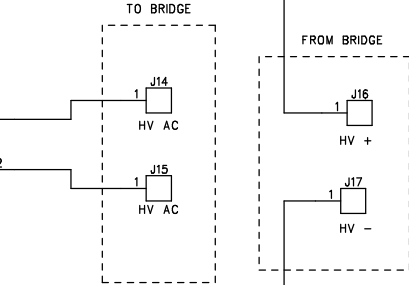


REVISION HISTORY					
REV	ECO NO.	DESCRIPTION	CHANGED BY & DATE	CHECKED BY & DATE	EFFECTIVITY DATE
1		INITIAL RELEASE	BWF 01/04/05	GEH 01/04/05	01/04/05
1.1		VALUE CHANGES AND MOVE HV CONNECTOR	BWF 04/13/06	GEH 04/13/06	04/13/06

UNLESS OTHERWISE SPECIFIED DIMENSIONS ARE IN INCHES TOLERANCES ARE: .XX +/- 0.01 ANGLE: 0.5 .XXX +/- 0.001	PROJECT NO. 8100	ALPHA RADIO PRODUCTS LLC	
	ENGINEER: G. HARDMANN DATE: 04/13/06 DRAWN BY: B. FOCKEN DRAFT DATE: 04/13/06 DRAWING FILE:	TITLE: SCH,ALPHA 8100/99, HVPS	
PROPRIETARY NOTICE: THIS DOCUMENT AND DATA DISCLOSED HEREIN AND HEREWITH IS NOT TO BE REPRODUCED, USED, OR DISCLOSED IN WHOLE OR ANY PART TO ANYONE WITHOUT THE PERMISSION OF ALPHA RADIO PRODUCTS.	SIZE C	DRAWING # BCX-X416	REV. 1.1
PADS POWERLOGIC DRAWING		SCALE	SHEET 1 OF 1

D
C
B
A

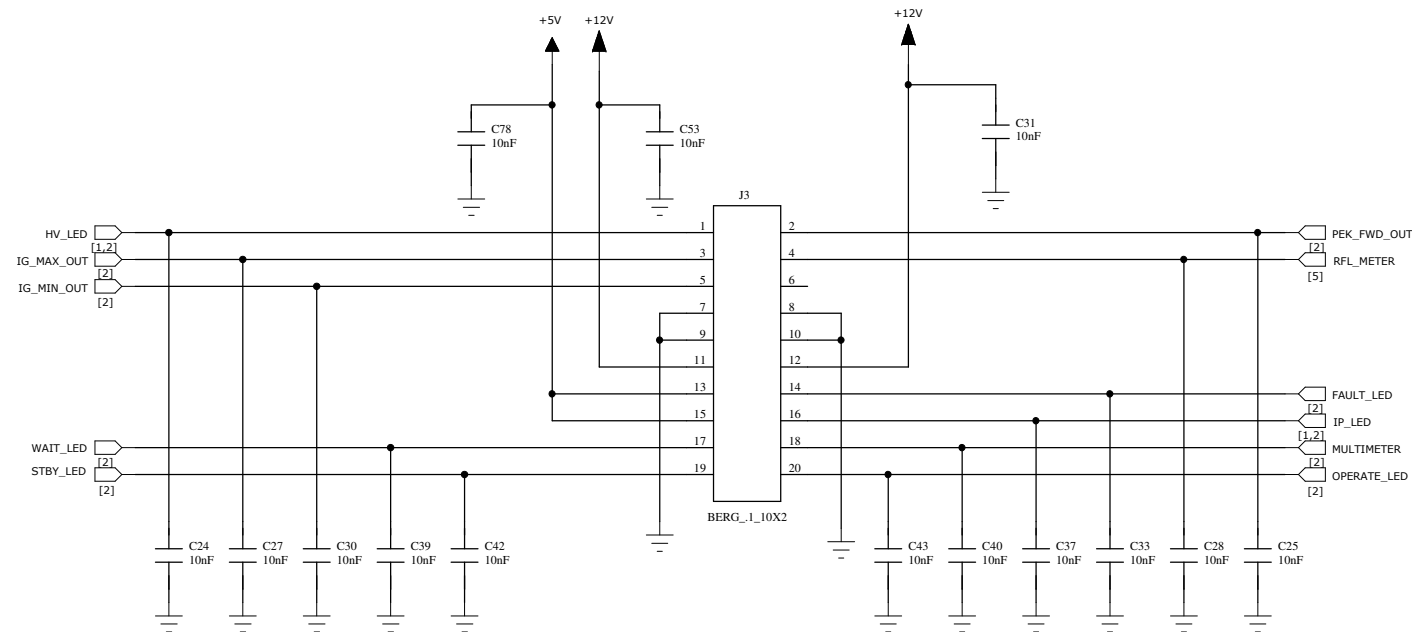
D
C
B
A



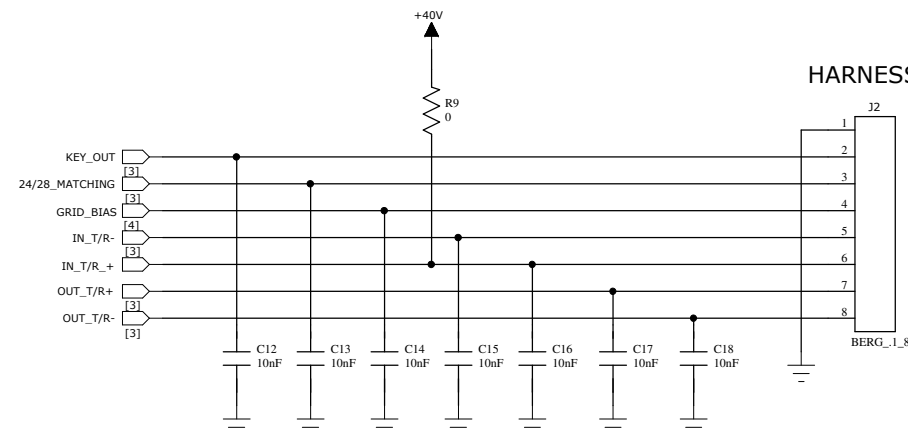
REVISION HISTORY

REV	ECO NO.	DESCRIPTION	CHANGED BY & DATE	CHECKED BY & DATE	EFFECTIVITY DATE
1		INITIAL RELEASE	BWF 01/12/06	GEH 01/12/06	01/12/06
1.1		VALUE CHANGES AND INCORPORATE WIRES	BWF 04/04/06	GEH 04/04/06	04/04/06

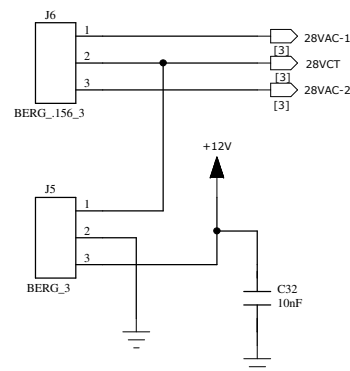
TO DISPLAY PANEL



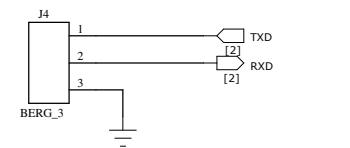
HARNES 1



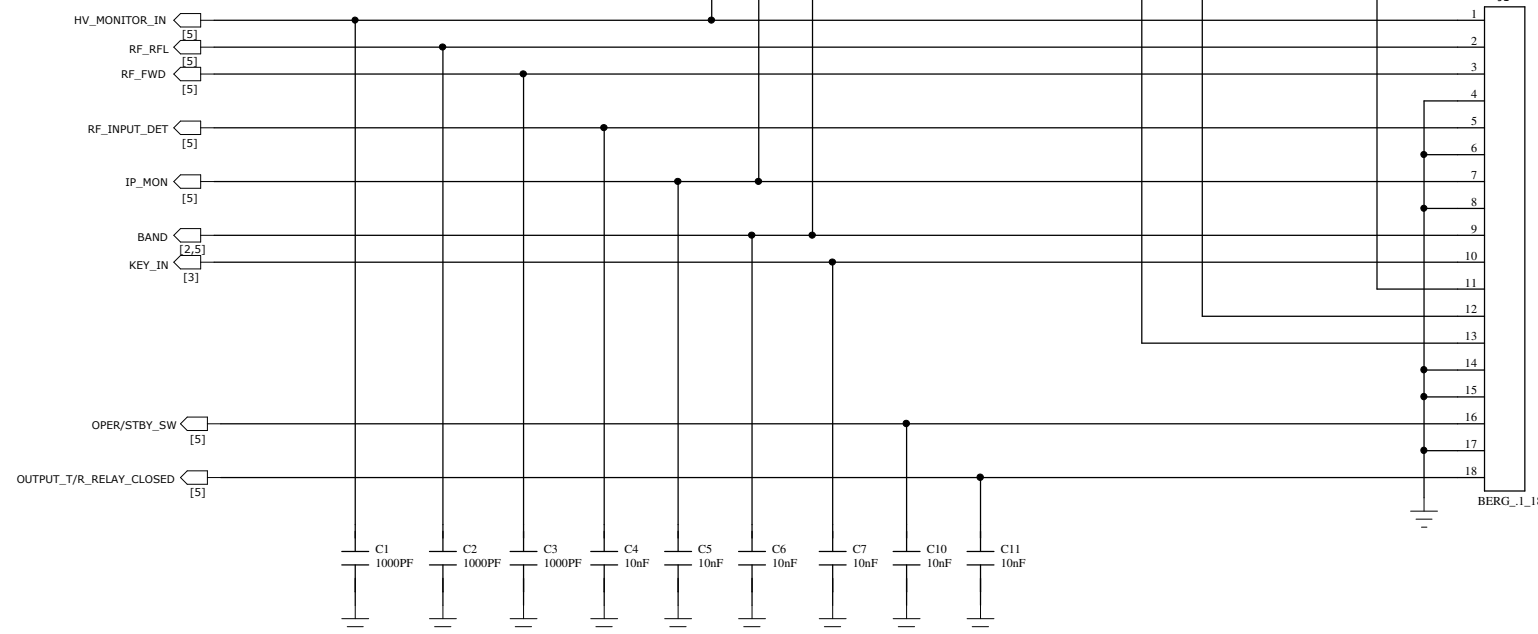
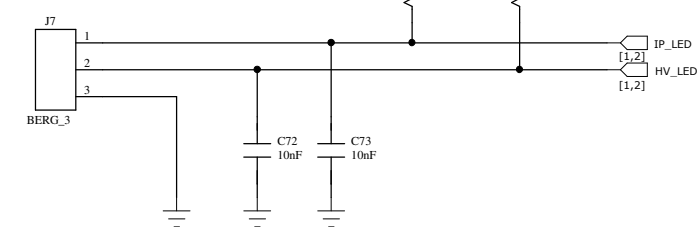
FROM TRANSFORMER SECONDARY



TO RS232 CONNECTOR



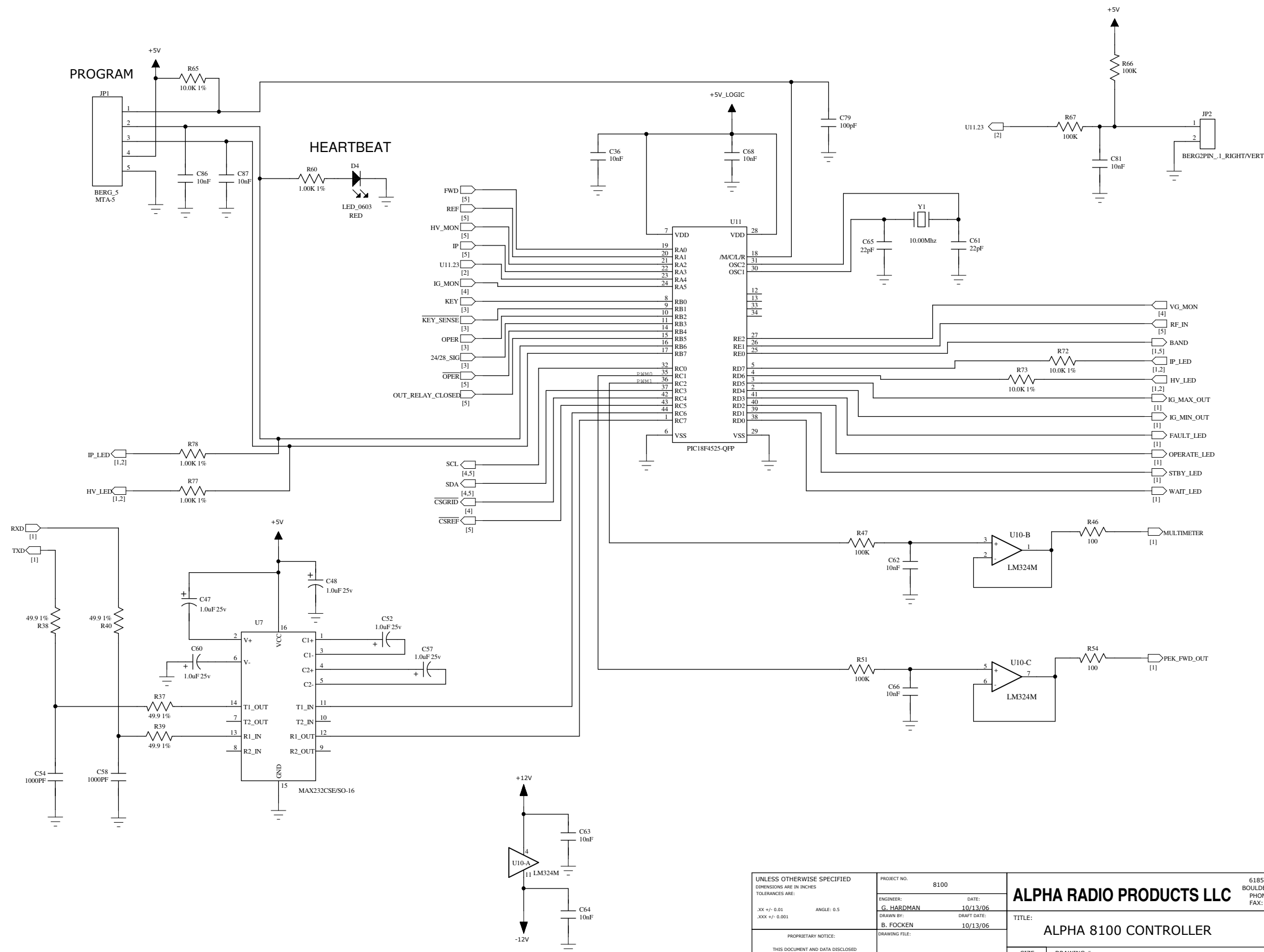
TO MULTIMETER SWITCH



HARNES 2

UNLESS OTHERWISE SPECIFIED DIMENSIONS ARE IN INCHES TOLERANCES ARE: .XX +/- 0.01 ANGLE: 0.5 .XXX +/- 0.001	PROJECT NO. 8100 ENGINEER: G. HARDMAN DATE: 10/13/06 DRAWN BY: B. FOCKEN DRAFT DATE: 10/13/06 DRAWING FILE:	ALPHA RADIO PRODUCTS LLC 6185 ARAPAHOE RD. BOULDER, COLORADO 80303 PHONE: (303) 473-9232 FAX: (303) 473-9660	
	PROPRIETARY NOTICE: THIS DOCUMENT AND DATA DISCLOSED HEREIN AND HEREWITH IS NOT TO BE REPRODUCED, USED, OR DISCLOSED IN WHOLE OR ANY PART TO ANYONE WITHOUT THE PERMISSION OF ALPHA RADIO PRODUCTS LLC.		TITLE: ALPHA 8100 CONTROLLER SIZE: C DRAWING #: ABX-X423 REV. 1.2 SCALE: SHEET 1 OF 5

COMPONENT TYPE = ELECTRICAL
CATEGORY = CUSTOM
DESIGNATION = NONE



UNLESS OTHERWISE SPECIFIED DIMENSIONS ARE IN INCHES TOLERANCES ARE: XX +/- 0.01 ANGLE: 0.5 .XXX +/- 0.001	PROJECT NO. 8100	ALPHA RADIO PRODUCTS LLC 6185 ARAPAHOE RD. BOULDER, COLORADO 80303 PHONE: (303) 473-9232 FAX: (303) 473-9660
	ENGINEER: G. HARDMAN DATE: 10/13/06	
PROPRIETARY NOTICE: THIS DOCUMENT AND DATA DISCLOSED HEREIN AND HEREWITH IS NOT TO BE REPRODUCED, USED, OR DISCLOSED IN WHOLE OR ANY PART TO ANYONE WITHOUT THE PERMISSION OF ALPHA RADIO PRODUCTS LLC.	DRAWN BY: B. FOCKEN DRAFT DATE: 10/13/06	TITLE: ALPHA 8100 CONTROLLER
COMPONENT TYPE = ELECTRICAL CATEGORY = CUSTOM DESIGNATION = NONE	PROCESSOR	SIZE C DRAWING # ABX-X423
	PADS POWERLOGIC DRAWING	SCALE REV. 1.2
		SHEET 2 OF 5

D

D

C

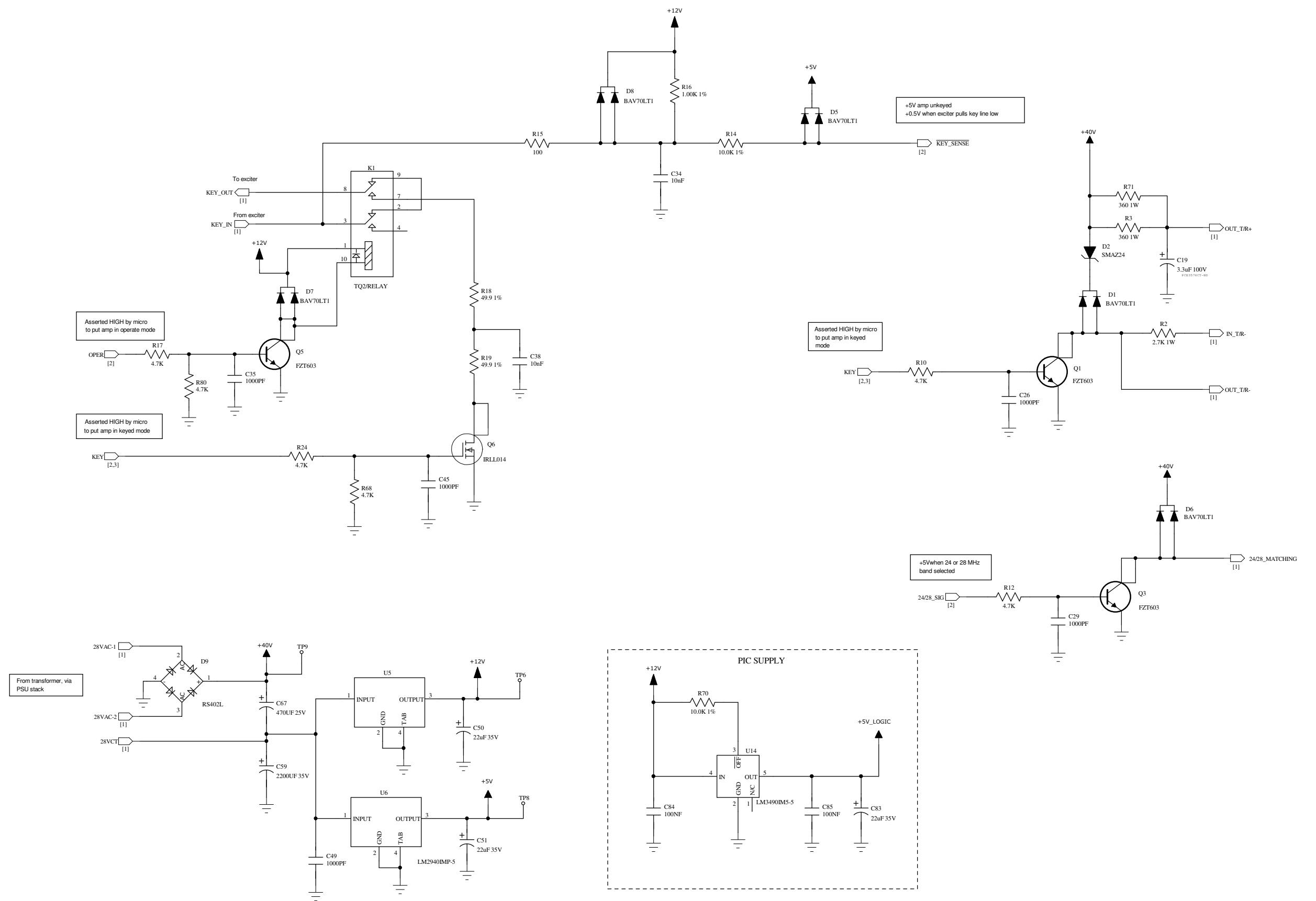
C

B

B

A

A



COMPONENT TYPE = ELECTRICAL
 CATEGORY = CUSTOM
 DESIGNATION = NONE

UNLESS OTHERWISE SPECIFIED DIMENSIONS ARE IN INCHES TOLERANCES ARE: XX +/- 0.01 ANGLE: 0.5 .XXX +/- 0.001		PROJECT NO. 8100
PROPRIETARY NOTICE: THIS DOCUMENT AND DATA DISCLOSED HEREIN AND HEREWITH IS NOT TO BE REPRODUCED, USED, OR DISCLOSED IN WHOLE OR ANY PART TO ANYONE WITHOUT THE PERMISSION OF ALPHA RADIO PRODUCTS LLC.		ENGINEER: G. HARDMAN DRAWN BY: B. FOCKEN DATE: 10/13/06 DRAFT DATE: 10/13/06
LV POWER SUPPLY		TITLE: ALPHA 8100 CONTROLLER
PADS POWERLOGIC DRAWING		SIZE C
		DRAWING # ABX-X423
		REV. 1.2
		SHEET 3 OF 5

ALPHA RADIO PRODUCTS LLC 6185 ARAPAHOE RD. BOULDER, COLORADO 80303 PHONE: (303) 473-9232 FAX: (303) 473-9660	
TITLE: ALPHA 8100 CONTROLLER	
SIZE C	DRAWING # ABX-X423
REV. 1.2	
SHEET 3 OF 5	

D

D

C

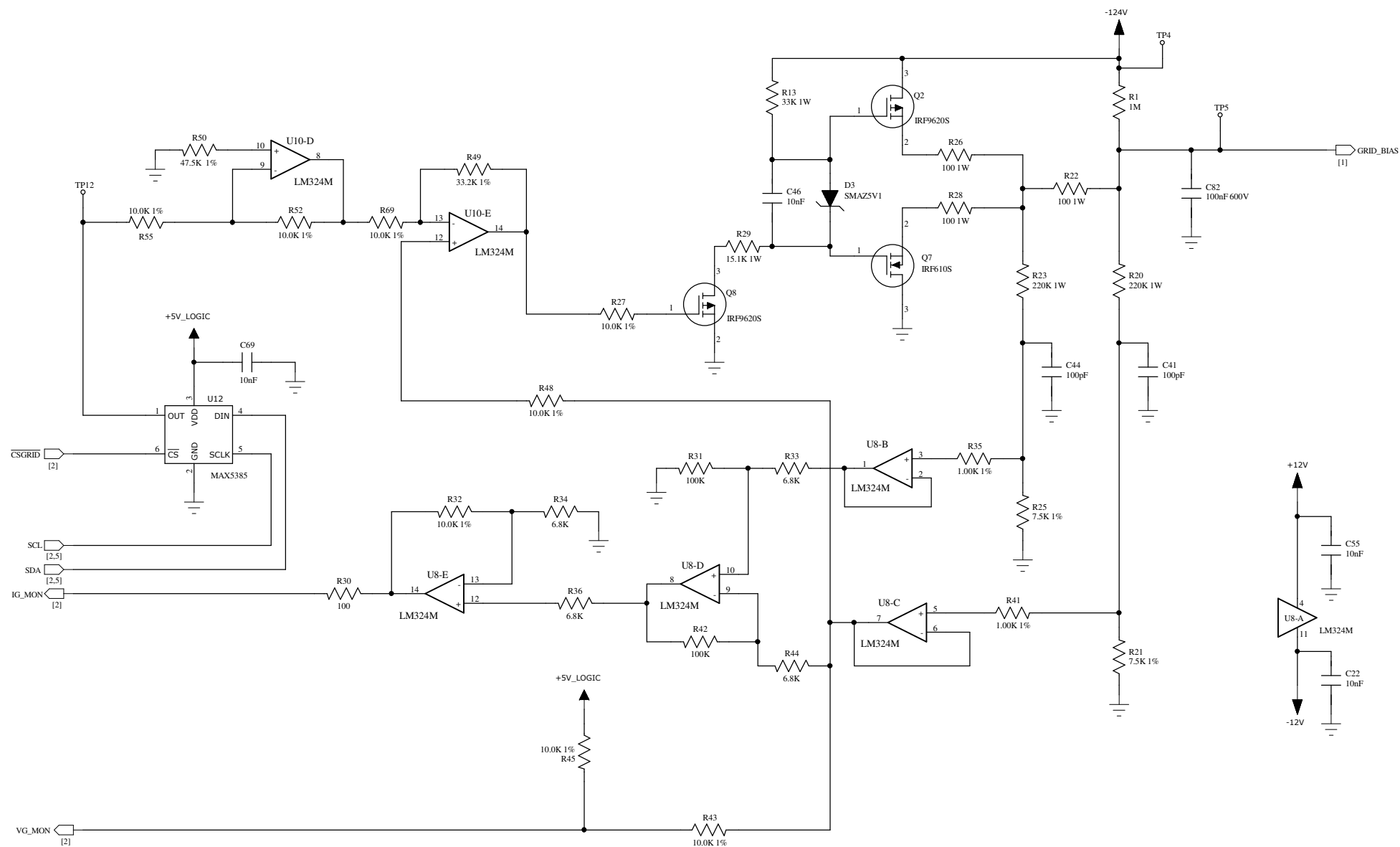
C

B

B

A

A



UNLESS OTHERWISE SPECIFIED DIMENSIONS ARE IN INCHES TOLERANCES ARE: XX +/- 0.01 ANGLE: 0.5 .XXX +/- 0.001	PROJECT NO. 8100	ALPHA RADIO PRODUCTS LLC 6185 ARAPAHOE RD. BOULDER, COLORADO 80303 PHONE: (303) 473-9232 FAX: (303) 473-9660		
	ENGINEER: G. HARDMAN DATE: 10/13/06 DRAWN BY: B. FOCKEN DRAFT DATE: 10/13/06			
PROPRIETARY NOTICE: THIS DOCUMENT AND DATA DISCLOSED HEREIN AND HEREWITH IS NOT TO BE REPRODUCED, USED, OR DISCLOSED IN WHOLE OR ANY PART TO ANYONE WITHOUT THE PERMISSION OF ALPHA RADIO PRODUCTS LLC.	TITLE: ALPHA 8100 CONTROLLER	SIZE C	DRAWING # ABX-X423	REV. 1.2
COMPONENT TYPE = ELECTRICAL CATEGORY = CUSTOM DESIGNATION = NONE	GRID BIAS	SCALE		SHEET 4 OF 5

D

D

C

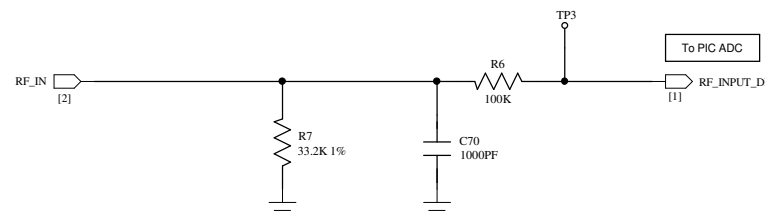
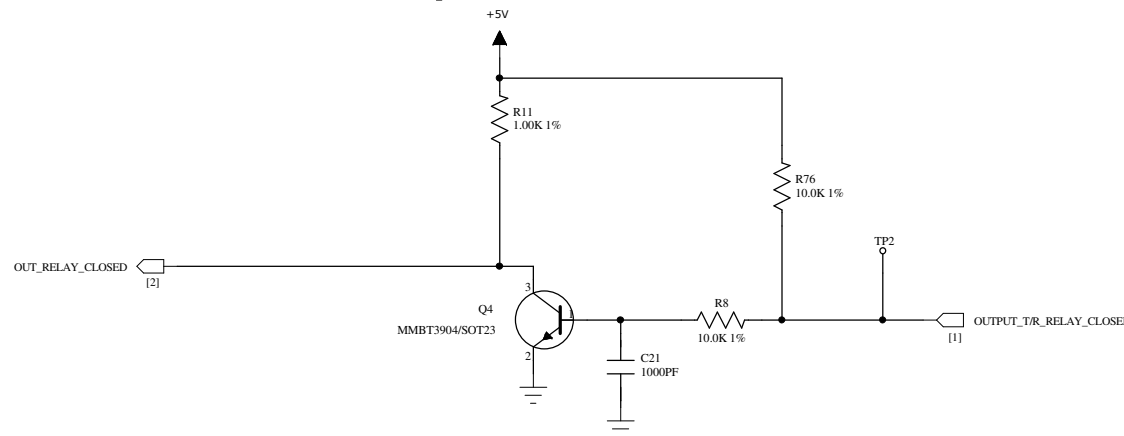
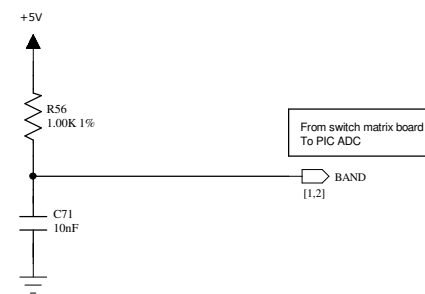
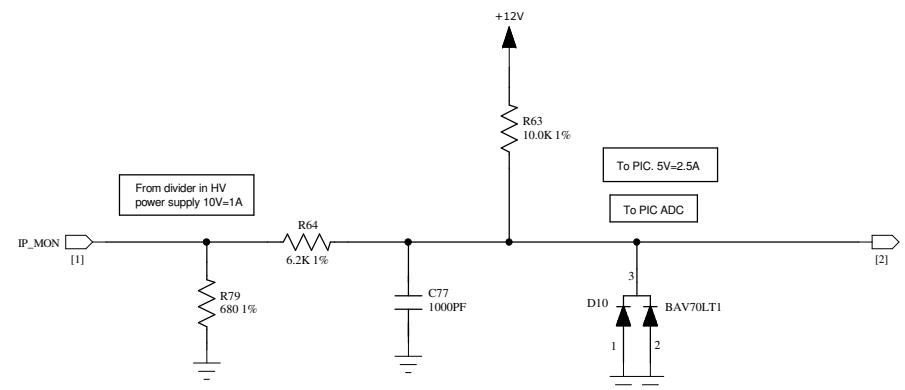
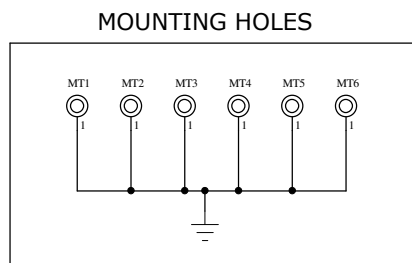
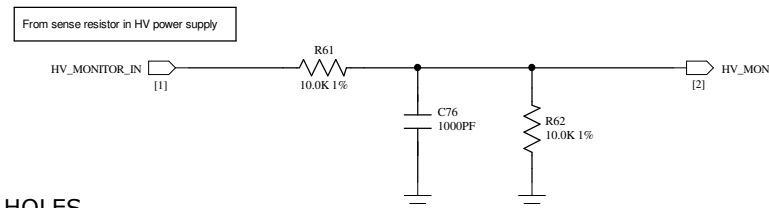
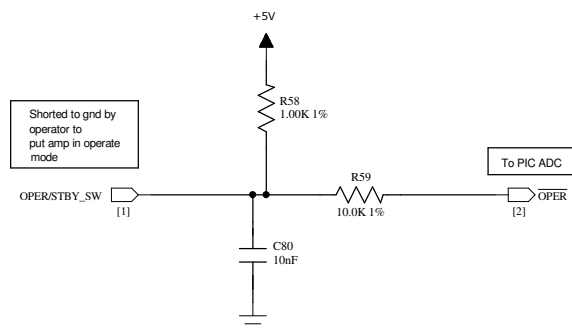
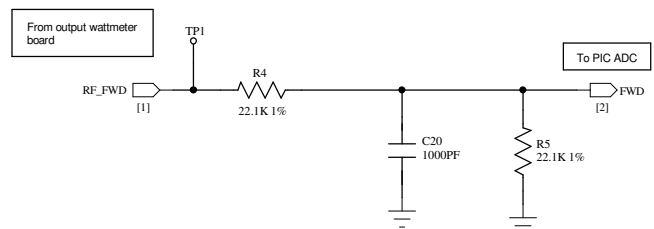
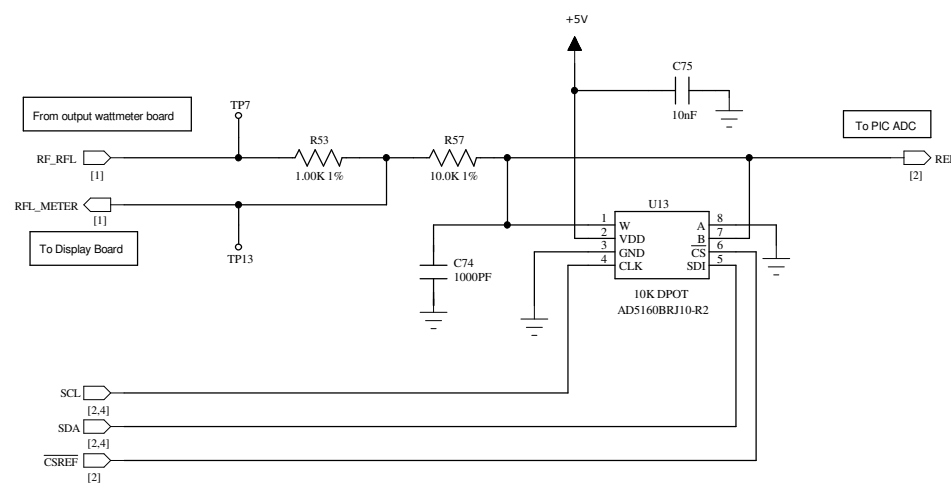
C

B

B

A

A



UNLESS OTHERWISE SPECIFIED DIMENSIONS ARE IN INCHES TOLERANCES ARE: XX +/- 0.01 ANGLE: 0.5 .XXX +/- 0.001	PROJECT NO. 8100	ALPHA RADIO PRODUCTS LLC 6185 ARAPAHOE RD. BOULDER, COLORADO 80303 PHONE: (303) 473-9232 FAX: (303) 473-9660
	ENGINEER: G. HARDMAN DATE: 10/13/06 DRAWN BY: B. FOCKEN DRAFT DATE: 10/13/06	
PROPRIETARY NOTICE: THIS DOCUMENT AND DATA DISCLOSED HEREIN AND HEREWITH IS NOT TO BE REPRODUCED, USED, OR DISCLOSED IN WHOLE OR ANY PART TO ANYONE WITHOUT THE PERMISSION OF ALPHA RADIO PRODUCTS LLC.	TITLE: ALPHA 8100 CONTROLLER	REV. 1.2
COMPONENT TYPE = ELECTRICAL CATEGORY = CUSTOM DESIGNATION = NONE	DRAWING FILE: I/O	SCALE
	PADS POWERLOGIC DRAWING	SHEET 5 OF 5