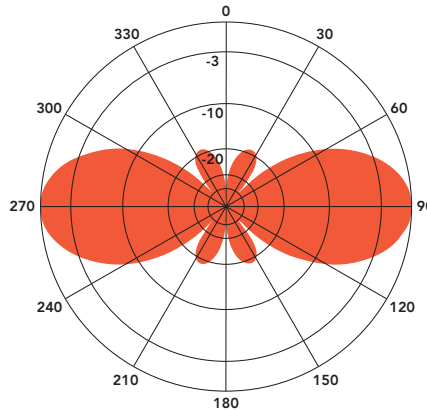


ANT220F2 FIBERGLASS COLLINEAR ANTENNA 2.5 dBd

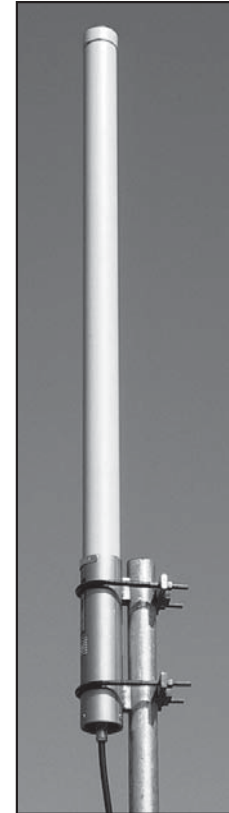
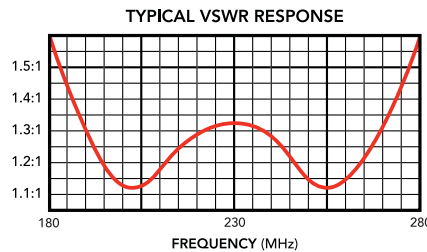
The Telewave ANT220F2 is an extremely rugged collinear antenna, with moderate gain and wide vertical beamwidth. This compact antenna produces 2.5 dBd gain, and is designed for operation in all environmental conditions. The antenna is constructed with brass and copper elements, with a path to ground potential for lightning impulse protection. The ANT220F2 is an excellent choice for wireless PTC systems in urban or rural areas.

All junctions are fully soldered to prevent RF intermodulation, and each antenna is completely protected within a rugged, high-tech radome to ensure survivability in the worst environments. The "Cool Blue" radome provides maximum protection from corrosive gases, ultraviolet radiation, icing, salt spray, acid rain, and wind blown abrasives.

The ANT220F2 includes the ANTC485 dual clamp set for mounting to a 1.5" to 3" O.D. support pipe, and a 24" removable RG-213 N-Male jumper.



ANT220F2 - 230 MHz
Vertical Plane
Gain = 2.58 dBd



American Communication Systems
Discover the Power of Communications™

TO ORDER - VISIT <http://www.ameradio.com>

SPECIFICATIONS			
Frequency (continuous)	195-260 MHz	Dimensions (L x base diam.) in.	51 x 2.75
Gain	2.5 dBd	Tower weight (antenna + clamps)	11 lb.
Power rating (typ.)	500 watts	Shipping weight	14 lb.
Impedance	50 ohms	Wind rating / with 0.5" ice	200 / 150 MPH
VSWR	1.5:1 or less	Maximum exposed area	1.1 ft. ²
Pattern	Omnidirectional	Lateral thrust at 100 MPH	44 lb.
Vertical beamwidth	38°	Bending moment at top clamp	47 ft. lb.
Termination	Recessed N Female 7-16 DIN-F opt.	(100 MPH, 40 PSF flat plate equiv.)	