

INSTALLATION GUIDE FOR YAGI ANTENNAS

American Communication Systems
Discover the Power of Communications™

TO ORDER—VISIT <http://www.ameradio.com>

WARNING:

For your safety, do not install any antenna near power lines, and carefully follow all installation instructions. If the antenna falls toward or contacts any overhead wires, immediately let go and stay away. Call the utility company for assistance. Always use safety devices for tower climbing. Ensure that the tower structure is well grounded for lightning protection.

IMPORTANT BEFORE ASSEMBLING AND MOUNTING:

Carefully read all instructions and study the diagrams.
Check to make sure you have all parts.

PARTS LIST (Fig. 1)

- (1) Antenna assy.
- (1) Mounting plate
- (2) 5/16-18 x 1.0" lg. Scr.
- (4) 5/16-18 x 4.0" lg. Scr.
- (8) Lock washers
- (10) Hex nuts

MOUNTING INSTRUCTIONS

1. Attach mounting plate and antenna boom plate to the mast with 5/16" bolts. The orientation must be set so that antenna elements are vertical. The mounting plate and the boom plate provide self alignment for vertical polarization and orientation.
2. Secure the mounting plate with supplied hex nuts and lock washers to provide reasonable pressure to the mast. Tighten the anti-rotation bolts to resist turning forces on the antenna, and tighten the jam nuts to prevent loosening. These bolts also provide a ground path.
3. The antenna input connector is a Type "N" Female. Connect RF feed cable to antenna output connector. Secure all cables with cable ties. Fig. 2 illustrates a typical method for connecting the RF cable, with a feed cable service loop.
4. Be sure to properly seal the input connector with waterproof tape or other sealing material. See Telewave TWDS-0502 for a recommended method of connector sealing.

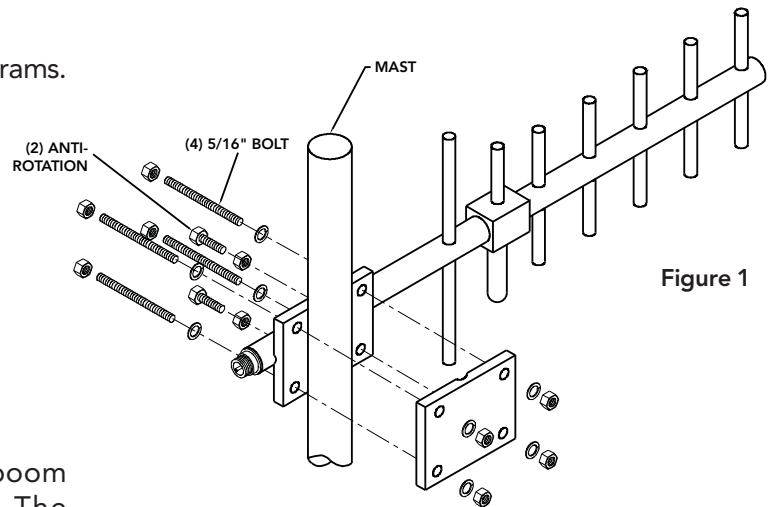


Figure 1

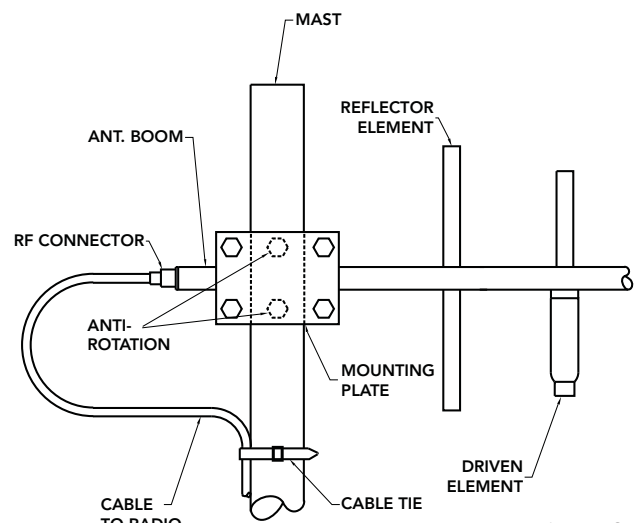


Figure 2