

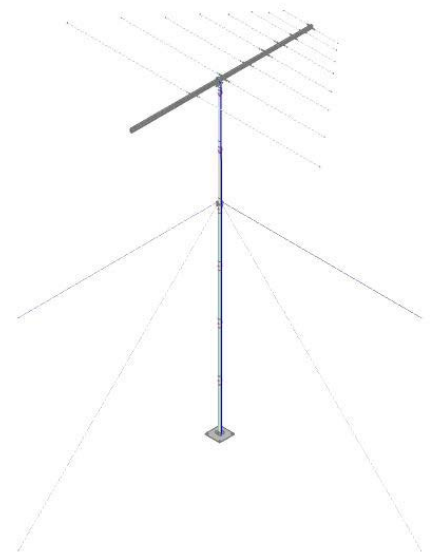
## LPY30-90AL

### VHF log periodic antenna with guyed mast and pivot mount VHF 30-90 MHz

For applications requiring genuine broadband coverage across the entire frequency range 30 to 90 MHz, the LPY30-90 log periodic with sectional guyed mast and pivot mount offers the ideal solution.

Coaxial feeder cable, connectors and other installation accessories are all available separately.

Construction	Fully-welded aluminium with detachable elements and pivot mount, multi-sectional aluminium mast, fibreglass mount section, PVC shielded galvanised steel guy ropes and galvanised ground securing pegs	
Frequency range	30-90 MHz - VHF	
Bandwidth	Full frequency range stated - 60 MHz	
VSWR	<2:1	
Tuning	Factory	
Gain	7 dBi	
Maximum power	200 Watts	
Impedance - nominal	50 Ohms	
Polarisation	Mount horizontal or vertical as required	
H Plane	98°	
E Plane	59°	
Front-to-back ratio	24dB	
DC grounding	Yes	
Cable	200mm RG58A/U stranded, rear exit from bottom boom	
Connector	N-type female jack fitted to cable as standard or specify	
Boom length	3.65 metres	
Longest element	5.0 metres	
Mast dimensions	6.6m assembled, 1.15m packed with 6.3m guy wires	
Weight	13.6kg - antenna and pivot mount only	
Projected area	Antenna: 0.377m <sup>2</sup>	Mast: 0.299m <sup>2</sup>
Wind load at 160kph	Antenna: 38.47kg, 0.377kN	Mast: 36.195kg, 0.355kN
Mounting hardware	90° pivot mount with polarisation adjustment rope 5-piece aluminium mast with 4 x guy wires	



Pivot adjustment mount to alter between horizontal and vertical polarisation. Can be secured in either polarisation with the included rope.



## LPY30-90AL

### VHF log periodic antenna with guyed mast and pivot mount VHF 30-90 MHz

#### Suitable feeder coaxial cable and connectors

 <p>MIL-SPEC RG213 solid PE dielectric, 7 strand copper conductor coaxial cable P/N 7803</p> <p>Available in 100m or 300m rolls or alternatively request a custom cable assembly</p>	 <p>N-type male crimp connector for RG213 coaxial cable P/N 7937</p> <p>Tri-metal plated</p>
 <p>RU400 Solid copper conductor, low loss coaxial cable CNT-400 / LMR-400™ equivalent (* times microwave) P/N 7890</p> <p>Available in 100m, 300m or 500m rolls or alternatively request a custom cable assembly</p>	 <p>N-type male crimp connector for RU400 low loss, solid conductor P/N 8226</p> <p>Tri-metal plated</p>
 <p>RU600 Solid copper conductor, low loss coaxial cable LMR-600™ equivalent (* times microwave) P/N 7890-3</p> <p>Available in 500m roll or alternatively request a custom cable assembly</p>	 <p>N-type male crimp connector for RU600 low loss, solid conductor P/N 8226-2</p> <p>Tri-metal plated</p>
 <p>1/2" helical shielded, foam dielectric coaxial cable P/N ZCG1250SF</p> <p>Available in per metre, or 500m rolls or alternatively request a custom cable assembly</p>	 <p>N-type male clamp connector for 1/2" super flexible, helical shielded, foam dielectric coaxial cable P/N NM1250SF</p> <p>Tri-metal plated</p>
 <p>1/2" corrugated shielding, foam dielectric coaxial cable P/N ZCG1250</p> <p>Available in per metre, or 500m rolls or alternatively request a custom cable assembly</p>	 <p>N-type male clamp connector for 1/2" flexible, corrugated shielded, coaxial cable P/N NM1250</p> <p>Tri-metal plated</p>



## LPY30-90AL

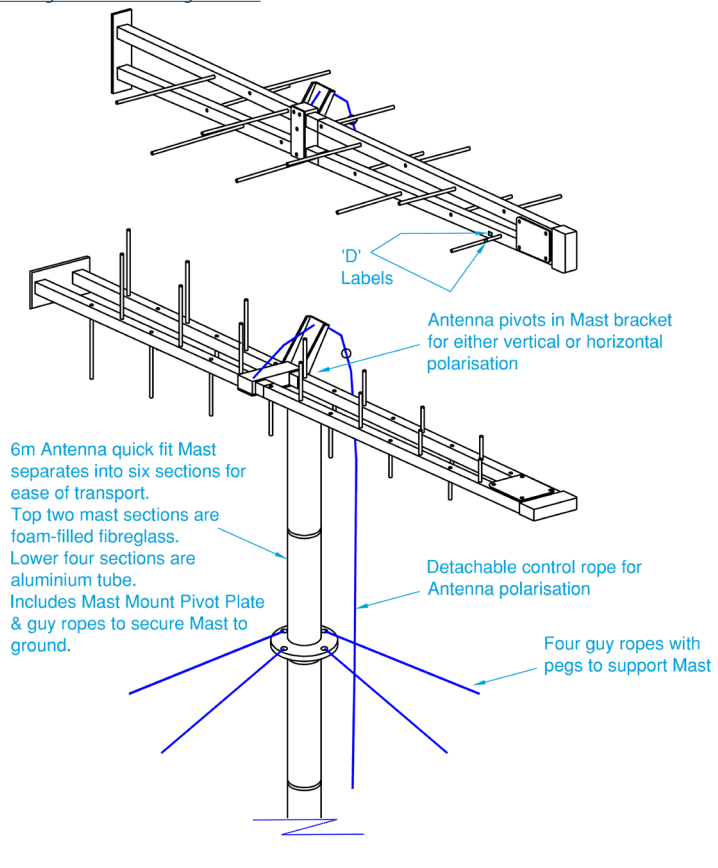
### VHF log periodic antenna with guyed mast and pivot mount VHF 30-90 MHz



#### Mounting instructions - Log Periodic

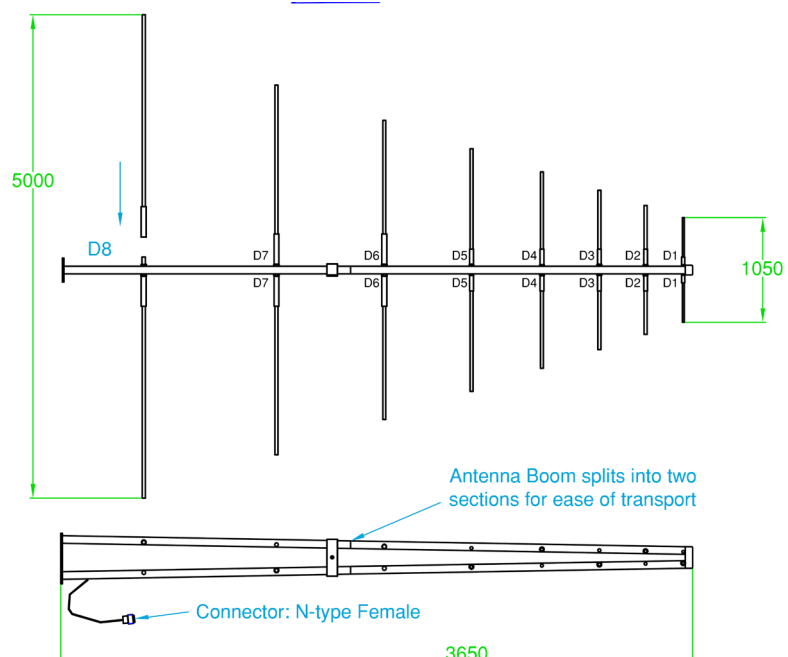
#### CONTENTS:

- LPY30-90 Antenna - split boom.
- Cable - RG58 with N-type & BNC connectors.
- 6-piece quick fit Mast.
- 300 x 300mm Mast Mount Pivot Plate assembly with pegs.
- Four guy ropes with pegs for Mast support.
- Angle Bracket for Antenna polarisation.
- Control rope for Antenna polarisation.
- Claw Hammer for peg install & removal.
- 9 x 300mm steel pegs.



#### ASSEMBLY NOTES:

1. Director Elements are labelled D8 to D1
2. The Antenna has two of each Director: 2 x D8, 2 x D7, .. and so on.
3. Conductivity Paste has been pre-applied to the Director Element's internal thread during manufacture.
4. Attach each Director to its corresponding Label position on the Boom.
5. Use the supplied Tommy Bar to tighten each Director.



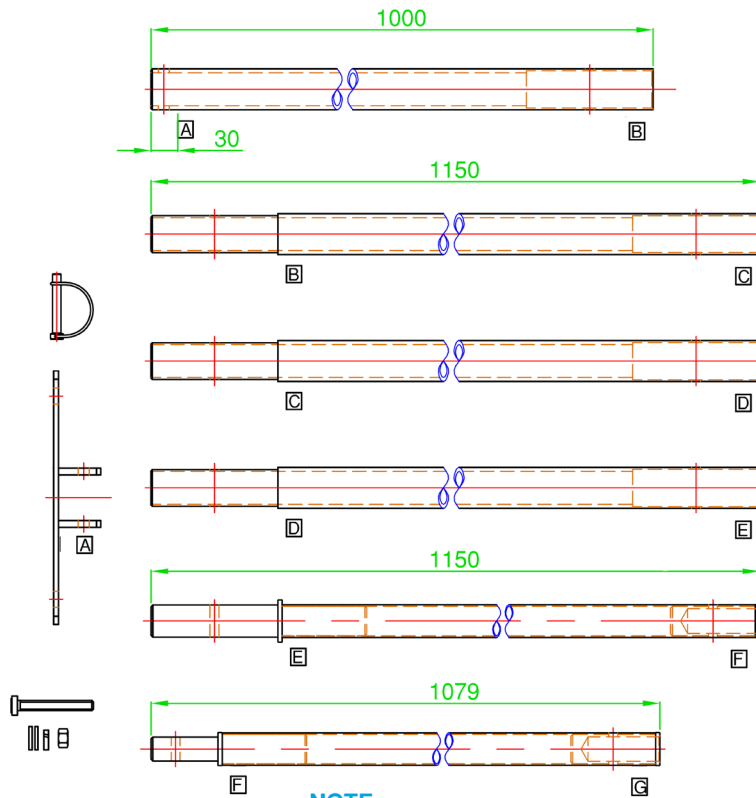


## LPY30-90AL

VHF log periodic antenna with guyed mast and pivot mount  
VHF 30-90 MHz



5-piece aluminium mast



**NOTE:**  
Labels on Fibreglass Mast  
assemblies pre-applied

