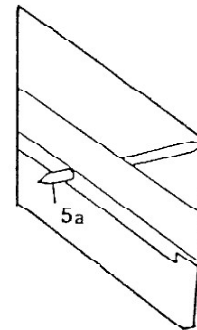
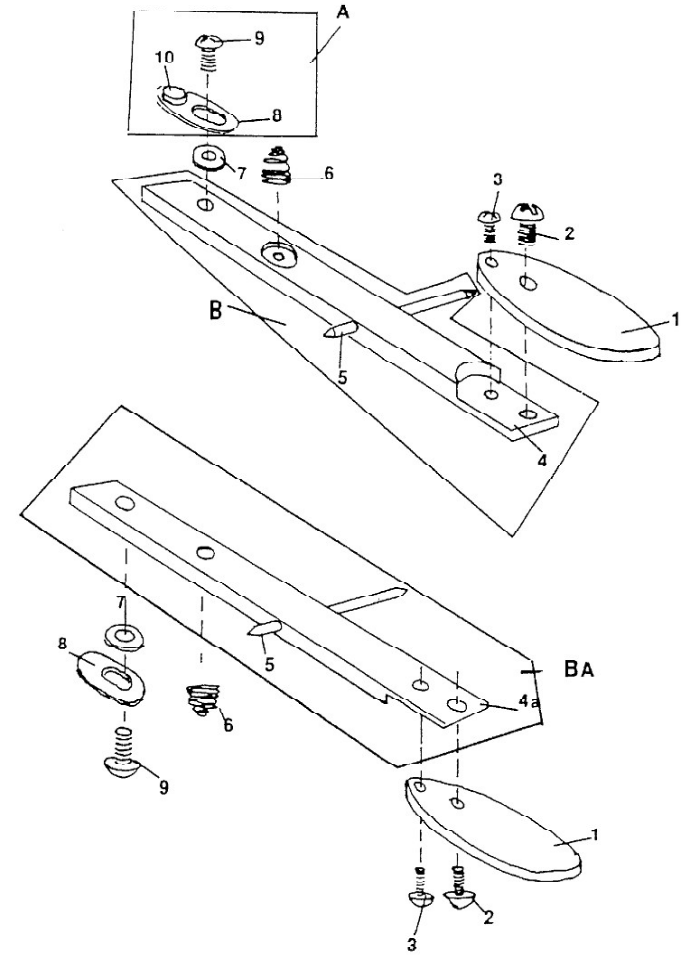
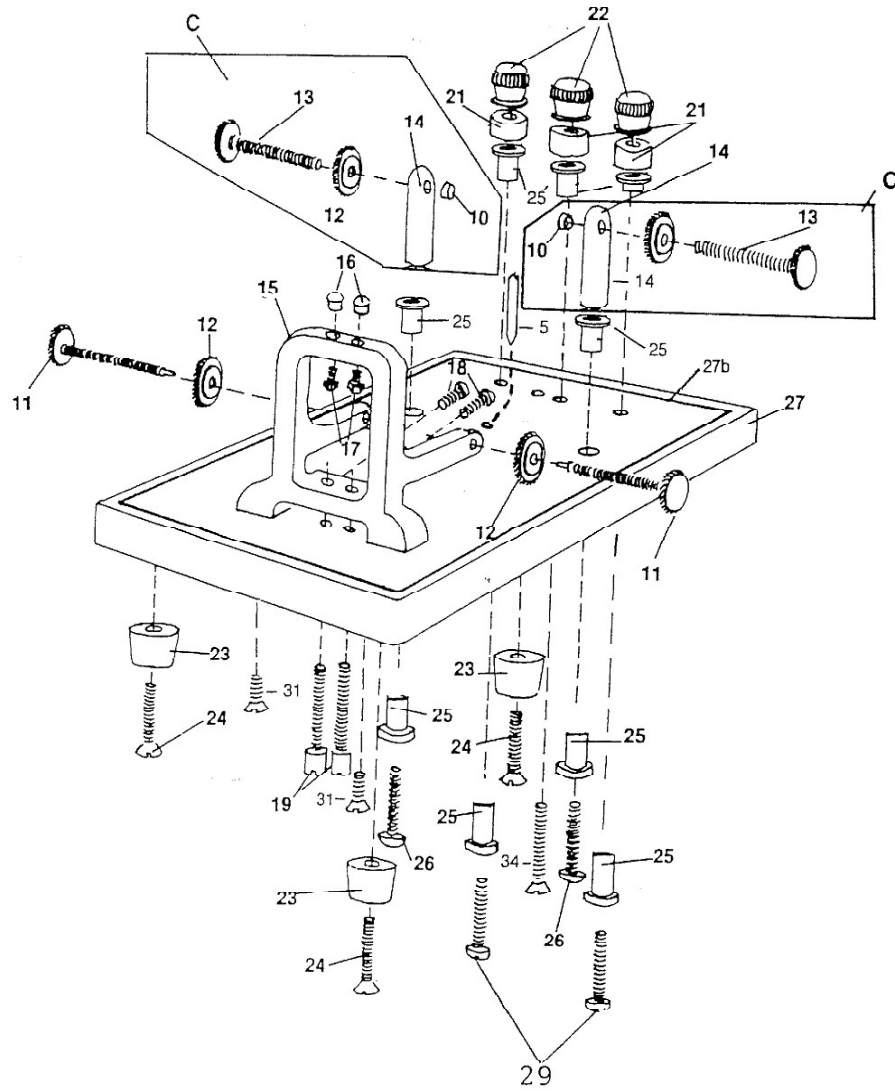


IAMBIC
PRESENTATION-DELUXE-STANDARD



NOTE: TRUNION PIN-USE 5a
FOR STANDARD MODEL ONLY

IAMBIC

Parts List 07/15/2019

Part Number	Part Name	Price	Qty	Amount	Part Number	Part Name	Price	Qty	Amount
I-1	4001 Thumb Piece-Red	7.00			I-21	8012 Binding Post Collar	4.00		
I-1a	4003 Thumb Piece Blk	7.00			I-22	8011 Binding Post Nut	4.00		
I-2	6002 Large Paddle Screw	1.50			I-23	8020 Rubber Feet (each)	2.00		
I-3	4026 Small Paddle Screw	1.50			I-24	8021 Rubber Foot Screw	1.50		
I-4	6020 Lever Bar - left side	26.00			I-25	8035 Nylon Insulator	1.50		
I-4a	6020 Lever Bar - right side	26.00			I-26	8023 Insulation Strip Screw	1.50		
I-5	4015 Deluxe Trunion Pin	8.00			I-27	7040 Chrome Base	70.00		
I-5a	6030 Std Trunion Pin	6.00			I-27a	7041 Blk Base (Std)	45.00		
I-6	4021 Tension Spring	4.00			I-27b	8015A Gold Plate (Presentation)	80.00		
I-7	4013 Contact Slide Washer	2.00			I-28	8005 Contact Strip 1 5/16"	3.00		
I-8	4008 Contact Slide	4.00			I-29	8040 Binding Post Screw	1.50		
I-9	4014 Contact Slide Screw	1.50			I-31	8026 Mainframe Screw	1.50		
I-10	4009 Silver Contact Point (See Note #2)	5.00			I-34	8024 Binding Post Collar Screw	1.50		
I-11	1012 Dot/Dash Tension Screw	4.00			ASSEMBLIES				
I-12	1013 Locknuts	4.00			I-A	408.1 Complete contact slide includes I-8 & I-10	9.00		
I-13	4010 Contact Screw	4.00			I-B	315 Del Lever for left side includes I-4 & I-5	38.00		
I-14	4011 Short Contact Post	8.00			I-BA	314 Std Lever for left side includes I-4 & I-5a	38.00		
I-15	1999 Mainframe	40.00			I-BB	316 Del Lever for right side includes I-4a & I-5	38.00		
I-16	8018 Red Decor. Top Pc.	5.00			I-BD	317 Std Lever for right side includes I-4a & I-5a	38.00		
I-17	1004 Upper trunion screw w/ Jewel (Pres & Del)	11.00			I-C	406 Contact post includes I-10,I-12,I-13 & I-14	26.00		
I-17a	1003 Upper trunion screw w/o ,jewel (Std)	5.00			CP3	Cord and Plug - 3 Plug (1/4" or 3.5mm-circle)	9.95		
I-18	1005 Trunion Lock Screw	1.50				Subtotal			
I-19	1002 Lower Trunion Screw w/ Jewel	11.00				Shipping and Handling (See Note #5)			
I-19a	1001 Lower Trunion Screw w/o Jewel	5.00				Total Amount Enclosed			

ORDERING INFORMATION

(Call) _____

(Date) _____

(Name) _____

(Street) _____

(Telephone) _____

(City) _____ (State) _____ (Zip) _____

HOW PAID: (\$15.00 minimum on credit cards)

_____ Exp. Date: _____

Check/Money Order

Credit Card (Visa, Mastercard, Discover)

(Signature) _____

(Email Address) _____

NOTES

- Please supply complete street address or post office box and zip code.
- If you need new contact points, please refer to our Contact Replacement Service at www.vibroplex.com.
- Please be sure that the form is legible and completely filled out. We cannot process orders that we cannot read.
- If possible, include a day time phone number where you can be reached. Should a problem occur we can contact you.
- Small parts minimum for USA shipping is \$4.08, Canada \$10.05, international \$13.82**

Iambic Paddle Adjustments

ADJUSTMENT #1: *Numbers refer to exploded drawing

Lower Trunion Screws: Before making this adjustment **the set screws on lower portion of mainframe must be loosened.** Under the base you will find the lower trunion screws (#1 Adjustment).

Turn each adjustment screw until the lever moves freely but not any up and down movement.

ADJUSTMENT #2:

Contact Post Assemblies: These assemblies are built together special in the factory. The nut and screw are put through the contact post and then the contact point in pressed into place.

ADJUSTMENT #3:

Contact Slide Assemblies: By loosening the contact slide screw (#9), you have the ability to move the contact slide up or down according to where you need it to line up with the contact post contact.

ADJUSTMENT #4:

Spring Tension: By loosening or tightening either or both the mainframe screws (#11), you have the ability to increase or decrease the tension of the springs. It depends on the operator, either wanting a smooth or snappy return on the levers.

Listed above are basic adjustments for the Iambic paddle. Adjustment #1, Lower trunion screws, are the most common adjustment to make. **Remember to re-tighten the set screws at the base of your mainframe** once your key feels right to you, this will hold your settings tight. After the comfort adjustments are made, then adjustments 2 and 3 can be made. These are required adjustments, assuring that the contact points line up.

By making small adjustments, one at a time, between these variables, optimum paddle spacing and feel can be obtained.