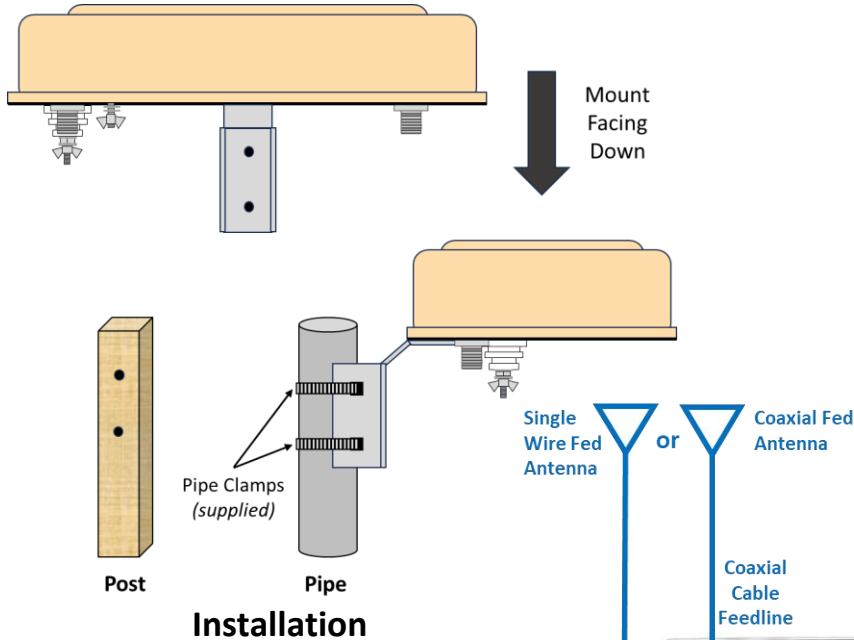
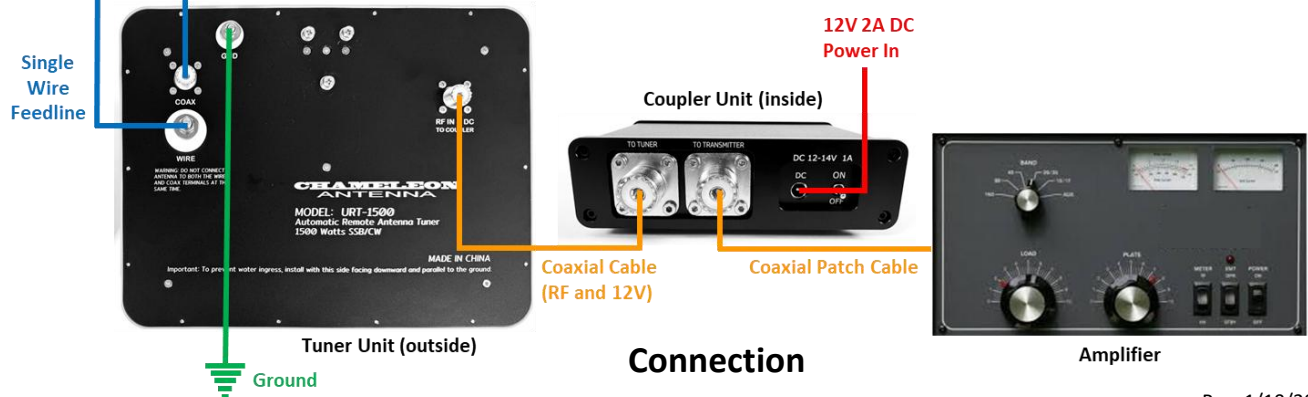


High Power Universal Remote Tuner 1500 (CHA URT1500) Quick Start Guide



See the User Guide
for more information



Operation



To tune the antenna, perform the following steps:

1. Set the transceiver to the frequency on which you want to operate.
2. If your transceiver has an internal antenna tuner, ensure it is bypassed.
3. Set the mode to CW with a straight key or the internal keyer set to straight key. Alternatively, use FM, AM, or RTTY modes. The objective is to transmit a constant power output.
4. Set power level to any value from 5 to 15 Watts.
5. Briefly press or tap the "TUNING" button.
6. Immediately key the transmitter so it produces a constant power output. Unkey the transmitter when the tuning cycle completes (eight seconds or less). The COMPLETE Indicator will illuminate red for one second if tuning was successful. A quick red flash indicates a failure to tune.