

These antenna rotators are designed to be installed inside a tower or beside for a rotating tower or a mast.  
 Torque up to **3800 Nm** , all models are supplied with torsionally **flexible** jaw coupling, square flange (310 mm round C45 steel flange with slotted bolt holes for 6000 model ) and a 230 Vac 50 Hz 0,18 Kw electric motor ( 115 V ac 60 Hz UL on request ). The heavy duty mast clamp is supplied on request ( only for 2500 and 4000 models ). Smart digital control unit and separately power unit are supplied, for computer and remote control , by the internet or LAN ( on request).

**Digital control box**  
 130 x 140 x H 50 mm  
 5.12 x 5.51 x H 1.97 in

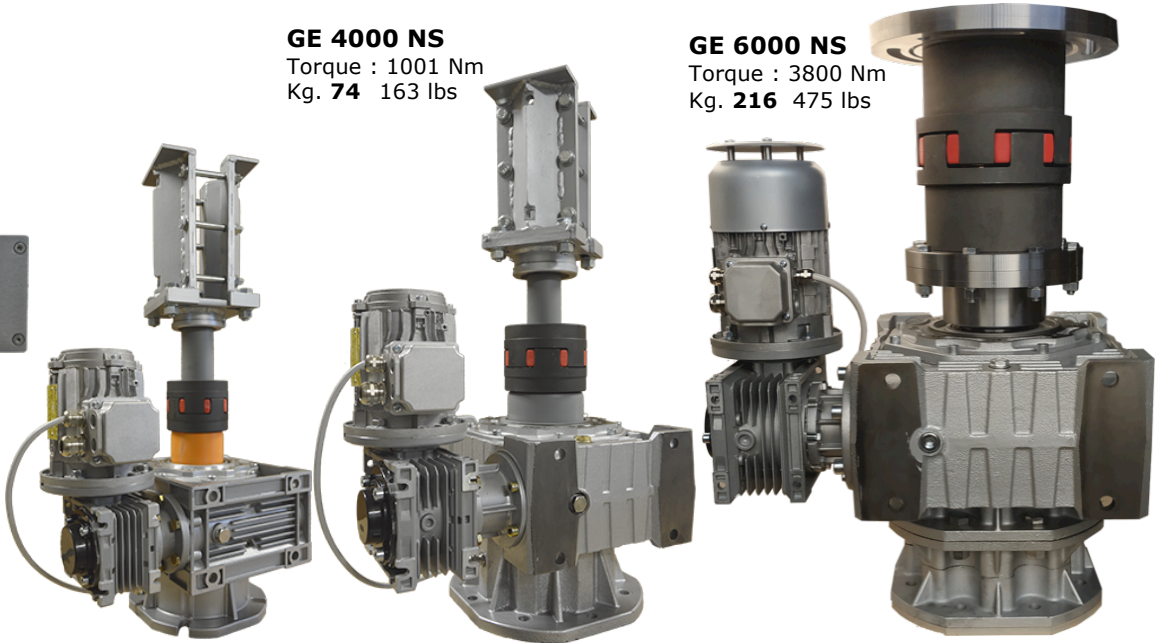


**Power box**  
 235 x 235 x H 90 mm  
 9.25 x 9.25 x H 3.54 in

**GE 2500 NS**  
 Torque : 625 Nm  
 Kg. **38** 84 lbs

**GE 4000 NS**  
 Torque : 1001 Nm  
 Kg. **74** 163 lbs

**GE 6000 NS**  
 Torque : 3800 Nm  
 Kg. **216** 475 lbs



Specifications	Mod. 2500 NS	Mod. 4000 NS	Mod. 6000 NS
Power Torque	625 Nm	1001 Nm	3800 Nm
Brake Torque	1250 Nm	2002 Nm	5320 Nm
Mast clamp	48-76 mm 1" 1/2 - 2" 1/2 Or square flange 160x160mm 6.3 x 6.3 in	48-76 mm 1" 1/2 - 2" 1/2 Or square flange 160x160mm 6.3 x 6.3 in	310 mm (12.20 in) <b>round C45 steel flange</b> with slotted bolt holes
Rotation speed,for 360°	120"	120"	180"
Rotation range <small>Programmable end-stops</small>	Up to 540°	Up to 540°	Up to 540°
Accuracy	± 1°	± 1°	± 1°
Motor power	0.18 Kw	0.18 Kw	0.25 Kw
Main power	230 Vac 50 Hz 115 V ac 60 Hz on request	230 Vac 50 Hz 115 V ac 60 Hz on request	230 Vac 50 Hz 115 V ac 60 Hz on request
Two cables ( one shielded )	3 wires each	3 wires each	3 wires each
	USB	RS 232	"LAN on request"
Digital control unit weight	Kg. 0.8 1.7 lbs	Kg. 0.8 1.7 lbs	Kg. 0.8 1.7 lbs
Power unit weight	Kg. 2.3 5 lbs	Kg. 2.3 5 lbs	Kg. 2.3 5 lbs
Rotator weight	Kg. 38 84 lbs	Kg. 74 163 lbs	Kg. 216 475 lbs
<b>Shipping measures</b>	47x42xH74 cm <b>wood case</b> 18.5x16.53xH29.13 in	47x42xH74 cm <b>wood case</b> 18.5x16.53xH29.13 in	80x80xH100 cm <b>wood case</b> 31.49x31.49xH39.37 in
<b>Shipping weight</b>	51 Kg 112 lbs	86 Kg 190 lbs	270 Kg 594 lbs

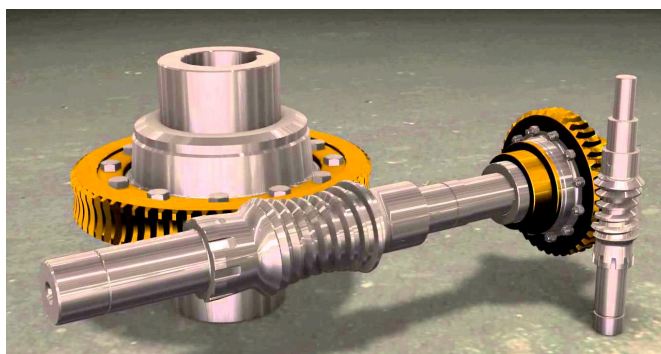
Order n°	Mod.
22 GE2500NS 901	GE 2500NS
22 GE4000NS 901	GE 4000NS
22 GE6000NS 901	GE 6000NS
92 CLAM76NS 902	Mast clamp
24 LANERCNS 000	LAN port
19 31025C45 001	Round Flange
26 UNTMENS1 089	Control Unit 2500,4000,6000

Note 310 mm round C45 steel flange with slotted bolt holes for GE6000NS model



Heavy duty mast clamp GE2500NS, GE 4000NS

GE 2500NS,GE4000NS models  
 GE 2500NS,GE4000NS,GE6000NS models  
 GE 6000NS model  
 Power box and digital Control box , RS232,USB, LAN



Double worm gear technology irreversible under wind load

Aluminium gear box for 2500 model and cast iron for 4000 and 6000

Torsionally **flexible** jaw coupling

RAL 9022 aluminium colour

Temperature range : - 25 °C + 50 °C

Totally water protection



Power Plug 230 Vac 50 Hz  
( 115 Vac 60 Hz On request )

Electric cable,  
up to 100 m ( 328 ft )

Antenna rotator

15 D-SUB modified cable

Control Box

Connection to computer by

RS 232  
Or  
USB  
Or  
LAN ( On request )

Power Box

You can manage the rotator manually  
by the CW or CCW buttons and read  
the degrees on the display

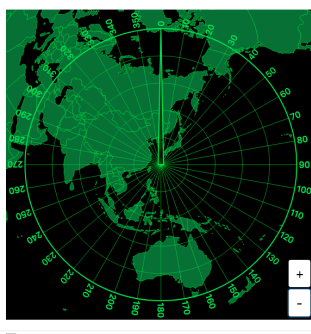
Control Box

- RS 232  
- USB  
- LAN ( On request )

Computer

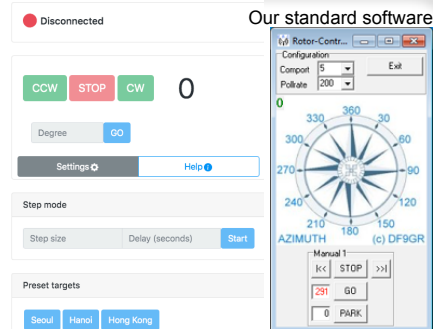
You can manage the rotator manually  
by the CW or CCW buttons and read  
the degrees on the display ...Or....

...by the computer with our official software  
or with softwares like Ham Radio Deluxe ,  
Easy Log, logger 32 , etc.



Our new software with:

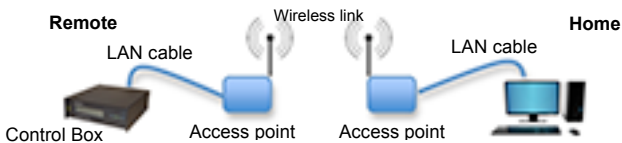
customizable azimuthal map  
Preset targets  
Step mode



Our standard software

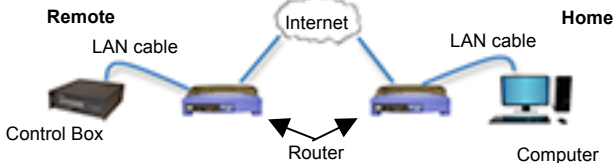
Many computers

If the remote site is near and visible:



Access to a control box in a remote site

If the remote site is connected by the internet



You may also use softwares like TeamViewer for remote a Control Box without LAN  
Smart Rotator Control Box is compatible with RS232-over-ethernet devices on the market.

mm in	2500 NS	4000 NS	6000 NS
A	355 14	420 16.5	530 20.86
B	380 15	420 16.5	663 26.1
C	745 29.3	790 31.1	771 30.35
D	510 20	520 20.5	382 15.03
E	250 9.8	300 11.8	408 16.06
F	170 6.7	170 6.7	252 9.92
G	136 5.36	168 6.6	230 9.05
I	102 4	127 5	170 6.69
L	Ø 210 8.27	Ø 280 11	320 12.59
S	206 8.1	253 9.96	340 13.38
T	238 9.37	295 11.6	400 15.75
U	360 14.2	425 16.7	530 20.86
Y	165 6.5	180 7.1	185 7.28
Z	130 5.1	145 5.7	185 7.28
M	160 6.3	160 6.3	-
H	180 7.1	180 7.1	-
N	266 10.5	266 10.5	-
P	-	-	Ø 310 12.20
V	-	-	25 0.98
Rotators plates holes diagram			
Holes mm in	N°4 Ø15 19/32	N°8 Ø13 1/2	N°8 Ø15 19/32
Ø P	Ø 175 6.89	Ø 230 9.1	Ø 255 10.3
Ø R	Ø 120 4.7	Ø 120 4.7	Ø 120 4.7

