



HF+50 MHz ALL MODE COMMUNICATIONS RECEIVER

# IC-R75

Rugged  
**MIL-STD 810**



Icom Inc.



# WIDE FREQUENCY COVERAGE AND

## Expanded frequency coverage

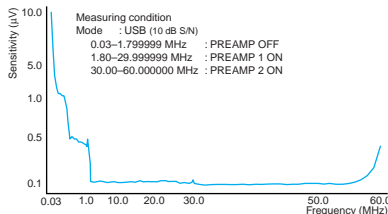
The IC-R75 covers a frequency range that's wider than other HF receivers; 0.03–60.000000 MHz\*. This wide frequency coverage allows you to listen to a variety of communications including marine communications, amateur radio, short wave radio broadcasts and more.

\*Guaranteed 0.1–29.99 MHz and 50–54 MHz only

## High stability receiver circuit

icom's latest wide band technology provides highly stable receive sensitivity over the entire receive frequency range. The IC-R75 makes it easy to catch communications world wide.

### • Receive sensitivity characteristics example



## Superior dynamic range

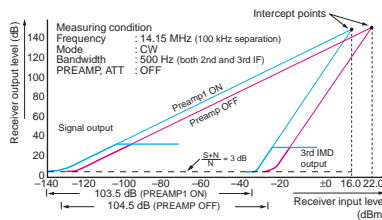
A wide dynamic range of more than 100 dB\*<sup>1</sup>, 104.5 dB\*<sup>2</sup> for 14 MHz band, 102.5 dB\*<sup>2</sup> for 50 MHz band, and a well-designed triple conversion system help min-

imize image and spurious responses for better signal fidelity.

\*<sup>1</sup> Not guaranteed.

\*<sup>2</sup> Not guaranteed; When PREAMP OFF; CW narrow 500 Hz bandwidth; 100 kHz channel spacing

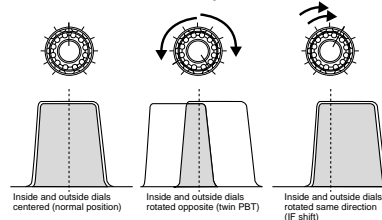
### • Dynamic range characteristics example



## Twin PBT capability

The PBT (passband tuning) function narrows and moves the IF passband at two stages to efficiently eliminate interfering signals.

### Twin PBT operation



## DSP capabilities

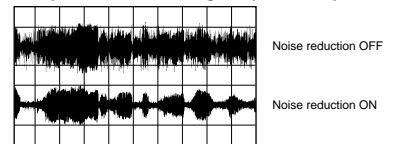
DSP (Digital Signal Processor) filtering in the AF stage is available with the optional UT-106 DSP UNIT\*. The DSP provides the following functions:

\* Already installed with some versions.

### Noise reduction:

Pulls desired AF signals from noise. Outstanding S/N ratio is achieved, providing clean audio in SSB, AM and FM. Pull weak signals right out of the noise.

### Comparison of receive signal speaker output



### Automatic Notch filter:

This automatically minimizes beat signals and protects the receive signal. Also, the notch frequency is automatically adjusted to follow interfering beat signals—reducing interference from RTTY signals during SSB operation for example.

## FM mode standard

Unlike many other HF/50 MHz receivers there is no need to install an additional unit for FM mode reception on the 29 and 50 MHz bands.

The IC-R75 covers a wide frequency range from 0.03 to 60 MHz allowing you to listen in to a world of information. With innovative features such as twin passband tuning, DSP capabilities, remote PC control and more — shortwave listening is easier than ever. All this comes in a compact, lightweight package that can be conveniently used in your ham shack, den or vehicle.

HF+50 MHz ALL MODE COMMUNICATIONS RECEIVER

# IC-R75

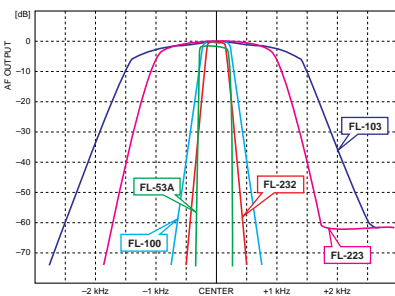
# INNOVATIVE FEATURES...

## Flexible filter selection

Up to two optional filters\* can be installed, providing flexible band width selection and filter combinations.

\*One each for 9 MHz and 455 kHz IF stage.

	1st IF 9 MHz stage	2nd IF 455 kHz stage
<b>SSB</b>	FL-103 (2.8 kHz) FL-223 (1.9 kHz)	FL-222 (1.8 kHz) FL-257 (3.3 kHz)
<b>CW/RTTY</b>	FL-100 (500 Hz) FL-101 (250 Hz) FL-232 (350 Hz)	FL-52A (500 Hz) FL-53A (250 Hz)



## Alphanumeric readout

The function display has an alphanumeric readout that indicates up to 8-character memory names for easy recognition.

## Selectable RF gain/squelch control

The RF gain and/or squelch control can be set to the [SQL] control in *set mode* to match your operating preference.

## Other outstanding features...

- Compact body
- Digital bar S-meter with peak hold
- Front mounted speaker for easy listening
- Internal clock with ON/OFF, sleep timer
- Numeric keypad for direct frequency or memory channel input
- Attenuator
- 2-level preamp
- Selectable AGC (FAST/SLOW/OFF)
- Noise blanker
- 99 memories plus 2 program scan edges
- Ample scanning functions available
- CW pitch control and CW reverse mode and more...

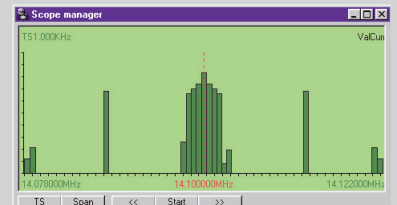
## Rear panel view



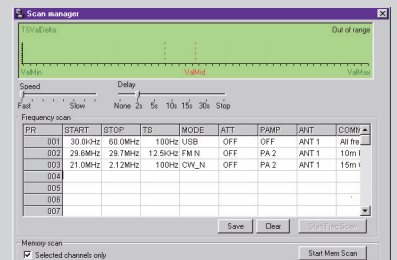
## Optional PC remote control —RS-R75



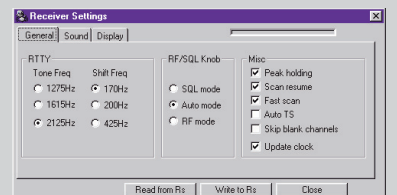
**FRONT PANEL**—gives you access to all switches and controls on the front panel of the IC-R75.



**BAND SCOPE**—shows signal conditions around a specified frequency.



**SCAN MANAGER**—used to graphically display scans in progress and to control scan functions.



**SETTINGS**—allows you to adjust settings in 3 categories: General, Sound and Display, to suit your operating preferences.

Ctrl	Sc	Description	Ctrl	Sc	Description
00	00	Sets frequency (transceive)	10	00	Sets 9 kHz tuning step
01	xx	Sets mode (transceive)	06	06	Sets 10 kHz tuning step
02	00	Reads band edge frequencies	07	07	Sets 12.5 kHz tuning step
03	00	Reads frequency	08	08	Sets 20 kHz tuning step
04	00	Reads mode	09	09	Sets 25 kHz tuning step
05	00	Sets frequency	10	10	Sets 500 kHz tuning step
06	00	Sets USB mode	11	11	Sets 1 MHz tuning step
01	01	Sets LSB mode	11	00	Turns attenuator OFF
02	01	Sets AM mode	20	00	Turns attenuator ON
03	01	Sets CW mode	12	00	Selects ANT1
04	01	Sets RTTY mode	01	01	Selects ANT2
05	01	Sets FM mode	13	00	Speech all contents
07	01	Sets CW-R mode	01	01	Speech operating freq. ±S level
08	01	Sets RTTY-R mode	14	02	Speech operating mode
07	02	Selects VFO operation	01	01	Reads/Sets AF level
08	02	Transfer memory operation	02	02	Reads/Sets RF gain level
xx	xx	Set memory channel	03	03	Reads/Sets SQL level
09	00	Writes to memory	06	06	Reads/Sets NR level
0A	00	Transfer memory contents to VFO	07	07	Reads/Sets TWIN PBT1 (inside)
0A	00	Clears the memory channel	08	08	Reads/Sets TWIN PBT1 (outside)
0E	00	Stops scan	01	01	Reads/Sets CVT Cvt level
01	01	Starts program/memory scan	15	01	Reads the squelch condition
02	02	Starts program scan	02	02	Reads signal strength level
03	03	Starts auto memory write scan	16	02	Reads/Sets the priority
22	00	Starts memory scan	12	02	Reads/Sets the AGC
23	00	Starts select memory scan	22	02	Reads/Sets the noise blanker
80	00	Turns a "select" setting OFF	40	02	Reads/Sets the noise reduction
81	00	Turns a "select" setting ON	41	02	Reads/Sets the auto notch
00	00	Turns scan resume OFF	18	00	Turns power OFF
03	00	Turns scan resume ON	01	01	Turns power ON
10	00	Sets 100 Hz tuning step	19	00	Reads receiver's ID code
01	01	Sets 1 kHz tuning step	1A	00	Reads/Writes memory contents
02	01	Sets 1.5 kHz tuning step	01	01	Reads/Sets the IF filter
03	01	Sets 5 kHz tuning step	02	02	Reads/Sets SET mode
04	01	Sets 6.25 kHz tuning step			

All available functions can be controlled and simple memory editing from a PC running the optional RS-R75 REMOTE CONTROL SOFTWARE. In addition, this software also provides a simple bandscope function. Icom's current CI-V capability will allow you to control the IC-R75 with other programs.

## SPECIFICATIONS

### GENERAL

- Frequency coverage : 0.03–60.000000 MHz\*  
\*0.03–29.999999 MHz only for Asia version; specifications guaranteed 0.1–29.99 MHz and 50–54 MHz only
- Mode : USB, LSB, CW, RTTY, AM, FM
- Number of memory channels : 101 (99 regular, 2 scan edges)
- Frequency stability : Less than  $\pm 7$  ppm from 1 min. to 60 min. after power on. After that rate of stability less than  $\pm 1$  ppm/hr. at +25°C (+77°F). Temperature fluctuations 0°C to +50°C (+32°F to +122°F) less than  $\pm 5$  ppm.
- Power supply requirement : 13.8 V DC  $\pm 15\%$  (negative ground)
- Current drain (at 13.8 V DC) : Standby 0.9 A  
Max. audio 1.1 A
- Antenna connector : SO-239 (50  $\Omega$ ), push connection terminal (500  $\Omega$ )
- Dimensions : 241(W)  $\times$  94(H)  $\times$  229(D) mm  
(projections not included)
- Weight (approx.) : 3.0 kg; 6 lb 10 oz
- REMOTE connector : RS-232C D-sub 9-pin
- CI-V connector : 2-conductor 3.5 (d) mm ( $1/8$ )

### RECEIVER

- Receive system : Triple-conversion superheterodyne system
- Intermediate frequencies :

Mode	1st (MHz)	2nd (MHz)	3rd (kHz)
USB*/LSB*	69.0115	9.0115	455
CW*	69.0106	9.0106	455.9
RTTY*	69.0105	9.0105	456
AM*	69.0100	9.0100	450
FM	69.0115	9.0115	450

\*May differ according to selected IF filter.

### • Sensitivity

Frequency range	SSB/CW/RTTY 10 dB S/N	AM 10 dB S/N	FM 12 dB SINAD
0.1–1.8 MHz*1	2.0 $\mu$ V	5.6 $\mu$ V	—
1.8–28 MHz*2	0.16 $\mu$ V	1.6 $\mu$ V	—
28–29.99 MHz*2	0.16 $\mu$ V	1.6 $\mu$ V	0.22 $\mu$ V
50–54 MHz*3	0.13 $\mu$ V	1.0 $\mu$ V	0.2 $\mu$ V

\*1Preamp: OFF; \*2Preamp 1: ON; \*3Preamp 2: ON

- SQL sensitivity (threshold) : SSB, CW, RTTY Less than 5.6  $\mu$ V \*1  
FM Less than 0.32  $\mu$ V \*2  
\*1Preamp 1: ON; \*2preamp 2: ON
- Selectivity : SSB, CW, RTTY More than 2.1 kHz/–6 dB  
Less than 4.0 kHz/–60 dB  
AM More than 6 kHz/–6 dB  
Less than 20 kHz/–50 dB  
FM More than 12 kHz/–6 dB  
Less than 30 kHz/–40 dB
- Spurious and image rejection ratio: More than 70 dB (except IF through/50 MHz band)
- Audio output power : More than 2.0 W at 10% distortion with an 8  $\Omega$  load (at 13.8 V DC)
- PHONES connector : 3-conductor 6.35 (d) mm ( $1/4$ " )
- External SP connector : 2-conductor 3.5 (d) mm ( $1/8$ " )/8  $\Omega$

The IC-R75 has been tested to and passed the MIL-STD requirements and strict environmental standards for shock (MIL 810C, D, E) and vibration (MIL 810C, D, E).

### Supplied accessories:

- AC adapter or DC power cable (depending on version)
- Spare fuse

All stated specifications are typical and subject to change without notice or obligations.

## OPTIONS



**CR-282 HIGH STABILITY CRYSTAL UNIT**  
Contains a temperature-compensating oven heater and crystal unit for improved frequency stability. Frequency stability:  $\pm 0.5$  ppm



**UT-102 VOICE SYNTHESIZER**  
Announces the operating mode, frequency, signal strength level and the time.



**UT-106 DSP UNIT**  
Provides AF DSP functions such as noise reduction and auto notch. Already installed with some versions.



**CT-17 CI-V LEVEL CONVERTER**  
For remote receiver control using a PC equipped with an RS-232C port.

### RS-R75 REMOTE CONTROL SOFTWARE

#### Supplied items;

- Application CD-ROM
- RS-232C serial interface cable

Allows you to control the receiver from your PC (for Microsoft® Windows® 95 or Windows® 98).

Microsoft and Windows are registered trademarks of Microsoft Corporation.



9 MHz filters

- FL-100 CW/RTTY narrow;** 500 Hz/–6 dB
- FL-101 CW narrow;** 250 Hz/–6 dB
- FL-103 SSB wide;** 2.8 kHz/–6 dB
- FL-223 SSB narrow;** 1.9 kHz/–6 dB
- FL-232 CW/RTTY narrow;** 350 Hz/–6 dB



455 kHz filters

- FL-52A CW/RTTY narrow;** 500 Hz/–6 dB
- FL-53A CW narrow;** 250 Hz/–6 dB
- FL-222 SSB narrow;** 1.8 kHz/–6 dB
- FL-257 SSB wide;** 3.3 kHz/–6 dB

**IC-MB5 MOBILE BRACKET**  
Communications receiver bracket for mobile operation.

**MB-23 CARRYING HANDLE**  
For easy portable operation.

**AD-55/AV AC DAPTER**  
Allows you to power the receiver via domestic AC.

## Icom Inc.

1-1-32, Kami-minami, Hirano-ku, Osaka 547-0003, Japan Phone: +81 (06) 6793 5302 Fax: +81 (06) 6793 0013 URL: <http://www.icom.co.jp/world/index.html>

## Count on us!

### Icom America Inc.

2380 116th Avenue NE,  
Bellevue, WA 98004, U.S.A.  
Phone : +1 (425) 454-8155  
Fax : +1 (425) 454-1509  
E-mail : [sales@icomamerica.com](mailto:sales@icomamerica.com)  
URL : <http://www.icomamerica.com>

### Icom Canada

Glenwood Centre #150-6165 Highway 17,  
Delta, B.C., V4K 5B8, Canada  
Phone : +1 (604) 952-4266  
Fax : +1 (604) 952-0090  
E-mail : [info@icomcanada.com](mailto:info@icomcanada.com)  
URL : <http://www.icomcanada.com>

### Icom (Australia) Pty. Ltd.

Unit 1 / 103 Garden Road,  
Clayton, VIC 3168 Australia  
Phone : +61 (03) 9549 7500  
Fax : +61 (03) 9549 7505  
E-mail : [sales@icom.net.au](mailto:sales@icom.net.au)  
URL : <http://www.icom.net.au>

### Icom New Zealand

146A Harris Road, East Tamaki,  
Auckland, New Zealand  
Phone : +64 (09) 274 4062  
Fax : +64 (09) 274 4708  
E-mail : [inquiries@icom.co.nz](mailto:inquiries@icom.co.nz)  
URL : <http://www.icom.co.nz>

### Icom (Europe) GmbH

Communication Equipment  
Himmelgeister Str. 100,  
D-40225 Düsseldorf, Germany  
Phone : +49 (0211) 346047  
Fax : +49 (0211) 333639  
E-mail : [info@icom-europe.com](mailto:info@icom-europe.com)  
URL : <http://www.icomeurope.com>

### Icom Spain S.L.

Ctra. Rubi, No. 88 "Edificio Can Castanyer"  
08190, Sant Cugat del Valles, Barcelona, Spain  
Phone : +34 (93) 590 26 70  
Fax : +34 (93) 599 04 46  
E-mail : [icom@icomspain.com](mailto:icom@icomspain.com)  
URL : <http://www.icomspain.com>

### Icom (UK) Ltd.

Unit 9, Sea St., Herne Bay,  
Kent, CT6 8LD, U.K.  
Phone : +44 (01227) 741741  
Fax : +44 (01227) 741742  
E-mail : [info@icomuk.co.uk](mailto:info@icomuk.co.uk)  
URL : <http://www.icomuk.co.uk>

### Icom France s.a.s.

Zac de la Plaine,  
1 Rue Brindejone des Moulinais, BP 45804,  
31505 Toulouse Cedex 5, France  
Phone : +33 (5) 61 36 03 03  
Fax : +33 (5) 61 36 03 00  
E-mail : [icom@icom-france.com](mailto:icom@icom-france.com)  
URL : <http://www.icom-france.com>

### Icom Polska

Sopot, 3 maja 54, Poland  
Phone : +48 (58) 550 7135  
Fax : +48 (58) 551 0484  
E-mail : [icompolkska@icompolkska.com.pl](mailto:icompolkska@icompolkska.com.pl)  
URL : <http://www.icompolkska.com.pl>

### Asia Icom Inc.

6F No. 68, Sec. 1 Cheng-Teh Road,  
Taipei, Taiwan, R.O.C.  
Phone : +886 (02) 2559 1899  
Fax : +886 (02) 2559 1874  
E-mail : [sales@asia-icom.com](mailto:sales@asia-icom.com)  
URL : <http://www.asia-icom.com>

### Beijing Icom Ltd.

10C07, Long Silver Mansion, No.88, Yong Ding  
Road, Haidian District, Beijing, 100039, China  
Phone : +86 (010) 5889 5391/5392/5393  
Fax : +86 (010) 5889 5395  
E-mail : [bjicom@bjicom.com](mailto:bjicom@bjicom.com)  
URL : <http://www.bjicom.com>

Your local distributor/dealer: