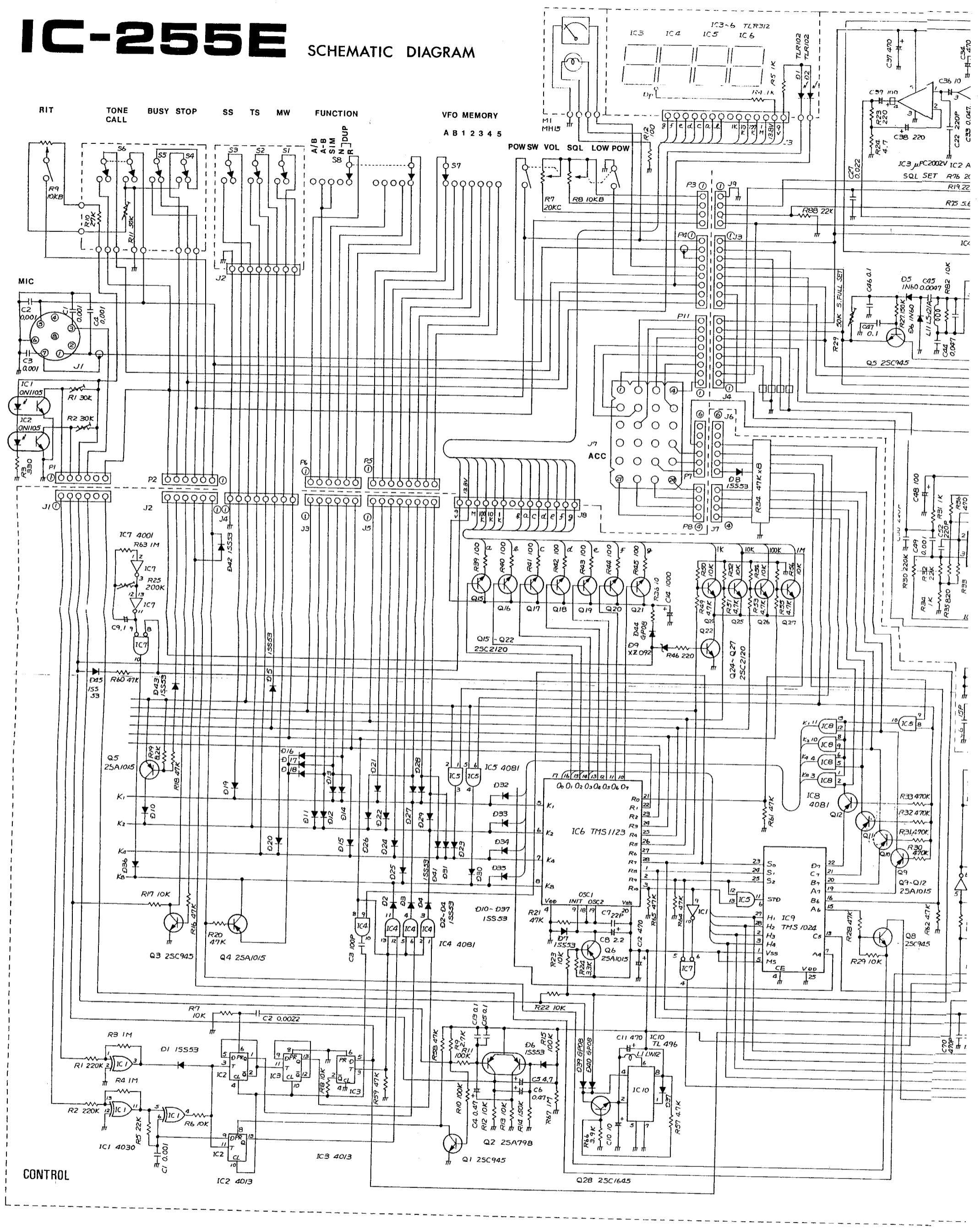
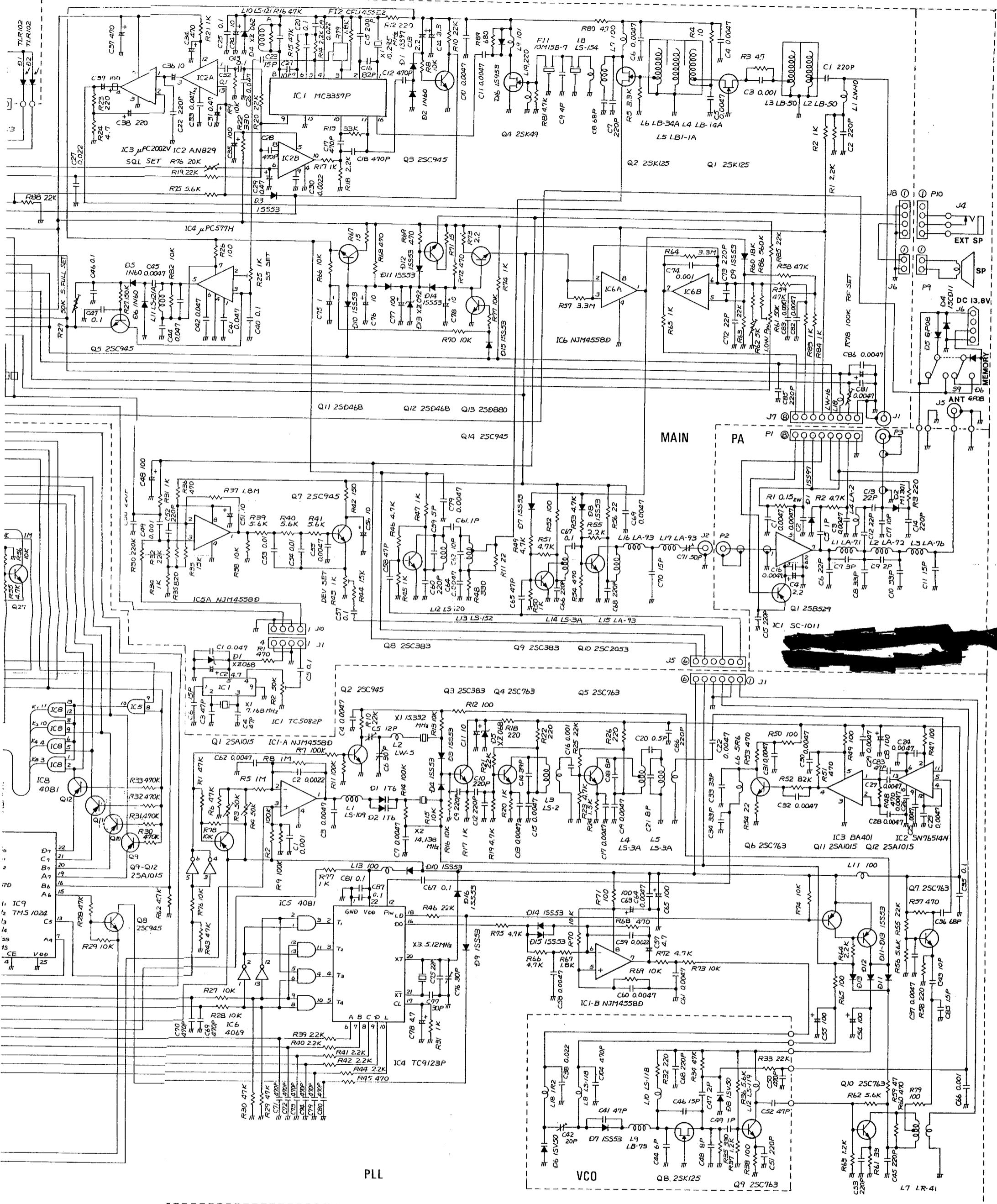


# IC-255E SCHEMATIC DIAGRAM







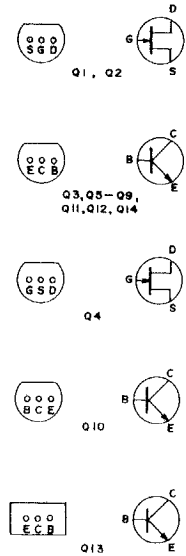
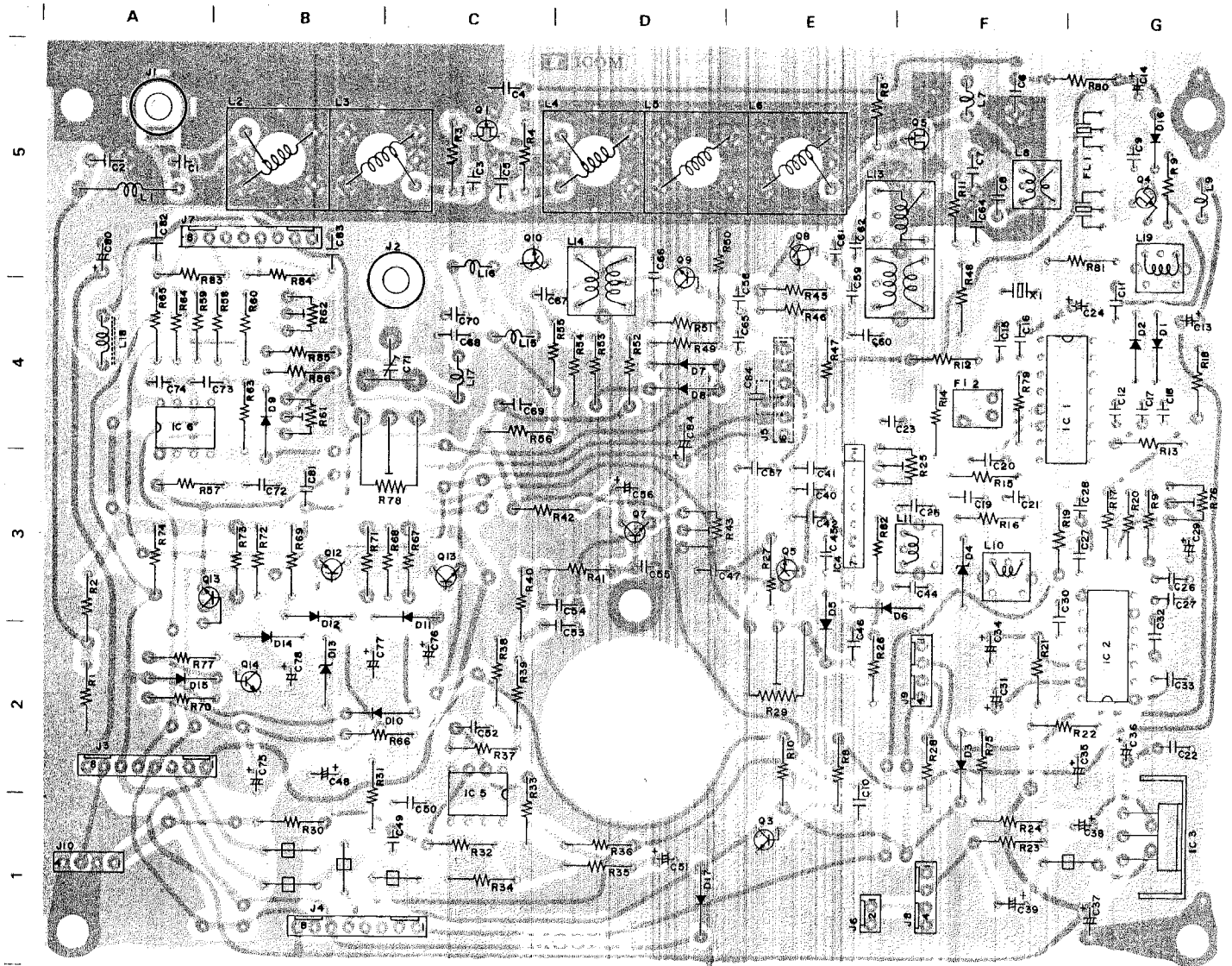
# ICOM

# IC-255E



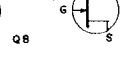
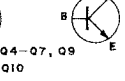
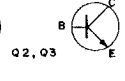
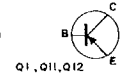
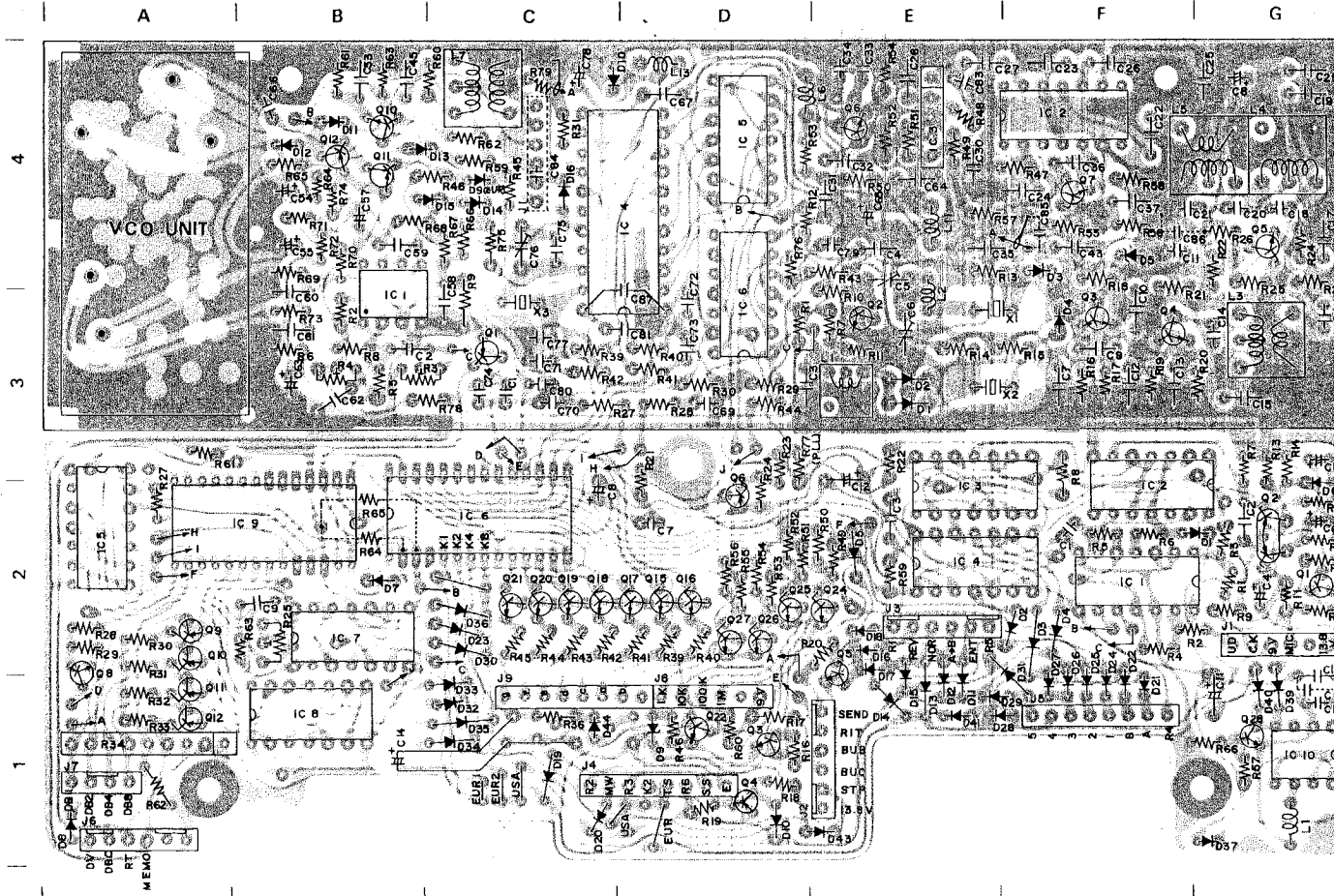
# BOARD L

## MAIN UNIT



# AYOUT

## PLL & DRIVER UNIT

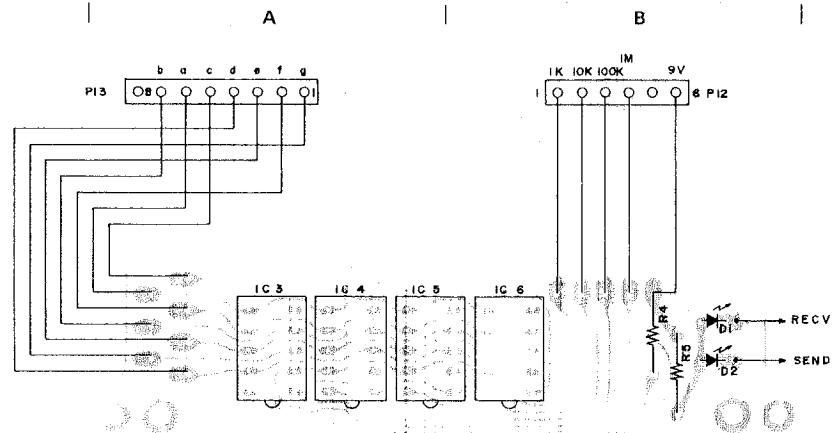


**UNIT**



**EF UNIT**

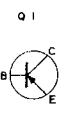
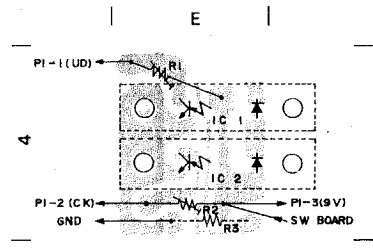
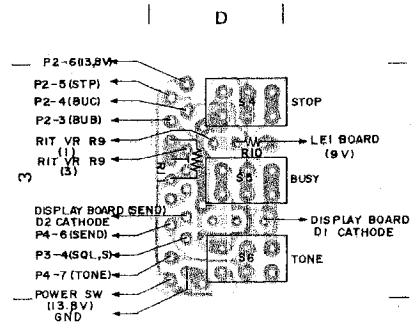
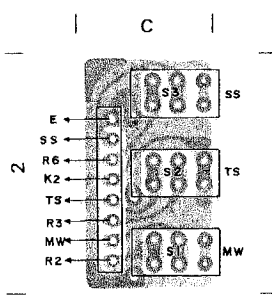
■ DISPLAY BOARD



■ SWITCH BOARD (A)

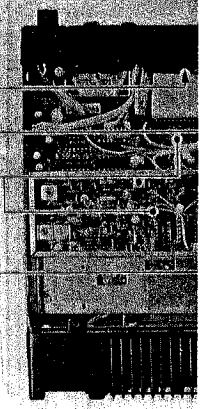
■ SWITCH BOARD (B)

■ LEI BOARD



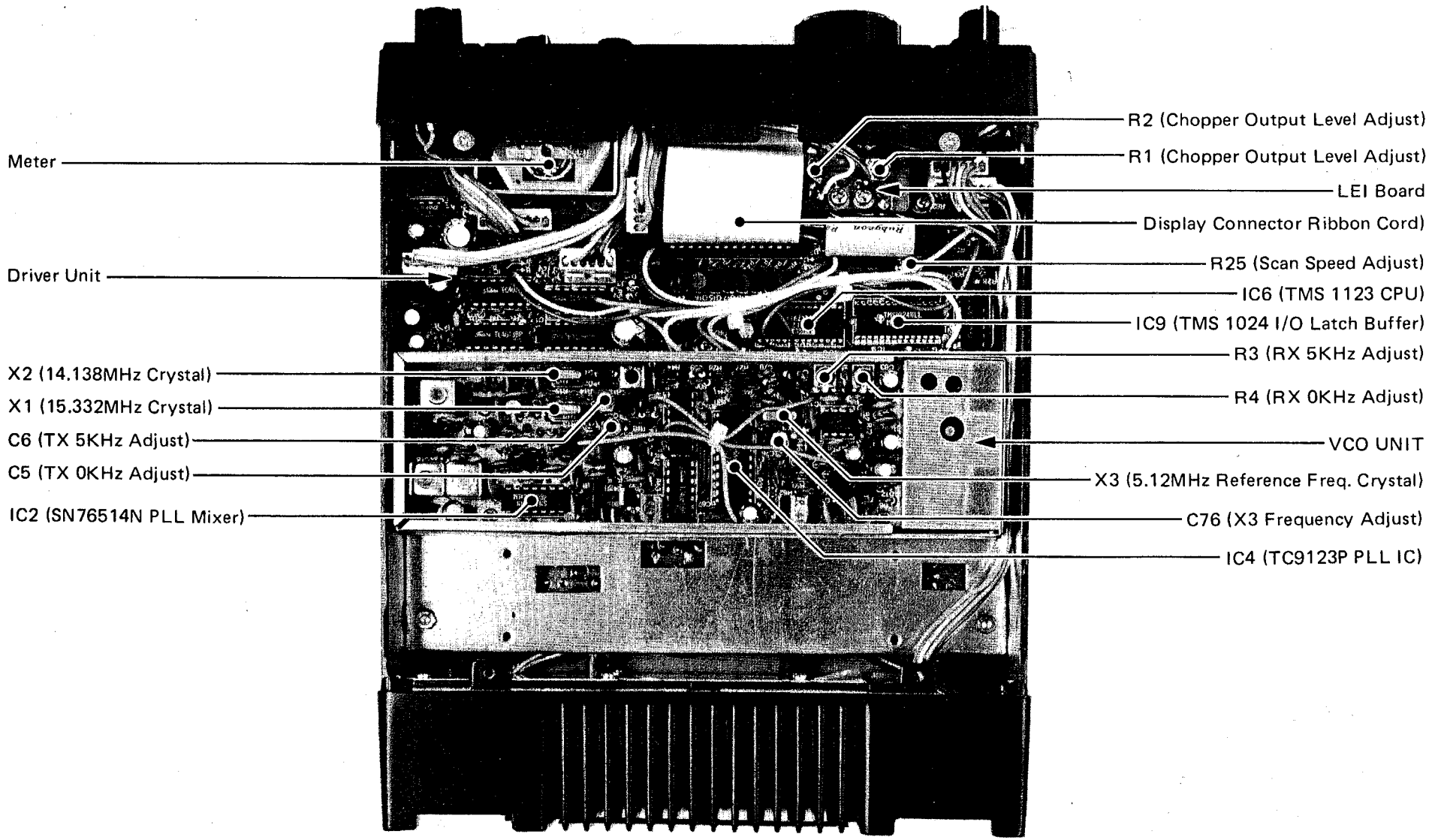
**UNIT LAYOUT**

EF UNIT  
(DISPLAY BOARD)  
EF UNIT  
(LEI BOARD)  
DRIVER & PLL UNIT  
VCO UNIT



**ICOM INC**

DRIVER UNIT SIDE



Meter

Driver Unit

X2 (14.138MHz Crystal)

X1 (15.332MHz Crystal)

C6 (TX 5KHz Adjust)

C5 (TX 0KHz Adjust)

IC2 (SN76514N PLL Mixer)

R2 (Chopper Output Level Adjust)

R1 (Chopper Output Level Adjust)

LEI Board

Display Connector Ribbon Cord

R25 (Scan Speed Adjust)

IC6 (TMS 1123 CPU)

IC9 (TMS 1024 I/O Latch Buffer)

R3 (RX 5KHz Adjust)

R4 (RX 0KHz Adjust)

VCO UNIT

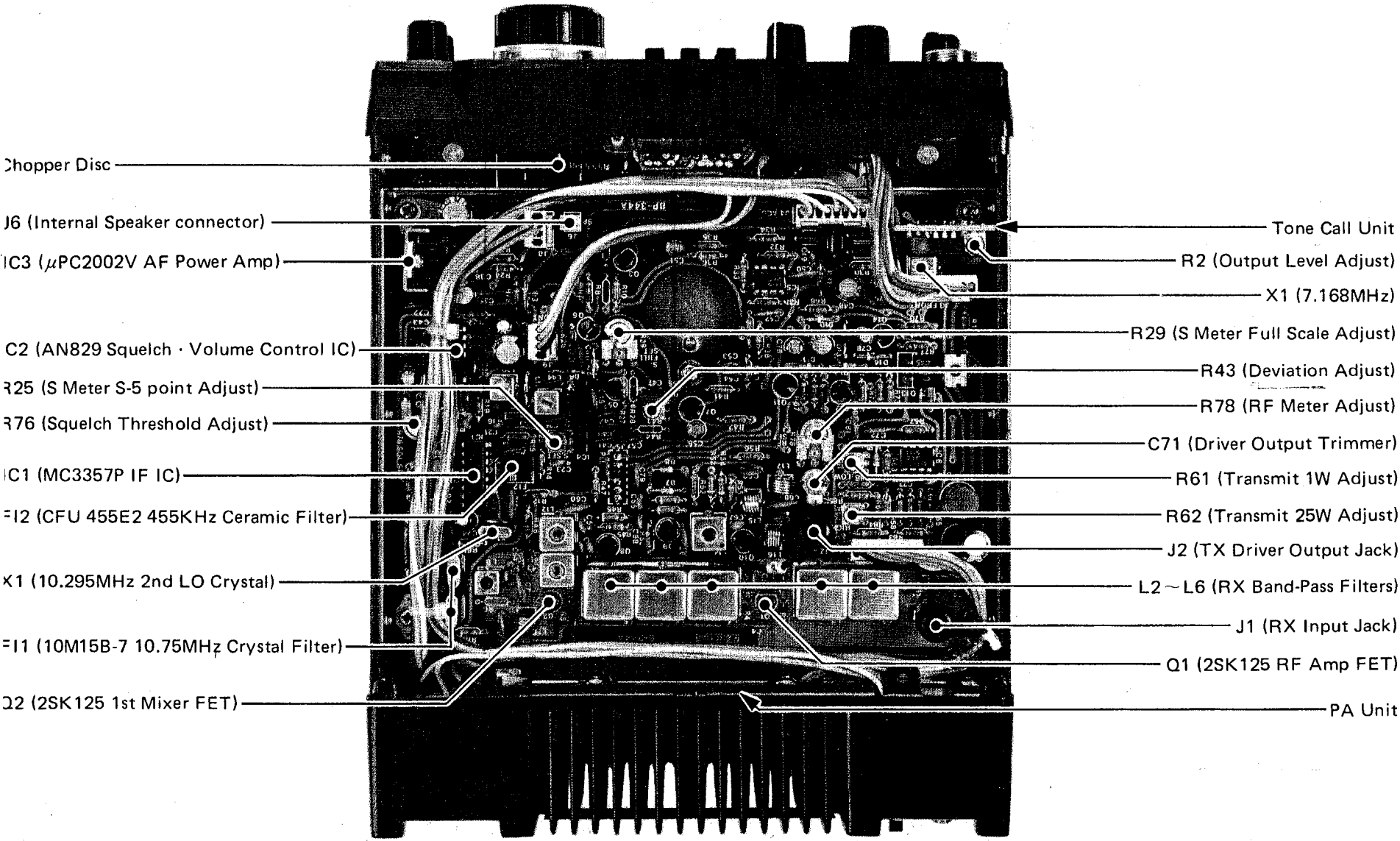
X3 (5.12MHz Reference Freq. Crystal)

C76 (X3 Frequency Adjust)

IC4 (TC9123P PLL IC)

SECTION VI INSIDE VIEW

MAIN UNIT SIDE



- Chopper Disc
- J6 (Internal Speaker connector)
- IC3 ( $\mu$ PC2002V AF Power Amp)
- C2 (AN829 Squelch · Volume Control IC)
- R25 (S Meter S-5 point Adjust)
- R76 (Squelch Threshold Adjust)
- IC1 (MC3357P IF IC)
- F12 (CFU 455E2 455KHz Ceramic Filter)
- X1 (10.295MHz 2nd LO Crystal)
- F11 (10M15B-7 10.75MHz Crystal Filter)
- Q2 (2SK125 1st Mixer FET)

- Tone Call Unit
- R2 (Output Level Adjust)
- X1 (7.168MHz)
- R29 (S Meter Full Scale Adjust)
- R43 (Deviation Adjust)
- R78 (RF Meter Adjust)
- C71 (Driver Output Trimmer)
- R61 (Transmit 1W Adjust)
- R62 (Transmit 25W Adjust)
- J2 (TX Driver Output Jack)
- L2 ~ L6 (RX Band-Pass Filters)
- J1 (RX Input Jack)
- Q1 (2SK125 RF Amp FET)
- PA Unit

SECTION X BLOCK DIAGRAM

