

# KENWOOD

Listen to the Future

## TM-D710A/E

Multi-communicator VHF/UHF FM Dual Bander

Getting Acquainted with APRS and EchoLink



## About this Manual

This document was created for the product having the following design specifications.

- TM-D710A/E, RC-D710, MCP-2A Version 3.10, 3rd party external GPS unit and Weather Station.
- TM-D710A/E and RC-D710 with firmware version 2.00.

## Software License Notice

- Users are required to obtain approval from Kenwood, in writing, prior to redistributing this document on a personal web page or via packet communication.
- Users are prohibited from assigning, renting, leasing or reselling the document.
- Users are prohibited from revising, changing, translating, merging, de-compiling or reverse engineering the software.
- Kenwood shall own all copyrights and other intellectual properties for the software and all manuals and documents attached to the software. The user shall be allowed to use, not to resell, the software by obtaining a license from Kenwood. While the media on which the software is stored is possessed by the user, the ownership of the software itself shall be reserved for Kenwood.
- Kenwood does not warrant that quality and functions described in this document comply with each user's purpose of use of this document and, unless specifically described in this document, Kenwood shall be free from any responsibility for any defects and indemnities for any damages or losses. The selection and introduction of the document, as well as the results therefrom, shall be solely a liability of the user.

## Firmware Copyrights

The title to and ownership of copyrights for firmware embedded in Kenwood product memories are reserved for Kenwood Corporation.

Any modifying, reverse engineering, copying, reproducing or disclosing on an Internet website of the firmware is strictly prohibited without prior written consent of Kenwood Corporation.

Furthermore, any reselling, assigning or transferring of the firmware is also strictly prohibited without embedding the firmware in Kenwood product memories.

## About Copyright

- Windows®2000, Windows®XP, Windows Vista™ and Windows logo are registered trademarks of Microsoft Corporation in the United States and other countries.
- .NET Framework is a registered trademark of Microsoft Corporation in the United States and other countries.
- NAVITRA® is a registered trademark of Kenwood Corporation.
- Kenwood is a licensed user of the APRS trademark and protocols from APRS Engineering, LLC.
- APRS® is a registered trademark of WB4APR (Bob Bruninga).
- TravelPlus for Repeaters™ is a registered trademark of American Radio Relay League, Inc.
- EchoLink® is a registered trademark of Synergenics, LLC.
- SmartBeaconing™ is a trademark of HamHUD Nichetronix, LLC.
- Dayton Hamvention® is a registered trademark of DARA Incorporation.
- Pentium® is a registered trademark of Intel Corporation.
- All other product names referenced herein are trademarks or registered trademarks of their respective manufacturers.

This page is intentionally left blank.

# CONTENTS

<b>1</b>	<b>DEVELOPMENT CONCEPT .....</b>	<b>1</b>	<b>5</b>	<b>APRS SOFTWARE FOR YOUR PC .....</b>	<b>16</b>
1.1	Strategy for the Design.....	1	5.1	UI-View.....	16
1.2	Evolving Development.....	2	5.1.1	Introduction to UI-View.....	16
1.3	Affinity with VoIP .....	2	5.1.2	Connecting a PC .....	17
<b>2</b>	<b>APRS OPERATIONS WRITTEN BY BOB BRUNINGA, WB4APR .....</b>	<b>3</b>	5.1.3	Creating a CMD File for TM-D710A/E .....	17
2.1	APRS Overview.....	3	5.2	Available APRS-related Software .....	18
2.1.1	History .....	3	<b>6</b>	<b>APRS IN ACTION .....</b>	<b>19</b>
2.1.2	Local Information Exchange .....	3	6.1	Let's Go Mobile .....	19
2.1.3	Mobile Information Resource.....	4	6.1.1	Summary .....	19
2.1.4	Situational Awareness .....	4	6.1.1.1	Automatic Reply Function	19
2.1.5	Participation .....	4	6.1.1.2	Voice Announcement Mode	19
2.2	Ubiquitous Operations.....	5	6.1.1.3	Entering Characters	19
2.3	APRS Global Internet System .....	5	6.1.2	Decay Algorithm Function .....	20
2.4	Kenwood Contributions .....	6	6.1.3	Proportional Pathing Function .....	20
2.5	APRS in the Field .....	7	6.1.4	Simultaneously using Decay Algorithm and Proportional Pathing.....	21
2.6	Other Data Entry Stations .....	8	6.1.5	SmartBeaconing (Written by Steve Bragg, KA9MVA).....	21
<b>3</b>	<b>PREPARATIONS FOR USING APRS .....</b>	<b>9</b>	6.1.5.1	Variable Rate Beaconing (Transmission Interval Changes with Speed).....	21
3.1	What Do I Need to Configure? .....	9	6.1.5.2	Corner Pegging (Transmission after Heading Change).....	23
3.2	Configuration .....	9	6.1.5.3	Operation Example.....	24
3.2.1	Built-in Clock.....	9	6.1.6	QSY Function .....	25
3.2.2	MY CALLSIGN .....	10	6.1.6.1	Transmitting QSY Information.....	25
3.2.3	BEACON TYPE .....	10	6.1.6.2	Receiving QSY Information.....	27
3.2.4	My Position .....	11	6.1.6.3	QSY Functions and EchoLink .....	27
3.2.4.1	Activating Your Mobile GPS Position .....	11	6.1.7	Message Function .....	27
3.2.4.2	Entering Your Position Manually .....	11	6.1.7.1	Automatic Reply Message.....	28
3.2.5	Setting the APRS Channel .....	12	6.1.7.2	Message Speech Synthesis.....	28
<b>4</b>	<b>GPS .....</b>	<b>13</b>	6.1.7.3	TX Beep (Beacon).....	28
4.1	What is GPS?.....	13	6.2	Base Station (Weather Station).....	29
4.1.1	Position Determination Principle.....	13	6.2.1	Using Meteorological Equipment....	29
4.1.2	Datum (Geodetic Survey System) .....	14	6.2.1.1	Davis Instruments Corp.....	29
4.1.2.1	GPS and APRS Position Format .....	14	6.2.1.2	Peet Bros. Company, Inc. ....	30
4.2	GPS Receivers.....	15	<b>7</b>	<b>APRS NETWORKS .....</b>	<b>31</b>
4.2.1	Garmin GPS18PC .....	15	7.1	Servers.....	31
4.2.2	AvMap G5.....	15	7.2	IGate .....	31
4.2.3	Other GPS Receivers .....	15	7.3	Let's Send Email .....	33
4.2.4	Settings for Geodetic Survey System.....	15	7.3.1	Sending Email with TM-D710A/E and RC-D710 .....	33

---

---

## CONTENTS

---

7.4	Digipeaters (Digital Repeaters).....	34	8.4.9	Firewalls .....	55
7.4.1	UIDIGI.....	34	8.4.9.1	Windows Firewall.....	55
7.4.2	UIFLOOD.....	35	8.4.9.2	Security Software Firewall.....	55
7.4.3	UITRACE.....	35	8.5	Setting Up a Node Station (Link Station) with TM-D710A/E.....	56
7.4.4	Configuration Examples (U.S.A.)... ..	36	8.5.1	Connecting a PC .....	56
7.4.5	Proper Configuration (written by Bob Bruninga, WB4APR).....	37	8.5.2	Configuring EchoLink Software for a Link Station.....	57
7.5	Packet Path.....	38	8.5.2.1	Finding your Position (Latitude/ Longitude Coordinates).....	64
7.5.1	New-N Paradigm .....	38	8.5.3	Configuring a TM-D710A/E for a Link Station .....	64
7.5.2	RELAY Paradigm.....	38	8.5.3.1	What is TM-D710A/E EchoLink Sysop Mode?.....	64
7.5.3	STATE/ SECTION/ REGION.....	38	8.5.4	Using MCP-2A to Configure TM-D710A/E.....	65
7.6	Using APRS and EchoLink Simultaneously.....	39	8.5.5	Checking your Link Station.....	67
7.6.1	Transmitting Node Information .....	39			
<b>8</b>	<b>ECHOLINK.....</b>	<b>40</b>	<b>9</b>	<b>MCP-2A MEMORY CONTROL PROGRAM (FOR USE WITH TM-V71A/E, TM-D710A/E, RC-D710).....</b>	<b>68</b>
8.1	What is EchoLink? .....	40	9.1	Downloading and Installing MCP-2A .....	68
8.2	EchoLink and the TM-D710A/E (written by Jonathan Taylor, K1RFD).....	41	9.2	Main Functions of MCP-2A.....	71
8.2.1	Sysop Mode.....	41	9.2.1	Main New Functions Added .....	71
8.2.2	Making the Connections .....	41	9.2.2	Useful Functions of MCP-2A.....	71
8.2.3	Transceiver Set-Up.....	41	9.2.3	Functions Only Configurable by MCP-2A.....	71
8.2.4	Audio Adjustment.....	42	9.3	Importing Other MCP Files into MCP-2A .....	72
8.2.5	COS versus VOX.....	42	9.4	Importing .hmk Files Created by Another MCP-2A.....	73
8.3	Using EchoLink only with Amateur Radio Equipment .....	43	9.5	Other Functions .....	74
8.3.1	Basic Commands used for EchoLink.....	45	9.5.1	Basic Functions .....	74
8.3.2	EchoLink Memory Function of TM-D710A/E.....	45	9.5.2	Memory Channels .....	74
8.3.2.1	Storing to an EchoLink Memory.....	45	9.5.2.1	Memory Channels .....	74
8.3.2.2	Transmitting with an EchoLink Memory.....	46	9.5.2.2	Weather/ Train Channels.....	74
8.4	Using EchoLink only with a Computer .....	47	9.5.2.3	EchoLink Memory Channels .....	74
8.4.1	Downloading EchoLink Software.....	47	9.5.3	Menu Settings .....	75
8.4.2	Installing EchoLink Software.....	48	9.5.3.1	Transceiver Menu > EchoLink RX Monitor.....	75
8.4.3	Starting EchoLink Software .....	48	9.5.3.2	Transceiver Menu > Repeater Mode (K-type only) .....	75
8.4.4	Validation of EchoLink User's Callsign .....	50	9.5.3.3	Transceiver Menu > Password .....	75
8.4.4.1	Scan and Upload .....	52	9.5.3.4	Transceiver Menu > 10MHz Mode .....	75
8.4.4.2	Fax.....	52	9.5.3.5	Transceiver Menu > TM-D710A/E.....	75
8.4.5	Startup in Single User Mode.....	52	9.5.3.6	Transceiver Menu > RC-D710 ....	75
8.4.6	Setting Audio Levels.....	53			
8.4.6.1	Adjusting Receive Volume .....	54			
8.4.6.2	Adjusting Transmit Level .....	54			
8.4.7	Connecting with a Station .....	55			
8.4.8	Port Forwarding (Router Configuration) .....	55			

9.5.3.7 Transceiver Menu > Variable Level of Data Terminal..... 75

9.5.3.8 Transceiver Menu > SQC Output Logic..... 75

9.5.4 Unique Functions.....76

9.5.4.1 Importing TravelPlus for Repeaters Files ..... 76

9.5.4.2 Importing .hmk Files..... 76

9.5.4.3 Exporting .hmk Files..... 76

9.5.4.4 Exporting .html Files..... 76

9.5.4.5 Splash Window..... 76

9.5.5 Useful Functions.....77

9.5.5.1 Verifying Firmware Versions ..... 77

9.5.5.2 Increasing Size of Characters..... 77

9.5.5.3 Configuring the Names for PM or Memory Groups..... 77

9.5.5.4 Configuring User Names with MCP-2A..... 77

9.5.5.5 Configuring How Memory Channels Display..... 77

9.5.5.6 Memory Channel Shortcut ..... 78

9.5.5.7 COM Port Shortcut..... 78

11.2 Adjusting Input and Output Levels..... 84

11.2.1 How to Configure Input/Output Levels of RC-D710..... 84

11.3 Schematic Diagram of the Optional PG-5J Interface Kit..... 85

11.4 AvMap (written by Don Arnold, W6GPS)..... 85

**12 APPENDIX..... 88**

**10 HOW TO UPDATE FIRMWARE .... 79**

10.1 Firmware ..... 79

10.2 Verifying Necessary Equipment .... 79

10.3 How to Verify Firmware Version.... 80

10.3.1 Checking the Transceiver Operation Panel .....80

10.3.2 Checking with MCP-2A.....80

10.3.3 Firmware Update for SmartBeaconing and Other Enhancements.....81

10.4 How to Get Newest Firmware/ Software ..... 81

10.5 How to Update..... 81

**11 MISCELLANEOUS TOPICS..... 82**

11.1 RC-D710 (Operation Panel / APRS-ready Standalone TNC)..... 82

11.1.1 Models Supported for use with RC-D710..... 82

11.1.1.1 Connection Example 1: Connecting RC-D710 to TM-V7A/E..... 82

11.1.1.2 Connection Example 2: Connecting RC-D710 to TM-D700A/E, TM-V708A ..... 83

11.1.1.3 DATA Terminal Pins (PG-5J).... 83

This page is intentionally left blank.



# PROLOGUE

## Amateurs Building the New Global Communications Network

Hams have enjoyed using FM transceivers for years for SSTV, ATV, packet, satellite, EME, GPS and other communications modes. A fundamental reason for this has been that FM transceivers are easy to use. Recently, personal computers and the Internet have combined to offer global communications opportunities. Yet, with their long history of communicating using various methods, nobody is better prepared than hams to embrace and take advantage of these new communications techniques to create an even more interesting new global network.

No longer are users of FM transceivers bound by line-of-sight distances and local same-city coverage. The Internet now shrinks the vast distances to other operators who were once out of reach by using only an FM transceiver. People now meet, experiment and interact worldwide via voice and data communications using low-power FM transceivers. These networks built by individual hams connecting through gateways into the Internet are allowing others to share the experience that this infrastructure offers.

And the networks are growing in size day-by-day. Hams are using basic FM transceivers to communicate on a direct one-on-one basis with operators across the globe. Besides hobby applications, such a communications network also has tremendous capability to deliver a powerful tool to serve the general public in times of emergencies.

## APRS Action

Complementing these voice and data activities is the Automatic Packet Reporting System, commonly called APRS. Mr. Bob Bruninga WB4APR created APRS back in 1992. Since those days of first meeting with Bob, Kenwood married radio and GPS technology and our company developed APRS products over the years.

In the beginning, the TM-V7A/E was popular for use with APRS because the transceiver supported data communications on a separate band from voice communications. But the Internet, personal computers and electronic mapping technologies were all in their infancies compared to now. It has taken a great deal of research for us to create the current TM-D710A/E and the environment has changed over the years. Besides the basic technology maturing, it is now possible to use EchoLink over VoIP. This means you can plot stations from the other side of the planet on a map while sending mail and communicating with them by voice. These are exciting new activities that didn't exist in 1992.

## **New Technology Expands Amateur Radio Versatility**

Using HF radio to call CQ and contact hams around the world will never lose its appeal. But there is elegance in being able to communicate with only an FM transceiver and by adopting the latest technology. The global network will only get more interesting as it evolves with new ideas as a result of those like you becoming involved. Already, APRS plots locations of amateur radio satellites and presents weather information such as hurricane data on screen. APRS accurately tracks your traveling amateur radio friends. You can send email directly to them or take advantage of EchoLink node numbers to make direct voice contact. Combining the different technologies will add to your communications versatility and make you a part of the communicating world.

# 1 DEVELOPMENT CONCEPT

The concept of developing the TM-V71A/E, TM-D710A/E and RC-D710 is as stated below.

- To have common functionality between the basic model (TM-V71A/E) and the multi-function model (TM-D710A/E) transceivers.
- To add the capability for customers themselves to be able to update the version of APRS on their own.
- To create an affinity with VoIP systems.

In order to understand customer requirements, we did surveys at various ham shows, such as the Dayton Hamvention, ARRL and TAPR Digital Communications Conference (DCC), JARL Ham Fair (Japan), Ham Radio in Friedrichshafen (Germany), etc., and analyzed our customers' needs. The many ideas gathered coalesced into the development concept above as the Product Planning group and Development group virtually merged during the conception phase to come up with the present development program.

## 1.1 Strategy for the Design

First, we looked back at the makeup of the earlier TM-D700 model series. The TM-D700 series has built-in TNC modems in the transceivers themselves for packet communication. The embedded microcomputer supports not only amateur radio functions, but also data communication application programs such as APRS.

After the multi-function TM-D700 model was marketed, we eliminated hardware parts related to packet communication and introduced the TM-V708 as a standard model. From the beginning, this model was developed as a multi-functional model; therefore, it was easy to update the design. However, it was difficult to cut costs while developing the standard model.

This time there was a plan to develop two types: a standard model and a multi-functional model. We discussed which type we should develop first, and slowly the following plan evolved:

1. First, develop the standard model.
2. Next, create a multi-functional model only by switching the front panel.
3. Lastly, develop a standalone front panel.

Nobody could imagine how this development would proceed, especially to progress from Step 2 to Step 3.

On the basis of sharing functions between the multi-function model and the standard model transceiver, the research to combine the TNC modem and APRS application program all in the front panel was completed.

At this stage, our goal to have a TNC with APRS functionality was realized. We merchandised the standalone front panel with the underlying concept of allowing existing Kenwood customers to enjoy the benefits of APRS.

## 1.2 Evolving Development

In order to develop an APRS model following the TM-D700 series, we discussed face-to-face directly with Mr. Bob Bruninga, developer of APRS, an operation specification to better implement the flexibility of the APRS protocol. We were going to “kick it up a notch” and make APRS still more powerful.

We enhanced capability with several new important APRS functions on top of the basic functions of the TM-D700 series:

- Added the capability to connect to weather observation devices and send weather information.
- Substantially increased the number of stations in the station list and message list.
- Included various sorting functions for finding information in the station list.
- Developed a proportional pathing function that reduced on-air traffic loading.
- Introduced a menu-configurable Digipeat function.
- Added the voice frequency to outgoing packets.
- Added display of the voice frequency on incoming packets.

The lists of ideas generated from these meetings were endless. In the future, we will endeavor to develop more new features and turn the ideas into reality via version upgrades.

## 1.3 Affinity with VoIP

We closely studied EchoLink since this system has the greatest number of amateur radio operator users of any VoIP system currently in use. Our studies indicated that a mobile station was the most convenient method for access to the EchoLink system. Also, the concept of a fixed node number per each station using the EchoLink system was fundamental.

In order to connect the amateur radio equipment to a computer more simply, we re-developed the interface cable, too. This interface improvement made the system more robust.

The merging of APRS and VoIP has great potential for the future of ham radio. The APRS network knows where everyone is by callsign. The EchoLink network knows how to connect distant FM transceiver users via VoIP. Future merging of these technologies should be able to allow end-to-end voice links anywhere on earth by a simple APRS message request by callsign alone. Think of it as ham radio’s cell phone system.

We believe the TM-V71A/E, TM-D710A/E and RC-D710 give the potential to the amateur radio community to evolve into this future network.

## 2.1 APRS Overview

### 2.1.1 History

APRS was developed beginning back in the 1980s by Bob Bruninga, WB4APR, as a real-time local tactical communications system for rapidly exchanging digital data of immediate value to local operations. This really took off when GPS became available and MAPS were integrated into the system for tactical situational awareness of everything in the net. Unfortunately, in the 13 years since GPS became readily available to most operators and was added to APRS to facilitate the display of the local network, too many follow-on applications have focused too heavily on the vehicle tracking function at the expense of many of the more valuable functions of APRS for human-to-human ham radio information exchange in real time.

As a result, too many operators appear to misunderstand some of the basic tenets of APRS. APRS is not a vehicle tracking system. The Automatic Packet Reporting system is simply a local data channel designed to share everything that is going on in ham radio in real time. This channel was designed to support rapid, reliable exchange of information for local, tactical real-time information, events or nets. The concept, which dates back to the mid 1980s, was to provide a single information resource channel where everything happening could be beamed and where anyone could monitor to find out what was going on across all aspects of ham radio interests.

### 2.1.2 Local Information Exchange

A fundamental principal was that all relevant information is transmitted immediately to everyone in the net and every station captures that information for consistent and standard display to all participants. Information was refreshed redundantly but at a decaying rate so that new information was rapidly disseminated but old information was updated less frequently than new info. Since the primary objective is consistent exchange of information between everyone, APRS established standard formats not only for the transmission of POSITION, STATUS, MESSAGES, and QUERIES, it also establishes guidelines for display so that users of different systems would still see the same consistent information displayed in a consistent manner (independent of the particular display or mapping system in use).

To emphasize the freshness and importance of local information over the sometimes interference of older and more distant data, the new TM-D710A/E implements both the decay algorithm and also the new proportional pathing algorithms.

**THE GOAL IS COMMUNICATIONS and LOCAL INFO UPDATE, -NOT- JUST VEHICLE TRACKING!**

### 2.1.3 Mobile Information Resource

APRS was never intended to be just a vehicle tracking system (GPS was added in the 1992 time frame when GPS became affordable). APRS is much more. See the Kenwood mobile display below. This is the STATION LIST which shows the nearest 100 stations heard. In this case, not only are the two stations of AB9FX nearby, but also his current voice operating frequency is visible. Also, we can see that this transceiver is in operating range of three voice repeaters that are also identifying themselves as objects on APRS as the locally recommended voice operating channels.



Figure 2-1 TM-D710A/E Front Panel showing Station List

### 2.1.4 Situational Awareness

APRS provides situational awareness to all operators of everything that is going on in his local area, whether it is weather reporting, traveler info, direction finding, objects pointing to EchoLink and IRLP, or traffic reporting and emergency response. All of this while providing not only instantaneous operator-to-operator keyboard messaging capability for special events, but also an always-on Voice Alert backchannel between mobiles in simplex range. There is even an APRS interface to the Winlink system called APRSLink so that mobiles can send and receive email without needing a PC. Think of APRS as a signaling channel to reveal all amateur radio resources and live activities that are in range of the operator at any instant in time.

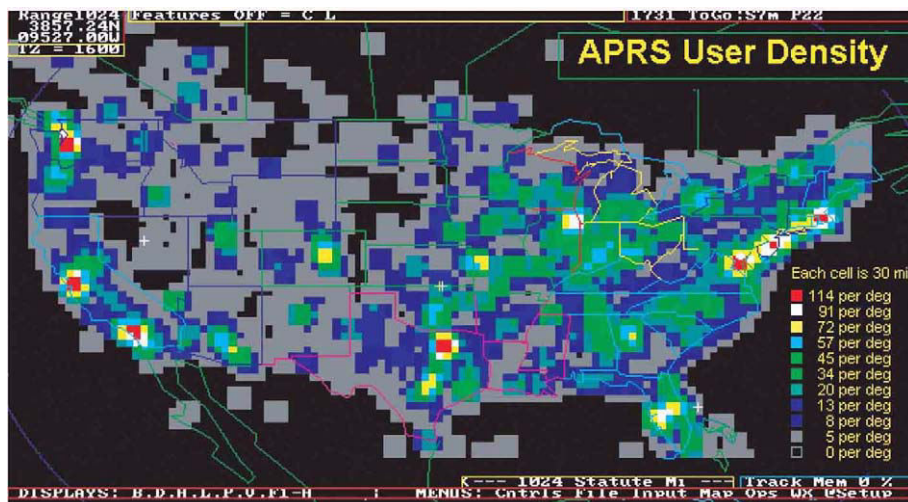
### 2.1.5 Participation

Although APRS offers phenomenal capabilities for managing and displaying local information, an overarching design assumption was that in most applications, APRS would not be used by most operators at an event or by every member of a club, and very few devices could actually report their own position. The design assumption was that manual entry and management of large numbers of objects would be a major function of APRS and APRS operators in order to fully represent the situation. Further, Bulletins and Announcements would keep everyone informed of the same information at the same time. Operator Messages would communicate important information in the background without encumbering voice nets.

## 2.2 Ubiquitous Operations

Consistent with providing information on all resources within range, APRS must also work across all boundaries and in all areas of the continent for all travelers. For this reason, 144.39 MHz is dedicated to APRS throughout North America. Other continents have similar single frequencies such as 144.80 MHz in Europe and 145.175 MHz in Australia. Also, after 14 years of evolution, APRS was greatly simplified beginning in the 2004 time frame to eliminate obsolete and inefficient routing. See the New-N Paradigm.

Now, there is only one recommended PATH everywhere, and it is VIA WIDEn-N for fixed stations where N is usually 2 in most metropolitan areas and no more than 3 in very remote or isolated areas far from cities. Mobiles can use a path VIA WIDE1-1,WIDE2-1 in those 2-hop areas to gain help from nearby WIDE1-1 fill-in digipeaters. See the high density areas in the map below:



This data from Steve Dimse's FINDU is plotted on APRSdos to show the user density in the USA in February 05. Although it appears that most of the USA is low density, remember that a WIDE5-5 launched anywhere in the remotest area will still get to the cities and add to the QRM there. And there are 100 times more low density users surrounding these cities on all sides that really adds up to heavy QRM. We recommend WIDE2-2 in the 8 per degree or more and surrounding areas. 3-3 should be used only in the 5 per degree or less areas. The grid size is 30 miles and each is averaged with all 8 of its surrounding adjacent grids. The file is over 11,000 stations.

But the great news is that the New n-N Paradigm is the right approach. It encourages WIDEn-N everywhere while letting the high density areas trap large values of N to prevent overload in their areas only.

Figure 2-2 APRS User Density

## 2.3 APRS Global Internet System

Although APRS is a local, tactical real-time two-way communications system, the enormous free bandwidth of the Internet was added in the mid 1990s to allow global monitoring of all real-time data from all local communities around the world. Everything on any APRS frequency is being monitored locally and fed globally into the APRS internet system by hundreds of IGates. See live list (complete) or a Map of I-G symbols.

Not only does this allow for global monitoring of any local activity, it also allows two-way point-to-point messaging between any two APRS users anywhere on the planet (that has an APRS infrastructure). Think of it as everything goes in, so it is available to everyone, but the only things that come from the Internet back to local RF are messages and selected position data requested locally.

## 2.4 Kenwood Contributions

Kenwood has developed its series of transceivers, the TH-D7A/E, TM-D700A/E and TM-D710A/E to best support the original objectives of APRS. The display of APRS information on the front panel of these transceivers gives the mobile operator instantaneous access to all local information being provided on the APRS channel about all surrounding ham radio activities.

There are many APRS clients and programs that have been written that sometimes have concentrated too much on the display of maps and vehicle positions while leaving out much of the original fundamentals of APRS and the efficiency of the APRS network in support of two-way local area communications. The Kenwood transceivers have avoided that simplistic approach to APRS by implementing a rich and full feature set that includes most of the original APRS features that enhance this local information distribution concept. The Kenwood transceivers are not just Vehicle Tracking Systems, but are designed to be Real-Time Information Distribution Systems for mobile operators with these features:

- **Position Entry:** The transceivers are not dependent on GPS for their value since manual position entry and 5 common positions can be saved.
- **Map Displays on attached GPS:** Although these transceivers provide Map plotting via attached NMEA GPS units with map displays, the radios are fully functional without maps and can display on their front panel all aspects of bulletins, messages, weather, as well as information on the direction and distance to others including their antenna heights and gain.
- **APRS Network Fundamentals:** Kenwood fully implemented the more subtle aspects of the APRS fundamentals that assure optimum network efficiency and channel sharing among all users. The new TM-D710A/E transceiver supports the decay algorithms and proportional pathing. These two techniques provide good refresh rates for new and local information while minimizing the network impact of old and distant data.
- **Objects:** The Kenwood transceivers fully appreciate the value of APRS objects and display them prominently. The object location is shown just like other stations either on the attached map display or on the front panel with distance and range. These objects are what give APRS the local information value to local users.
- **Two-Way Messaging:** Unlike passive one-way tracking devices, the Kenwood transceivers provide the mobile user with full two-way messaging and display. This real-time human-to-human communications is what makes APRS so valuable in support of special events and emergencies.
- **Field Data Entry:** Although the Kenwood transceivers are excellent field data display devices, their menus have also been designed for easy data, position and message entry. Often overlooked is the ability to use a number of TH-D7A/E or even TM-D700A/E transceivers as excellent field data entry and clipboard entry devices at many field events. See <http://www.ew.usna.edu/~bruninga/aprsevent.html>.
- **Individual Information Access:** The Kenwood individual radio displays enhance the distribution of ham radio information to a large number of users by giving them individual front panel and key pad access to all of the online APRS data. A common mistake of fixed operations with computers is the use of large display screens for large groups to see but which fails to recognize that each individual viewer actually needs access to the keyboard to truly access the individual APRS information he may need at any instant. The individuality of APRS radios with individual displays spreads this data access throughout the field.
- **Overlay Characters on all Symbols:** Although the Kenwood transceivers have always displayed the overlay character of a subset of APRS symbols, the new TM-D710A/E has vastly expanded the APRS symbol set by not only adding additional symbols, but more importantly displaying and allowing the addition of an Overlay character on almost all APRS symbols. This provides hundreds of new symbol combinations for better APRS application to new uses.



- **Mobile Digipeating:** The new TM-D710A/E Kenwood mobile has additional features to help local sysops manage the local APRS network. Each transceiver now has front panel access to the digipeater function so that it can be turned on and off as needed to match the local situation. In addition, each TM-D710A/E is pre-configured to serve automatically as a TEMPn-N digipeater in support of emergency operations when a user is having difficulty accessing the existing WIDEn-N network.
- **Voice Operating Frequencies:** The most important new feature of the new TM-D710A/E transceiver is the recognition of the value of operator frequency as a fundamental local communications parameter. Not only does the transceiver automatically include its own operator frequency in every position packet, it also has a new display column to display that information as it is collected from other similar operators. Further, the transceiver can tune to these frequencies for a quick QSO with a single press of the TUNE Button.
- **EchoLink, IRLP and WinLink Frequencies:** In addition to all other stations, information and objects, the new TM-D710A/E can automatically tune to nearby EchoLink, IRLP or WinLink frequencies with the push of a single button. If the packets for these local objects contain the frequency of these nodes, then the TM-D710A/E TUNE button will QSY instantly if needed.
- **Voice Alert:** Voice alert is like a 3rd simultaneous radio channel on the Kenwood APRS transceivers. It acts like an intercom channel for all APRS operators to be able to quickly raise another nearby APRS voice alert station by a simple direct voice call. Although this “3rd” intercom channel appears to be independent of the data channel and voice channel, it is simply the sharing of the data channel for data and seldomly-made voice calls by separating them with CTCSS tones. All network data on the APRS channel is transmitted without CTCSS tones, and so the TONE squelch can be used to silence the speaker of all packet noise, yet still provide a voice simplex calling channel between APRS operators if needed. The APRS CTCSS tone is 100 Hz. Refer to section 6.1.6.2 Receiving QSY Information.

## 2.5 APRS in the Field

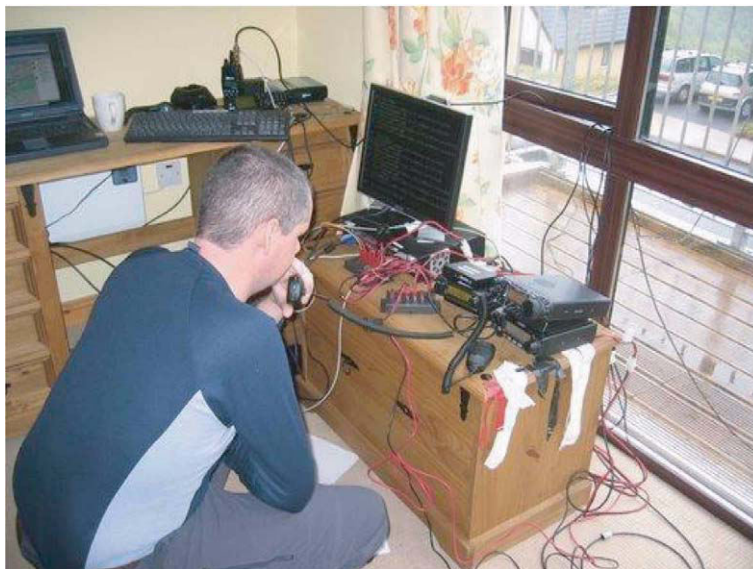
The photo below shows the typical APRS set up in the field at an event. This station can be used to not only show other personnel at the checkpoint the tactical situation, but it keeps the APRS operator at this site informed.



Figure 2-3 Field Setup for APRS

## 2.6 Other Data Entry Stations

But we should not lose sight of the home station that can also be used as a great information resource. The next photo shows a station that was set up in a motel room and the operators there could monitor all of the activities on the various nets and enter this situational information into their APRS PCs. All of this data would show everywhere on APRS. AND, through the miracle of wireless (ham radio), they do not have to be at the site. They can be anywhere convenient, just monitoring, and managing the data.



**Figure 2-4 APRS at Home or any Fixed Location**

**REMEMBER:** If you are not using the full potential of APRS, it is not the fault of the protocol or the hardware. APRS is a communication tool, not just an automated map....use it. But in most cases, that means ENTERING DATA, not just watching it.

# 3 PREPARATIONS FOR USING APRS

## 3.1 What Do I Need to Configure?

The following need to be configured before beginning to operate TM-D710A/E or RC-D710 with APRS.

- **Built-in Clock**  
APRS data will be stamped with date and time, therefore the built-in clock must be set.
- **MY CALLSIGN**  
The station configured for MY CALLSIGN will be used as the originating station when APRS data is sent. You cannot send any data using NOCALL.
- **BEACON TYPE**  
Use BEACON TYPE to select APRS data format for sending.
- **Position**  
Your station's position is added to APRS data, therefore you must configure your latitude and longitude. You can get your own position also from GPS.
- **Frequency**  
The operating frequency will depend in what region of the world you are operating. You can begin operating using the frequency configured for the data band as follows:  
North America: 144.390 MHz, Europe: 144.800 MHz, Australia: 145.175 MHz,  
New Zealand: 144.575 MHz, Argentina: 144.930 MHz, Brazil: 145.570 MHz, Japan: 144.640 MHz

## 3.2 Configuration

Follow the explanations below to configure each item listed in the previous section.

### 3.2.1 Built-in Clock

Select Menu 524 (AUX - DATE) and configure the date.

- K-type (U.S.A. and Canada): Set month, date, year in this order.
- E-type (Europe): Set date, month, year in this order.

**Note:** If using RC-D710, then set month, date, year regardless in which region you are located.

#### **Example:**

Configure the date May 16, 2008 (K-type). Refer to Figure 3-1.

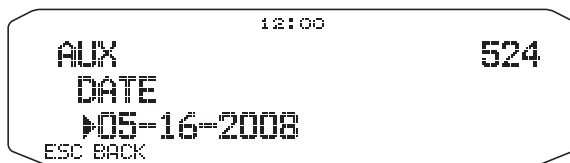
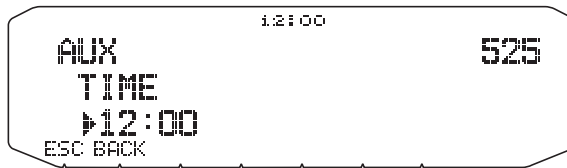


Figure 3-1 Menu 524 (AUX - DATE)

Select Menu 525 (AUX - TIME) and configure the current time.

**Example:**

Configure the time 12:00. Refer to Figure 3-2.



**Figure 3-2 Menu 525 (AUX - TIME)**

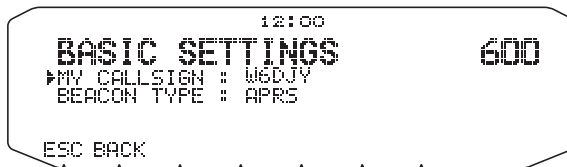
Select Menu 526 (AUX - TIME ZONE) and configure your time zone.

### 3.2.2 MY CALLSIGN

Select Menu 600 (APRS - BASIC SETTINGS - MY CALLSIGN) and configure your own callsign.

**Example:**

Register the callsign W6DJY. Refer to Figure 3-3.



**Figure 3-3 Menu 600 (MY CALLSIGN)**

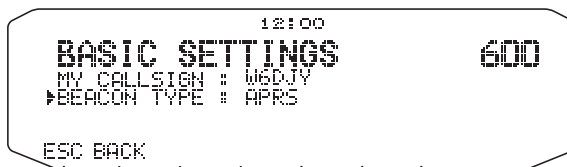
### 3.2.3 BEACON TYPE

Select Menu 600 (APRS - BASIC SETTINGS - BEACON TYPE) and configure the beacon type. Select APRS format to send APRS.

**Note:** Weather information and messages will be sent by APRS format regardless of beacon type setting.

**Example:**

Configure the beacon type as APRS. Refer to Figure 3-4.



**Figure 3-4 Menu 600 (BEACON TYPE)**

## 3.2.4 My Position

### 3.2.4.1 Activating Your Mobile GPS Position

Select Menu 602 (APRS - GPS PORT) and configure the GPS terminal settings.

- Baud Rate: 4800 bps (same as GPS receiver)
- Input: GPS (for the GPS receiver)
- Output: OFF (when WAYPOINT, DGPS are not used)

```

12:00
GPS PORT 602
BAUD RATE : 4800 bps
INPUT : GPS
OUTPUT : OFF
ESC BACK

```

Figure 3-5 Menu 602 (GPS PORT) with GPS Receiver

### 3.2.4.2 Entering Your Position Manually

Select Menu 602 (APRS - GPS PORT) and configure the GPS terminal settings.

- Input: OFF

```

12:00
GPS PORT 602
BAUD RATE : 4800 bps
INPUT : OFF
OUTPUT : OFF
ESC BACK

```

Figure 3-6 Menu 602 (GPS PORT) without GPS Receiver

Select Menu 605 (APRS - MY POSITION) and configure your own station's position.

- Name: Enter a familiar name for your location (HOME or etc.).
- Latitude: Enter the latitude value.
- Longitude: Enter the longitude value.

#### Example:

Configure a latitude of N 39° 49.31' and a longitude of W 84° 15.39'. Refer to Figure 3-7.

```

12:00
MY POSITION 605
#1 NAME : HOME
LATITUDE : N 39° 49.31'
LONGITUDE : W 84° 15.39'
EM79UT
ESC BACK USE

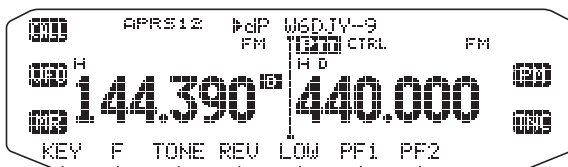
```

Figure 3-7 Menu 605 (MY POSITION)

### 3.2.5 Setting the APRS Channel

**Example:**

Configure a frequency of 144.390 MHz. Refer to Figure 3-8.



**Figure 3-8 Operating Frequency**

## 4.1 What is GPS?

GPS, standing for Global Positioning System, is becoming common nowadays. Following is a brief introduction.

The American Defense Department developed GPS originally for military operations. The system is available for use by the general public. For example, anybody can use GPS in association with modern vehicle navigation systems. Position precision for public use is approximately 15 m. Moreover, precision can be improved when used for vehicle navigation and aboard ships through use of map matching technology and differential GPS techniques.

A total of 24 GPS or more satellites are at a high-level altitude of approximately 20,000 km on six circular tracks with orbital radii of approximately 26,000 km. Therefore, there are four or more satellites located in each orbital track. For civilian use, the RF carrier frequency of the satellites is 1575.42 MHz. Spread spectrum (SS) technology is used over a bandwidth of 2.046 MHz to prevent interference among all the satellite signals on a common carrier frequency. Due care must be taken when installing amateur radio equipment and antennas for use on the 430 MHz or 1200 MHz bands to prevent from interfering with GPS signals.



Figure 4-1 GPS IIR Satellite in Orbit

### 4.1.1 Position Determination Principle

The GPS receiver receives the radio signals transmitted from the GPS satellites. The receiver measures the time duration between when the signal leaves the satellite and when the signal arrives at the GPS receiver. Knowing this time allows calculation of the distance that the signal traveled from that particular satellite. By receiving multiple signals from different satellites and doing this distance calculation multiple times, the intersection of the spherical surfaces that represent the respective radius distances to the various satellites will determine a single point. The precision of the determination of the intersecting point relies on the satellites and the data collected.

## 4.1.2 Datum (Geodetic Survey System)

The latitude and longitude information required by the GPS receiver does not allow for accurate representation of the unevenness of the Earth's surface. For use with GPS, the current standard that defines the precise shape of the Earth is called WGS-84. By using this standard in conjunction with mapping standards for each country, accurate position plotting on a map can be done.

### 4.1.2.1 GPS and APRS Position Format

Although position can be described in many different formats, such as degrees, degrees and minutes, and degrees, minutes and seconds, the GPS system and APRS have standardized on the degrees and decimal minutes format. Just like it is important to use proper international phonetics when spelling on the air, it is important in APRS as in any communications system to have a default standard for position. All operators should be trained to use the DDD MM.mm format by default in voice communications just like in the data formats. Using these standards on the air will prevent communications errors, confusion, repeats, and conversions.

#### APRS Standard:

Geographic Coordinates	Format	Example
Latitude	DD MM.mm (degrees and minutes)	39 49.31N +39 49.31
Longitude	DDD MM.mm (degrees and minutes)	84 15.39W -84 15.39



## 4.2 GPS Receivers

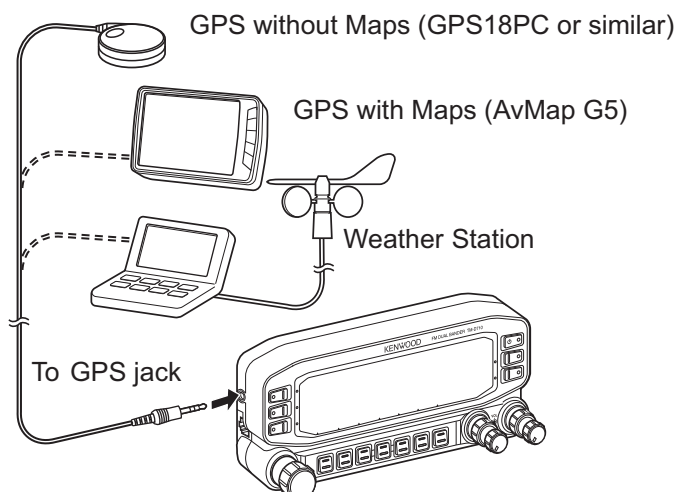


Figure 4-2 GPS Receivers

### 4.2.1 Garmin GPS18PC

The GPS18PC is a GPS module receiver that interfaces via a 9-pin D-SUB RS-232C serial port. Refer to the wiring example using an accessory cable (2.5mm 3-conductor plug) that comes with the TM-D710A/E. Power is sourced from the 12VDC supplied from a vehicle cigarette lighter socket. Because there is no screen, you cannot use the Waypoint function.

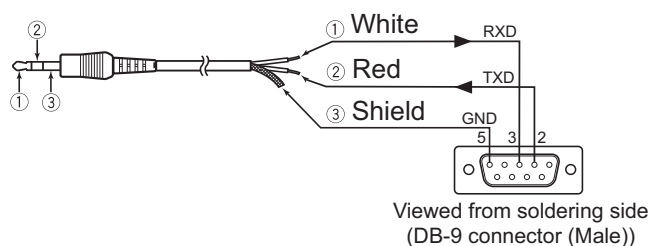


Figure 4-3 Garmin GPS18PC

### 4.2.2 AvMap G5

The AvMap G5 comes with a Kenwood-ready cable and exclusive APRS interface built right into the panel. You can watch APRS activity on the AvMap G5 screen without having a PC. It can be also configured to navigate to your favorite APRS station.

### 4.2.3 Other GPS Receivers

The GPS receiver used must be based on NMEA 0183 format (<http://www.nmea.org>). The following RS-232C signal levels are allowed for using the TM-D710A/E and RC-D710. Low level: - 15 V to 0.5 V, High level: +3.0 V to +15 V. You cannot use a GPS receiver with USB-type connector.

### 4.2.4 Settings for Geodetic Survey System

For APRS, always configure the WGS-84 Geodetic Survey System for your GPS receiver.

# 5 APRS SOFTWARE FOR YOUR PC

## 5.1 UI-View

### 5.1.1 Introduction to UI-View

UI-View32 is APRS client software designed to allow a personal computer to display APRS stations on a map and to use various APRS functions such as Internet gateway access. So you can display on a map on your computer the APRS stations received by a TM-D710A/E and, in addition, connect to an Internet gateway. In doing so, APRS allows access to a much larger set of stations.

To start, you will require a UI-View32 registration number (Registration No.) and a certification number for the APRS server (Validation No.). Go to <http://www.ui-view.org/> to download the latest version of UI-View32 software, to register and to obtain detailed setting and usage information.

**Note:** The above URL link is subject to change. If the link is broken, search for “UI-View32” using your favorite Internet search engine to quickly locate the appropriate home page.

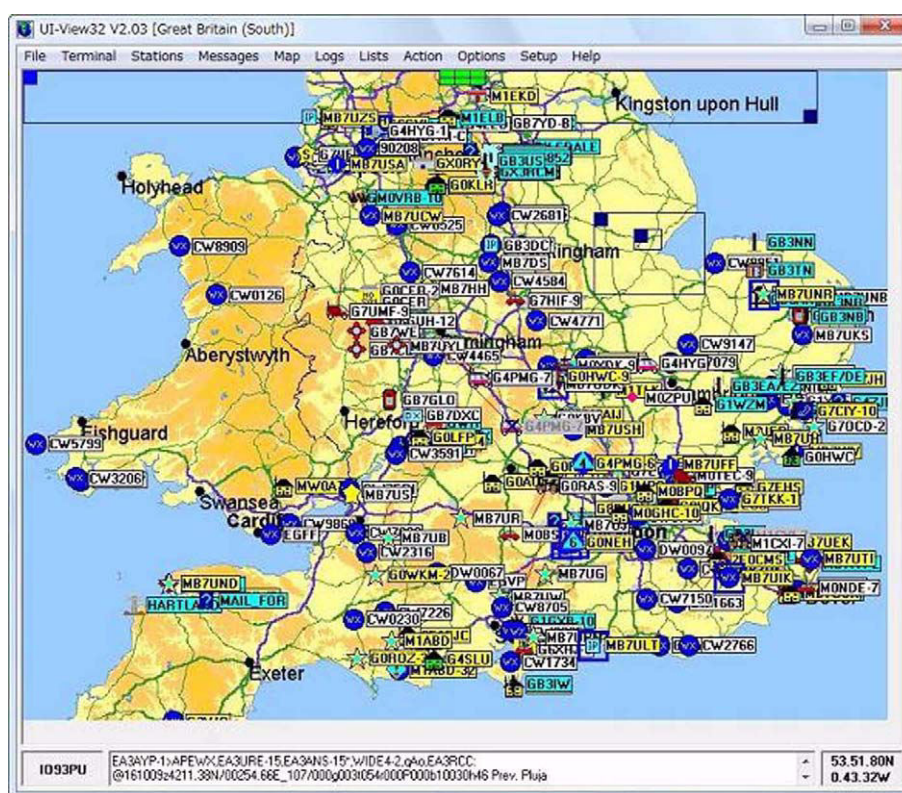


Figure 5-1 APRS Stations Display

## 5.1.2 Connecting a PC

Use the optional PG-5G programming cable to connect the COM port on the rear of the TM-D710A/E operation panel to the serial port on your personal computer.

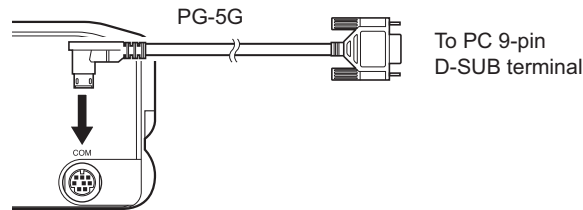


Figure 5-2

## 5.1.3 Creating a CMD File for TM-D710A/E

To use TM-D710A/E with UI-View32, you must create an initialization file. Look in the UI-View32 CMD folder and you will find an initialization file called TM-D700.CMD. This file was required to connect to the earlier TM-D700A/E transceiver. You need to edit this file as shown below and create a new file for the TM-D710A/E.

### TM-D710A/E Initialization File

```
;This is a sample TNC initialization file for use with
;the Kenwood TM-D710A/E.

[SETUP]
;DON'T alter anything in this section unless you are
;sure you know what you are doing!
COMMAND_PROMPT=cmd:
COMMAND_CHARACTER_CODE=3
ESCAPE_CHARACTER_CODE=
CONV_COMMAND=CONV
MYCALL_COMMAND="MYCALL "
UNPROTO_COMMAND="UNPROTO "
NO_BEACON_COMMAND=BEACON EVERY 0

[[INIT_COMMANDS]
^C^C^C
;Control mode on.
TC 1!TS 1
;Select TNC PKT mode on A band.
TN 2,0!TN 2,0
;Waiting for command prompt.
^M!cmd:!5
;Repeating the first two commands is not an error!
ECHO OFF
BEACON EVERY 0
ECHO OFF
BEACON EVERY 0
```

Save the newly created initialization file as TM-710.CMD in the CMD folder under UI-View32. You can then select "TM-710" as the TNC type in the Comms Setup screen of UI-View32 and start operating.

**Note:** TM-D700.CMD initialization file cannot be used for TM-D710A/E due to the incompatibility of the PC commands. Modify the TM-D700.CMD file using a text editor as above and save it as TM-D710.CMD.

## 5.2 Available APRS-related Software

The APRS program currently runs on a number of platforms. These programs are constantly being updated and can be downloaded from the Internet. Most programs are shareware and the latest versions are available at the TAPR (Tucson Amateur Packet Radio) FTP site: <ftp://ftp.tapr.org/aprssig>.

**APRSdos** (<ftp://ftp.tapr.org/aprssig/dosstuff/APRSdos>)

Written by Bob Bruninga, WB4APR, the Father of APRS  
Runs on MS-DOS.

**MacAPRS** (<ftp://ftp.tapr.org/aprssig/macstuff/MacAPRS>)

Written by Mark Sproul, KB2ICI and Keith Sproul, WU2Z  
Runs on Macintosh computers using Operating System 7 or higher.

**WinAPRS** (<ftp://ftp.tapr.org/aprssig/winstuff/WinAPRS>)

Written by Mark Sproul, KB2ICI and Keith Sproul, WU2Z  
Runs on Windows 95 or higher, or on Windows 3.1 + Win32s.

**javAPRS** (<ftp://ftp.tapr.org/aprssig/javastuff>)

Written by Steve Dimse, K4HG  
Runs on JAVA.

**APRSplus** (<ftp://ftp.tapr.org/aprssig/winstuff/APRSPLUS>)

Written by Brent Hildebrand, KH2Z  
Runs on Windows 95 or higher, or on Windows 3.1 + Win32s.

**UI-View** (<ftp://ftp.tapr.org/aprssig/winstuff/UI-View>)

Written by Roger Barker, G4IDE SK

**AGWTracker** (<http://www.agwtracker.com>)

Written by George Rossopulos, SV2AGW

**Note:** The above URL links are subject to change.

# 6 APRS IN ACTION

While monitoring APRS stations from around the world that may appear on your map, you can easily send messages to them. An interest is now growing in APRS QSOs where one station may call CQ looking for responses in the conventional style of a ham contact. Due to the number of characters being restricted, it can be customary to send short sentences using abbreviated words similar to operating CW.

Searching for weather information can reveal that even adjacent nearby areas can have dramatically differing weather patterns. Or operating outdoors and timing transmissions to coincide with overhead satellite passes can result in successful satellite communications using only a handheld transceiver. The opportunities for many activities exist even without installing a fixed station at home.

Below are two APRS operational examples. In the U.S.A. and Canada, the national APRS frequency is 144.390 MHz.

## 6.1 Let's Go Mobile

### 6.1.1 Summary

First, collect and place in your vehicle the essentials necessary for operating mobile. You will need a GPS receiver, the TM-D710A/E transceiver, an antenna and miscellaneous interconnect cables. As you travel, you will be looking for position beacons from nearby stations so you can enjoy exchanging messages and making voice contact.

The TM-D710A/E already includes functions for convenient mobile operation. Functions like Frequency Display, Decay Algorithm, Proportional Pathing and SmartBeaconing are ready to use. Decay Algorithm automatically extends the transmission interval to reduce traffic loading when the speed information from GPS indicates vehicle movement is slower than 1 knot. One knot is equal to 1.8 km/h, or just over 1 mile per hour. Essentially, this indicates your vehicle is parked. Proportional pathing makes sure that local information is refreshed frequently, while at the same time minimizing network load by transmitting less often at greater distances (number of hops). SmartBeaconing efficiently controls the rate of beacon transmissions in relation to vehicle speed, direction of travel and network activity. Still other functions exist to maximize messaging convenience while driving.

#### 6.1.1.1 Automatic Reply Function

On receipt of a message, Automatic Reply automatically acknowledges the message by returning a preconfigured message such as: "I am QRX. Will return at 12:35."

Auto Reply is only for passing along special information to anticipated message senders when the operator may temporarily not be able to respond. It should not be left on for routine operations in most cases because it adds unnecessary network load. The sending station will always get an ACK, and this is sufficient to know that the message was delivered in most cases.

#### 6.1.1.2 Voice Announcement Mode

Voice Announcement mode instructs the TM-D710A/E to read aloud any message text beginning with "%" provided the VGS-1 is installed. The VGS-1 can speak a few common ham radio words but can spell any words by letter too.

#### 6.1.1.3 Entering Characters

Characters can be entered using the DTMF keypad on the microphone as you would when texting from a cell phone.

Additional details of important functions follow.

### 6.1.2 Decay Algorithm Function

The position beacon for a mobile station is usually transmitted at a fixed time interval to provide consistency in vehicle tracking and station participation. However, when traffic is slow-moving, it would be inefficient use of air-time to continue transmitting at this fixed interval. Therefore, while parked or moving slowly, the beacon transmission interval gradually increases by using a decay algorithm. This cleverly reduces air-time used by the station without reducing the quality of station information being made available to the system.

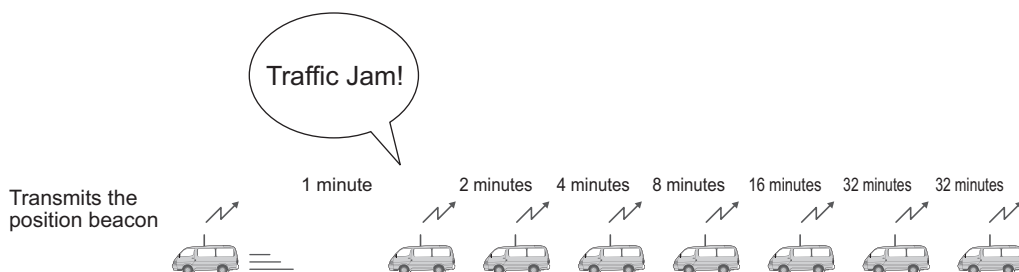


Figure 6-1 Decay Algorithm

Decay Algorithm steps the transmission interval of the beacon down from 1 to 2 to 4 to 8 to 16 to 32 minutes when the mobile station is not moving. The speed at which Decay Algorithm decides that the car is parked can be set using the **Stopped** dropdown list in the **Page 7** tab of the **APRS/ NAVITRA** window of the MCP-2A programming software. If the mobile station’s speed is less than this setting, then Decay Algorithm will start.

### 6.1.3 Proportional Pathing Function

Proportional pathing recognizes that the value and timeliness of local information is more important close to the sender and of less importance farther out in the network. To minimize loading on the network from distant stations, the TM-D710A/E implements Proportional Pathing to maintain a high update rate for local packets, but divides that rate by two at each additional hop through the network as shown in the diagram below. If the transmit rate is set to 1 minute, then locally, the packet will be seen every minute. But this will only be seen every 2 minutes via the local digipeater. It will only be seen once every 4 minutes via surrounding two hops. This algorithm drastically reduces the APRS network load, while still providing good tracking to local mobiles.

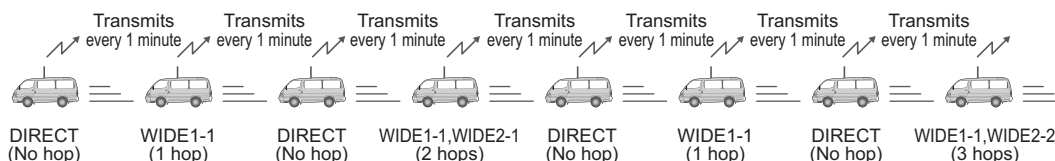
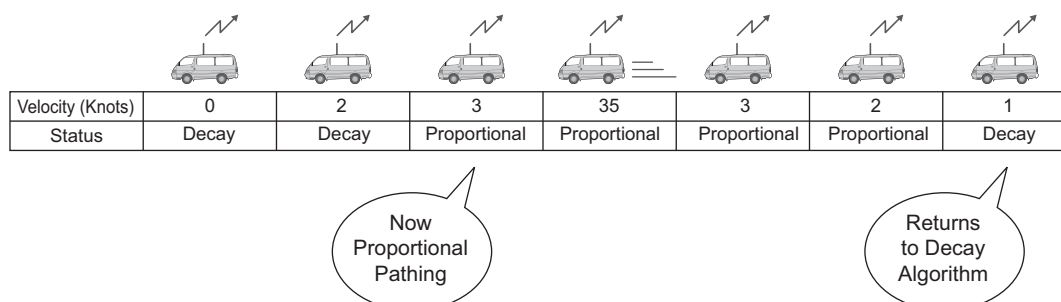


Figure 6-2 Proportional Pathing adjusts Number of Relays (when using WIDE1-1,WIDE2-2)

To alleviate this problem, Proportional Pathing automatically changes the number of packet relay hops every time the beacon is transmitted. The effect of this is that nearby stations will receive updates frequently while more distant stations will receive half as many updates. The speed at which Proportional Pathing decides that the car is moving can be set using the **Moving** dropdown list in the **Page 7** tab of the **APRS/ NAVITRA** window of the MCP-2A programming software. If the mobile station’s speed exceeds this setting, then Proportional Pathing will start.

## 6.1.4 Simultaneously using Decay Algorithm and Proportional Pathing

Refer to the diagram below to understand what occurs when both Decay Algorithm and Proportional Pathing are used at the same time.



**Figure 6-3 Switching between Decay Algorithm and Proportional Pathing (when Stopped=1 (knot); Moving=3 (knots))**

As the example above shows, when the mobile's speed exceeds 3 knots, Decay Algorithm stops and Proportional Pathing begins. Similarly, when the mobile's speed drops below 1 knot, then Proportional Pathing stops and Decay Algorithm begins.

**Note:** The Stopped value cannot be configured higher than the Moving value, and the Moving value cannot be configured lower than the Stopped value.

## 6.1.5 SmartBeaconing (Written by Steve Bragg, KA9MVA)

SmartBeaconing was added beginning with operation panel firmware version 2.00 for the TM-D710A/E and RC-D710. SmartBeaconing was developed by Mr. Steve Bragg, KA9MVA and Mr. Tony Arnerich, KD7TA in 1998. SmartBeaconing uses the traveling direction and speed information that is received from the GPS receiver to efficiently transmit the beacon. There are two factors that come into play when determining how SmartBeaconing functions: distance traveled since last beacon transmission, addressed by using Variable Rate Beaconing to change the transmission interval with speed, and heading change since last beacon transmission, referred to as Corner Pegging.

### 6.1.5.1 Variable Rate Beaconing (Transmission Interval Changes with Speed)

When your mobile station is moving at a speed less than LOW SPEED as set in the menu, the position beacon repeatedly transmits at the interval of SLOW RATE as set in the menu. When your mobile station is moving faster than HIGH SPEED as set in the menu, the position beacon repeatedly transmits at the interval of FAST RATE as set in the menu. And if your mobile is traveling at any speed between LOW SPEED and HIGH SPEED, then the beacon transmits at an interval that varies linearly according to the speed traveled. The transmission interval extends longer as the speed becomes slower, and the interval becomes shorter as the speed gets faster.

**Table 6-1 Relationship between Speed and Beacon Transmission Interval**

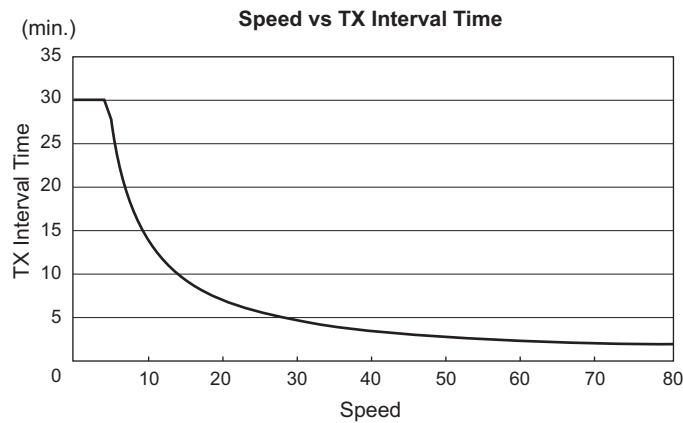
Speed	Transmission Interval
Over HIGH SPEED	FAST RATE
Under HIGH SPEED Over LOW SPEED (Only when HIGH SPEED ≥ LOW SPEED)	Calculate using the formula below: $\text{FAST RATE} \times \text{HIGH SPEED} \div \text{current speed} = \text{transmission interval time}$
Under LOW SPEED	SLOW RATE

**Table 6-2 Configuration Example**

Menu Item	Configured Value
LOW SPEED	5
HIGH SPEED	70
SLOW RATE	30 minutes
FAST RATE	120 seconds

**Table 6-3 Variable Rate Beacons Example:**  
 (with LOW SPEED = 5, HIGH SPEED = 70, SLOW RATE = 30 min, FAST RATE = 120 sec)

Speed	TX interval Time (FAST RATE = HIGH SPEED ÷ Speed)
80	120 seconds (2 minutes)
70	120 seconds (2 minutes)
60	140 seconds (2 minutes and 20 seconds)
50	168 seconds (2 minutes and 48 seconds)
40	210 seconds (3 minutes and 30 seconds)
30	280 seconds (4 minutes and 40 seconds)
20	420 seconds (7 minutes)
10	840 seconds (14 minutes)
5	1680 seconds (28 minutes)
0	1800 seconds (30 minutes)



**Figure 6-4 Speed vs TX Interval Time**

**Note:** The unit of Speed can be configured by using Menu 626.



### 6.1.5.2 Corner Pegging (Transmission after Heading Change)

When the mobile station's speed is above LOW SPEED, Corner Pegging begins operating. A Corner Pegging position beacon will be transmitted when the heading difference exceeds the TURN THRESHOLD value. The heading difference is the compass heading of the present direction of travel (in degrees) subtracted from the compass heading transmitted in the previous position beacon. (Technical note: only the absolute value of the heading difference, normalized to the first and second quadrants, is used.) The threshold value called TURN THRESHOLD combines a fixed angle threshold, called TURN ANGLE, with a constant called TURN SLOPE, times ten, divided by the present speed. You can use the formula below to calculate TURN THRESHOLD.

By changing the value of TURN SLOPE, you can adjust how Corner Pegging responds as the mobile station executes curves. When the value of TURN SLOPE is increased, a large heading angle change is necessary to cause a position beacon transmission, especially at low speeds. When the value of TURN SLOPE is reduced, the effect of speed on Corner Pegging is reduced, as the constant TURN ANGLE becomes the controlling term in the equation. A value for TURN SLOPE of 110 (in units of 10 degrees per mph) has been experimentally determined to be a good value for vehicles on typical roads.

#### Corner Pegging Formula:

$$\text{TURN THRESHOLD} = \text{TURN ANGLE} + 10 \times \text{TURN SLOPE} / \text{SPEED}$$

The above formula is based on the reality of how a mobile station executes turns: when traveling at slow speed, it can turn acute angles, but when traveling at high speeds, it turns only shallow angles. In other words, TURN THRESHOLD varies inversely with speed: at a low speed, the threshold becomes large, while at a high speed the threshold becomes small.

To prevent the Corner Pegging beacon from transmitting too often and causing QRM, there is a timer value called TURN TIME. The Corner Pegging position beacon is not transmitted until TURN TIME seconds have elapsed since the previous beacon transmission, regardless of which method (Corner Pegging or Variable Rate Beaconing) caused the previous beacon.

**Table 6-4 Conditions for Corner Pegging Operation**

Speed	Corner Pegging
Over HIGH SPEED	Yes
Under HIGH SPEED Over LOW SPEED (Only when HIGH SPEED $\geq$ LOW SPEED)	Yes
Under LOW SPEED	No

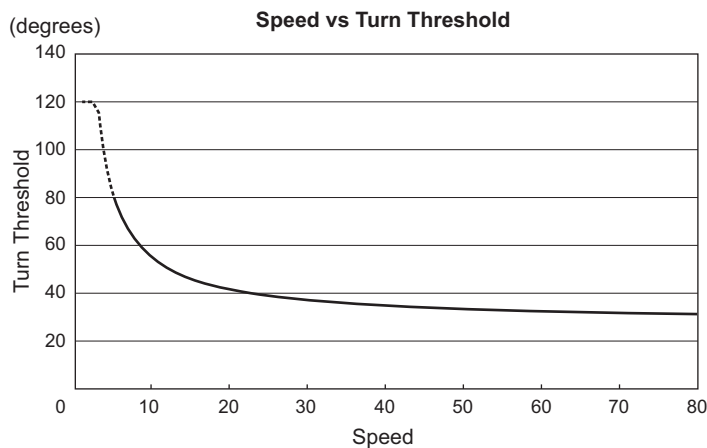
**Table 6-5 Configuration Example**

Menu Item	Configured Value
LOW SPEED	5
TURN ANGLE	28 degrees
TURN SLOPE	26 (x10 deg/speed)
TURN TIME	30 seconds

**Table 6-6 Corner Pegging Operation Example:**  
(with TURN ANGLE = 28, TURN SLOPE = 26)

Speed	TURN SLOPE	TURN SLOPE ÷ Speed (Cut off after the decimal point) (1)	TURN ANGLE (2)	TURN THRESHOLD (3) = (1) + (2)
80	26 (x10)	3°	28°	31°
70	26 (x10)	3°	28°	31°
60	26 (x10)	4°	28°	32°
50	26 (x10)	5°	28°	33°
40	26 (x10)	6°	28°	34°
30	26 (x10)	8°	28°	36°
20	26 (x10)	13°	28°	41°
10	26 (x10)	26°	28°	54°
5	26 (x10)	52°	28°	80°
2	26 (x10)	130°	28°	158° → 120°

**Note:** When TURN THRESHOLD exceeds 120 degrees, the value will be corrected to 120 degrees.



**Figure 6-5 Speed vs Turn Threshold**

### 6.1.5.3 Operation Example

Here are the TM-D710A/E default settings for position beacon transmissions using the SmartBeaconing configuration as shown below.

**Table 6-7 SmartBeaconing Configuration Values**

Menu Item	Configured Value
LOW SPEED	5
HIGH SPEED	70
SLOW RATE	30 minutes
FAST RATE	120 seconds
TURN ANGLE	28 degrees
TURN SLOPE	26 (x10 deg/speed)
TURN TIME	30 seconds

**Note:** If SmartBeaconing does not result in appropriate beacon transmissions, then you must re-configure individual parameters so as to more closely match driving conditions.

## 6.1.6 QSY Function

The QSY function uses AFRS (Automatic Frequency Reporting System) to report a frequency on which voice communications can be established. A station using the QSY function embeds the frequency information in a position beacon transmission. A receiving station of this information can change frequency, or QSY, over to the reported voice frequency to begin voice communication by the press of **[TUNE]** on the TM-D710A/E.

### 6.1.6.1 Transmitting QSY Information

A properly configured functioning TM-D710A/E QSY station can automatically embed the voice frequency from the non-data band to the beginning of status text. In Status 5, “[Freq MHz]” is entered. This is the mechanism used for automatically transmitting the frequency information. The format of the transmitted frequency is FFF.FFF MHz.

So, for example, if at the time of a beacon transmission, the non-data band has a frequency of 446.100 MHz selected, then the frequency of “446.100MHz” gets embedded to the beginning of the status text. If you configure in any of Statuses 1 through 4 the frequency of “446.100MHz” at the beginning of the status text messages, then this fixed frequency will be transmitted as QSY information along with the beacon transmission. In addition to frequencies, there are fields where you can send other settings such as Wide/Narrow, Tone/CTCSS/DCS, Shift (+/-), and Offset frequency simply by leaving one space between each value. Therefore, other information besides just a frequency can be sent.

#### QSY Information Format:

(Insert one space after the frequency before entering Wide/Narrow, Tone/CTCSS/DCS and Shift/Offset.)

- “T079”: An upper case “T” indicates Wide. Tone frequency of 79.7 Hz. (Encoding)
- “t079”: A lower case “t” indicates Narrow. Tone frequency of 79.7 Hz. (Encoding)
- “tOFF”: A lower case “t” indicates Narrow. Tone = OFF (Without any tone Encoding or Decoding.)
- “C079”: An upper case “C” indicates Wide. CTCSS frequency of 79.7 Hz. (Encoding/ Decoding)
- “c079”: A lower case “c” indicates Narrow. CTCSS frequency of 79.7 Hz. (Encoding/ Decoding)
- “D023”: An upper case “D” indicates Wide. DCS code of 023. (Encoding/ Decoding)
- “d023”: A lower case “d” indicates Narrow. DCS code of 023. (Encoding/ Decoding)
- “+” : Plus Shift (A default offset frequency is applied.)
- “-” : Minus Shift (A default offset frequency is applied.)
- “+500” : Plus Shift, 5MHz Offset (“+5000kHz” is also available)
- “-060”: Minus Shift, 600kHz Offset (“-0600kHz” is also available)

The value of the Offset shall be a 3-digit numeric. (x 10kHz/ 50kHz step)

**Note:** For detailed information on the QSY Function format, refer to the following link (<http://www.ew.usna.edu/~bruninga/aprs/freqspec.txt>). The TM-D710A/E transceiver complies with the standard which was proposed by Bob Bruninga, WB4APR.

**Configuration Examples:**

(Insert one space after the frequency before entering Wide/Narrow, Tone/CTCSS/DCS and Shift/Offset.)

- “446.100MHz”: Voice frequency configured for 446.100 MHz, Wide, Tone = None, Simplex
- “446.100MHz T071”: Voice frequency configured for 446.100 MHz, Wide, Tone of 71.9 Hz, Simplex
- “446.100MHz t071”: Voice frequency configured for 446.100 MHz, Narrow, Tone of 71.9 Hz, Simplex
- “446.100MHz C100” : Voice frequency configured for 446.100 MHz, Wide, CTCSS of 100 Hz, Simplex
- “446.100MHz c100”: Voice frequency configured for 446.100 MHz, Narrow, CTCSS of 100 Hz, Simplex
- “446.100MHz D023”: Voice frequency configured for 446.100 MHz, Wide, DCS 023, Simplex
- “446.100MHz d023”: Voice frequency configured for 446.100 MHz, Narrow, DCS 023. Simplex
- “446.100MHz tOFF”: Voice frequency configured for 446.100 MHz, Narrow, Tone = None, Simplex
- “146.850MHz” : Voice frequency configured for 146.850 MHz, Wide, Tone = None, Minus Shift, 600kHz Offset (TM-D710A's Auto Repeater Offset may work)
- “444.750MHz TOFF +”: Voice frequency configured for 444.750 MHz, Wide, Tone = None, + Shift, Offset = default on UHF band (5MHz)
- “146.850MHz T131 -060”: Voice frequency configured for 146.850 MHz, Wide, Tone = 131.8Hz, - Shift, 600kHz offset
- “146.850MHz T131 -0600kHz”: Voice frequency configured for 146.850 MHz, Wide, Tone = 131.8Hz, - Shift, 600kHz offset,  
“-0600kHz”, 600kHz offset: The last digit “0kHz” is ignored by the TM-D710A it's just for easier understanding for operators.
- “444.7625MHz tOFF +”: Voice frequency configured for 444.7625 MHz, Narrow, Tone = None, +Shift, Offset = 5 MHz (Default value on UHF band)
- “444.7625MHz t131 +4MHz”: Voice frequency configured for 444.7625 MHz, Narrow, Tone = 131.8Hz, +Shift, Offset = 5 MHz (Default offset on UHF band), “4MHz” is not allowed and it results in a syntax error for TM-D710A so that the default offset 5 MHz (K-type) is applied instead.

```

12:00
STATUS TEXT 608
▶ 5 TEXT :▶[Frc= MHz]Now listening
TX RATE : 1/1
ESC BACK ← → SPACE INS CLR

```

**Figure 6-6 Status Text 5**

```

12:00
STATUS TEXT 608
▶*2 TEXT :▶446.100MHz C100
TX RATE : 1/1
ESC BACK ← → SPACE INS CLR

```

**Figure 6-7 Status Text 2 Input Example**

### 6.1.6.2 Receiving QSY Information

The TM-D710A/E receives QSY information not only from another TM-D710A/E, but also location information from other software as well as QSY information and repeater frequency object information embedded in status text. You can confirm the QSY information that is received as embedded data by checking the voice frequency at the beginning of the status text on the Station List screen.

To immediately select the frequency, press **[DETAIL]**, switch on the List Detail screen and press **[TUNE]**. The transceiver will change quickly to the non-data band frequency. Also, on the Station List screen, information that already is embedded in the QSY information will appear on the right side of the screen and can be easily confirmed. You can quickly switch over to the non-data band frequency by pressing **[TUNE]**.

Wide/Narrow, Tone/CTCSS/DCS and Shift/Offset configuration information can be received as status text with firmware version 2.0 or later. Pressing **[TUNE]** allows you to modify the voice frequency, and also to configure Wide/Narrow, Tone/CTCSS/DCS and Shift/Offset.

```

APRS12 STATION LIST
1:W6DJV-9 11:14 TM-D710 446.100
2:W6DJV-9 10:12 TM-D710 146.850
3:W4DJV-1 10:11 Fixed 444.750
ESC F MSG SORT FILTER TUNE CLR

```

Figure 6-8 QSY Station List Screen

### 6.1.6.3 QSY Functions and EchoLink

EchoLink system operators can configure their nodes to generate APRS objects that contain their QSY Frequency information. These beacons can either be transmitted locally on the APRS channel, or generated directly to the APRS-IS for dissemination back to RF via the local IGate station. It is important for nearby travelling mobiles to see these QSY Frequency objects on their maps and the front panel of their TM-D710A/E transceivers when traveling in new areas.

## 6.1.7 Message Function

The Message function closely resembles other amateur radio modes since it consists of exchanging messages with hams. You can send a message by entering a callsign of the message recipient. You'll receive an acknowledgement (ACK) message back when the targeted station receives the message. You can also enjoy group messaging by using a group name instead of a callsign. A group name can be configured via Menu 623. In addition, there is a bulletin function. Using bulletins, you can report on upcoming events or other information to a large collection of users over a broad region.

### 6.1.7.1 Automatic Reply Message

The Automatic Reply Message function replies to messages that you receive while you are driving. You can pre-configure a message response such as “I am QRX. Will return at 12:35.”. When using TH-D7A/E or TM-D700A/E, a response message was returned to all message senders. But, beginning with TM-D710A/E, an individual can be selected to receive a reply.

You can configure callsigns to which you want to reply. When the “\*” wildcard is used, the transceiver will respond to all message senders. But if you set “W6DJY”, the transceiver will reply only to W6DJY. Configuring “W6\*” will trigger a reply only to senders with W6 as their callsign prefix.



Figure 6-9 Automatic Reply Message Configuration Screen

### 6.1.7.2 Message Speech Synthesis

While in Voice Announcement mode, any message text beginning with “%” will be read aloud including callsigns provided the VGS-1 is installed and configured. Menu 624 (APRS VOICE) must be configured On.

#### Example:

%I am QRX. Will return at 12:35.

The callsign and message will be read out loud letter by letter (not word by word) when a message like this is received.

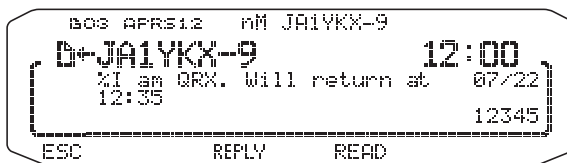


Figure 6-10 Voice Announcement Mode

### 6.1.7.3 TX Beep (Beacon)

Select Menu 624 (SOUND - TX BEEP (BEACON)) and select “ON” to sound a beep everytime the TM-D710A/E transmits a beacon. It is convenient for monitoring the beacon transmissions when SmartBeaconing or Decay Algorithm is used. If “OFF” is selected, the transceiver does not beep even if a beacon is transmitted.

## 6.2 Base Station (Weather Station)

Weather observation equipment intended for use at home is becoming more common. Using this equipment, you can observe and measure wind direction, wind velocity, air temperature, humidity, rainfall, atmospheric pressure, etc. This information can be useful to others when the data is gathered and transmitted in real time via APRS beacon transmissions.

These kinds of weather stations are installed in many parts of the world. Some stations transmit NWS (National Weather Service) information that is dispatched and converted for beacon use. Local important information, such as locations of nearby tornados as they are forming, which has not been registered with central weather bureaus can be transmitted by APRS beacon.

Weather observation equipment can be connected to a TM-D710A/E or RC-D710 in place of a GPS receiver via the GPS connector. The weather observation equipment transfers the meteorological information with serial data and this data is transmitted via beacon transmissions using the APRS weather format. Or you can monitor the meteorological data locally on the screen of the TM-D710A/E or RC-D710. The TM-D710A/E and RC-D710 can display six different meteorological measurements: rainfall, air temperature, wind direction, wind velocity, atmospheric pressure and humidity.

### 6.2.1 Using Meteorological Equipment

Select Menu 602 (APRS - GPS PORT) and configure the GPS terminal settings.

- Baud Rate: 9600 bps (same as weather equipment being used)
- Input: WEATHER (Davis) or WEATHER (Peet Bros.)
- Output: OFF

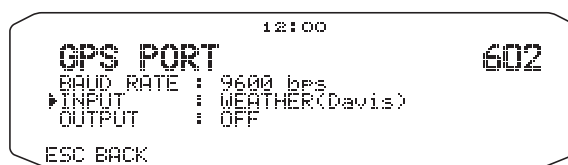


Figure 6-11 Menu 602 (GPS PORT) used with Weather Equipment

Equipment that has been verified with our transceiver includes the following models.

#### 6.2.1.1 Davis Instruments Corp.

The weather station, Vantage Pro2 from Davis Instruments (<http://davisnet.com/weather/products/vantage2.asp>) can be used with TM-D710A/E or RC-D710.

“WeatherLink for Vantage Pro2, Windows, Serial Port” (Davis Part #.06510SER) or “WeatherLink for APRS with Streaming Data Logger” (Davis Part #.06540) is required for TM-D710A/E and RC-D710. Install the adaptor that comes with the above accessories to work with TM-D710A/E or RC-D710.

To communicate with Vantage Pro2, configure the communication baud rate of Vantage Pro2 for 9600 bps using the panel keys and then configure the TM-D710A/E communication baud rate (Menu 602) to 9600 bps as well.

**Note:** 4800 bps (06540/ 06510SER) or 2400 bps (06510SER) may work with TM-D710A/E but we recommend using 9600 bps for stable operation.

### 6.2.1.2 Peet Bros. Company, Inc.

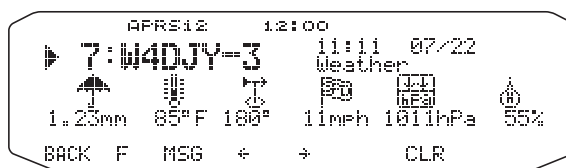
The weather station, ULTIMETER 2100 from Peet Bros. Company (<http://www.peetbros.com/shop/item.aspx?itemid=2>) can also be used with TM-D710A/E or RC-D710.

To communicate with ULTIMETER 2100, configure the TM-D710A/E communication baud rate (Menu 602) to 2400 bps.

**Note:**

- ◆ Because the GPS receiver and the weather observation equipment use the same connector, combined use is not possible.
- ◆ 5 to 10 minutes after powering up the transceiver, you will begin to acquire meteorological data from the weather observation equipment.

Meteorological data that is received from other stations is displayed in the Station List details on the second page. As shown below, the information is easy to understand.



**Figure 6-12 Meteorological Data Display**



# 7 APRS NETWORKS

## 7.1 Servers

In the beginning, APRS networks consisted only of general packet transmissions through digital repeaters. To expand network coverage much further, HF gateway stations that were interfaced with the VHF stations were added. This arrangement evolved still further when it became common for personal computers to be connected with the Internet. Internet gateways provided another way to expand APRS coverage. APRServe, developed by Mr. Steve Dimse, K4HG, allows information that is gathered from the Internet to be transferred to client computers. The worldwide APRS network was completed. The service is called APRS IS (APRS Internet Service).

At present, there are several basic servers that are called Core servers. Approximately 40 local servers, called Tier 2 servers, are located worldwide in each participating country and work under the Core servers. Later, Pete Loveall, AE5PL developed javAPRSSvr to establish a Tier-2 distribution system to better handle regional APRS-IS feeds. The Internet part of the APRS system is called APRS-IS (APRS-Internet Service).

## 7.2 IGate

There are basically two ways to use APRS-IS effectively when operating APRS: a client personal computer connected directly to Core/ Tier 2 servers, and using amateur radio with IGate (Internet gateway).

For client use, a callsign is required, but amateur radio equipment is not necessary. You simply install APRS software on a personal computer, configure the necessary station information and connect to an APRS server via the Internet. With this arrangement, you can enjoy the basic features of APRS such as transmitting your own station position, exchanging messages and dispatch or receipt of weather information.

Using TM-D710A/E or RC-D710, you can transmit your own packet signals via amateur radio and use APRS-IS to access IGate. IGate acts as a two-way interface between the Internet and amateur radio packet signals. The IGate function is obtained through various releases of APRS software and IGate is commonly available as a result of many volunteer amateur radio operators. IGate connects directly to Core servers and Tier 2 servers. Information received by amateur radio packet transmissions is transferred to the servers, and server information can be passed via packet radio transmissions back to amateur radio operators.

New IGate stations in areas where IGate access is already available are added as necessary as traffic warrants. Traffic from IGate to amateur radio stations increases air traffic which can undesirably overload frequencies. Therefore, you must be familiar with operational configurations. Various filtering functions exist so you should be knowledgeable about your local existing IGate station. It is best to minimize traffic as much as possible. In the case of packet messaging, bidirectional data transfers are used.

To use TM-D710A/E or RC-D710 efficiently at a fixed station includes configuring the callsign and the packet path to your local IGate station. In cases of mobile stations, you can similarly initially configure the packet path, but it is good to follow local rules of each new area where you may operate.

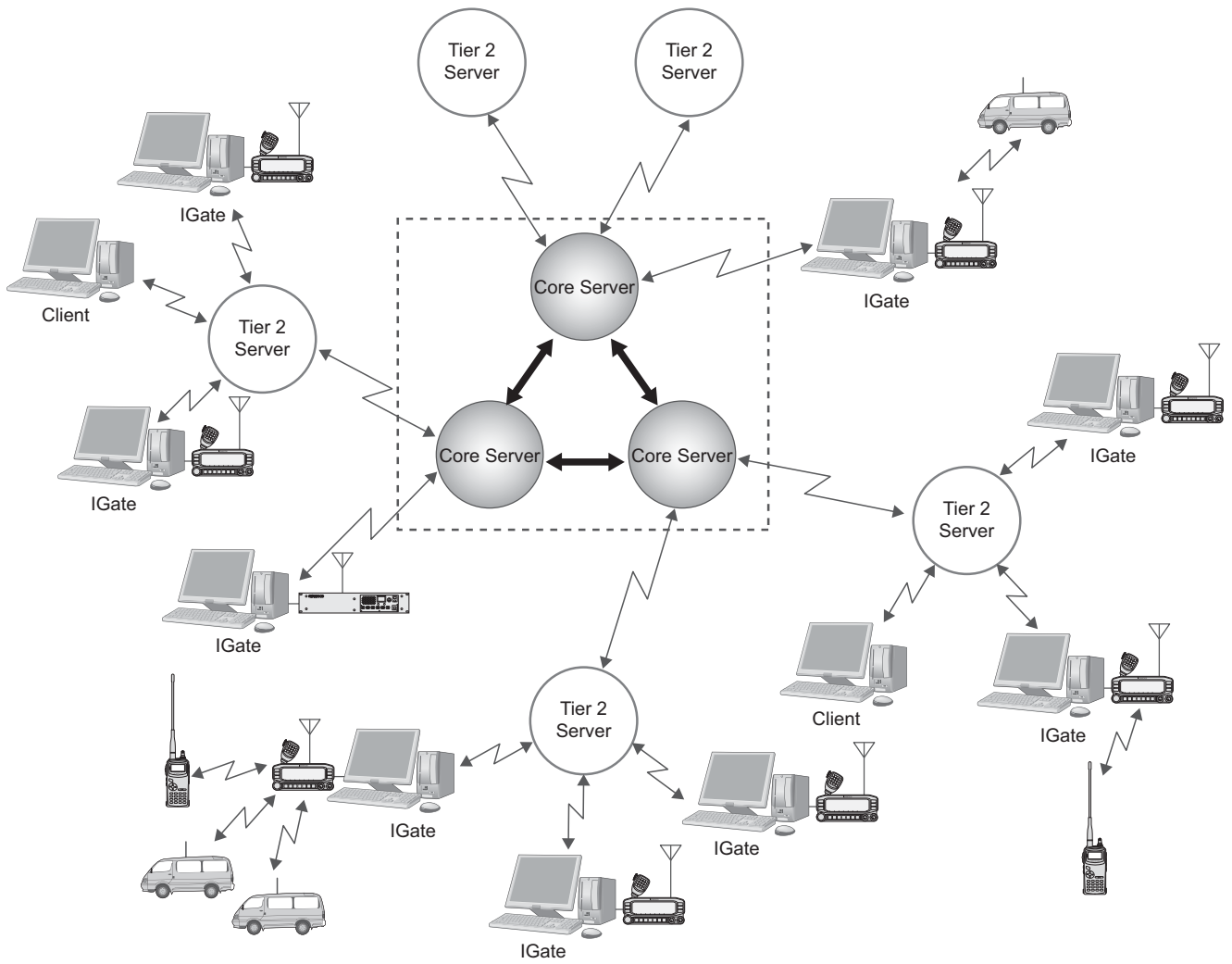


Figure 7-1 APRS Network Conceptual Drawing

## 7.3 Let's Send Email

With TM-D710A/E and RC-D710 it is possible to transmit email by using the Message function.

### 7.3.1 Sending Email with TM-D710A/E and RC-D710

First, press **[MSG]** to show the Message List on the screen. Next, press **[NEW]** to create a message on the screen. Enter "EMAIL" to TO: field using the **Tuning Control** on the panel or the numeric keypad on the microphone.



Figure 7-2 Using Email Function

Next, enter the email address to which you wish to send email. Leave one space blank after the address and begin entering the message text. See an example below.



Figure 7-3 Entering Email Address and Message

The message can be entered using the **Tuning Control** on the panel or the numeric keypad on the microphone. When the message is completely entered, it will be transmitted in an APRS message. Email is transmitted via the IGate and the APRS server is connected to the Internet.

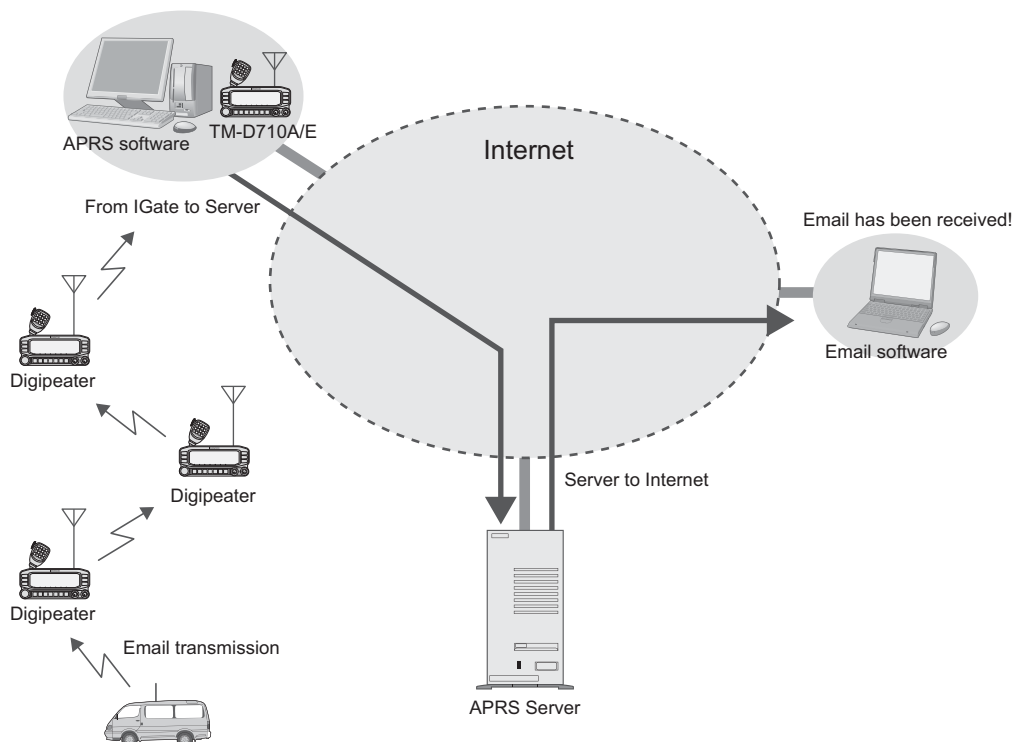


Figure 7-4 Transmission Flow for Email

**Note:** You cannot send email from a personal computer to a mobile station.

## 7.4 Digipeaters (Digital Repeaters)

The greatest feature of APRS is the network that is spreading around the world. The heart of the network is made up of many digital repeaters commonly referred to as digipeaters. Of course, digipeaters are well-known among those who have used packet radio for years. Digipeaters receive data over-the-air via radio signal and repeat or relay it onward. For a voice repeater, two different frequencies are used simultaneously to accomplish this repeater function. However, a digipeater first receives and stores data, and then transmits when the channel clears.

In the earlier times of packet radio and digipeaters, it was required to specify the callsign of each digipeater station. But it was difficult to know which digipeater station to use. If moving in a vehicle, you had to constantly consider changing digipeaters. Now, APRS uses a common generic callsign for all digipeaters referred to as WIDEn-N, where N is the number of hops desired through the network (typically 2). The WIDE terminology lets you know the digipeater is in a good location for repeating signals. A mobile station anywhere only has to specify WIDE1-1 without needing to know a specific callsign of a digipeater in order to digipeat their beacon transmission.

APRS evolved over many years beginning in 1992, and there were many inefficient older network concepts that were still being used in some areas. You still may see references to these obsolete techniques (RELAY, WIDE, TRACE, and TRACEn-N). By 2004, it was decided it was time to abandon those many older inefficient paths and concentrate on only the fully traceable WIDEn-N algorithm. This universal upgrade of the APRS network to just the one simple and traceable WIDEn-N concept was called the New-N Paradigm. Since its adoption, most areas have seen many improvements in local area APRS reliability. In most areas of the country, the number of hops should be no more than WIDE2-2 because additional hops just add too much network load and too much interference from stations far away.

The following sections explain configuration of the TM-D710A/E for use with digipeaters.

### 7.4.1 UIDIGI

With UIDIGI activated (On), when a digipeater receives a UI frame with a character string for alias (such as RELAY, WIDE1-1, etc.) that matches the alias character string in the digipeater, the digipeater repeats the packet substituting the callsign from the digipeater's MY CALLSIGN configuration and adding a completed flag (\*).

UIDIGI should normally be off in a mobile. It is not good for mobiles to be digipeating all packets on the channel because it causes much interference. But sometimes, in special cases, when a mobile is being used on top of a hill or a special weak area to provide temporary emergency digipeating, then UIDIGI can be enabled with the WIDE1-1 alias so that this mobile can serve as the first hop out of an area. WIDE1-1 digipeating only operates on the first hop, so there is not much damage to the network or to other traffic

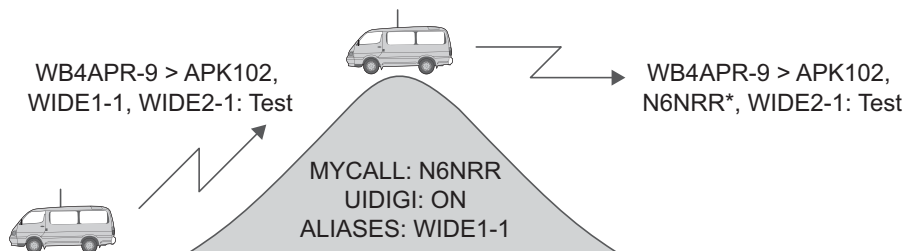


Figure 7-5 Using UIDIGI

## 7.4.2 UIFLOOD

With UIFLOOD activated (On), when a digipeater receives a UI frame with a character string for alias in the form XXXXn-N where XXXX matches the alias character string in the digipeater, the digipeater subtracts 1 from N and processes the packet reporting only the revised character string so as not to make the frame length too long. The UIFLOOD technique does not provide traceable paths, so its use is not recommended except for supporting the SSn-N or SSSn-N state or regional paths. Also the example should change to start with SS3-3 instead of WIDE3-3. UIFLOOD should very rarely be used by mobiles.

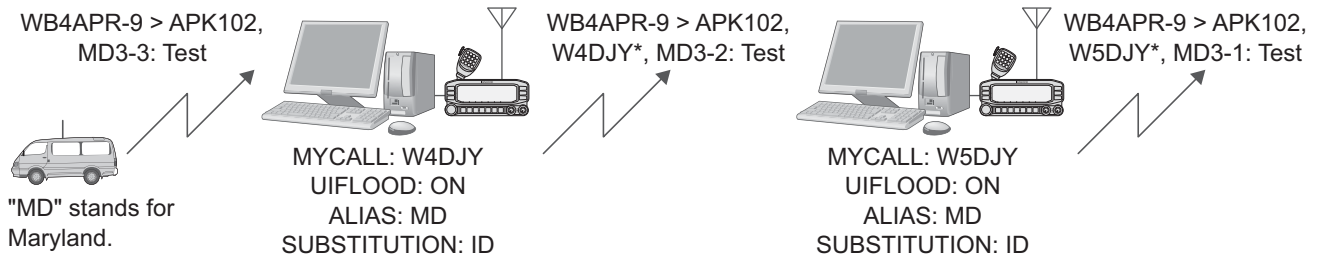


Figure 7-6 Using UIFLOOD

The UIFLOOD method of digipeating is only a function of a full sized properly configured permanent digipeater. If a mobile is activated with UIFLOOD, it can cause much unnecessary interference to the network. The only time to ever activate a mobile with UIFLOOD is in very special cases, when a mobile is being used on top of a hill to provide temporary emergency digipeating to replace a broken or missing wide area digipeater.

## 7.4.3 UITRACE

UITRACE functions similar to UIFLOOD with the difference that UITRACE reports the full relay path of digipeaters that were used to relay the message. UITRACE is the most powerful and traceable digipeating function in APRS. It is the basis of the New-N paradigm discussed in 7.4 Digipeaters. Therefore, with UITRACE activated (On), when a digipeater receives a UI frame with a character string for alias in the form XXXXn-N where XXXX matches the alias character string in the digipeater, the digipeater subtracts 1 from N and processes the packet reporting each of the previous digipeaters as well as itself resulting in a frame length that becomes longer as the message is relayed. Using UITRACE allows you to confirm the exact routing of any message. Like UIDIGI and UIFLOOD, UITRACE should normally never be enabled by a mobile except in very unusual circumstances.

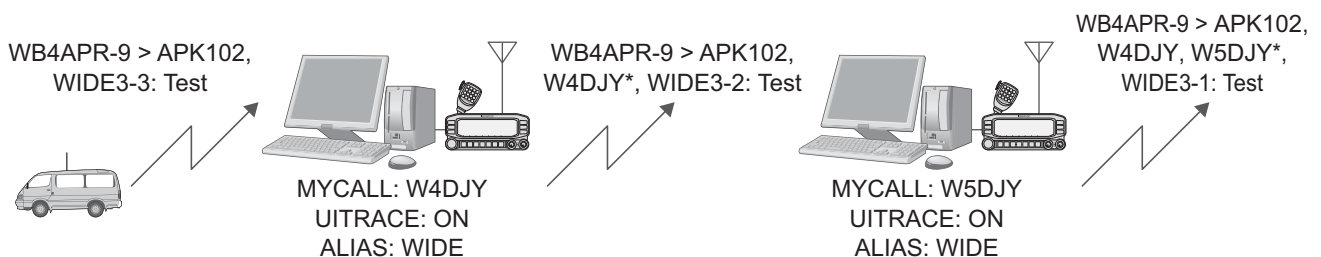


Figure 7-7 Using UITRACE

Although UITRACE using the normal APRS network path of WIDEn-N can be a problem if mobiles activate their digipeater at the wrong time, it is also so powerful, that it is a shame not to be able to use it easily if required. For this reason, all APRS mobiles are encouraged to activate the UITRACE permanently, BUT using the alias of TEMP instead of WIDE. This makes the mobile always possible to use as a TEMPn-N digipeater while avoiding the problem of adding interference to the normal use of WIDEn-N.

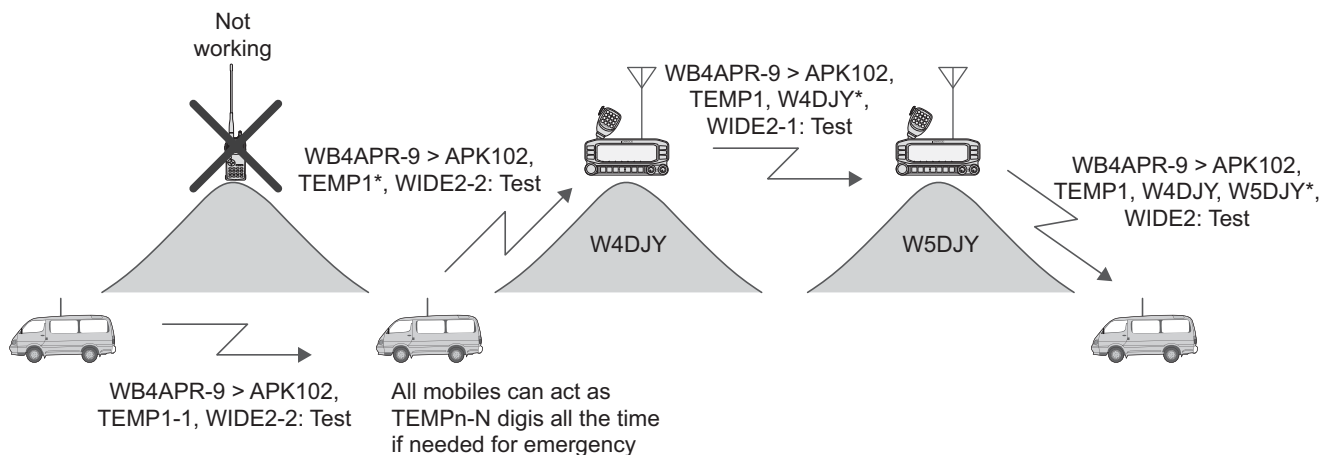


Figure 7-8

### 7.4.4 Configuration Examples (U.S.A.)

Two configuration examples are shown below.

#### Example 1:

This example shows configuration for a typical TM-D710A/E mobile installation for general use in routine operation.

#### UIDIGI

UIDIGI: OFF

ALIAS: WIDE1-1

(This allows this mobile to become a first-hop digipeater by simply configuring UIDIGI to On.)

#### UIFLOOD

UIFLOOD: OFF

ALIAS: NONE

SUBSTITUTION: ID

(This is not used. If this mobile is needed as a temporary digipeater, then this field can be used in support of SSn-N. But if WIDEn-N temporary support is needed, then the UITRACE command can be used.)

#### UITRACE

UITRACE: ON

ALIAS: TEMP

(This allows TM-D700A/E, TM-D710A/E or RC-D710 to always be a temporary digipeater at any time and anywhere in support of the TEMPn-N path.)

#### Example 2:

This is a general recommendation for permanent digipeaters installed at a high location.

**UIDIGI**

UIDIGI: ON

ALIAS: SAR

(other local paths can be defined here)

**Note:** SAR stands for "Search and Rescue".**UIFLOOD**

UIFLOOD: ON

ALIAS: SS or SSS

SUBSTITUTION: ID

(where SS or SSS is the abbreviation of state or ARRL section)

**UITRACE**

UITRACE: ON

ALIAS: WIDE

### 7.4.5 Proper Configuration (written by Bob Bruninga, WB4APR)

New-N Paradigm recommends three major routing paths. The most important is the National Standard of WIDEn-N (usually 2-2). It should always be used for routine operations. However there are two other possible network arrangements for special situations: SSn-N and TEMPn-N.

SSn-N is for state or ARRL section communication special nets. These nets are called up for drills or for emergencies. During these periods, it is desirable to have all APRS participants over the state or section area to be able to communicate among each other. In some states, this may take more than a 2-hop path. But using more than 2 hops also causes many packets to go outside of the state and to add QRM in adjacent areas which is poor operating practice.

To allow longer hops within the state or section for these events, the SSn-N routing mechanism can be used. For example, using WIDE3-3 from the middle of Maryland would reach all digipeaters in Maryland, but someone in the far west or far southeast would need 5 hops. But such a 5-hop path would cause QRM over 13 states! However, by using the state routing path of MD5-5, the sender's packets will go a full 5 hops in Maryland, but will not go into any adjoining states. In fact, for the user in the center that only needs 3 hops, it does not make any difference to use MD5-5 or MD3-3, because in either case, his packets will hit all the digipeaters in Maryland. So for state-wide drills, the recommended path is MD5-5 for all participants anywhere in the state.

The TEMPn-N system is an emergency backup system that is inherent in all TM-D700A/E and TM-D710A/E mobile transceivers. These transceivers can all be used as backup emergency digipeaters in support of special needs. All mobiles should be programmed to act as digipeaters for TEMPn-N packets. In this way, these mobiles are always ready and enabled to act as digipeaters for this special path but, on the other hand, they do not digipeat any other packets so they do not add any QRM to normal operations (using WIDEn-N or SSn-N). But at any time, someone in a valley, or after digipeaters are lost in an emergency, the path of TEMPn-N might be able to get out by hopping mobile to mobile.

To further benefit this alternate backup digipeating technique, some special battery-powered backup digipeaters at high locations can also support this path.

## 7.5 Packet Path

It is necessary to confront the issue of frequency congestion due to the spread of APRS systems in order to efficiently transfer packet data. The TM-D710A/E supports the configurations of New-N Paradigm, RELAY Paradigm and STATE/SECTION/REGION. Overall, this provides an efficient mechanism for transferring packets.

### 7.5.1 New-N Paradigm

Appropriate configuration is required in order to digipeat a packet path (relay route). New-N Paradigm using WIDEn-N assigns an alias and a relay stage number for digipeaters. This system is mainly used by digipeaters in North America. Japan is also using this system and it is spreading worldwide.

For example, when you desire three hops, then you can configure TOTAL HOPS: 3. Once configured, you can verify by using PATH IS VIA WIDE3-3. Until recently, when a regional digipeater was wanted, RELAY was used but this is being replaced by WIDE1-1 simply by configuring On via menu selection. Again, you can verify that WIDE1-1 or WIDE2-2 was used by using PATH IS VIA.

### 7.5.2 RELAY Paradigm

This is one of the digipeat types used in Europe. The old backwards compatible RELAY technique was included for some areas that have still not updated to the universal New-N Paradigm using traceable WIDEn-N. It allows the first hop to be via the RELAY path and then uses TRACEn-N for subsequent hops. Most of the USA is using the New-N Paradigm. But Europe has not yet fully coalesced into a single common system as of this writing.

### 7.5.3 STATE/ SECTION/ REGION

In contrast to WIDEn-N which generates packets equally in all directions, you can use STATE/ SECTION/REGION to restrict packets to only be relayed within the specified boundary. Abbreviations, such as two letter AZ for Arizona or three or four letter abbreviations such as NCA for Northern California, are used to specify the boundary.

Using these limited regions, it is possible for stations to set up special nets under special circumstances to communicate over large distances without adding interference to other areas not involved. For example, using WIDE5-5 from the middle of Maryland would generate hundreds of packets of interference in 13 surrounding states! This is why nothing larger than WIDE2-2 is recommended. However, using MD5-5 from anywhere within the state of Maryland will get from any corner to every other corner of Maryland (maybe 13 digipeaters total and with no duplications) Thus a special Maryland APRS net in support of disaster training can be held without bothering surrounding states.



## 7.6 Using APRS and EchoLink Simultaneously

Both EchoLink Sysop mode and APRS/Packet mode using the internal TNC can be used at the same time. This means that a single TM-D710A/E transceiver can serve as an EchoLink node station and APRS/Packet station to transmit beacons or work as a digipeater simultaneously.

To operate in EchoLink Sysop mode and use the APRS/Packet station with a single TM-D710A/E transceiver, assign a different band for the external data band (Menu 517) for EchoLink and the internal data band for Packet (Menu 529) or for APRS (Menu 601). For example, if B-band is assigned for EchoLink, assign A-band for APRS/Packet mode. Since TM-D710A/E cannot transmit on 2 frequencies at the same time, the transceiver transmits on the band on which a transmission request comes first. If you wish to communicate between the internal TNC and a PC for Packet mode operation, you will need another PG-5H programming cable kit in addition to the PG-5H cable kit that is used for EchoLink Sysop mode.

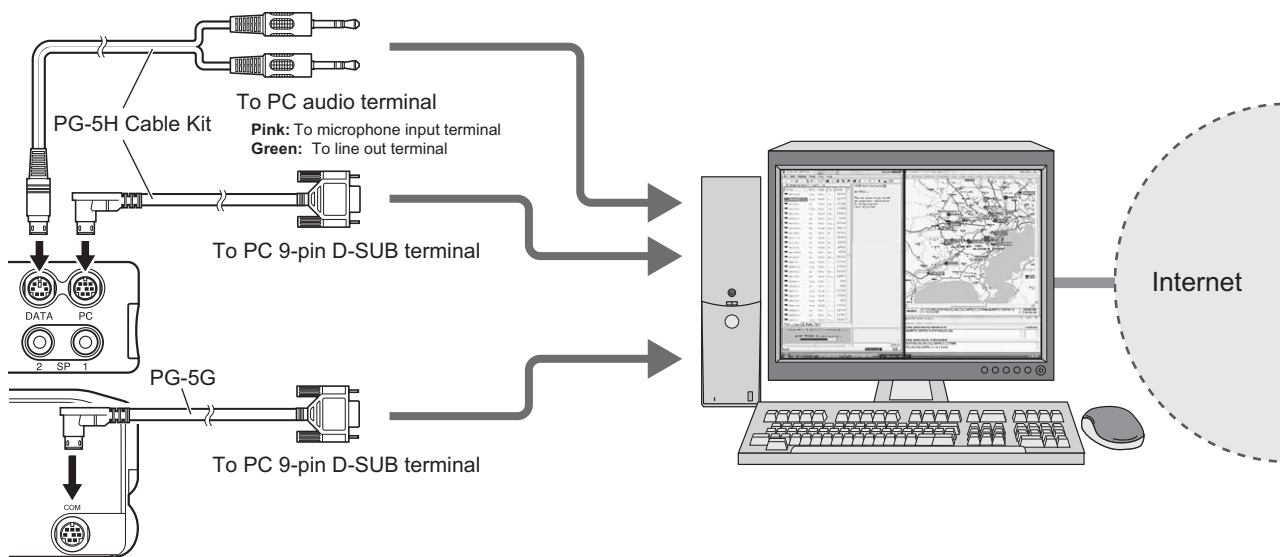


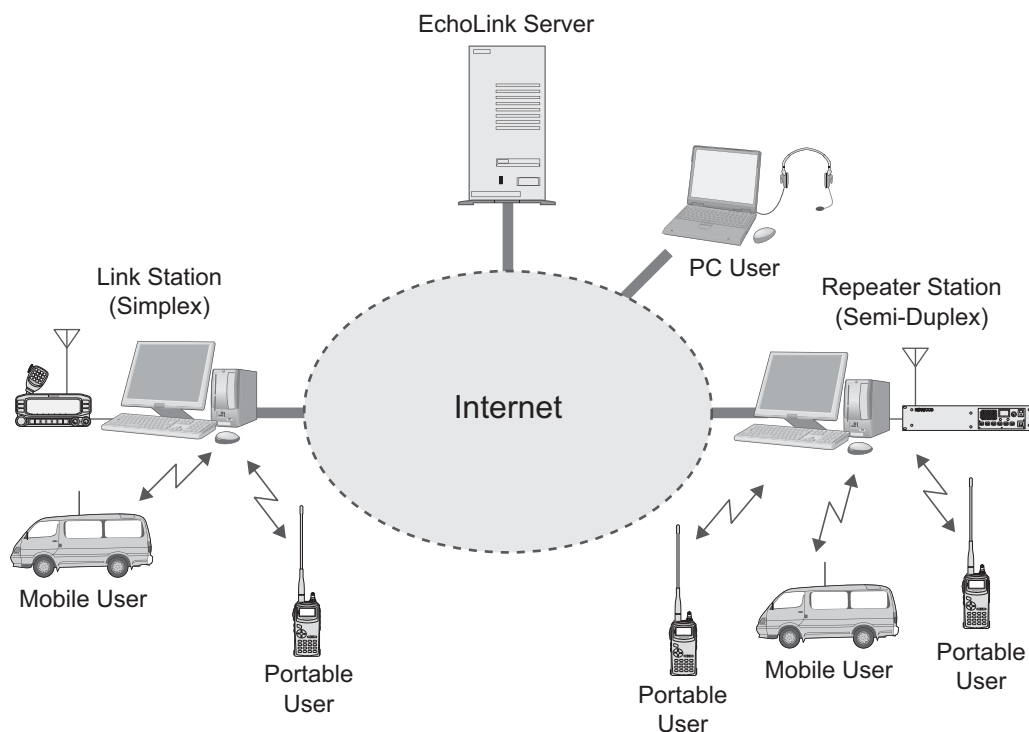
Figure 7-9 Using APRS and EchoLink

### 7.6.1 Transmitting Node Information

Configure the EchoLink frequency in the transmit data for the QSY function. Configure the APRS icon for EchoLink. Since data is transmitted using APRS with a beacon transmission, this will send the EchoLink information.

## 8.1 What is EchoLink?

EchoLink is a system that links amateur radio stations together using the Internet and allows amateur radio operators to enjoy speech communication with other operators via this worldwide network.



**Figure 8-1 EchoLink System Architecture**

There are many access points for EchoLink (called EchoLink nodes), such as repeater stations and link stations that connect to the Internet.

Using DTMF codes transmitted from a transceiver to access a nearby EchoLink node, it is possible to communicate with amateur radio stations located at many places in the world. Also, by using the EchoLink software without using any transceiver at all, you can have QSOs directly from a personal computer. This is a major feature of EchoLink.

In order to operate an EchoLink node (link station or repeater station) or to make QSOs directly from a personal computer, register at the official EchoLink site and then download the software. You must have a valid callsign to be able to complete the registration process. Refer to the EchoLink site for details on how to validate your callsign. After being validated, you can connect to the EchoLink system by using the downloaded software. Furthermore, like the Mobile User and the Portable User shown in Figure 8-1, software and validation is not necessary when you access EchoLink nodes from amateur radio equipment.

The EchoLink system is offered free of charge to the amateur radio community, and is supported by a network of volunteers.

For operation details and information about EchoLink nodes, visit the official EchoLink site at <http://www.echolink.org>.

In addition, there is much information on the Internet pertaining to EchoLink besides the official site where you can find useful operating tips.

## 8.2 EchoLink and the TM-D710A/E (written by Jonathan Taylor, K1RFD)

The Kenwood TM-D710A/E (and TM-V71A/E) is the first commercially-available amateur radio transceiver with built-in EchoLink system capabilities. There are two different features of the TM-D710A/E that make it useful for EchoLink operation:

- The rig supports EchoLink “node memories”, for use when mobile. You can store the node number of your favorite EchoLink nodes in the transceiver’s memory. When you are in range of a local EchoLink node, you can use a short-cut command to have the rig send the correct DTMF sequence to connect the local EchoLink node to a distant EchoLink node.
- The rig makes it easier to set up your own EchoLink node by including a built-in PC interface. If you purchase the optional PC cable kit, you can connect the transceiver directly to the sound card and serial port of your PC to have it operate as an EchoLink node.

### 8.2.1 Sysop Mode

With the optional PG-5H cable kit, the TM-D710A/E can be connected directly to a PC to run the EchoLink software in Sysop mode. In Sysop mode, EchoLink forms a gateway between the Internet and a local RF channel, such as a simplex frequency or a nearby repeater. This allows other nodes on the EchoLink system to communicate with mobile or portable users in your area. Other EchoLink users can connect to your node, or local mobile and portable users can use the DTMF pad on their rigs to connect your EchoLink node to other nodes on the system. For details, refer to 8.5 Setting Up a Node Station (Link Station) with TM-D710A/E.

The TM-D710A/E connects to the sound card and serial port of your PC. The sound card connection handles the transmitted and received audio, and the serial-port connection takes care of PTT control and carrier detect. This allows the EchoLink software to key and un-key the TM-D710A/E’s transmitter, and to detect the presence of a signal received by the TM-D710A/E.

### 8.2.2 Making the Connections

The Kenwood PG-5H is a package of two different cables. Following the instructions in the TM-D710A/E Instruction Manual, connect the cables to the two jacks in the back of the transceiver and to the serial port and sound card jacks of your computer. The pink plug goes to the microphone input of the sound card, and the green plug goes to the sound card’s line out (or speaker out). The black 9-pin connector goes to the computer’s serial port.

Many modern computers have USB ports, but no serial ports. If your computer has no serial port, you will need to use either a serial-to-USB adapter cable, or a serial port option card. Either can be purchased from stores that sell computer accessories.

### 8.2.3 Transceiver Set-Up

You will need to put the transceiver into EchoLink Sysop mode. To set up the transceiver, hold down **[PF2]** while pressing the power button. Set up the link frequency on the “data band” (normally the left-hand side of the transceiver) and be sure it is enabled for “PTT” and “CTRL”.

## 8.2.4 Audio Adjustment

Proper adjustment of the audio levels is important for a good-quality link. You will need to adjust both the local transmit audio (from the computer to the transceiver), and the local receive audio (from the transceiver to the computer).

First, connect EchoLink to the Audio Test Server, by choosing Connect to Test Server from the Station menu. Then, choose Adjust Sound Device -> Recording from the Tools menu. Tune the TM-D710A/E to a local signal, or generate an on-air signal yourself using another rig. Watch the audio level meter at the bottom center of the EchoLink screen, and adjust the computer's Microphone level until audio peaks just begin to go into the red area.

You might find that you are unable to get enough audio level even with the Microphone level set to maximum. If that's the case, the audio output level from TM-D710A/E can be adjusted using the MCP-2A software, downloadable from the Kenwood Support Web site. Once you have the MCP-2A program up and running, go to the Data Terminal Adjustment section, and increase the PR1 Output Level (EchoLink Mode) from 3 to a higher value such as 6 or 7. After writing the new setting back to the transceiver, check and adjust the input (Recording) microphone level as before.

The next step is to adjust the audio from the PC to the rig. Adjust the Playback level so that your node's locally-transmitted audio sounds clean. Disconnect from the Test server, then choose Tone Generator from EchoLink's Tools menu to produce a zero-level tone into the TM-D710A/E. Choose Adjust Sound Device -> Playback from the Tools menu. While listening on a nearby receiver, adjust the Playback (Wave) level so that the tone sounds full but not distorted.

## 8.2.5 COS versus VOX

If you are running your node as a simplex link, the settings on the RX Ctrl tab (described above) should be fine; EchoLink will detect an incoming signal whenever the transceiver's squelch opens.

However, if the transceiver is tuned to the frequency pair of a local repeater, you might get better results by using EchoLink's VOX for carrier detect. When properly adjusted, this will avoid the extra delay imposed by the "tail" at the end of each of the repeater's transmissions. You may also want to enable EchoLink's Squelch Crash Anti-Trip feature to prevent incidental sounds such as courtesy tones from tripping the VOX. (See the EchoLink Help file for details on this feature).

An even better solution is to configure the repeater itself so that it transmits a sub-audible (CTCSS) tone only during the time that a signal is being received on its input. With this arrangement, you can set the TM-D710A/E for tone squelch instead of carrier squelch, and the rig will "open up" only during the time a station is speaking. This prevents the repeater's tail, courtesy tone, and other incidental sounds from being heard at the other end of the link, without affecting the repeater's operation for local users.

## 8.3 Using EchoLink only with Amateur Radio Equipment

If there is an EchoLink node within range of your transceiver, it is possible for you to access the node and communicate via your transceiver with distant stations using the node.

You can search for nearby nodes at the EchoLink site at <http://www.echolink.org>.

Access the EchoLink site and click on “Link Status” in the menu on the left side of the screen.

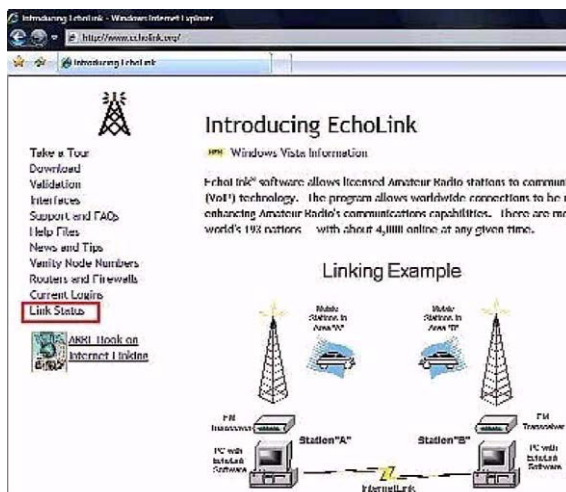


Figure 8-2 EchoLink Home Page

Input your current location information (or the location where you would like to search for a node).

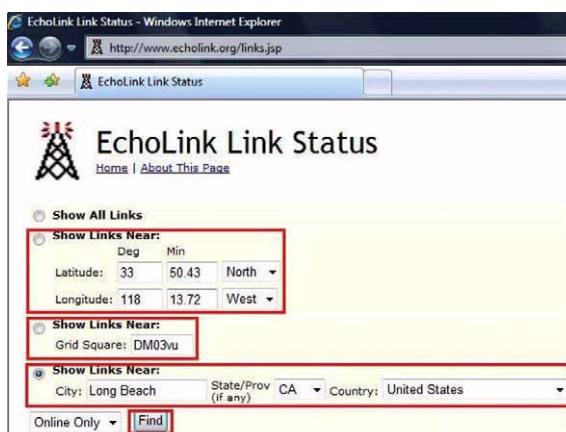


Figure 8-3 EchoLink Link Status Page

Input the longitude and latitude data, or the grid square locator, of your current location if you have this data. Or input your city name or the name of the largest city in your vicinity into “City”. Select the correct “State/Prov” and “Country” from the pulldown lists. Select the “Show Links Near:” button on the left side of the screen beside the information entered. Click the “Find” button. Nearby nodes will be displayed.

The screenshot shows the EchoLink Link Status website interface. The search filters are set to 'Show Links Near:' with Latitude: 33, Longitude: 118, and Grid Square: DM03ys. The 'Show Links Near:' dropdown is set to 'Online Only'. The search results table is titled 'Links Near Long Beach CA US (Online only)' and shows the following data:

Call	Description	Node	Latitude	Longitude	Grid Square	Dist (mi)	Freq (MHz)	Yrce	Prst	Hght (ft)	Ant	Last Status	Comment	Last Update (UTC)
W4DJK-L	Pelco Verdes, Ca. [316]	24058	33°42.00' N	118°13.00' W	DM03ys	9.9	448.200	121.0	04	640	8dB	Online	On @0743	3/21/2008 07:39
W4DJK-L	Restricted Access	24058	33°42.00' N	118°13.00' W	DM03ys	9.9	448.200	121.0	04	640	8dB	Online	On @0743	3/21/2008 07:41
W4DJK-L	Tustin CA (1)	256274	33°52.00' N	118°11.00' W	DM03ys	20.8	448.210	105.0	09	20	6dB	Conn	+HL-CORF at 0741	3/21/2008 07:39
W4DJK-L	KARVWA 1280.08 MHz (1)	281311	34°09.00' N	118°04.00' W	DM03ys	27.2	128.300		20	1280	8+dB	Conn	0=447790 at 0741	3/21/2008 07:41
W4DJK-L	Petaluma CA 438.150	14480	34°09.00' N	118°04.00' W	DM03ys	27.4	438.150		9	80	6dB	Online	On @0742	3/21/2008 07:41
W4DJK-L	D-CNT_148.770+ 794.8 (2)	218029	34°09.00' N	118°04.00' W	DM03ys	31.9	447.040		9	40	9+dB	Conn	+44783 at 0739	3/21/2008 07:39
W4DJK-L	Sequim	194010	38°12.00' N	124°04.00' W	DM03ys	35.2	442.050	107.2	03	440	3dB	Online	On @0741	3/21/2008 07:41
W4DJK-L	Winnella,CA 148.720	22951	38°12.00' N	124°04.00' W	DM03ys	37.2	148.720		09	40	3dB	Online	On @0742	3/21/2008 07:41
W4DJK-L	Vandell, CA	120484	34°07.00' N	118°04.00' W	DM03ys	35.1	448.910	105.0	9	10	3dB	Online	On @0733	3/21/2008 07:41
W4DJK-L	Southern California	223052	34°09.00' N	118°04.00' W	DM03ys	42.0	448.940		4	1200	9dB	Online	On @0740	3/21/2008 07:41
W4DJK-L	Riverdale CA (1)	181823	33°55.00' N	118°12.00' W	DM03ys	43.4	448.080	162.2	814	10	8+dB	Conn	+HL-CORF at 0638	3/21/2008 07:38
W4DJK-L	Simi Valley, CA	387980	34°16.00' N	119°04.00' W	DM03ys	44.7	547.300	107.2	08	10	6dB	Online	On @0737	3/21/2008 07:37
W4DJK-L	W. T. A. C. 148.800	34291	33°09.00' N	124°12.00' W	DM03ys	55.2	148.800	105.0	0	40	3dB	Online	On @0740	3/21/2008 07:41

Figure 8-4 Finding Nearby EchoLink Nodes

Selecting “Online Only” in the pulldown list to the left of the “Find” button results in search results being displayed only for those nodes currently connected to the EchoLink server.

“L” at the end of a node callsign, such as “W4DJY-L”, indicates a link station (simplex operation).

“R” at the end of a node callsign, such as “W5DJY-R”, indicates a repeater station (semi-duplex operation).

The frequency of the node is indicated in **Freq (MHz)**. Other node data is included too, such as access tone frequency, transmit power and height/ gain/ pattern for its antenna.

When “In Conference \*xxxxxxx\*” is indicated under **Description**, the node is presently already connected to a conference (a round-table QSO room) called “xxxxxxx”.

Once you verify that there is a node that may be accessible, you can verify access possibilities. Configure the frequency of your transceiver for the node frequency. If a tone access frequency (e.g. 77.0 Hz) is shown, configure this frequency in order for the transceiver to send an encode tone. Before transmitting, carefully listen on the frequency and first verify whether anybody is already communicating with the node.

**Note:** We recommend that you verify the state of nodes using the official EchoLink site via the Internet. The information presented is kept up-to-date almost in real time.

When no communication is heard, check if it’s possible to communicate with the node. Press the **PTT** switch and use the keypad to transmit the “08” DTMF code (command for state verification). When the node is available to use, a signal will be returned from the node. A “Not connected” announcement means the node is not connected to another station or a conference. An “EchoLink disabled” announcement means the EchoLink software is inactive so you cannot use the node. When there is no reaction at all from the node, it is possible that the node is not working or is outside communication range. In that case, try verifying another node.

### 8.3.1 Basic Commands used for EchoLink

Command	Description	Default
Connect	Connects to a station on the Internet, based on its node number.	num
Connect by Call	Connects to a station on the Internet, based on its callsign.	C+call+#
Disconnect	Disconnects the station that is currently connected. If more than one station is connected, disconnects only the most-recently-connected station.	#
Disconnect All	Disconnects all stations.	##
Reconnect	Re-connects to the station that most recently disconnected.	09
Status	Announces the callsign of each station currently connected.	08
Play Info	Plays a brief ID message.	*
Query by Call	Looks up a station by its callsign, and reads back its node number and status.	07+call+#
Query by Node	Looks up a station by its node number, and reads back its callsign and status.	06+num

These commands are a representative set of basic commands. There are many commands in addition to these. For details, refer to the EchoLink site at [http://www.echolink.org/Help/dtmf\\_functions.htm](http://www.echolink.org/Help/dtmf_functions.htm).

**Note:** Each node owner has the option of changing the basic commands, particularly to avoid conflicts with other repeater functions. Before using EchoLink over a nearby repeater, it is a good idea to try to contact the node owner, or someone else familiar with the node, to see if there are any special operational rules.

### 8.3.2 EchoLink Memory Function of TM-D710A/E

You use this function for accessing nearby relay stations by using DTMF codes from a TM-D710A/E or by transmitting a control command to the relay station. It is possible to register a DTMF code up to a maximum of 8 digits in an EchoLink private DTMF memory (10 channels all together).

#### 8.3.2.1 Storing to an EchoLink Memory

1. Select Menu 204.
2. Turn the **Tuning Control** to select an EchoLink memory channel from [EL0] to [EL9].
3. Press the **Tuning Control**.
  - The name input screen will appear.
4. Enter the EchoLink memory name.
  - Enter the callsign of the target station that you want to call via EchoLink and the name of the conference or the control command. Conference rooms allow you to have roundtable QSOs.
5. Press the **Tuning Control**.
  - The code input screen will appear.
6. Enter the EchoLink code.
  - Enter the target station that you want to call via EchoLink and the node number of the conference or the DTMF code, such as a control command.

### 8.3.2.2 Transmitting with an EchoLink Memory

1. Press the **PTT** switch to transmit.
2. Press the **Tuning Control** while transmitting.
  - The transceiver enters the EchoLink memory channel selection mode.
3. Turn the **Tuning Control** while the **PTT** switch is pressed to select the EchoLink memory channel on which you want to transmit.
4. Press the **Tuning Control** while the **PTT** switch is pressed.
  - Until transmission of the EchoLink code ends, the transceiver remains in transmit mode even if you stop pressing the **PTT** switch.

#### Useful Tips:

- In Step 2 above, if before pressing the **Tuning Control**, the **[C]** key on the microphone is pressed, then the DTMF code for the EchoLink “Connect by Call” function is transmitted.  
For example, in the case of JA1YKX: “C” “51 21 10 93 52 92 #” (“#” will be added at the end automatically).
- In Step 2 above, if before pressing the **Tuning Control**, the **[0]** and **[7]** keys on the microphone are pressed, then the DTMF code for the EchoLink “Query by Call” function is transmitted.  
For example, in the case of JA1YKX: “0” “7” “51 21 10 93 52 92 #” (“#” will be added at the end automatically).
- When only the EchoLink memory name is stored, the DTMF code for the EchoLink “Connect by Call” function is transmitted.  
For example, in the case of JA1YKX: “C 51 21 10 93 52 92 #” (“C” will be added at the beginning and “#” will be added at the end automatically).

**Note:** When converting a callsign to a DTMF code, when a character is encountered other than the alphanumeric characters in Table 8-1, such as “-”, “/”, etc., the DTMF conversion halts at the letter prior to the character not found in the table.

**Table 8-1 Callsign/ DTMF Code Conversion Table**

1st \ 2nd	1	2	3	4	5	6	7	8	9	0
0	1	2	3	4	5	6	7	8	9	0
1	Q	A	D	G	J	M	P	T	Y	
2	Z	B	E	H	K	N	R	U	X	
3		C	F	I	L	O	S	V	Y	

- Speed of DTMF transmission from an EchoLink memory can be changed between FAST and SLOW using Menu 520. The default is FAST. When a node does not decode your DTMF signal correctly, configure the SLOW setting to increase chances of the node correctly decoding your DTMF signal.



## 8.4 Using EchoLink only with a Computer

If the EchoLink software is installed on your personal computer, without using any transceiver, it is possible to communicate as a single user directly via your personal computer. In addition, when you set up a link station, by connecting a TM-D710A/E and a personal computer, we recommend you make it possible to use EchoLink software in Single User mode as an advanced preparation.

### 8.4.1 Downloading EchoLink Software

Access the EchoLink site (<http://www.echolink.org>) and click “Download” in the menu on the left side.

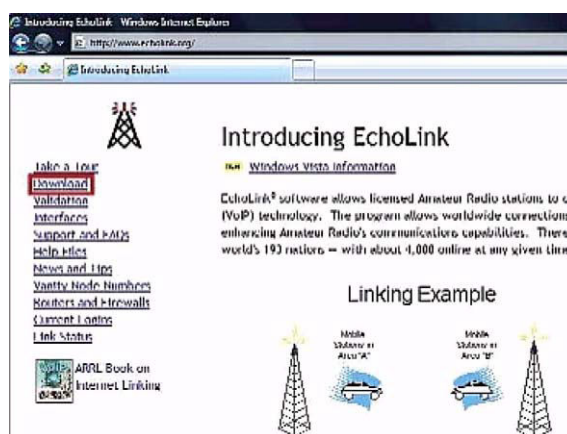


Figure 8-5 EchoLink Software Download Access Page

### Download EchoLink

EchoLink® software is offered free of charge to licensed Amateur Radio operators. Please note that **you must hold a valid Amateur Radio license** in order to use EchoLink. Proof of license is required if you wish to use it; see [Authentication](#) for more information.

Please register by entering your callsign and e-mail address below. Then click the Submit button.

Callsign:   
 E-Mail Address:

Figure 8-6 Registering Prior to Downloading Software

The Download EchoLink page will appear on your screen. Enter your callsign and email address, and then click the “Submit” button.



Figure 8-7 EchoLink Software Download Link Page


The Download EchoLink page with a download link will appear. Double click “Click Here to Download”. The download will begin.



Figure 8-8 EchoLink Software Download Security Warning

Select the appropriate folder and save the file to this folder.

### 8.4.2 Installing EchoLink Software

Click the icon  of the file you downloaded called “EchoLinkSetup\_X\_X\_XXX.exe” (X\_X\_XXX is the version number), and then click the “Run” button. Follow the procedure presented on screen. When installation is finished, “InstallShield Completed” will appear. Then click the “Finish” button.

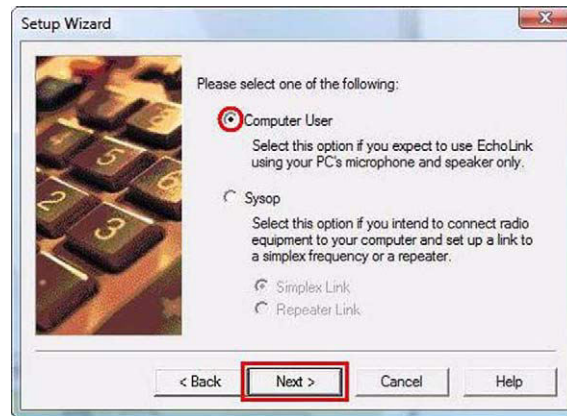
### 8.4.3 Starting EchoLink Software

Start EchoLink software by clicking the EchoLink icon  which was created by the installation.



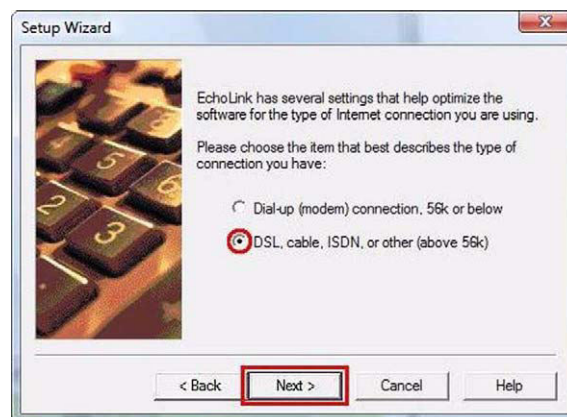
Figure 8-9 EchoLink Setup Wizard Window

The Setup Wizard window will appear with a welcome message.



**Figure 8-10 EchoLink User Type**

Select “Computer User” and then click the “Next >” button.



**Figure 8-11 Type of Connection**

Unless you are using an analog modem (56k or less) to dial up to an ISP (Internet Service Provider), select “DSL, cable, ISDN, or other (above 56k)” and then click the “Next >” button.



**Figure 8-12 EchoLink Personal Information Window**

Continue configuration by entering your personal information, and then clicking the “Next” button.

**Note:** Do not forget the password that you entered in the Password edit box. Because you will need the password for a later process in EchoLink.



Figure 8-13 Setup Complete Window

Click the “Finish” button.



Figure 8-14 Validation Advisory Window

When validation of your callsign is necessary, a validation advisory window will appear. Click the “OK” button and proceed to the Validation procedure.

### 8.4.4 Validation of EchoLink User’s Callsign

Begin the EchoLink Validation process by clicking “Validation” in the menu on the left side of the EchoLink home page.

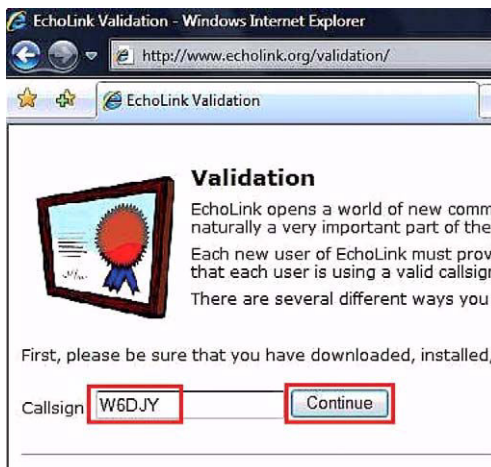
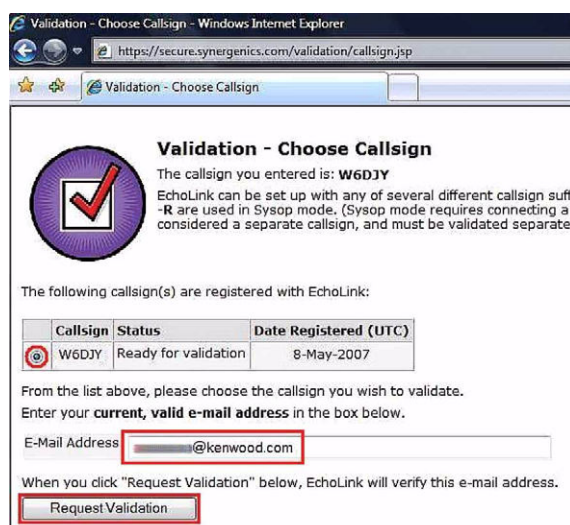


Figure 8-15 EchoLink Validation Page

Enter your callsign and click the “Continue” button. The callsigns available for validation will appear.



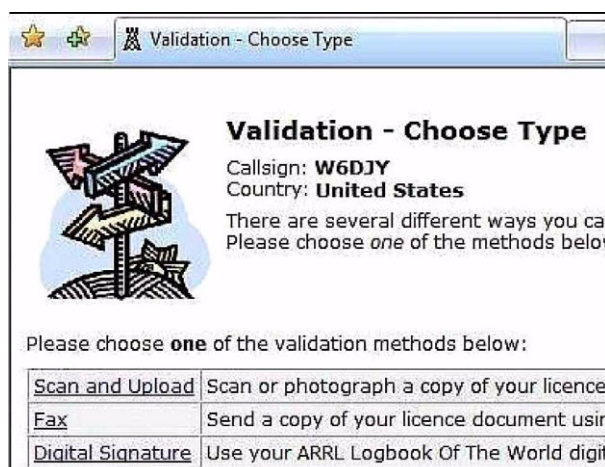
**Figure 8-16 Callsigns Available Page**

When the software was configured via the Setup Wizard as a Computer User, only your callsign (without -L or R at end of callsign) is shown to represent a single user. Confirm the callsign is selected (small black circle to left of callsign). This callsign becomes the validation object. Enter your email address and click the “Request Validation” button.



**Figure 8-17 Confirmation of Sending the Validation Procedure**

The message in Figure 8-15 will appear and the URL that has the Validation procedure for your callsign will be sent to the email address you enter. Click the URL in the email that you receive.



**Figure 8-18 License Submission Page**

Click the method that you want to use to validate your callsign. A valid amateur radio license is mandatory to complete the validation.

### 8.4.4.1 Scan and Upload

Use a digital camera or scanner to create a graphics file of your license. Click “Scan and Upload”. Enter the necessary information and upload the license file.

**Note:** Be sure to follow the tips below:

- File must be .jpg, .gif, .png or .tiff format.
- Size of file must be less than 5 MB.
- Callsign and other information on the license image must be legible.

When upload completes, a screen indicating “Validation-Upload” appears. Another message appears (“Processing...Your validation request will now...”) that indicates the request for validation has been accepted.

The process for validation is done by a support team of volunteers. When the validation process is completed, you will receive an email that contains the notice of approval of validation. The email will indicate “Validation approved for...”. Typically, the validation process usually completes within 24 hours.

### 8.4.4.2 Fax

Click “Fax”. Send your amateur radio license by fax to the telephone number presented on the page. In this case, you will not receive a reply by fax. When the validation process is completed, you will receive an email that contains the notice of approval of validation from the support team. After receiving validation, the list of callsigns should appear on the EchoLink screen within a few minutes.

### 8.4.5 Startup in Single User Mode

Connect a PC headset (or microphone and speaker) to your computer and start the EchoLink software. The “Tip of the Day” window will appear.



Figure 8-19 EchoLink “Tip of the Day” Window

Stations that are currently connected to EchoLink will appear on the screen. This screen will automatically update as changes occur.

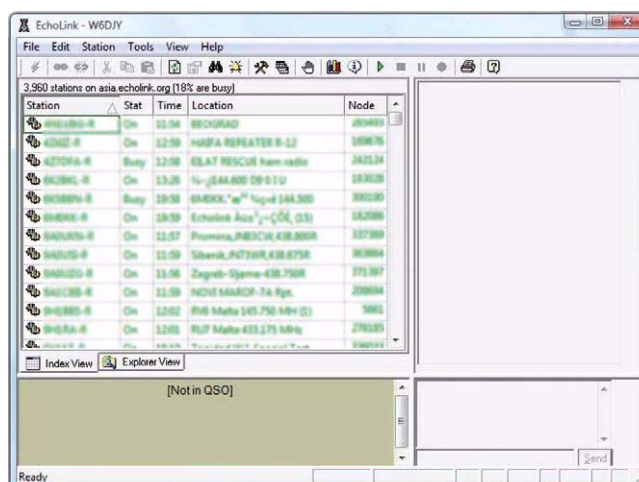


Figure 8-20 EchoLink Startup Window

## 8.4.6 Setting Audio Levels

Before starting to make QSOs, first connect to the Test Server and configure the correct receive volume.

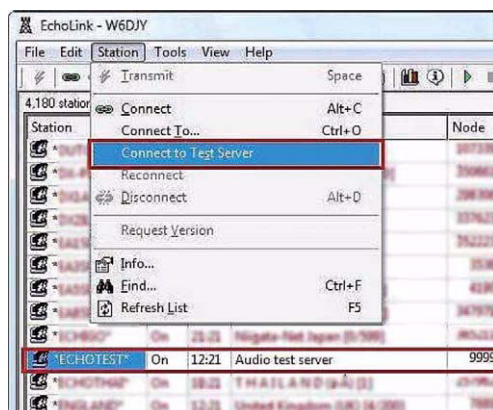


Figure 8-21 Connecting to EchoLink Test Server

There are two ways to connect to the Test Server as follows:

- Select “Connect to Test Server” from the **Station** pulldown menu.
- Select the \*ECHOTEST\* conference and click the “Connect” button (upper left corner of screen).

“Connecting to \*ECHOTEST\*...” will appear. Once connected, you will hear an announcement from the test server that begins: “Welcome to the EchoLink Test Server...”.

### 8.4.6.1 Adjusting Receive Volume

Adjust the receive volume of the announcement audio from the test server. Select “Adjust Sound Device” > “Playback...” from the **Tools** pulldown menu.

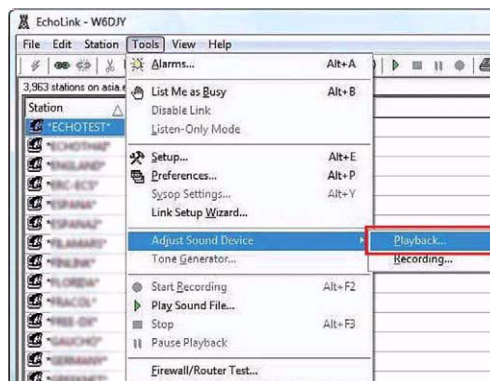


Figure 8-22 Receive Volume Menu Selection

Adjust the appropriate volume control using the test server announcement.

### 8.4.6.2 Adjusting Transmit Level

Adjust the level of the transmit audio that is sent from the microphone to the test server. Select “Adjust Sound Device” > “Recording...” from the **Tools** pulldown menu.

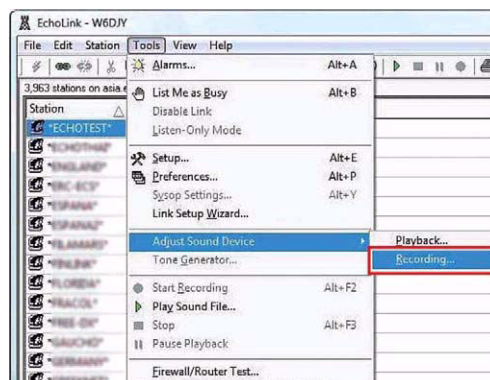


Figure 8-23 Transmit Level Menu Selection

To transmit, use the “Transmit” button on the EchoLink software screen or the **[Space]** key on your computer keyboard. Press the “Transmit” button or **[Space]** key once to activate the transmit mode; press it again to return to receive mode.



Figure 8-24 Adjusting Transmit Level

While transmitting, speak into the microphone using a normal level of voice. After returning to receive, your spoken audio will be repeated back by the test server. Adjust the microphone level control until the returned audio sounds best. Transmit to the test server and listen to the returned audio a couple of times. When you have completed setting the input level, press the “Disconnect” button on the EchoLink software screen to disconnect from the test server.



## 8.4.7 Connecting with a Station

Station	Stat	Time	Location	Node
JA0	Busy	13:29		
JA1	Busy	13:25	In Conference * * *	
JA1YKX	On	13:30	Yokohama, JAPAN	340054
JA2	On	13:28	JAPAN	
JA3	Busy	13:30	In Conference * * *	
JA4	On	21:57	City	
JA6	Busy	13:30	In Conference * * *	

Figure 8-25 Connecting with a Station

Connected stations are listed in the Station List of the **Index View** tab on the EchoLink software screen. The stations are listed in order of repeater stations, link stations, single user stations (PC users) and conferences in the chart. First, choose a single user station and connect to it. If connecting to a repeater station, link station or conference, before pressing the space bar to transmit, monitor sufficiently to understand who else may already be connected.

## 8.4.8 Port Forwarding (Router Configuration)

With older versions of EchoLink, router configuration and understanding port forwarding was always the source of most confusion for new users. With the current version of the software, in many cases it is no longer necessary to make firewall adjustments.

The latest version of EchoLink software, Ver. 2.0.908 was released in February 2007. The feature that avoids many firewall issues is included in this version. The EchoLink server support for this feature began in September 2007. You can read more on this subject at

<http://www.echolink.org/firewall-friendly.htm>.

**Note:** Ver. 2 and later of EchoLink software allows connections to the conference server and EchoLink node stations that are using EchoLink Ver. 2 or newer software without configuring port forwarding. Previously, it was necessary to open TCP 5200/ UDP 5198-5199 ports. However, if the stations that you want to connect to are still using Ver. 1.x EchoLink software, then it will still be necessary for you to configure port forwarding at your location as before. This may also be necessary when using more restrictive firewalls.

## 8.4.9 Firewalls

When you cannot connect to a station while in Single User mode (PC single unit) in spite of having installed an up-to-date version of EchoLink software, there is a possibility that the TCP 5200/ UDP 5198-5199 ports that EchoLink uses are being blocked by a firewall and the Windows security software. If you suspect this, follow the procedure below.

### 8.4.9.1 Windows Firewall

In Windows, select Start > Settings > Control Panel > Security Center > Windows Firewall > Exceptions. Verify that "EchoLink" is included in the program list and the checkbox is checked.

### 8.4.9.2 Security Software Firewall

Examine the Help file of your security software and configure the security software so that EchoLink software is able to connect to the Internet. If necessary, consult with the support group of the manufacturer of the security software to be certain the EchoLink software is not being blocked from accessing the Internet.

## 8.5 Setting Up a Node Station (Link Station) with TM-D710A/E

With the optional PG-5H cable kit, the TM-D710A/E can be connected directly to a computer to run the EchoLink software in Sysop mode. In Sysop mode, EchoLink forms a gateway between the Internet and a local RF channel, such as a simplex frequency or a nearby repeater. This allows other nodes on the EchoLink system to communicate with mobile or portable users in your area. Other EchoLink users can connect to your node, or local mobile and portable users can use the DTMF pad on their transceivers to connect your EchoLink node to other nodes on the system.

The TM-D710A/E connects to the sound card and serial port of your computer. The sound card connection handles the transmitted and received audio, and the serial-port connection takes care of PTT control and carrier detect. This allows the EchoLink software to key and un-key the TM-D710A/E's transmitter, and to detect the presence of a signal received by the TM-D710A/E.

### 8.5.1 Connecting a PC

The Kenwood PG-5H is a package of two different cables. Following the instructions in the TM-D710A/E Instruction Manual, connect the cables to the two jacks on the back of the transceiver and to the serial port and sound card jacks of your computer. The pink plug goes to the microphone input of the sound card, and the green plug goes to the sound card's line out (or speaker out). The black 9-pin connector goes to the computer's serial port.

Many modern computers have USB ports, but no serial ports. If your computer has no serial port, you will need to use either a USB-to-serial adapter cable, or a serial port option card. Either can be purchased from stores that sell computer accessories.

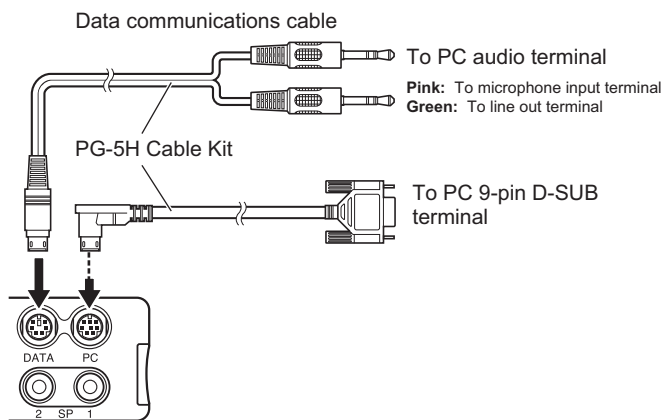


Figure 8-26 Connecting a TM-D710A/E and a PC

## 8.5.2 Configuring EchoLink Software for a Link Station

If your computer is already configured for use in Single User mode of EchoLink, you can easily set up a link station. Select “Setup...” from the **Tools** pulldown menu to open the **System Setup** window.

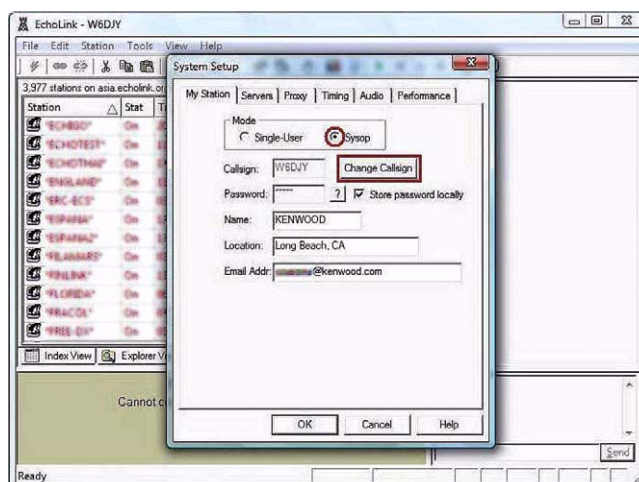


Figure 8-27 System Setup Window

In the **My Station** tab, change the configuration in the **Mode** frame from “Single-User” to “Sysop”. That is, select the **Sysop** radio button. Click the “Change Callsign” button.

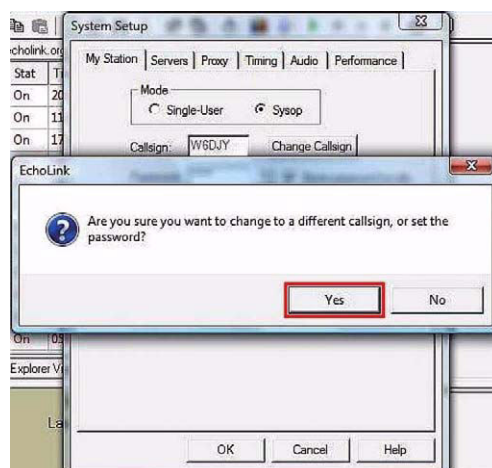


Figure 8-28 Callsign Change Confirmation

A confirmation message appears that asks you to confirm that you want to change callsign. Click the “Yes” button.

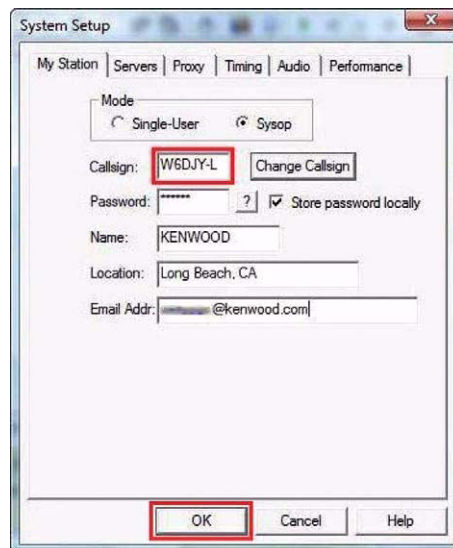


Figure 8-29 Changing Callsign to be a Link Station

Enter in the **Callsign** edit box your callsign with -L at the end such as W6DJY-L. Click the “OK” button.

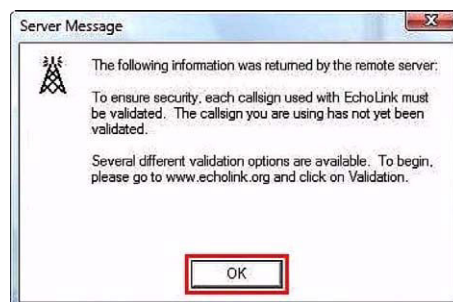


Figure 8-30 Validation Required Message

A server message will display that indicates the new callsign must be validated. You must close the EchoLink software and validate this new callsign as a link station.

**Note:** As shown in the example below, the link station callsign is treated as a different station even if the same callsign (without the -L) has been validated previously. In the case of “W6DJY”, the EchoLink software differentiates between “W6DJY” (single user), “W6DJY-L” (link station) and “W6DJY-R” (repeater station), and different node numbers will be assigned. Because of this, you must validate a link station (or repeater station) callsign by going to <http://www.echolink.org/validation> and following the validation procedure.

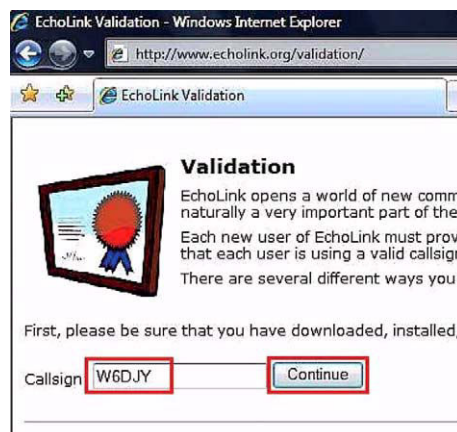


Figure 8-31 EchoLink Validation Page

Enter your callsign and click the “Continue” button. The callsigns available for validation will appear.

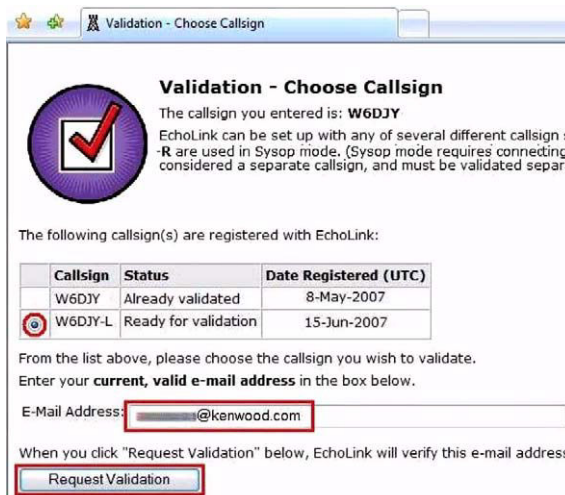


Figure 8-32 Callsigns Available Page

Confirm the callsign is selected (small black circle to left of callsign). This callsign becomes the validation object. Enter your email address and click the “Request Validation” button. In the same way as the validation you did for Single User mode, the URL that has the Validation procedure for your callsign will be sent to the email address you enter. Click the URL in the email that you receive. The License Submission Page shown in Figure 8-33 will appear.

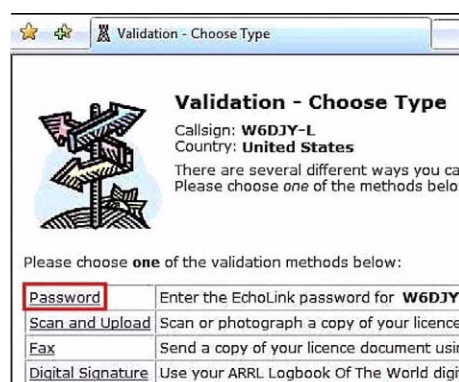


Figure 8-33 License Submission Page

Click “Password”. The page shown in Figure 8-34 appears.

Figure 8-34 Password Entry Page

Select the new link station, enter the password you configured during the first validation process and click the “Continue” button. “Verifying password...” will display, and then “Password verified” will display within 1 minute.

Figure 8-35 Password Verification Page

This is the completion of the Validation procedure of a callsign for a link station. Re-start the EchoLink software.

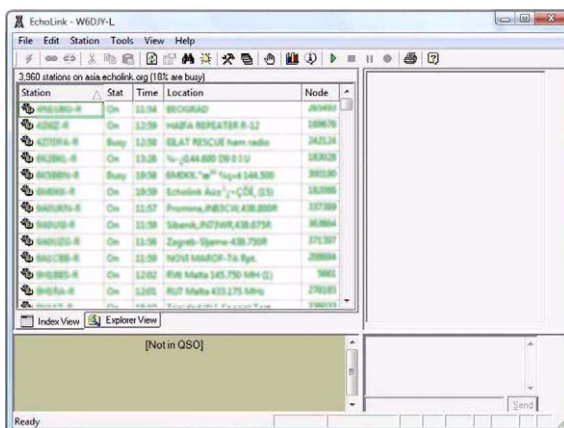


Figure 8-36 EchoLink Startup Window

Your link station callsign will be displayed at the top of the screen in the Title bar and stations connected to EchoLink are shown. The software will already be connected as a link station. Next, select “Sysop Settings” from the **Tools** pulldown menu and open the **Sysop Setup** window. Click the **RX Ctrl** tab.

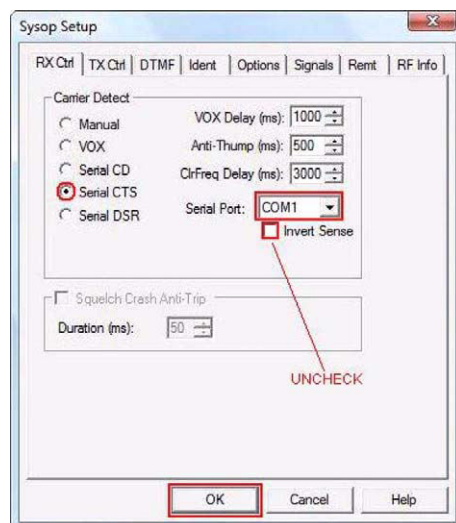


Figure 8-37 Sysop Setup Window: RX Ctrl Tab

Select the “Serial CTS” radio button in the **Carrier Detect** frame. Configure the “Serial Port” dropdown list for the port used for EchoLink. Confirm the correct serial port to use by examining your computer configuration; the correct port depends on your particular computer.

If MCP-2A is installed, usually this software uses the same port as EchoLink software. When there is only one COM port on a computer, it is usually COM1. If a USB-serial conversion cable is being used, the correct COM port number may be COM2 or larger.

Do not check the **Invert Sense** check box for the TM-D710A/E and TM-V71A/E transceivers. This is to set the Output Logic of Squelch Control from the transceiver to “Active High”. Refer to Step 3 of Parameter Settings in Section 8.5.4 Using MCP-2A to Configure TM-D710A/E. It is not necessary to check the **Squelch Crash Anti-Trip** check box either. Next, click the **TX Ctrl** tab.

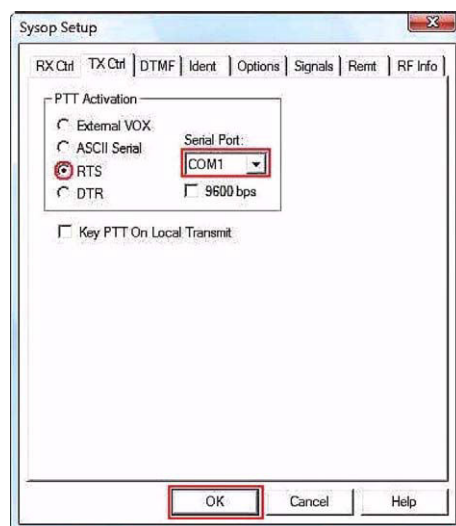


Figure 8-38 Sysop Setup Window: TX Ctrl Tab

Select the **RTS** radio button in the **PTT Activation** frame. The “Serial Port” will be the same port as configured in the **RX Ctrl** tab. It is not necessary to check the **9600bps** or **Key PTT on Local Transmit** checkbox. Next, click the **DTMF** tab.

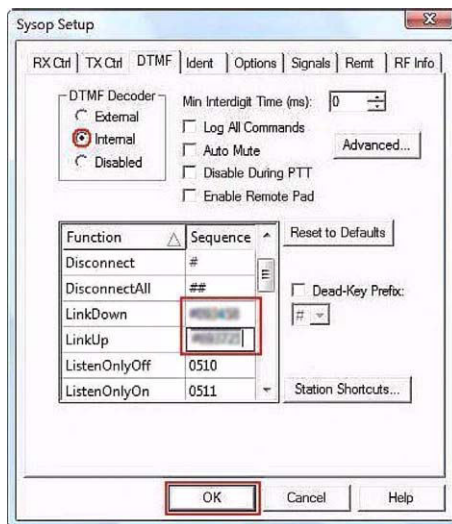


Figure 8-39 Sysop Setup Window: DTMF Tab

Select the **Internal** radio button in the **DTMF Decoder** frame. In order for you to administer your link station, we recommend that you input a DTMF command for LinkDown and LinkUp for the EchoLink server. Keep these commands private to prevent any unauthorized person other than the link station manager from gaining administrative control of the station. Click the **Ident** tab.

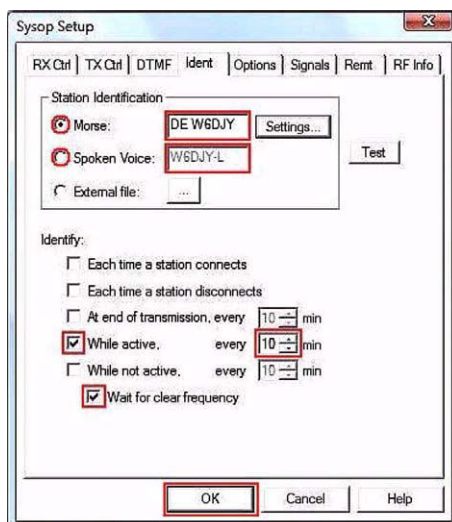


Figure 8-40 Sysop Setup Window: Ident Tab

Configure in the **Station Identification** frame the type of station ID that will be automatically transmitted for identification purposes. Choose the correct form of over-the-air legal ID for your local area. The callsign entered here does not necessarily need to match the callsign used for your EchoLink login. If the “Spoken Voice” radio button is selected, the EchoLink software uses speech synthesis to announce the station callsign. If the “Morse” radio button is selected, an ID will be sent by Morse code.

Check the While Active checkbox and configure the ID interval for sending the ID. If the **Wait for clear frequency** checkbox is checked, the ID will only be transmitted after the frequency becomes clear. Next, click the **Options** tab.



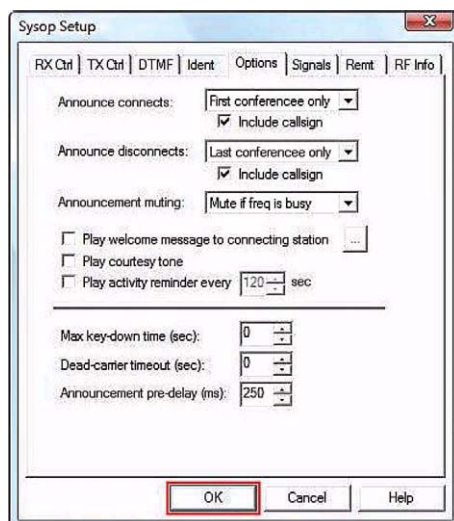


Figure 8-41 Sysop Setup Window: Options Tab

The initial settings are fine to use. No changes are necessary. Finally, click the **RF Info** tab.

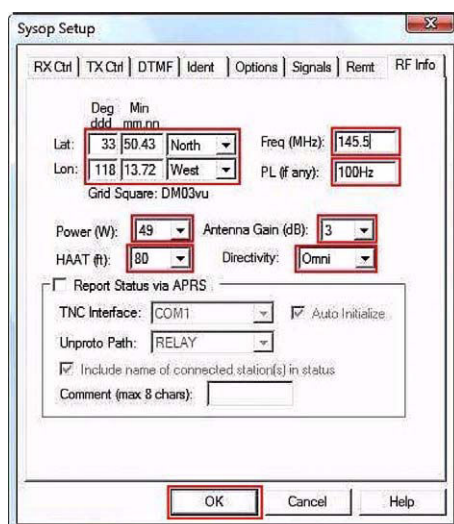


Figure 8-42 Sysop Setup Window: RF Info Tab

At this point, you must enter your link station information. While initially experimenting and setting up your station, it's best not to enter this information. This information is sent to the EchoLink server. After you disconnect from the EchoLink server, this information will continue to be public via the server for some time. Heed this warning!

This is the information that you can enter:

**Lat:** Enter latitude.

**Lon:** Enter longitude.

**Freq:** Enter operational frequency.

**PL (if any):** Enter Tone frequency for access (e.g. the CTCSS frequency configured in a TM-D710A/E).

**Power (W):** Select from the dropdown list the power closest to your transmit power.

**HAAT (ft):** Select from the dropdown list the height closest to your antenna height.

**Antenna Gain (dB):** Select from the dropdown list the gain closest to your antenna gain.

**Directivity:** Select from the dropdown list the direction of maximum antenna gain. For an omnidirectional antenna, select "Omni".

**Report Status via APRS:** Do not check.

When operational frequency, Tone frequency, etc. are modified, after you connect to the EchoLink server, all modified information will be transferred at one time. Click the "OK" button to complete the settings.

### 8.5.2.1 Finding your Position (Latitude/ Longitude Coordinates)

Besides using a GPS receiver, it is possible to use web sites on the Internet and software to acquire your latitude and longitude coordinates.

#### ● Using Google Earth

Google Earth allows you to search for your position by typing your street address into the Google Earth search box. Once Google Earth zooms into your vicinity, move the mouse cursor to rest exactly on your position on the map. At the bottom of the screen, you can read your latitude and longitude: e.g. "33° 50' 25.80" N 118° 13' 43.26" W". This indicates a North latitude of 33 degrees 50 minutes 25.80 seconds and West longitude of 118 degrees 13 minutes 43.26 seconds. EchoLink software does not use the minutes/seconds format. The minutes/ seconds values must be converted into a decimal value with two digits following the decimal point by using the formula 1 minute = 60 seconds. Therefore, the Google Earth values convert to 33 degrees 50.43 minutes North and 118 degrees 13.72 minutes West.

In the **RF Info** tab in the **Sysop Setup** window, enter as follows:

Lat 33 50.43 North

Lon 118 13.72 West

Up to this point, basic settings for configuring a link station when using a TM-D710A/E have been discussed. For more detailed configuration information, refer to the Help files in the EchoLink software. Furthermore, adapt the specified configurations for your environment so you can enjoy comfortably operating a link station.

### 8.5.3 Configuring a TM-D710A/E for a Link Station

#### 8.5.3.1 What is TM-D710A/E EchoLink Sysop Mode?

EchoLink Sysop mode is the mode used when connecting the TM-D710A/E with a personal computer and operating as a base station at an EchoLink relay station (link station). In EchoLink Sysop mode, the computer interfaces its RTS and CTS hardware flow control signals to the PKS (transmit control signal input from the computer) and SQC (squelch control signal output to the computer) terminals respectively on the TM-D710A/E.

The operation band is the data band as selected via Menu 517 regardless which band you transmit on by pressing the **PTT** switch or currently have selected.

Use a PG-5H cable kit to connect a personal computer installed with EchoLink software to the TM-D710A/E as shown in Figure 8-43.

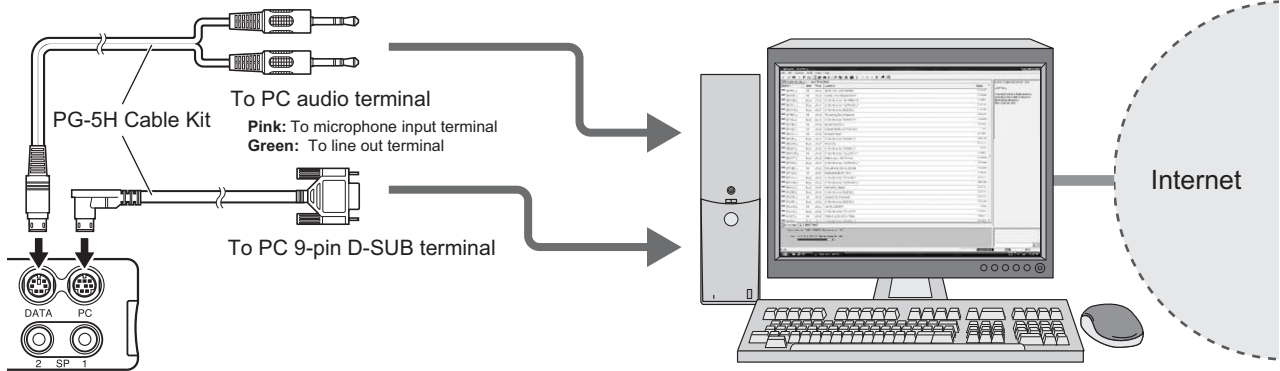




Figure 8-43 Computer to TM-D710A/E Connections

1. Turn the power OFF.
2. Hold **[PF2]** down and turn the power ON.

Whenever Steps 1 and 2 are done, the EchoLink Sysop mode turns On and Off.

**Note:**

- ◆ When EchoLink Sysop mode is On, the  icon appears.
- ◆ When an audio signal is output from the data terminal to the personal computer, the  icon blinks.
- ◆ When the personal computer has no RS-232C ports, then use a USB-to-serial conversion cable.
- ◆ When EchoLink Sysop mode is On, the transceiver cannot communicate with MCP-2A Programming Software. Before using MCP-2A, turn EchoLink Sysop mode Off.

### 8.5.4 Using MCP-2A to Configure TM-D710A/E

1. Select “Menu” > “Aux” from the **Edit** pulldown menu. Confirm “1200” bps is configured for “Data Speed [bps]”. Data Speed can also be confirmed using Menu 518 on the transceiver.
2. Configure “SQC Output Source” for “SQL” in the dropdown list. This is the same as Menu 520 on the transceiver.

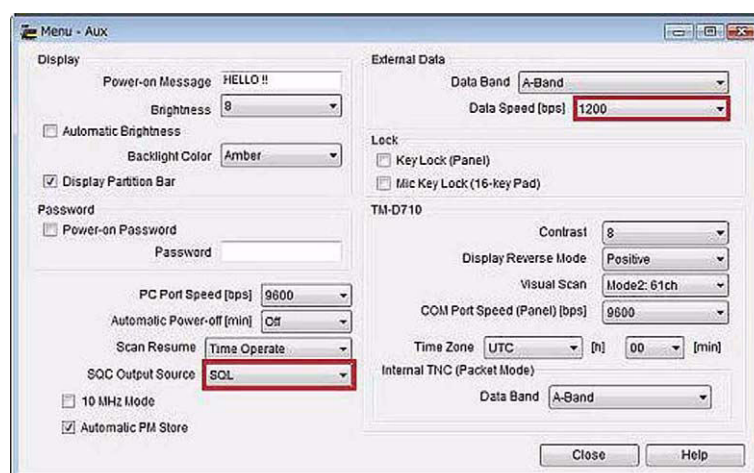


Figure 8-44 MCP-2A Aux Window: Data Speed and SQC Output Source

3. Select “Menu” > “Transmit/Receive” from the **Edit** pulldown menu. When using CTCSS or DCS for the purpose of preventing extraneous signals or noise from being fed into the Internet from a link station, configure “EchoLink RX Monitor” for “Busy Only” in the dropdown list. When EchoLink Sysop mode is used, all signals received on the data band are output from the speaker regardless whether CTCSS or DCS has matched; whereas, only those signals that match CTCSS or DCS are output from the data terminal.

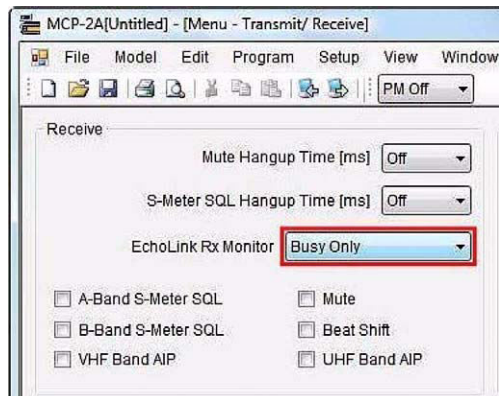


Figure 8-45 MCP-2A Transmit/Receive Window: EchoLink RX Monitor

4. Select “Data Terminal” from the **Edit** pulldown menu. Configure “SQC Output Logic” for “High” in the dropdown list so that a false Busy state is never detected, even when the transceiver is turned OFF.

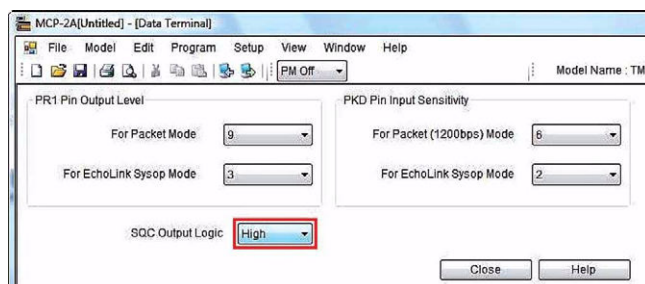


Figure 8-46 MCP-2A Data Terminal Window: SQC Output Logic

**Note:** In the **Sysop Setup** window in EchoLink software, do not check the **Invert Sense** checkbox in the **RX Ctrl** tab. Refer to 8.5.2 Configuring EchoLink Software for a Link Station.

5. Select “Data Terminal” from the **Edit** pulldown menu. If the audio level adjustment range on your computer is not sufficient, configure “PR1 Pin Output Level” to adjust the AF output level to the computer. Also, configure “PKD Pin Input Level” to adjust AF input sensitivity that will vary the AF signal level fed into the transceiver. These levels can be varied using steps of approximately 6 dB.

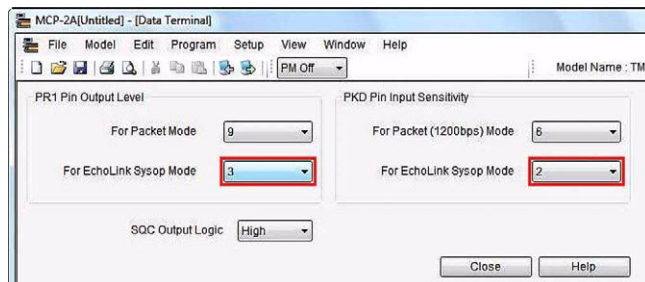


Figure 8-47 MCP-2A Data Terminal Window: AF Level Adjustments

**Note:**

- ◆ Steps 3 through 5 above can only be done using MCP-2A.
- ◆ Older versions of MCP-2A may not have menu items described above. In this case, upgrade your MCP-2A to version 3.10 or newer.

## 8.5.5 Checking your Link Station

Here are the steps to follow to check out your link station:

- Connect a dummy load to the TM-D710A/E antenna connector in place of the antenna. This will prevent your transmitted signal from interfering with others while you prepare the link station for use.
- Turn ON the power to TM-D710A/E while holding down **[PF2]** to place TM-D710A/E in EchoLink Sysop mode.
- Start the EchoLink software.
- Pressing the **PTT** switch on another transceiver configured to operate on the TM-D710A/E frequency should cause the EchoLink software to show a Busy indicator.
- Connect to the test server the same as in Single User mode. Adjust receive and transmit levels by using another transceiver in place of the headset used in Single User mode.
- Adjust the modulation of TM-D710A/E to produce an adequate level from the computer to the test server. Adjust the deviation of TM-D710A/E such that the signal received from the test server via the computer is adequate.
- The **[Ctrl] + [F10]** keys on a PC can be used to manually toggle the transceiver's PTT on and off, to test the cable connections and TX Ctrl configuration.
- After completing the above adjustments, try transmitting DTMF signals from another transceiver. Verify that the DTMF signal is decoded correctly on the screen of the EchoLink software.
- Disconnect from the test server when the verification is complete.
- Transmit DTMF signals from another transceiver to verify commands such as Connect/ Disconnect or LinkUp/ LinkDown are working correctly.

After completely verifying all operations, your node setup is done. Enjoy operating EchoLink with your TM-D710A/E.

# 9 MCP-2A Memory Control Program (for use with TM-V71A/E, TM-D710A/E, RC-D710)

MCP-2A is software designed for use with your personal computer to edit and manage memory channel and menu data for TM-V71A/E, TM-D710A/E or RC-D710. The current version of MCP-2A retains features from earlier versions of MCP series software that received favorable comments from customers, and introduces new features to substantially raise the overall software performance. For convenience of customers, Kenwood distributes the software via our corporate web site as a free service for our customers.

This version updates and improves the user interface to allow a user to view much information at one time in a single window. A new file import/ export function has been added that can be used to import the ARRL-issued TravelPlus for Repeaters™ information. Also, the file format of the new MCP-2A is compatible with the older version of software.

Create, manage and edit memory channel and menu data for TM-V71A/E, TM-D710A/E and RC-D710 to maximize your enjoyment of these transceivers. Furthermore, using the MCP-2A software tool makes exchanging this data among transceivers easy. You will need a PG-5G or PG-5H cable kit available as an option to use MCP-2A.

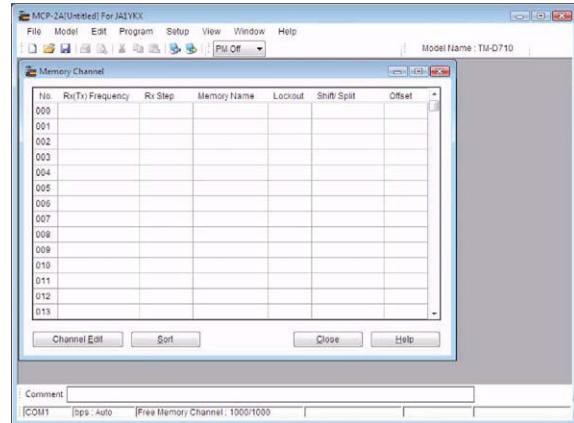


Figure 9-1 MCP-2A Memory Channel Window

## 9.1 Downloading and Installing MCP-2A

1. Check that the specifications for your computer meet the following that are necessary to use MCP-2A.

Table 9-1 MCP-2A Computer Specifications Table

Personal Computer	Required Specification
Operating System	Windows 2000 (SP4 or later), Windows XP (SP2 or later), Windows Vista (32-bit version)
CPU	Pentium II 450 MHz or faster, or CPU recommended by OS
Memory	Larger than OS recommended capacity
Run-time Environment	.NET Framework 2.0 or later (see Notes below)
Communication Port	Serial port available (COM1 to COM20). (see Notes below)

**Note:**

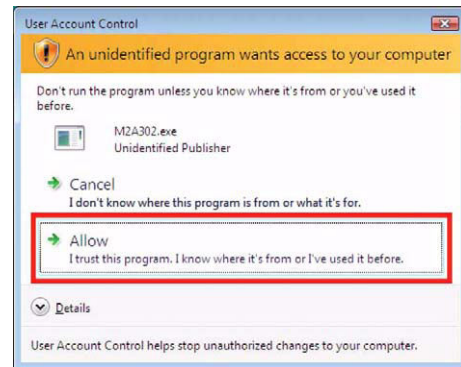
- ◆ If using Windows Vista, it is not necessary to install the run-time environment specified above. Otherwise, if Microsoft .NET Framework 2.0 (or later) is not installed, download the software from the following URL and install it prior to installing MCP-2A: <http://www.microsoft.com/downloads/details.aspx?FamilyID=0856eacb-4362-4b0d-8edd-aab15c5e04f5&displaylang=en>  
Use the following procedure to determine if Microsoft .NET Framework 2.0 (or later) is installed on your computer. The example shown is for Windows XP.  
Click "Start" > "Control Panel" > "Add or Remove Programs". You should see "Microsoft .NET Framework 2.0" (or later) in the list of installed software.
  - ◆ Depending on the type of computer, there may not be any equipped COM ports. In this case, you will need a USB-to-serial port conversion cable. Details of USB-to-serial conversion for use with APRS and TM-D710A/E can be obtained from the amateur radio community.
2. Download the newest version of MCP-2A from the Kenwood web site URL shown below (URL is subject to change). MCP-2A download location: [http://www.kenwood.com/ii/products/info/amateur/mcp\\_2a.html](http://www.kenwood.com/ii/products/info/amateur/mcp_2a.html)

3. Click the icon of the downloaded software.

Follow the Wizard installation instructions presented on screen.

**Note:**

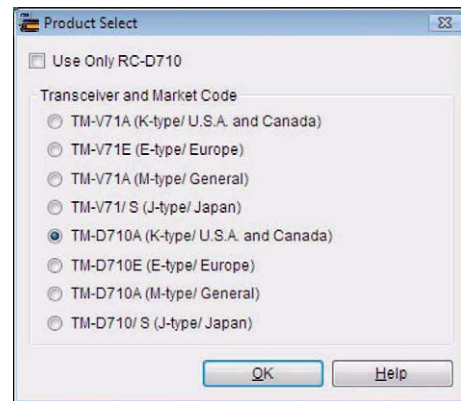
- ◆ Windows Vista requires that you click the “Allow” button when the User Account Control window displays a message asking permission to install the software.
- ◆ Installing MCP-2A alone without first installing Microsoft .NET Framework 2.0 (or later) will result in MCP-2A not being able to start. Microsoft .NET Framework 2.0 (or later) must be installed first. Windows Vista does not require Microsoft .NET Framework 2.0 (or later) since this newer version of Windows already contains the necessary environment software.



**Figure 9-2 Windows Vista User Account Control Window**

4. Click “Start” > “Program” > “KENWOOD” > “MCP-2A” to start MCP-2A.

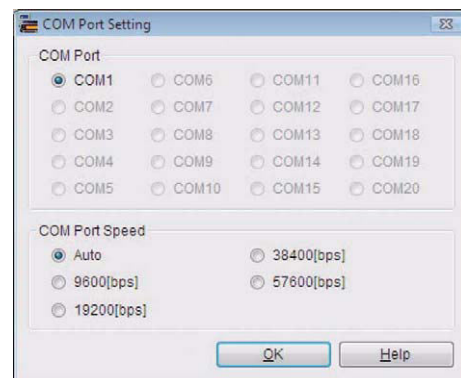
When MCP-2A starts, the transceiver model is requested. Select the correct transceiver model and click the “OK” button. You can modify the model later if necessary.



**Figure 9-3 MCP-2A Product Select Window**

5. Select the communication port and data rate.

Specify in the COM Port frame the COM port that will be used to communicate via your computer with the target station. You cannot select grayed out ports. If all ports are grayed out, this indicates your computer has no COM ports installed and you will not be able to use the MCP-2A software even if you click the “OK” button.



**Figure 9-4 MCP-2A COM Port Setting Window**

6. Finish the installation. The fact that information is read from the target transceiver completes the MCP-2A installation.

Click the “OK” button, select “Read Data from the Transceiver” from the **Program** pulldown menu and read the information from the target transceiver.

**Note:** The basic method of using MCP-2A is to read the existing transceiver data into MCP-2A, edit the configuration, and then write the new configuration back to the transceiver.

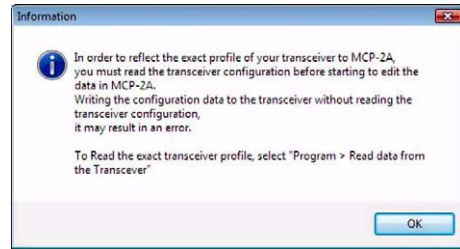


Figure 9-5 MCP-2A Read Transceiver Advisory Message

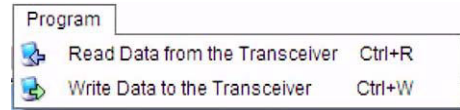


Figure 9-6 MCP-2A Program Menu: Read Data from the Transceiver



## 9.2 Main Functions of MCP-2A

MCP-2A has many functions. This section lists the most commonly used functions of MCP-2A including importing files.

### 9.2.1 Main New Functions Added

- Imports and exports memory channels.
- Outputs files in html format.
- Inputs memory channels from tabular format.

### 9.2.2 Useful Functions of MCP-2A

- Creates main memory groups and PM (Programmable Memory).
- Reads and retains memory channel and other data.
- Imports/ exports memory channels.
- Imports files that have been exported from ARRL's TravelPlus for Repeaters.
- Imports files created by earlier versions of MCP series software (see Note below).
- Changes font sizes.
- Indicates user name/ callsign.

### 9.2.3 Functions Only Configurable by MCP-2A

- Selecting monitor method for EchoLink Sysop mode.
- Switching SQC active conditions.
- For packet transmission or EchoLink Sysop mode, changing the input sensitivity for the data terminal and configuring the output level.
- Selecting 10 MHz steps for the VFO.
- Configuring the character string for the power on password.

**Note:** Regarding files created with the other MCP series software for products other than TM-V71A/E and TM-D710A/E, it is possible to read the memory channel data.

### 9.3 Importing Other MCP Files into MCP-2A

With MCP-2A, it is possible to read a file that was created using other MCP series software. To read a file created by other MCP software, select “Open” from the **File** pulldown menu. In the **Open** window, select the correct file type in the “Files of type” dropdown list, and open the desired file.

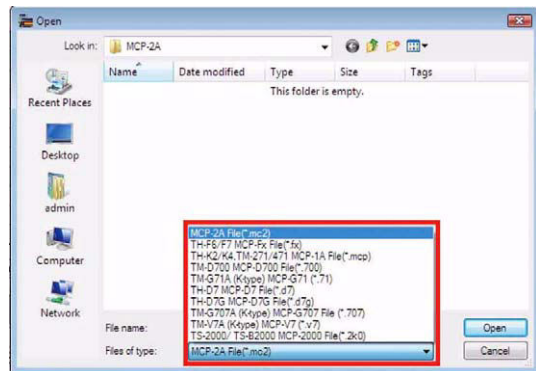


Figure 9-7 MCP-2A Open Window

The files that were created by other MCP programs (except J-type) in the table below can be imported into MCP-2A. The referenced software can be downloaded from the following web site: [http://www.kenwood.com/i/products/info/amateur/software\\_download.html](http://www.kenwood.com/i/products/info/amateur/software_download.html).

Table 9-2 MCP-2A Importable File Formats Table

Software Name and Extension	Transceiver Model	Remarks
MCP-2000 (*.2k0)	TS-2000 TS-2000X TS-B2000	Unable to read memory channels that cannot be received by using TM-V71A/E and TM-D710A/E. TS-B2000 is only for overseas models (outside Japan).
MCP-D7G (*.d7g)	TH-D7A(G) TH-D7A(G2.0) TH-D7E(G2.0)	Only for overseas models (outside Japan). TH-D7 J-type (Japan) is unable to use due to command specification differences.
MCP-2A (*.mcp)	TH-K2AT/ TH-K2E/ TH-K2ET/ TH-K4AT/ TH-K4E/ TM-271A/ TM-271E	
MCP-F6/F7 (*.fx)	TH-F6A/ TH-F7A/ TH-F7E	Memory channels that are outside of the receive frequency range of TM-D710A/E or TM-V71A/E cannot be read.
MCP-D700 (*.700)	TM-D700A/ TM-D700E	
MCP-D7 (*.d7)	TH-D7A/ TH-D7E	

Only files created for K-type (U.S.A. and Canada) models can be imported into MCP-2A. The referenced software can be downloaded from the following web site: [http://www.kenwoodusa.com/Support/AMA\\_Radios/](http://www.kenwoodusa.com/Support/AMA_Radios/).

Table 9-3 MCP-2A Importable File Formats Table (K-type only)

Software Name and Extension	Transceiver Model	Remarks
MCP-G707 (*.707)	TM-G707A	Only for U.S.A. and Canada models. Unable to use other than K-type (U.S.A. and Canada) of TM-G707 due to command specification differences. DTSS is ignored.
MCP-V7 (*.v7)	TM-V7A	Only for U.S.A. and Canada models. Unable to use other than K-type (U.S.A. and Canada) of TM-V7 due to command specification differences. DTSS is ignored.
MCP-G71 (*.71)	TH-G71A	Only for U.S.A. and Canada models. Unable to use other than K-type (U.S.A. and Canada) of TH-G71 due to command specification differences.

**Note:**

- ◆ MCP-2A is unable to read memory channels that cannot be received by using TM-V71A/E and TM-D710A/E.
- ◆ With MCP-2A, it is not possible to exchange data between above-mentioned transceivers except TM-V71A/E or TM-D710A/E.
- ◆ MCP-2A cannot read DTMF memory and menu settings, etc. from the above-mentioned transceivers except TM-V71A/E or TM-D710A/E.
- ◆ For TM-V71A/E, due to its display with six columns of 13 digits, there are times when some characters used in a memory name cannot be read depending on how the data was originally produced. For TM-D710A/E, due to its dot matrix display with eight columns, a memory name will appear the same as the original.
- ◆ Although you may be able to import an MCP file that is not explained in the above tables, some data in the file may not be read into the MCP-2A program.

## 9.4 Importing .hmk Files Created by Another MCP-2A

To exchange a file with MCP-2A where the market code does not agree, file exchange is possible via the .hmk file type. It is possible to import this file with MCP-2A. To output MCP-2A channel data as a file that can be exchanged with another MCP-2A, export .hmk files by selecting “Export” > “HMK File” from the **File** pulldown menu.

On the other hand, to import a .hmk file, import it by selecting “Import” > “HMK File” from the **File** pulldown menu.

**Note:** By starting the MCP-2A software multiple times, it is possible to copy and paste memory channel data between MCP-2A open windows.

## 9.5 Other Functions

### 9.5.1 Basic Functions

Using MCP-2A, it is possible to configure almost all transceiver functions as were configured with MCP-1A. And, too, there are unique functions that can only be configured with MCP-2A.

**Table 9-4 MCP-2A Basic Functions Table**

Category	Summary of Functions
Memory Frequencies	Memory channels, Program Memory channels, Call channels, Train channels/ Weather channels, VFO frequencies
DTMF Memories	DTMF/ EchoLink memories
Menu Settings	Transceiver menu, Band mask, Variable levels for data terminal, SQC logic and others
Unique Functions	Import / Export, increasing character size, verifying radio states, indicating user's name/ callsign

**Note:** Train channels are available only for J-type (Japan) and Weather channels are available only for K-type (U.S.A. and Canada)

### 9.5.2 Memory Channels

#### 9.5.2.1 Memory Channels

It is possible with TM-V71A/E and TM-D710A/E to configure even those memory channels created with MCP. In addition, for the usual memory channels, arranging the order of channels via a sorting feature can be done.

#### 9.5.2.2 Weather/ Train Channels

It is possible to program train channels, if using a J-type (Japan) transceiver model; or you can program weather channels, if using a K-type (U.S.A. and Canada) transceiver model.

#### 9.5.2.3 EchoLink Memory Channels

It is possible with TM-V71A/E and TM-D710A/E to configure even those EchoLink channels created with MCP.

## **9.5.3 Menu Settings**

### **9.5.3.1 Transceiver Menu > EchoLink RX Monitor**

When using the transceiver in EchoLink Sysop mode, output from the speaker and output to the data terminal can be configured. This function is only possible to configure with the MCP-2A.

### **9.5.3.2 Transceiver Menu > Repeater Mode (K-type only)**

It is possible to configure the transceiver as a cross-band repeater. When the transceiver is configured to be a repeater, there is a function that transmits the repeater's own ID. You can configure the ID transmission method and choose between Off, Morse code or Voice. When Voice is selected, it is necessary to install the optional VGS-1 Voice Guidance and Storage unit. The combined use of cross-band repeater with the external remote function is not possible. The cross-band repeater function is only available on a K-type (U.S.A. and Canada) model.

### **9.5.3.3 Transceiver Menu > Password**

It is possible to configure the character string for the password. This function is only possible to configure with the MCP-2A.

### **9.5.3.4 Transceiver Menu > 10MHz Mode**

Configure whether you will use the 10 MHz step variable function.

### **9.5.3.5 Transceiver Menu > TM-D710A/E**

This item can only be configured with TM-D710A/E.

### **9.5.3.6 Transceiver Menu > RC-D710**

This item can only be configured with RC-D710.

### **9.5.3.7 Transceiver Menu > Variable Level of Data Terminal**

It is possible to configure the input sensitivity of the external equipment terminal for data communications and the output level. The settings are differentiated between TM-V71A/E, TM-D710A/E and RC-D710.

### **9.5.3.8 Transceiver Menu > SQC Output Logic**

It is possible to configure the output logic of the external output terminal (active level) that is used for data communications, etc. Normally, EchoLink Sysop mode uses the "High" configuration. For details, refer to 8.5.4 Using MCP-2A to Connect TM-D710A/E.

## 9.5.4 Unique Functions

### 9.5.4.1 Importing TravelPlus for Repeaters Files

It is possible to read a file that was exported from TravelPlus for Repeaters sold by ARRL. A file from TravelPlus for Repeaters has a different file extension and format depending on the year it was created. MCP-2A requires the “tpe” extension (2005-2006 edition; version 9.0). But if it is acceptable to you to be able to read only a portion of the file, then the file can be read if a .csv extension is applied. Refer to the MCP-2A Help file for details of how to read this type of file.

**Note:** The method of storing the On/ Off status and frequency for Tone/CTCSS was modified at the time of MCP-2A, Version 3.00.

- In the case that “100.0” is displayed in the CTCSS column in the file:  
Up to Version 2.01: Turn CTCSS On and configure CTCSS frequency for “100.0 Hz”.  
Version 3.00 and later: Turn Tone On and configure Tone frequency for “100.0 Hz”.
- In the case that “67.0/100.0” is displayed in the CTCSS column in the file:  
Up to Version 2.01: CTCSS status and CTCSS frequency are set at initial values.  
Version 3.00 and later: Turn Tone On and configure Tone frequency for “67.0 Hz”.

### 9.5.4.2 Importing .hmk Files

It is possible to import a file that was created using Kenwood .hmk format.

### 9.5.4.3 Exporting .hmk Files

It is possible to export a file that was created using Kenwood .hmk format. Refer to the MCP-2A Help file for details as to how to use a .hmk file that was imported as explained in Section 9.4 Importing .hmk Files Created by Another MCP-2A.

### 9.5.4.4 Exporting .html Files

It is possible to export a file with .html format.

### 9.5.4.5 Splash Window

You can switch the **Splash** window On or Off while you are operating.

**Note:** You can cancel the **Splash** window temporarily by double-clicking it while it is visible.

## 9.5.5 Useful Functions

### 9.5.5.1 Verifying Firmware Versions

First, connect the transceiver or operation panel to the computer, and then turn the transceiver or operation panel ON. Select “Product Information” from the **Model** dropdown menu. The transceiver firmware version will appear on the MCP-2A.

**Note:** To confirm the firmware version of the TNC microprocessor, the firmware version of the operation panel must be 2.00 or later and “APRSxx” or “NAVITRAxx” must be shown on the display.

### 9.5.5.2 Increasing Size of Characters

Using MCP-2A, select from three sizes of characters with “Font” in the **View** pulldown menu.

**Note:**

- ◆ Use an Operating System function to change the size of characters on the Menu bar.
- ◆ If you configure the font size for other than 96 dpi for the Menu bar and also select a font other than Normal for MCP-2A, some of the displayed items may not fit within a window.

### 9.5.5.3 Configuring the Names for PM or Memory Groups

It is possible to configure the name for each memory with “Memory Group Name” or “Programmable Memory Name” in the **Setup** pulldown menu.

### 9.5.5.4 Configuring User Names with MCP-2A

It is possible to configure the user’s name or callsign with “Callsign Setting” in the **Setup** pulldown menu. The character string that is input is shown in the About MCP-2A window, in the Title bar and in the Splash window when the software starts. In addition, when the **Start sending the Morse code** checkbox is checked, the character string configured will be played back using Morse code when the software starts.

**Note:** Depending on your particular computer used, it may not be possible to play back Morse code.

### 9.5.5.5 Configuring How Memory Channels Display

Using “Range of Standard Memory Channel” in the **Setup** pulldown menu, it can be configured whether memory channels are displayed for configuration in groups of 100 or whether all memory channels are displayed in one window.

### 9.5.5.6 Memory Channel Shortcut

The memory channel shortcut can be used as follows:

- Double-click “Free Memory Channel: xxxx/1000” on the Status bar (see Figure 9-8). The **Memory Channel** window will appear.

The memory channel shortcut can be used as follows:

Furthermore, if the following action is done, the configuration window will open to allow configurations to be entered:

- Double-click “Offset/ Tx Freq.”, “Plus/ Minus Shift/ Split”, “T/CT/DCS” sections on the Status bar (see Figure 9-8) to edit the channel configurations. The **Channel Edit** window will appear.

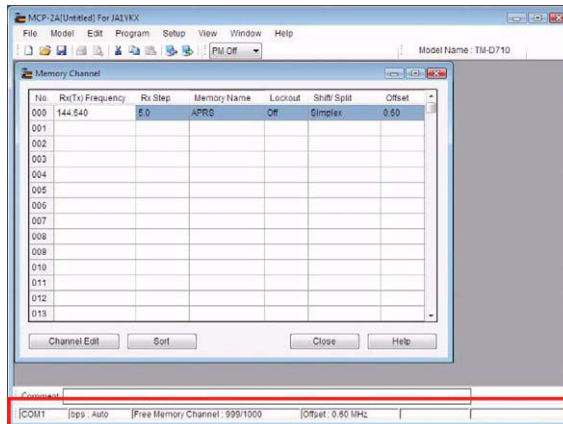


Figure 9-8 Memory Channel Shortcut

### 9.5.5.7 COM Port Shortcut

Double-click the “COM x” or “bps : xxxx” sections on the Status bar (see Figure 9-8). The **COM Port Setting** window will appear.



# 10 HOW TO UPDATE FIRMWARE

## 10.1 Firmware

This section describes the TM-D710A/E or TM-V71A/E transceiver itself, the TM-D710 operation panel and how to update the firmware of RC-D710 and the TNC. Those using TM-D710A/E and RC-D710 previously and who would like to utilize the SmartBeaconing and enhanced QSY functions which was added to APRS must update the firmware.

## 10.2 Verifying Necessary Equipment

In order to update the equipment, each of the following is required:

- Equipment to be updated (TM-D710A/E, TM-V71A/E, or RC-D710)
- Computer
- Communication cable (PG-5G or PG-5H)
- Firmware update program

Kenwood provides the firmware update program for use on Windows operating systems. The specifications for your computer in order to use this software are as shown in Table 10-1.

**Table 10-1 Firmware Update Computer Specifications Table**

Personal Computer	Required Specification
Operating System	Windows 2000 (SP4 or later), Windows XP (SP2 or later), Windows Vista (32-bit version)
CPU	CPU recommended by OS or faster
Memory	Larger than OS recommended capacity
Run-time Environment	.NET Framework 2.0 or later (see Notes below)
Communication Port	Serial port available (COM1 to COM20). (see Notes below)

**Note:**

- ◆ If using Windows Vista, it is not necessary to install the run-time environment specified above. Otherwise, if Microsoft .NET Framework 2.0 (or later) is not installed, download the software from the following URL and install it prior to installing MCP-2A: <http://www.microsoft.com/downloads/details.aspx?FamilyID=0856eacb-4362-4b0d-8edd-aab15c5e04f5&displaylang=en>

Use the following procedure to determine if Microsoft .NET Framework 2.0 (or later) is installed on your computer. The example shown is for Windows XP.

Click "Start" > "Control Panel" > "Add or Remove Programs". You should see "Microsoft .NET Framework 2.0" (or later) in the list of installed software.

While updating the firmware, the transceiver or panel may be fully reset. If you do not wish to lose the memory contents and configurations, save the current configuration data to a file prior to updating the firmware.

- ◆ Depending on the type of computer, there may not be any equipped COM ports. In this case, you will need a USB-to-serial port conversion cable.

## 10.3 How to Verify Firmware Version

You can verify the firmware version by the procedure below. Use one of the following two ways of verifying.

### 10.3.1 Checking the Transceiver Operation Panel

1. Press **[TNC]** on TM-D710A/E or RC-D710 to display “APRSxx”.  
(Skip this step for TM-V71A/E)
2. Turn the power OFF.
3. Hold **[⏻]** and **[PF1]** down and turn the power ON.
4. Verify the following is displayed.
  - Number on left side of display: Indicates the firmware version of the transceiver itself.
  - Number on right side of display: Indicates the firmware version of the operation panel.
  - Number at upper right side of display: Indicates the firmware version of the TNC.



Figure 10-1 Verifying Firmware Versions

**Note:**

- ◆ The firmware version number appears on left side of the display for TM-V71A/E.
- ◆ The firmware version of the operation panel must be 1.12 or later to display the firmware version of the TNC microprocessor on the operation panel display.

### 10.3.2 Checking with MCP-2A

1. Press **[TNC]** on TM-D710A/E or RC-D710 to display “APRSxx”.  
(Skip this step for TM-V71A/E)
2. Turn the power OFF. For TM-D710A/E, connect the communication cable to the transceiver itself.  
For RC-D710, connect the communication cable to the front panel.
3. Turn the power of the transceiver or RC-D710 ON.
4. Start MCP-2A and select “Product Information” from the **Model** pulldown menu.

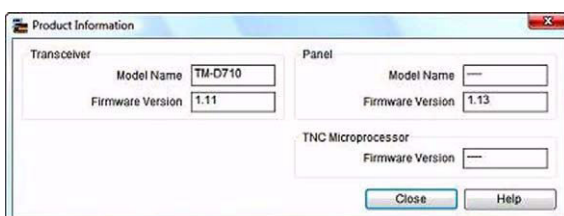


Figure 10-2 Verifying Firmware Versions

**Note:** The firmware version of the operation panel must be 2.00 or later to use MCP-2A to display the firmware version of the TNC microprocessor.

### 10.3.3 Firmware Update for SmartBeaconing and Other Enhancements

New firmware is required to use the SmartBeaconing function in the following cases:

- If transceiver and controller version is older than Version 2.00

## 10.4 How to Get Newest Firmware/Software

Download the newest version of update software from the Kenwood web site URL shown below (URL is subject to change).

[http://www.kenwood.com/i/products/info/amateur/software\\_download.html](http://www.kenwood.com/i/products/info/amateur/software_download.html)

## 10.5 How to Update

Carefully read the update instructions provided when you download the software. Begin the procedure only after you understand the provided instructions.

**Table 10-2 Firmware Update Summary Table**

Item to Update	Files Required	Remarks
Transceiver	TM-V71_TM-D710_Main_VxxxE.exe	The updater file can also be used for TM-V71A/E.
Operation Panel	TM-D710_RC-D710_OpPanel_VxxxE.exe	The updater file can also be used for RC-D710.
TNC	TM-D710_RC-D710_Tnc_VxxxE.exe	Operation panel's firmware must be Ver. 1.12 or newer. The updater file can also be used for RC-D710.

**Note:**

- ◆ During a routine update, there are times when automatic resets are executed. Therefore, ensure you back up all values and channel data prior to beginning the firmware update.
- ◆ To restore the backup data, confirm all data is correct using on MCP-2A prior to writing data back to the transceiver.

# 11 MISCELLANEOUS TOPICS

## 11.1 RC-D710 (Operation Panel / APRS-ready Standalone TNC)

It is possible to replace the TM-V71A/E's front panel with RC-D710 and upgrade your TM-V71A/E to be functionally equivalent to TM-D710A/E. RC-D710 can function as the operating panel of TM-D710A/E. In addition, if RC-D710 is connected to another transceiver via the optional PG-5J interface kit, this produces an APRS-ready standalone TNC.

### 11.1.1 Models Supported for use with RC-D710

The following models are supported to be used with RC-D710: TM-V71A/E, TM-D710A/E, TM-D700A/E, TM-V708A, TM-G707A/E, TM-V7A/E, TM-733A/E, TM-255A/E and TM-455A/E. Excluding the situations of using RC-D710 as an operation panel for TM-V71A/E and TM-D710A/E, the optional PG-5J interface kit is necessary.

**Note:** 1200/9600 bps data communications functionality is possible via the 6-pin mini-DIN connector. However, this type of data operation cannot be guaranteed for these transceivers. Furthermore, when RC-D710 is connected to equipment other than the above mentioned transceivers, Kenwood cannot support nor offer an opinion as to whether such configurations will function.

#### 11.1.1.1 Connection Example 1: Connecting RC-D710 to TM-V7A/E

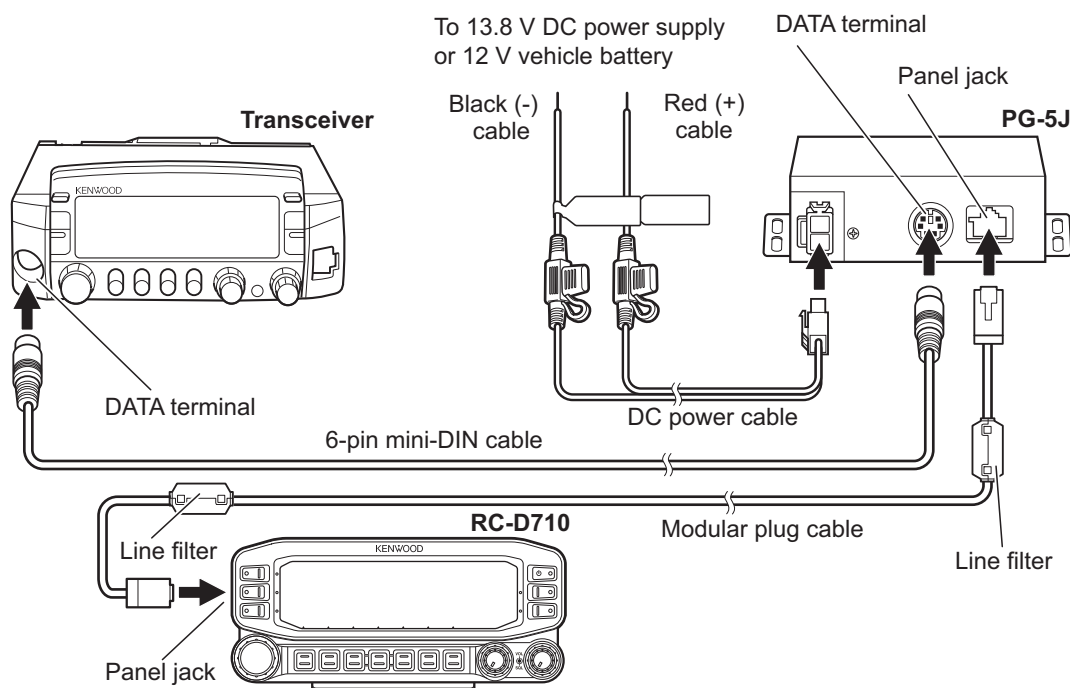


Figure 11-1 Connecting RC-D710 to TM-V7A/E

### 11.1.1.2 Connection Example 2: Connecting RC-D710 to TM-D700A/E, TM-V708A

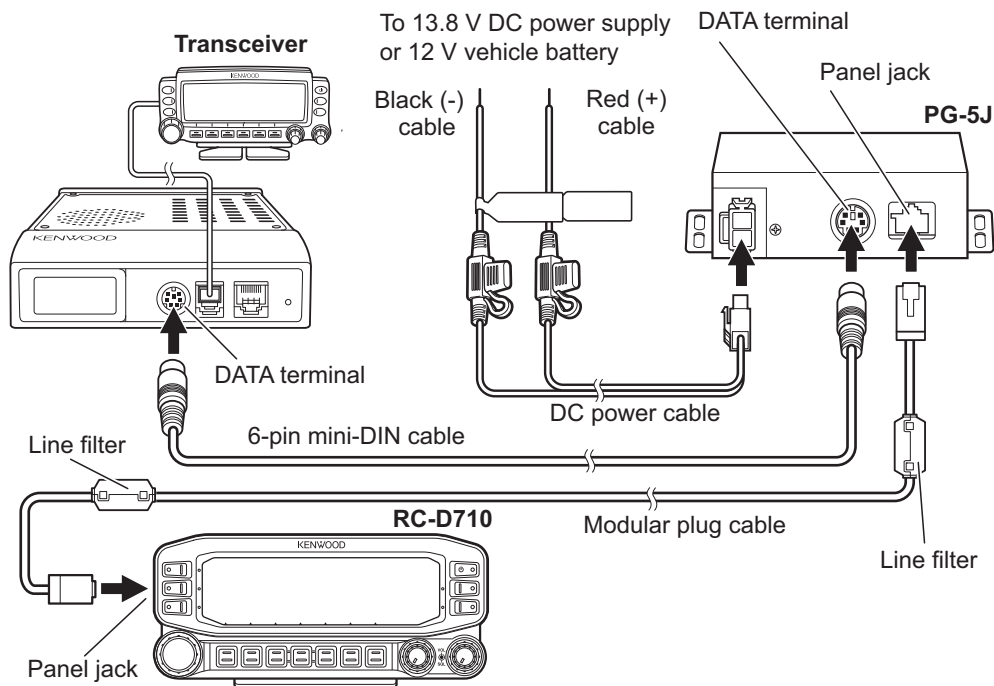


Figure 11-2 Connecting RC-D710 to TM-D700A/E, TM-V708A

**Note:** Excluding the situation of using the RC-D710 as the operating panel for TM-V71A/E or TM-D710A/E, the RC-D710 cannot operate transceivers. Be sure to connect the control panel of the transceiver to the transceiver itself.

### 11.1.1.3 DATA Terminal Pins (PG-5J)

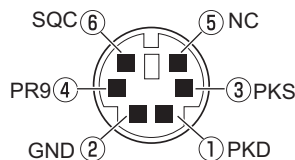



Table 11-1 DATA Terminal Pins (PG-5J) Table

No.	Name	Input/Output	Function
1	PKD	Output	TNC data output 2Vp-p/10kΩ (9600 bps) 40mVp-p/10kΩ (1200 bps )
2	GND	-	GND
3	PKS	Output	Data standby control signal output Open collector TX: Low level / RX: High impedance
4	PR9	Input	TNC data input (both for 1200 bps and 9600 bps) 350mVp-p to 600mVp-p/10kΩ
5	NC	-	No connection
6	SQC	Input	Squelch control signal input (5V CMOS level) SQL Open: High level / SQL Close: Low level

## 11.2 Adjusting Input and Output Levels

When a transceiver, other than those that have been verified to operate correctly, is connected, there are times when adjustment of input/output levels may become necessary for RC-D710 and the transceiver to function properly. Even when you cannot adjust the input and output levels on the transceiver side that is connected, it is possible to adjust input and output levels on the RC-D710 side using 3dB steps by using MCP-2A.

### 11.2.1 How to Configure Input/Output Levels of RC-D710

1. Turn the power of RC-D710 OFF.
2. Connect the PG-5G programming cable (serial communication cable) between the COM terminal on the rear side of RC-D710 and a personal computer.
3. Start MCP-2A.  
Click the “” button on MCP-2A and read the data from RC-D710.
4. Select “Data Terminal” from the **Edit** pulldown menu.  
The configuration window for input/ output levels will open.

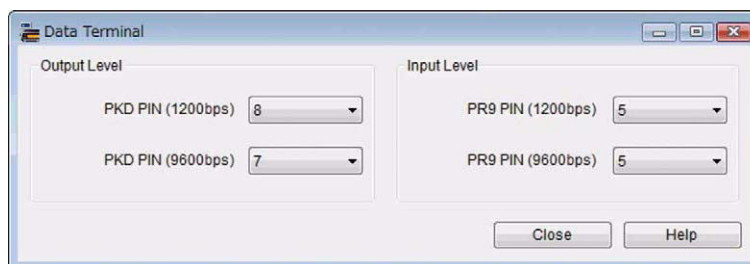


Figure 11-3 Data Terminal Window


PKD PIN (1200bps): 1200 bps output level

PR9 PIN (1200bps): 1200 bps input level

PKD PIN (9600bps): 9600 bps output level

PR9 PIN (9600bps): 9600 bps input level

\* Input / output terminals for 1200 bps and 9600 bps are the same. However, levels have to be set individually. Refer to the Help file for MCP-2A for details.

5. Click the “” button on MCP-2A and write the data to RC-D710.
6. Turn the power of RC-D710 OFF and disconnect the programming cable from PG-5G.

**Note:** In some transceivers, other than those that have been verified to operate correctly, the TNC data input/output line which is connected to PKD/PR9 has not disconnected the DC voltage inside the transceiver. Therefore, there are situations where the transceiver will not function properly even if input/output levels are adjusted correctly. Use caution.

## 11.3 Schematic Diagram of the Optional PG-5J Interface Kit

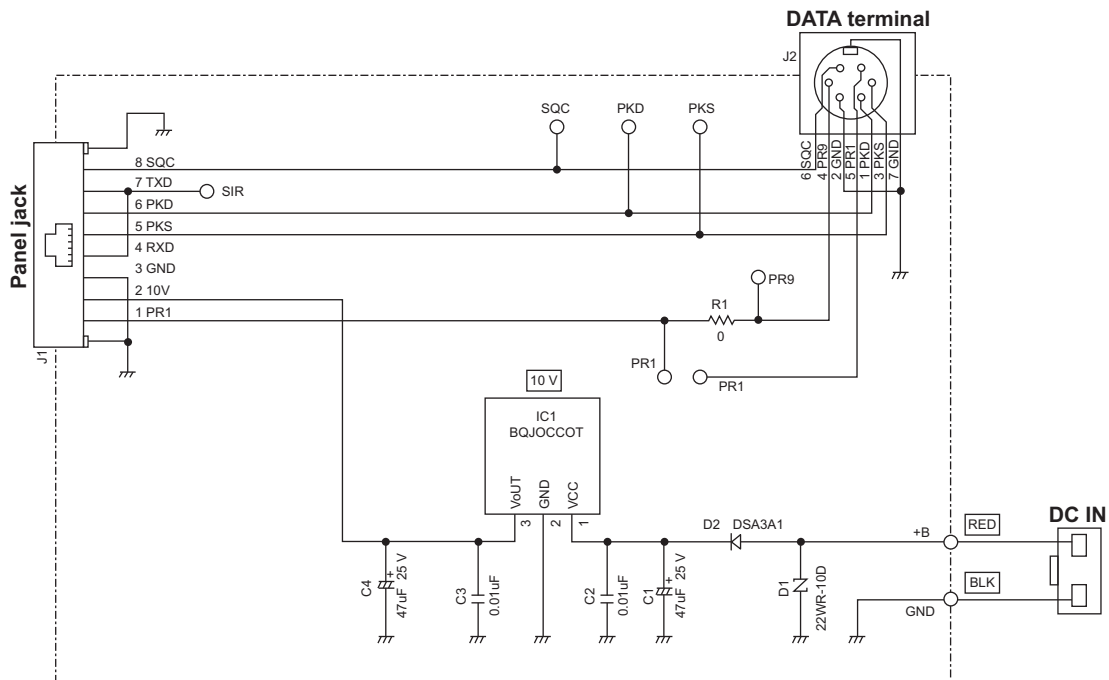


Figure 11-4 PG-5J Schematic Diagram

## 11.4 AvMap (written by Don Arnold, W6GPS)

The TM-D710A/E uses the NMEA 0183 standard at 4800 and 9600 baud rates to communicate with the GPS unit. The transceiver has three formats for interfacing to GPS units: NMEA, Magellan and the new Kenwood format. A GPS system with a serial interface will connect to the TM-D710A/E but if your GPS supports bi-directional communication, it is possible to have APRS callsigns and icons appear on the GPS screen. Of all the name brand GPS units, the AvMap G5 smoothly interfaces with the Kenwood TM-D710A/E TNC better than any other with less adaptation and more features specific to APRS and the TM-D710A/E by taking advantage of the Kenwood APRS sentence and providing a Kenwood interface cable for truly Plug and Play operations.

**Note:** The baud rates refer to serial communication between transceiver and GPS and not to the AX.25 Packet communication between transceivers.

AvMap G5 has many of the normal Personal Navigator data fields that you would find in most world brand GPS units, but AvMap developers have integrated the Kenwood sentence format to provide you a Tactical Mode. No other standalone GPS system has this exclusive Kenwood/AvMap feature. If you are involved in a search and rescue scenario, you can assign one of your APRS assets (callsigns) the target designation for Tactical Mode. This designated callsign on each position report is processed by AvMap for easy viewing and tracking.

If you are using the TM-D710A/E with the AvMap, in Tactical mode, you will get an additional five data fields that can be displayed on your AvMap:

Target ID - Callsign

Target Lat Long

Target SOG - Speed over Ground

Target COG - Course over Ground

Target Altitude - Mean -sea-level



**Figure 11-5 AvMap G5 and TM-D710A/E**

You can choose three of these five data fields to display on the AvMap screen. So, when your target callsign is moving, you can get real time information and a visual display on the AvMap G5.

A stationary callsign is displayed on the AvMap screen as a blue circle, if the mark moves more than 200 meters on a new report, AvMap creates a moving target or red triangle designator.

Recently added to the AvMap operating system is now full APRS icon representation. The decoded APRS packet from the Kenwood TM-D710A/E (in Kenwood waypoint format) is processed by the AvMap G5 operating system. When the mark is made on the screen, it now can be one of over 100 standardized APRS icons along with the callsign.

Setup of the Kenwood transceiver with AvMap is very simple. Using the defaults of the Kenwood transceiver, only a few menu configurations are needed to set up the TM-D710A/E.

Menu 600: (BASIC SETTINGS):

MY CALLSIGN: Your callsign and "-9". (such as "W6GPS-9")

Menu 602: (GPS PORT)

BAUD RATE: 9600

INPUT: GPS

OUTPUT: WAYPOINT

Menu 603 (WAYPOINT):

FORMAT: KENWOOD

NAME: 9-CHAR

Menu 611: (BEACON TX ALGORITHM)

METHOD: AUTO or SmartBeaconing



---

Press **[TNC]** on the operation panel of transceiver (“APRS12” should appear on the display).

**Note:** For a more detailed setup of APRS and the options available, see section 3 PREPARATIONS FOR USING APRS of AvMap G5 owner’s manual.

With the AvMap G5, the only thing needed is to verify in the setup menu that the interface is 9600 APRS. The 3-pin plug is inserted into the TM-D710A/E GPS port of the operation panel and the 4-pin connection to the TMC port of the AvMap G5. In no time, you will see APRS activity on your AvMap screen.

APRS activity is stored in the APRS subfolder of the contacts folder for easy reference so you can navigate to it or monitor a particular APRS callsign in Tactical Mode. With the Kenwood TM-D710A/E and AvMap G5, there is no need to mess around with USB to serial converters nor is there need for a cumbersome computer. Also, the serial input to the TM-D710A/E is on the operation panel, so it is close to the GPS receiver for a neater installation.

## Revision History

Date	Remarks
May 1, 2008	Initial release only for printing purposes.
May 16, 2008	<p>Revision 1.01 is released for web download.</p> <p>1) Added revision number and date on the back cover.</p> <p>2) Added Revision History.</p> <p>3) Fixed typos in 1.2 Evolving Development, 1.3 Affinity with VoIP, 2.1.3 Mobile Information Resource, 2.2 Ubiquitous Operations, 4.1.2.1 GPS and APRS Position Format, 5.1.3 Creating a CMD File for TM-D710A/E, 3.1 What Do I Need to Configure, 3.2.3 BEACON TYPE, 6.1.1.1 Automatic Reply Function, 6.1.2 Decay Algorithm Function, 6.1.3 Proportional Pathing Function, 6.1.5.3 Operation Example, 6.1.6.1 Transmitting QSY Information, 6.1.6.2 Receiving QSY Information, 7.3.1 Sending Email with TM-D710A/E and RC-D710, 7.4 Digipeaters (Digital Repeaters), 7.4.1 UIDIGI, 7.4.2 UIFLOOD, 7.4.3 UITRACE, 7.5.3 STATE/ SECTION/ REGION, 8.1 What is EchoLink?, 9.2.2 Useful Functions of MCP-2A, 9.3 Importing Other MCP Files into MCP-2A, 10.1 Firmware, 10.2 Verifying Necessary Equipment, 11.1.1 Models Supported for use with RC-D710 and 11.4 AvMap.</p> <p>4) Revised the descriptions in Amateurs Building the New Global Communications Network, 2.2 Ubiquitous Operation, 2.4 Kenwood Contributions, 3.1 What Do I Need to Configure, 3.2.1 Built-in Clock, 3.2.3 BEACON TYPE, 4.1 What is GPS?, 5.1.3 Creating a CMD File for TM-D710A/E, 6.1.6.1 Transmitting QSY Information, 7.4 Digipeaters (Digital Repeaters), 7.5.1 New-N Paradigm, 7.6 Using APRS and EchoLink Simultaneously, 8.1 What is EchoLink, 9.1 Downloading and Installing MCP-2A, 9.5.5.6 Memory Channel Shortcut, 10.2 Firmware, 10.2 Verifying Necessary Equipment, 10.3.3 Firmware Update for SmartBeaconing and other enhancements, 10.5 How to Update, 11.1.1.2 Connection Example 2: Connecting RC-D710 to TM-D700A/E and 11.4 AvMap.</p> <p>5) Revised Figure 3-2, Figure 6-8, Figure 6-9, Figure 6-10, Figure 7-3, Figure 7-5 and Figure 7-8.</p>

We would like to extend our thanks to the following people who helped compile this booklet:  
WB4APR Mr. Bob Bruninga, K1RFD Mr. Jonathan Taylor, KA9MVA Mr. Steve Bragg and W6GPS Mr. Don Arnold  
Also, we would like to thank all hams who support and maintain the APRS and EchoLink network in the world.

**KENWOOD**