

Notes:

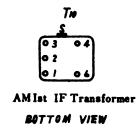
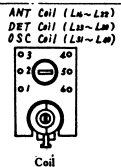
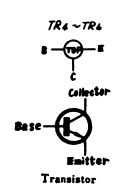
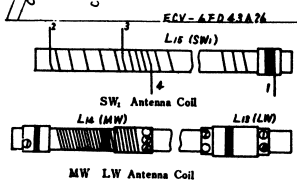
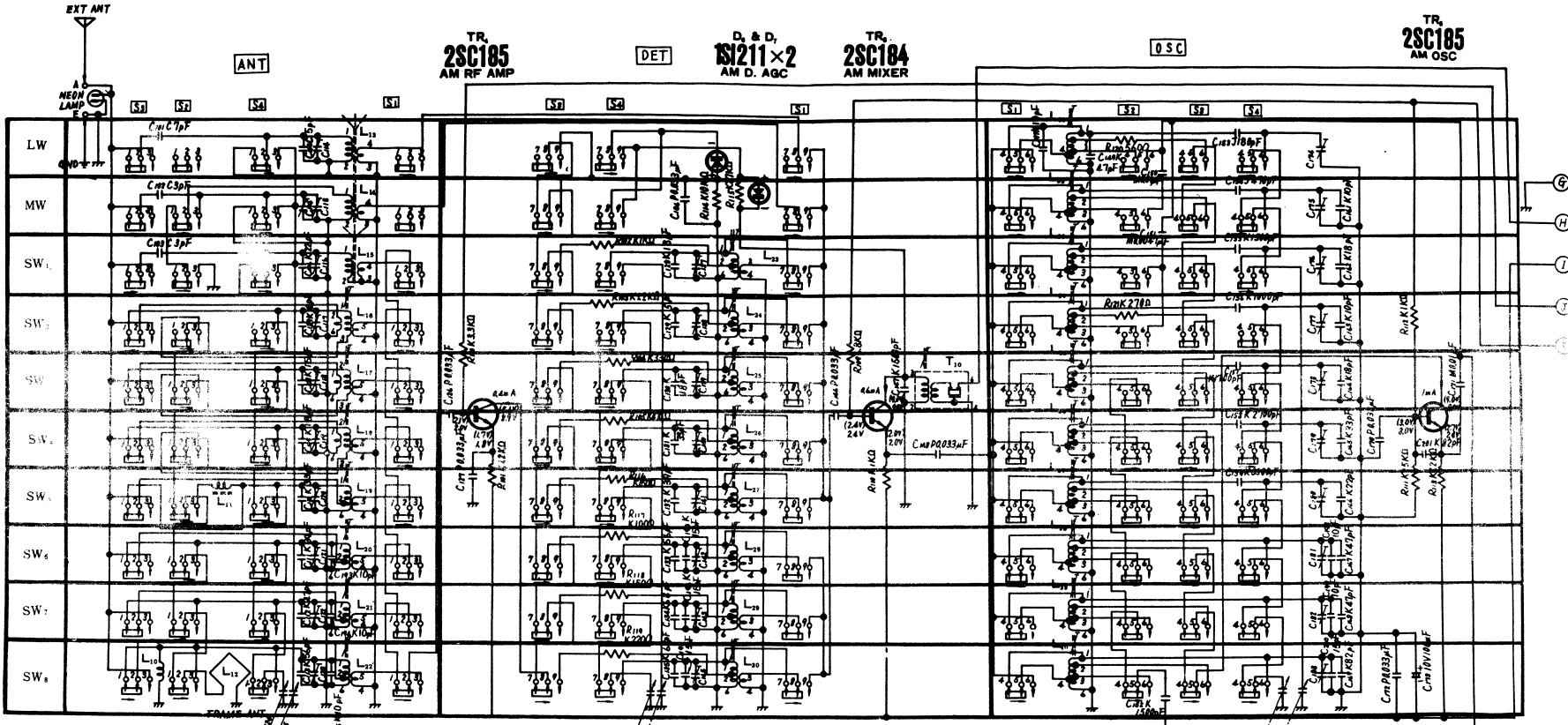
- S1~S4: Band selector switch in "OFF" position.
- S5, S6: Power source switch in "OFF" position.
- S7: AFC switch in "ON" position.
- S8: Dial light switch in "OFF" position.
- DC Voltage measurements are taken with circuit tester 10K Ω /Volt from negative terminal of battery.
-FM position. ().....AM position.
- Capital letters (C, D, J, K, M, P) in the circuit diagram

show allowable tolerance of resistors and capacitors as follows:

C = ± 0.25 PF D = ± 0.5 PF J = $\pm 5\%$ K = $\pm 10\%$
M = $\pm 20\%$ P = $\pm 100\%$
= 0%

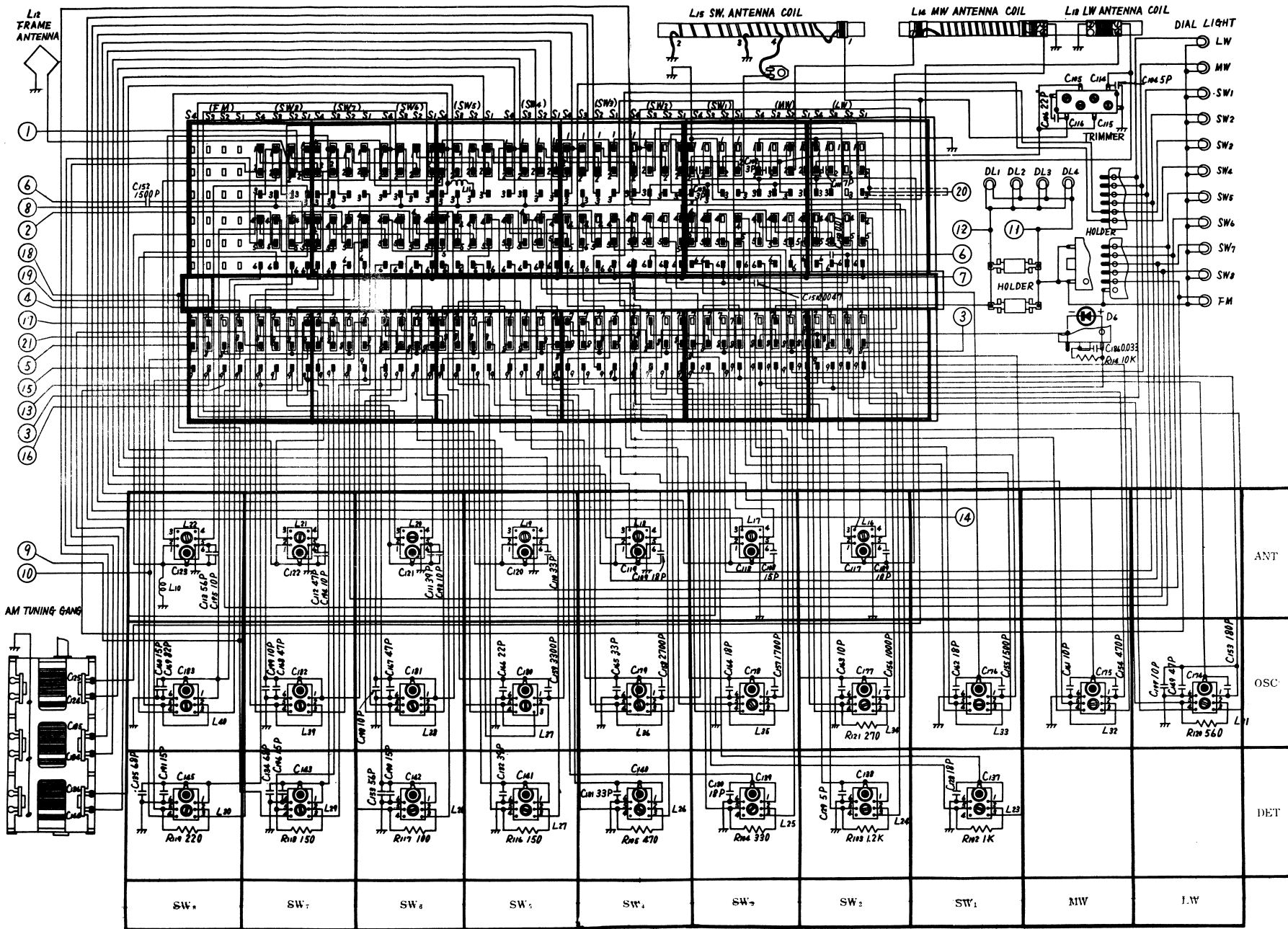
- Battery current: No signal FM, AM..... 20mA
Maximum output FM, AM..... 250mA

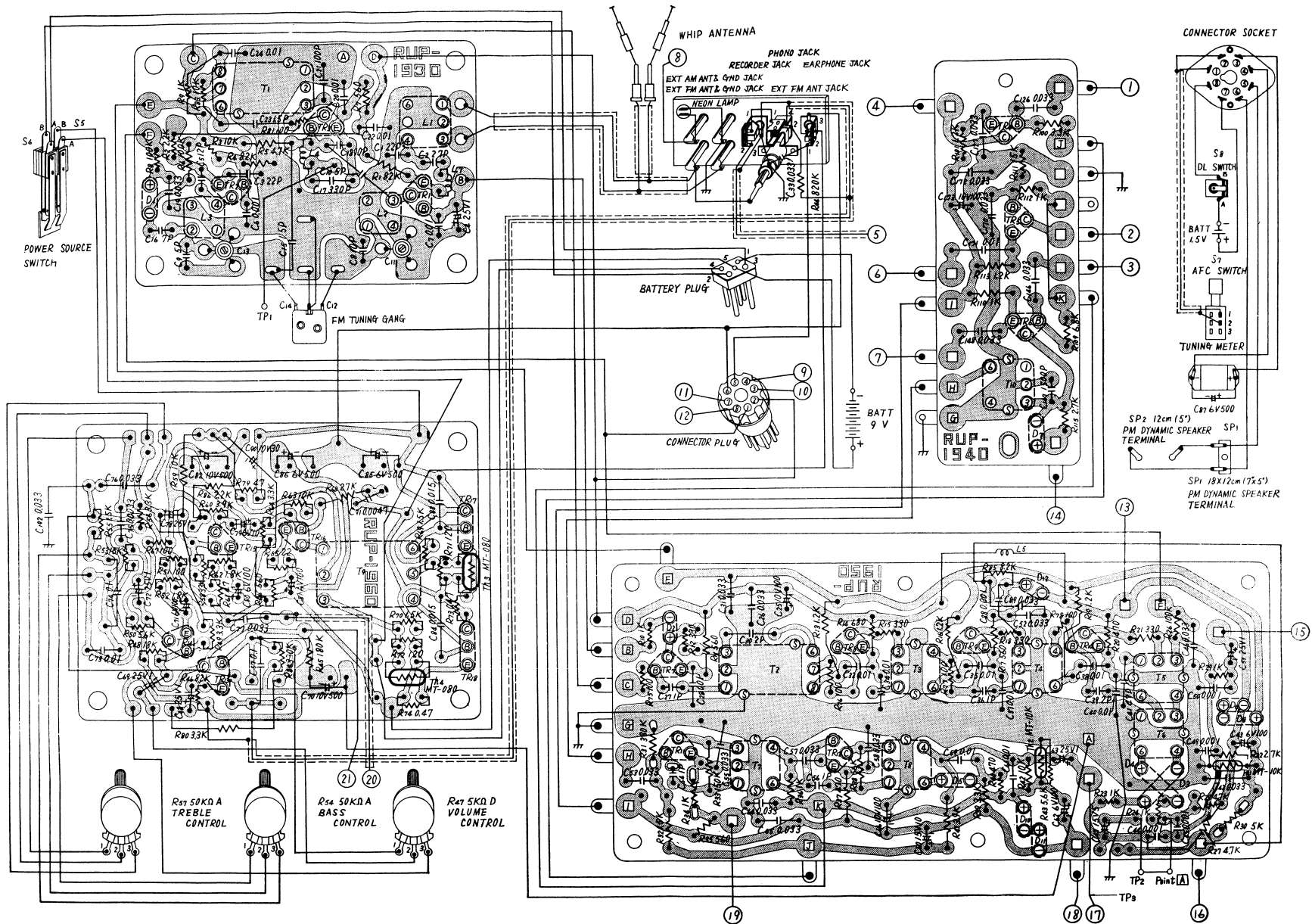
8. PF=pico farad=mmf
 μ F=micro farad=MF



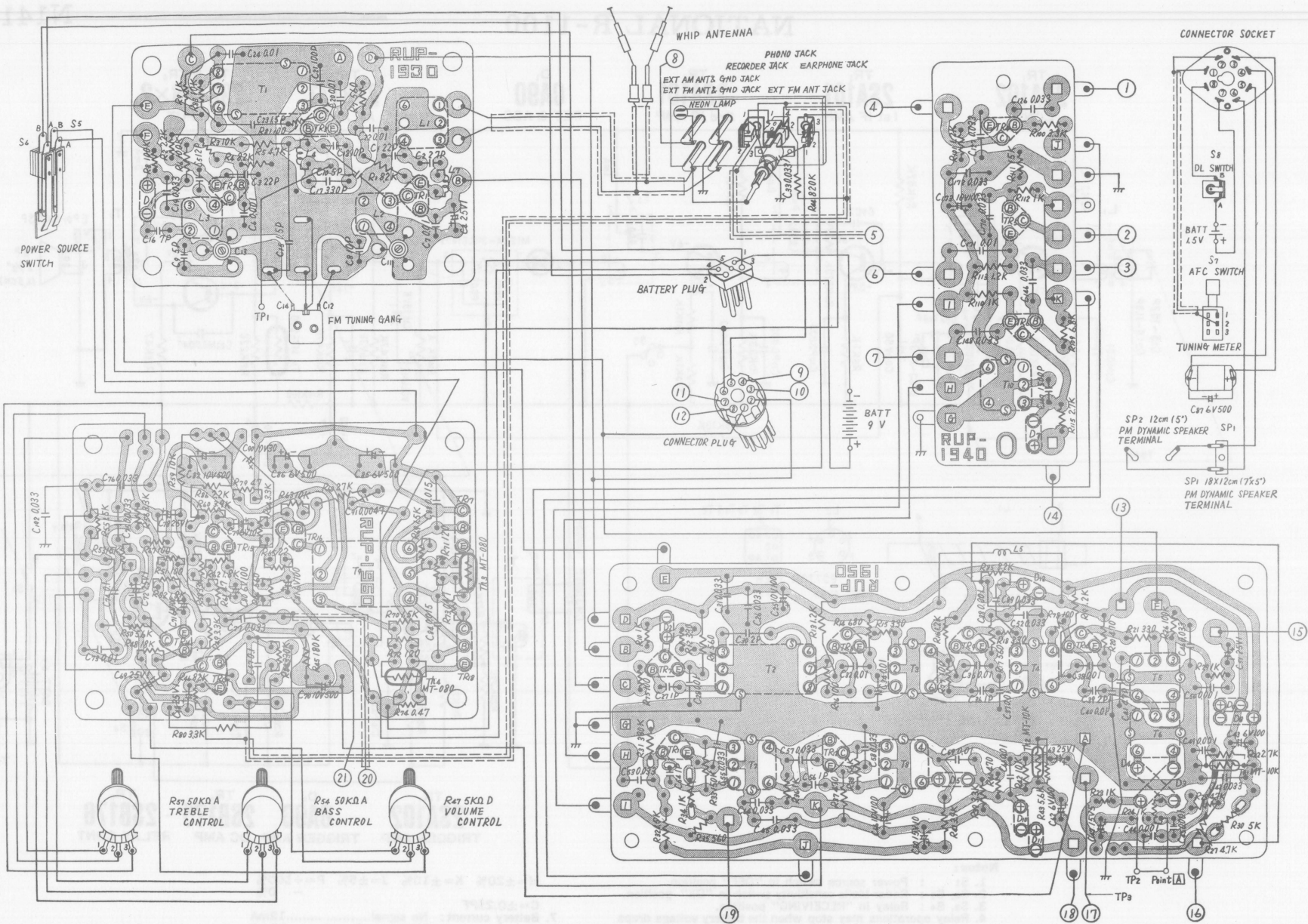
01	02	03	04	05	06	07	08	09	10	11	12	13	14	15	16	17	18	19	20	21	22	23	24	25	26	27	28	29	30	31	32	33	34	35	36	37	38	39	40	41	42	43	44	45	46	47	48	49	50	51	52	53	54	55	56	57	58	59	60	61	62	63	64	65	66	67	68	69	70	71	72	73	74	75	76	77	78	79	80	81	82	83	84	85	86	87	88	89	90	91	92	93	94	95	96	97	98	99	100
03	02	01	04	05	06	07	08	09	10	11	12	13	14	15	16	17	18	19	20	21	22	23	24	25	26	27	28	29	30	31	32	33	34	35	36	37	38	39	40	41	42	43	44	45	46	47	48	49	50	51	52	53	54	55	56	57	58	59	60	61	62	63	64	65	66	67	68	69	70	71	72	73	74	75	76	77	78	79	80	81	82	83	84	85	86	87	88	89	90	91	92	93	94	95	96	97	98	99	100

Band Selector Switch



**Notes:**

1. All resistor values in ohms (K=1000 Ω).
2. All capacitor values in micro farads (P= μ F).
3. S₁~S₄: Band selector switch in "OFF" position.
4. S₅, S₆: Power source switch in "OFF" position.
5. S₇: AFC switch in "ON" position.
6. S₈: Dial light switch in "OFF" position.

**Notes:**

1. All resistor values in ohms (K=1000Ω).
2. All capacitor values in micro farads (P=µF).
3. S1~S4: Band selector switch in "OFF" position.
4. S5, S6: Power source switch in "OFF" position.
5. S7: AFC switch in "ON" position.
6. S8: Dial light switch in "OFF" position.