

801e/802 LCD SCREEN

I posted a little while ago about the burnt out LCD (screen) on my 801e. I have just changed it and thought I would share how easy it was.

If you are fairly handy with DIY you will not find this a problem, no soldering required as the new screen, direct from Icom, already has the circuit board attached.

The screen is the same one in the 802 and many other Icom radios, VHF included.

Please follow the notes on each picture.

" BONES BLACK"



The burnt out screen alongside the new one as supplied by Icom.



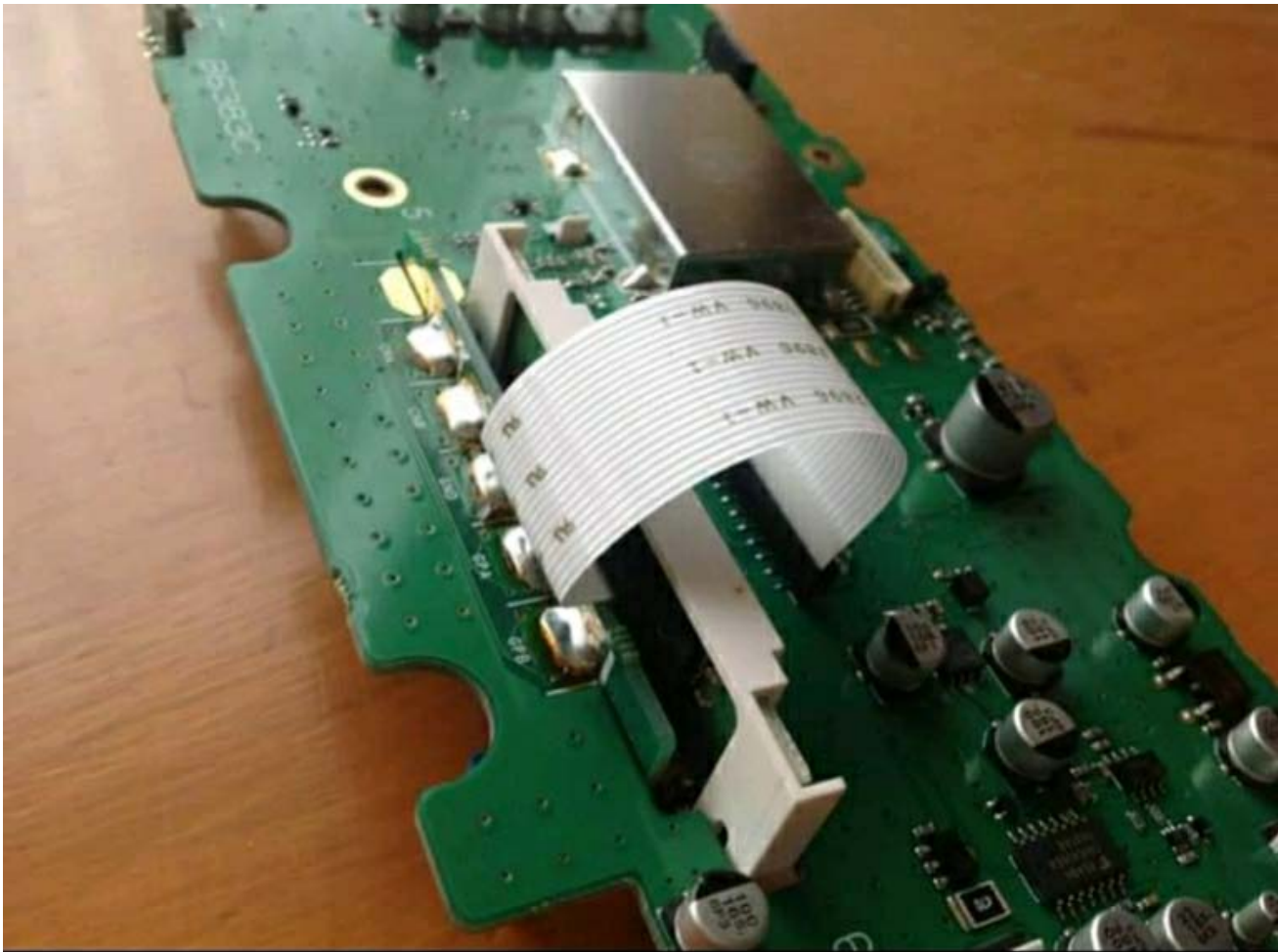
First I removed the knobs, nuts and washers.



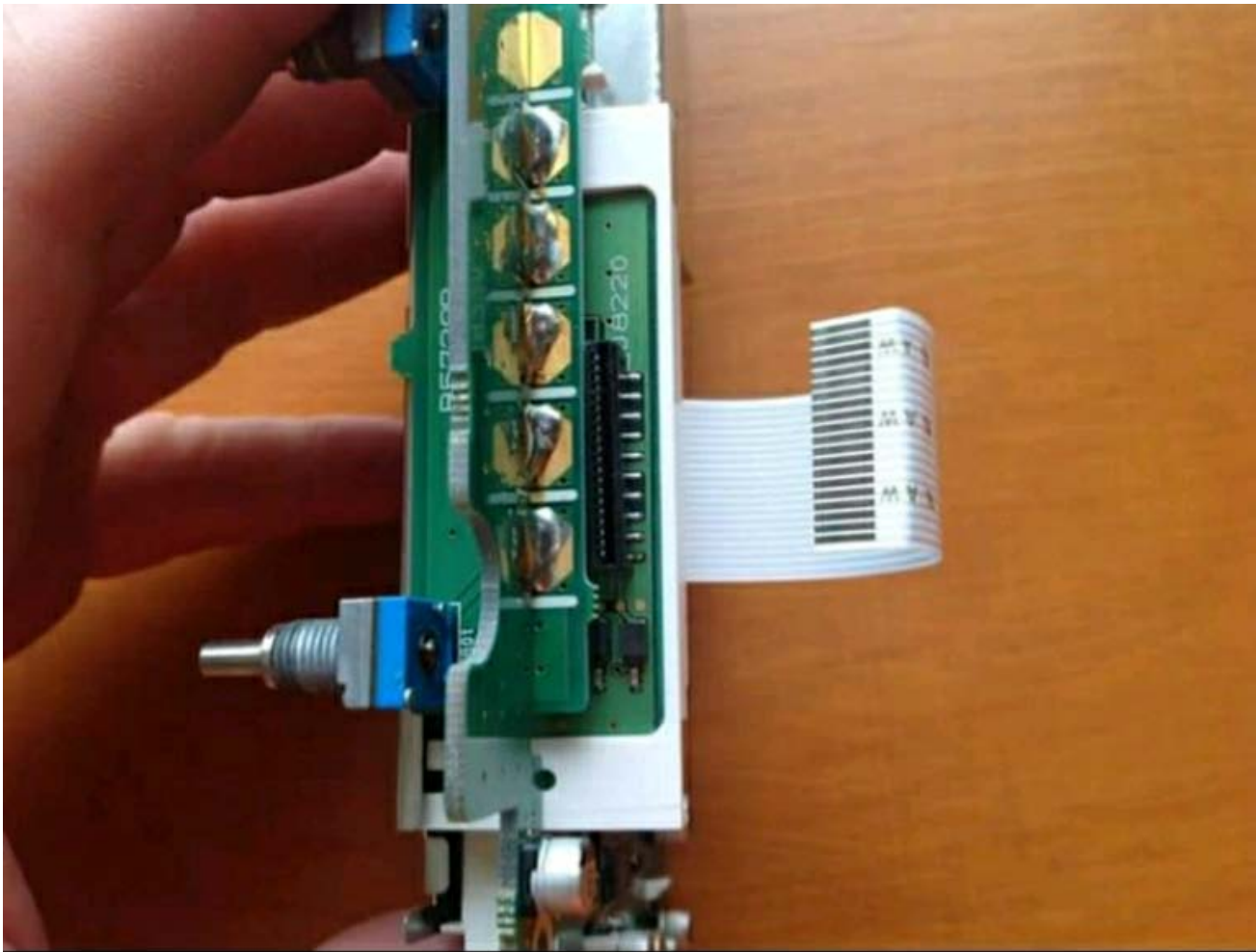
Remove the eight screws holding the back on and unplug the wiring harness from the board.



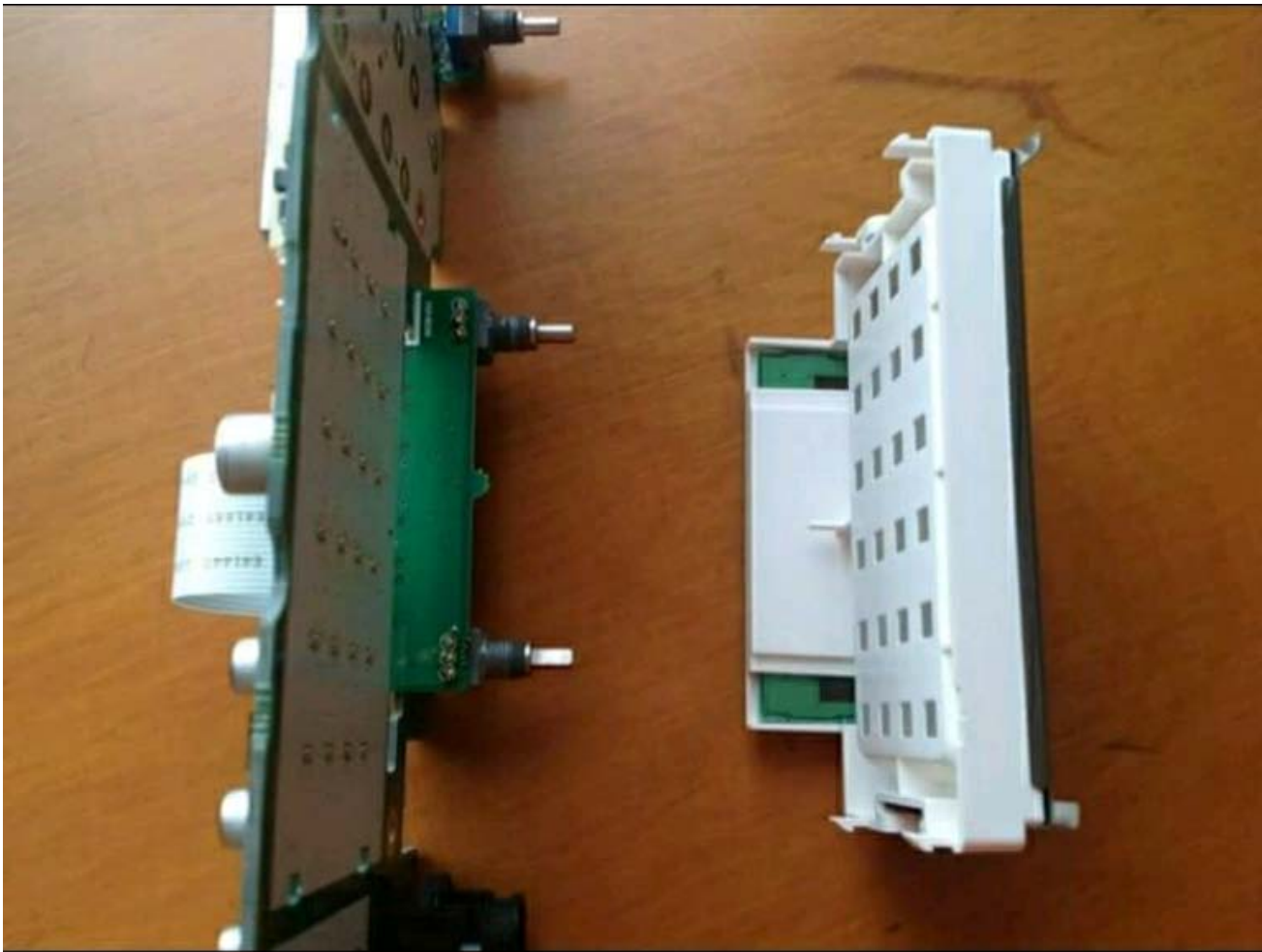
Remove the seven screws, numbered, and lift off the main board carefully.



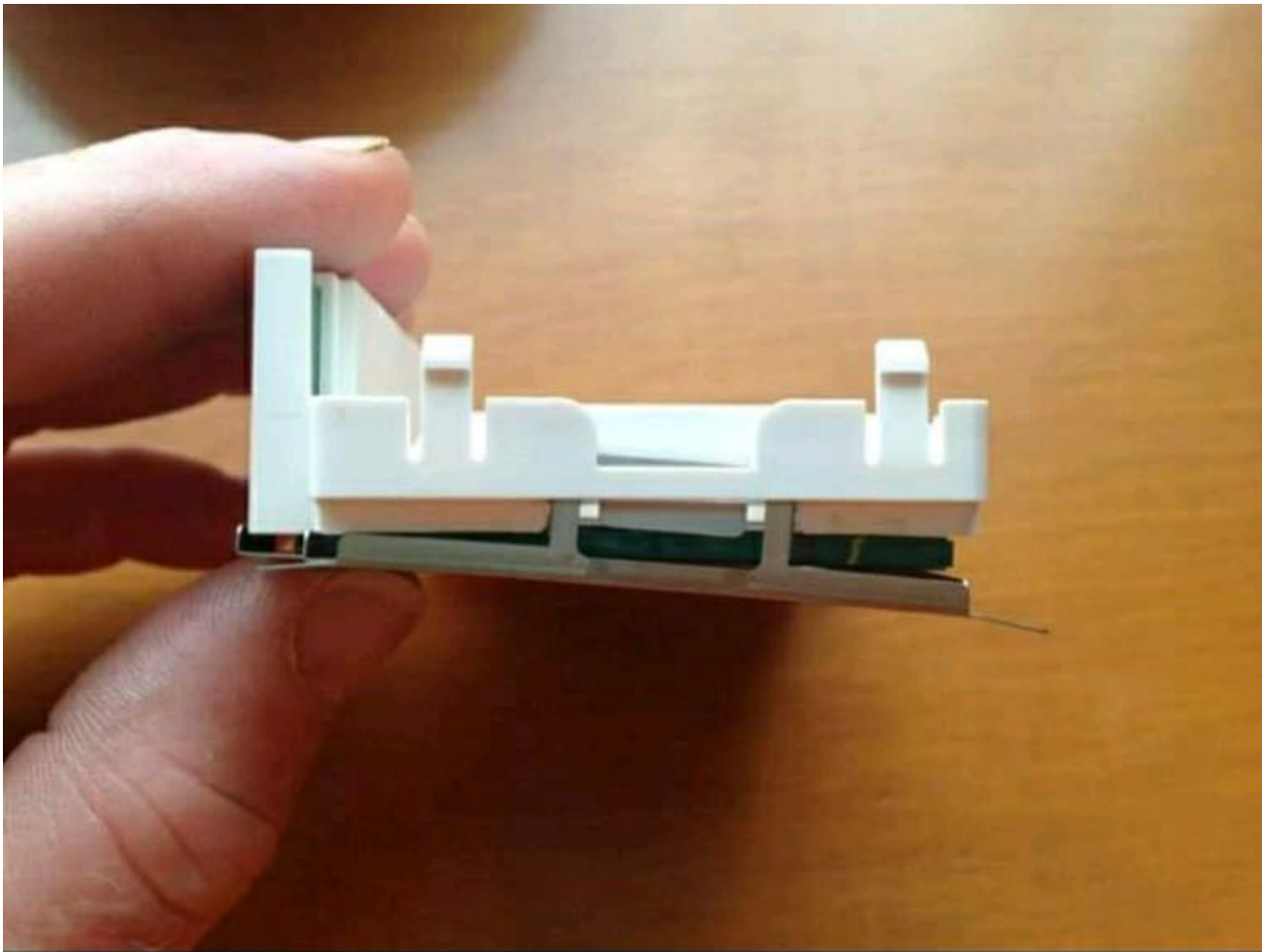
Remove the ribbon from the screen circuit board not the main board.



Do this very carefully, I used a pencil inside the ribbon with two thumbs on the ribbon to ease it off.



The white housing with the screen and its circuit board attached slides out after pushing the four white tags back.



Push back the stainless steel tabs at each end of the housing and ease off the frame.

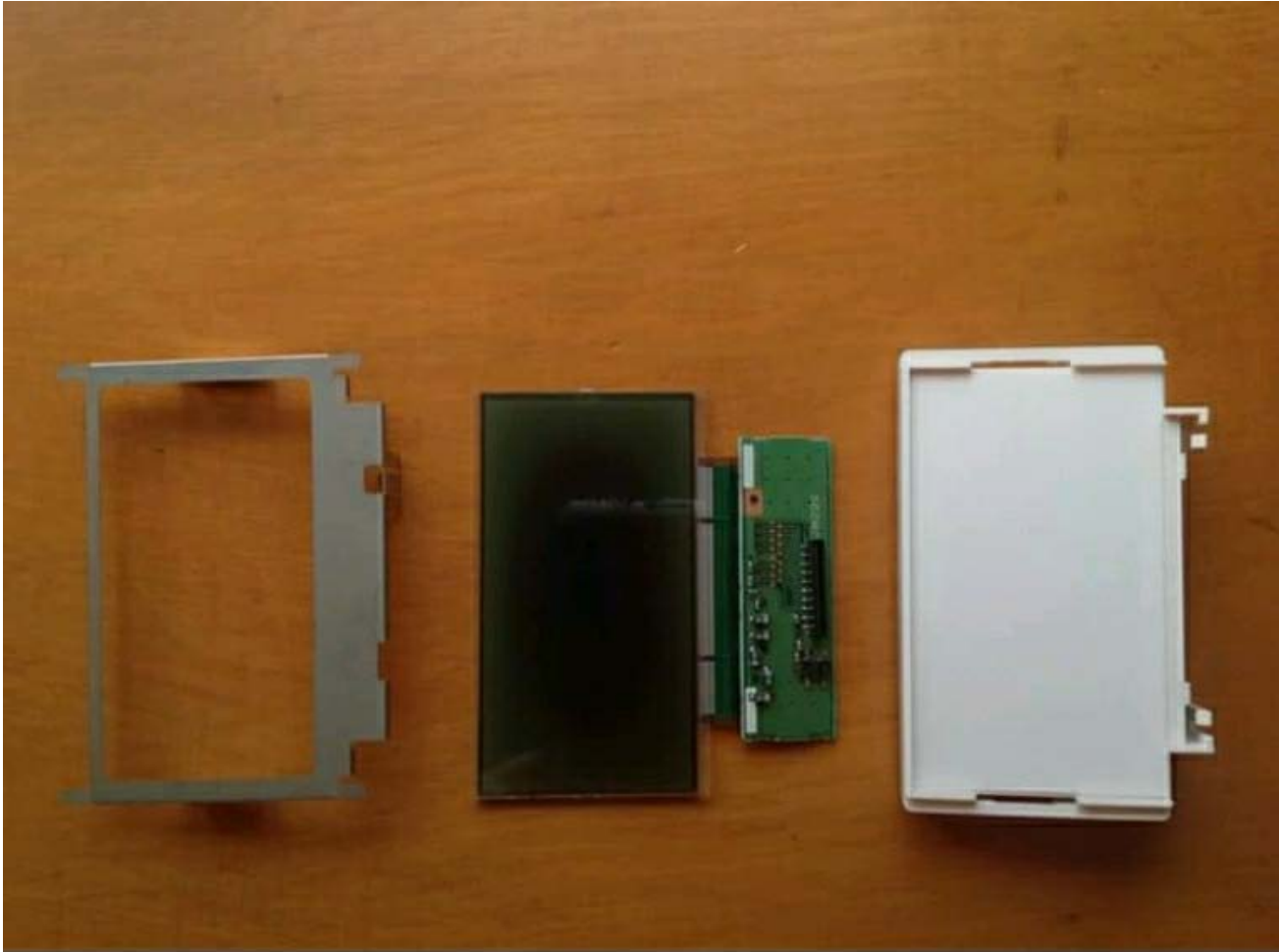


Two tabs hold the circuit board in.

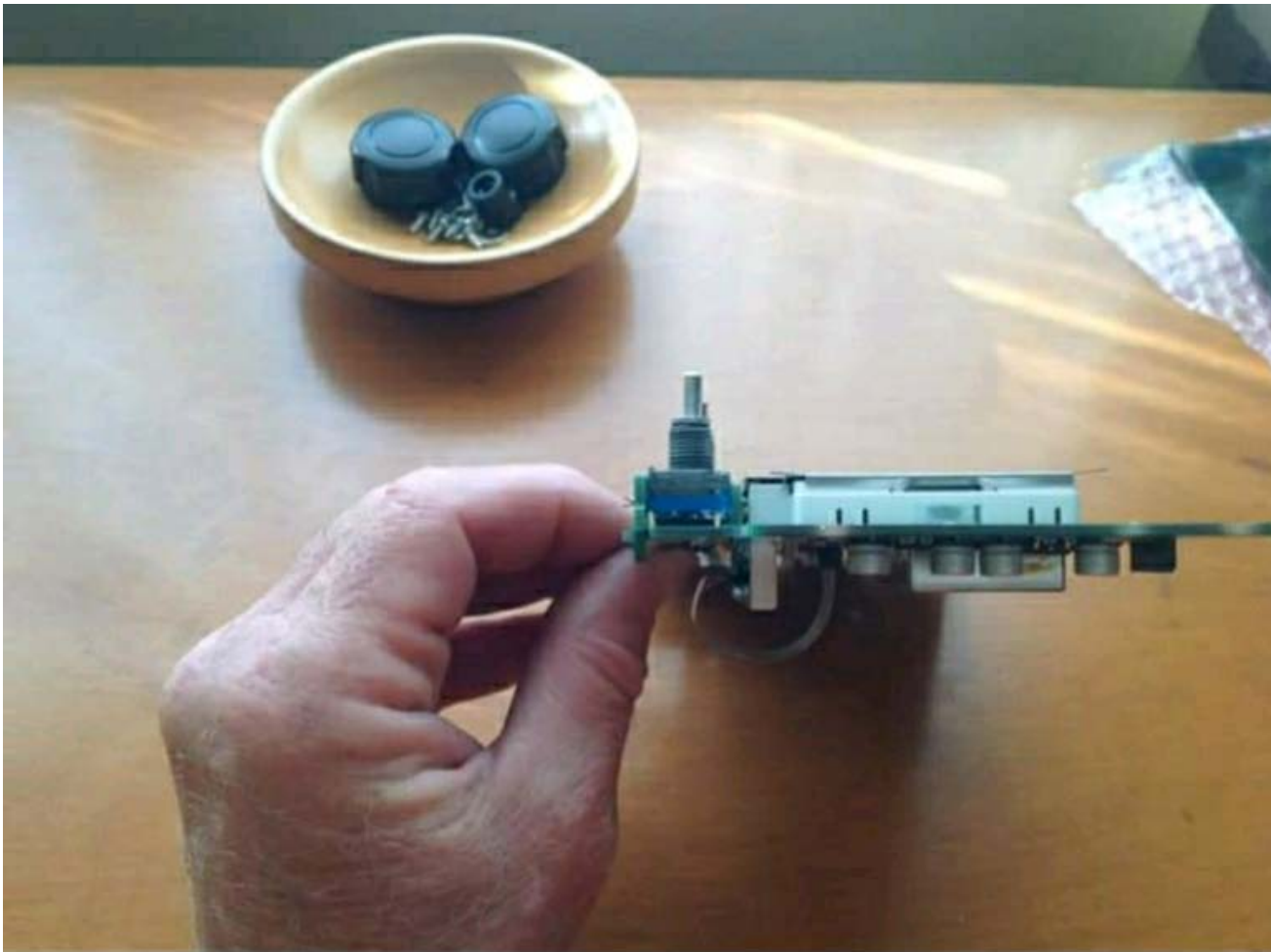


This leaves the button pads in the housing. Make sure they are snugly located before you reassemble.

801e/802 LCD SCREEN -PART 2



All apart, reassembly is exactly the opposite of removal. Note there is a white card that sits behind the screen, located in the white housing. Make sure the screen and inner face of the housing are spotless before you reassemble, it would bug you for ever if there was a bit of fluff in there.



As you reassemble, make sure the knob pots are straight so they locate back through the main housing, do not force anything!



The finished job, you can see the reflection of my iPad!