

AMATEUR RADIO W



WORLD MAP AND DXCC



C COUNTRY LIST



31

7

9

10

11

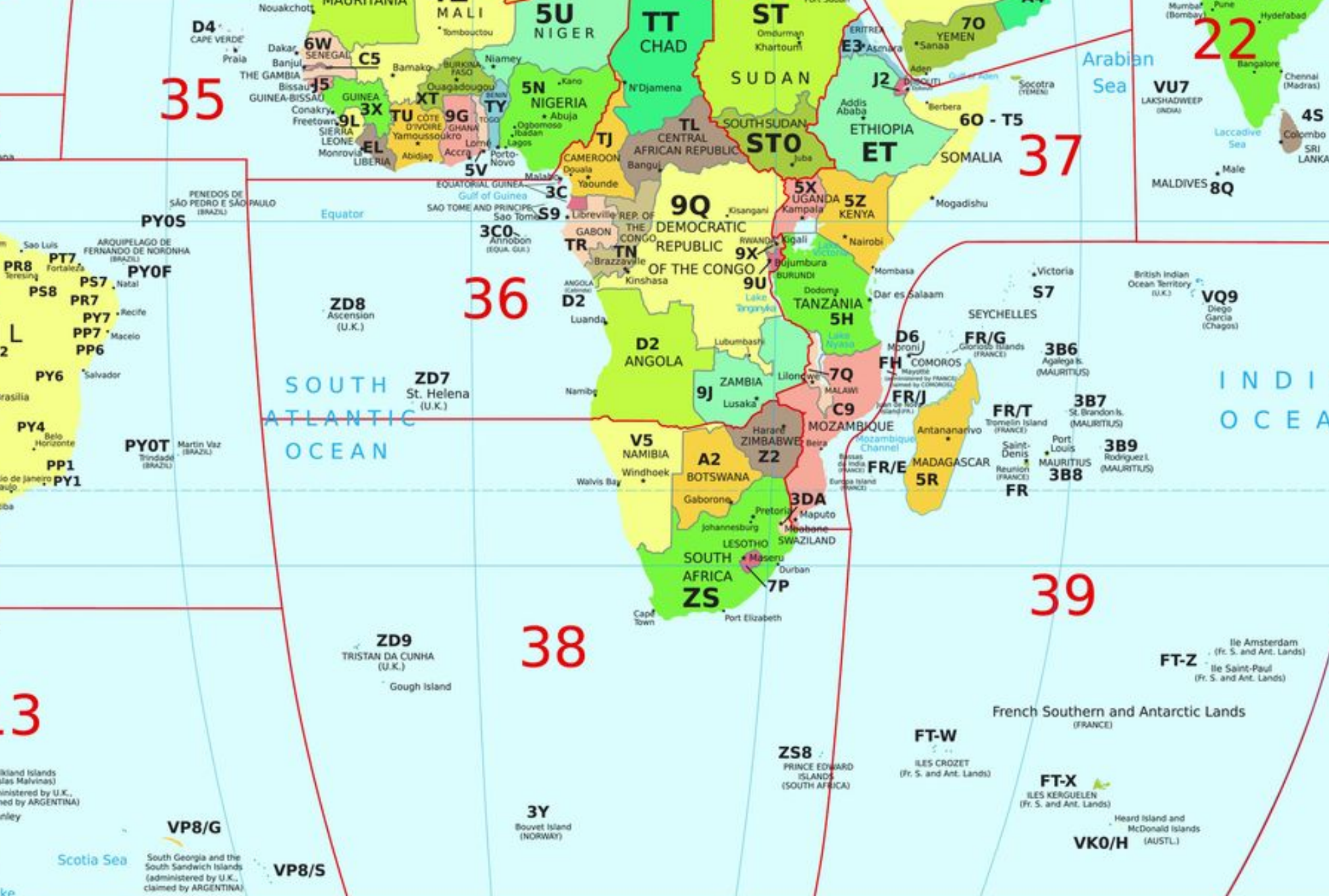
32

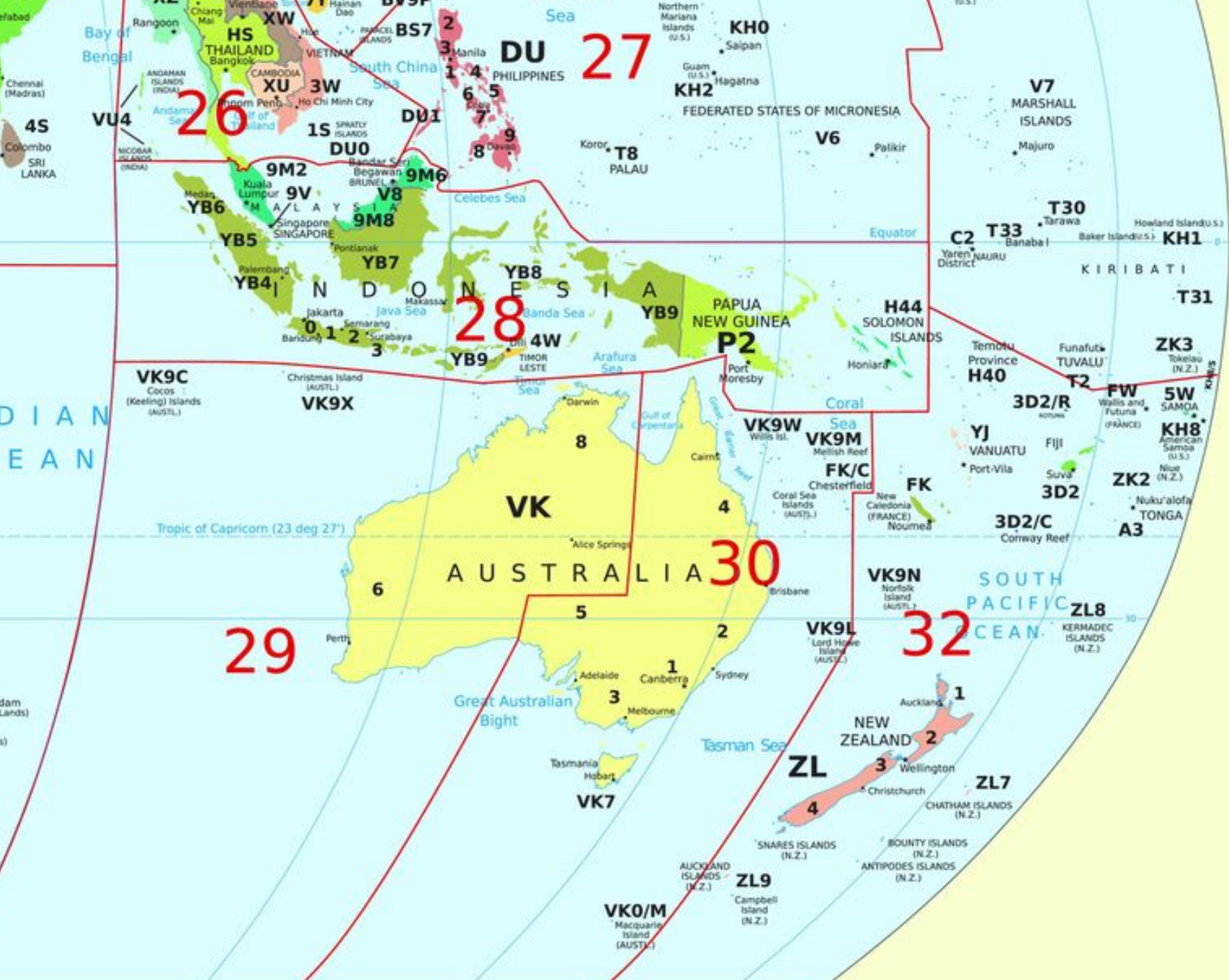
12

13

SOUTH PACIFIC OCEAN



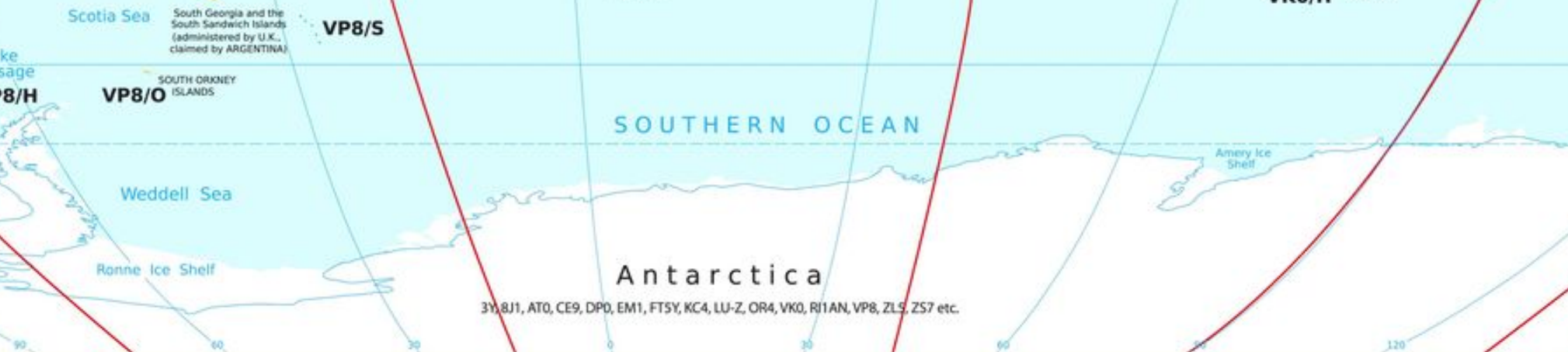






Scale 1cm : 500km
 Robinson Projection
 standard parallels 38 deg N and 38 deg S

Prefix	Entity	Cont.	CQ	ITU	Prefix	Entity	Cont.	CQ	ITU	Prefix	Entity	Cont.	CQ	ITU	Prefix	Entity	Cont.	CQ	ITU
1A	Sov. Mil. Order of Malta	EU	15	28	6V-6W	Senegal	AF	35	46	C2	Nauru	OC	31	65	EP-EQ	Iran			
1S	Sprattly Is.	AS	26	50	6Y	Jamaica	NA	8	11	C3	Andorra	EU	14	27	ER	Moldova			
3A	Monaco	EU	14	27	7O	Yemen	AS	21	39	C5	The Gambia	AF	35	46	ES	Estonia			
3B6, 7	Agalega & St. Brandon Is.	AF	39	53	7P	Lesotho	AF	38	57	C6	Bahamas	NA	8	11	ET	Ethiopia			
3B8	Mauritius	AF	39	53	7Q	Malawi	AF	37	53	C8-9	Mozambique	AF	37	53	EU-EW	Belarus			
3B9	Rodriguez I.	AF	39	53	7T-7Y	Algeria	AF	33	37	CA-CE, XQ, XR	Chile	SA	12	14	EX	Kyrgyzstan			
3C	Equatorial Guinea	AF	36	47	8P	Barbados	NA	8	11	CE0Z	Juan Fernandez Is.	SA	12	14	EY	Tajikistan			
3C0	Annobon I.	AF	36	52	8Q	Maldives	AS/AF	22	41	CE0X	San Felix & San Ambrosio	SA	12	14	EZ	Turkmenistan			
3D2	Fiji	OC	32	56	8R	Guyana	SA	9	12	CE0	Easter I.	SA	12	63	F	France			
3D2	Rotuma I.	OC	32	56	9A	Croatia	EU	15	28	CE9/KC4*	Antarctica	AN (C)	(B)	FG, TO	Guadeloupe				
3D2	Conway Reef	OC	32	56	9G	Ghana	AF	35	46	CM, CO	Cuba	NA	8	11	FH, TO	Mayotte			
3DA	Swaziland	AF	38	57	9H	Malta	EU	15	28	CN	Morocco	AF	33	37	FJ, TO	Saint Barthelemy			
3V	Tunisia	AF	33	37	9I-9J	Zambia	AF	36	53	CP	Bolivia	SA	10	12	FK, TX	Chesterfield Is.			
3W, XV	Viet Nam	AS	26	49	9K	Kuwait	AS	21	39	CQ-CT	Portugal	EU	14	37	FK, TX	New Caledonia			
3X	Guinea	AF	35	46	9L	Sierra Leone	AF	35	46	CQ-CT3, CQ-CT9	Madeira Is.	AF	33	36	FM, TO	Martinique			
3Y	Bouvet	AF	38	67	9M2, 4	West Malaysia	AS	28	54	CU, CQ-CT8, CR1, CR2	Azores	EU	14	36	FO, TO	Austral I.			
3Y	Peter 1 I.	AN	12	72	9M6, 8	East Malaysia	OC	28	54	CV-CX	Uruguay	SA	13	14	FO, TX	Marquesas Is.			
4J, 4K	Azerbaijan	AS	21	29	9N	Nepal	AS	22	42	CY0	Sable I.	NA	5	9	FO, TX	Clipperton I.			
4L	Georgia	AS	21	29	9O-9T	Dem. Rep. of Congo	AF	36	52	CY9	St. Paul I.	NA	5	9	FO, TX	French Polynesia			
4O	Montenegro	EU	15	28	9U	Burundi	AF	36	52	D2-3	Angola	AF	36	52	FP	St. Pierre & Miquelon			
4S	Sri Lanka	AS	22	41	9V	Singapore	AS	28	54	D4	Cape Verde	AF	35	46	FR, TO	Reunion I.			
4U_ITU	ITU HQ	EU	14	28	9X	Rwanda	AF	36	52	D6	Comoros	AF	39	53	FS, TO	Saint Martin			
4U_UN	United Nations HQ	NA	5	8	9Y-9Z	Trinidad & Tobago	SA	9	11	DA-DR	Fed. Rep. of Germany	EU	14	28	FT/G, TO	Glorioso Is.			
4W	Timor - Leste	OC	28	54	A2	Botswana	AF	38	57	DU-DZ, 4D-4I	Philippines	OC	27	50	FT/J, E, TO	Juan de Nova, Europa			
4X, 4Z	Israel	AS	20	39	A3	Tonga	OC	32	62	E3	Eritrea	AF	37	48	FT/T, TO	Tromelin I.			
5A	Libya	AF	34	38	A4	Oman	AS	21	39	E4	Palestine	AF	20	39	FT/W	Crozet I.			
5B, C4, H2, P3	Cyprus	AS	20	39	A5	Bhutan	AS	22	41	E5	S. Cook Is.	OC	32	62	FT/X	Kerguelen Is.			
5H-5I	Tanzania	AF	37	53	A6	United Arab Emirates	AS	21	39	E7	N. Cook Is.	OC	32	62	FT/Z	Amsterdam & St. Paul Is.			
5N	Nigeria	AF	35	46	A7	Qatar	AS	21	39	E5	Bosnia-Herzegovina	EU	15	28	FW	Wallis & Futuna Is.			
5R	Madagascar	AF	39	53	A9	Bahrain	AS	21	39	EA6-EH6	Balearic Is.	EU	14	37	FY	French Guiana			
5T	Mauritania	AF	35	46	AP	Pakistan	AS	21	41	EA8-EH8	Canary Is.	AF	33	36	G, GX, M	England			
5U	Niger	AF	35	46	B	China	AS	23, 24	(A)	EA9-EH9	Ceuta & Melilla	AF	33	37	GD, GT	Isle of Man			
5V	Togo	AF	35	46	BS7H	Scarborough Reef	AS	27	50	EA-EH	Spain	EU	14	37	GI, GN	Northern Ireland			
5W	Samoa	OC	32	62	BU-BX	Taiwan	AS	24	44	EI-EJ	Ireland	EU	14	27	GJ, GH	Jersey			
5X	Uganda	AF	37	48	BV9P, BQ9P	Pratas I.	AS	24	44	EK	Armenia	AS	21	29	GM, GS	Scotland			
5Y-5Z	Kenya	AF	37	48						EL	Liberia	AF	35	46	GU, GP	Guernsey			
															GW, GC	Wales			



Cont.	CQ	ITU	Prefix	Entity	Cont.	CQ	ITU	Prefix	Entity	Cont.	CQ	ITU	Prefix	Entity	Cont.	CQ	ITU
AS	21	40	H4	Solomon Is.	OC	28	51	KH1	Baker & Howland Is.	OC	31	61	PA-PI	Netherlands	EU	14	27
EU	16	29	H40	Temotu Province	OC	32	51	KH2	Guam	OC	27	64	PJ2	Curacao	SA	9	11
EU	15	29	HA, HG	Hungary	EU	15	28	KH3	Johnston I.	OC	31	61	PJ4	Bonaire	SA	9	11
AF	37	48	HB	Switzerland	EU	14	28	KH4	Midway I.	OC	31	61	PJ5,6	Saba & St. Eustatius	NA	8	11
EU	16	29	HB0	Liechtenstein	EU	14	28	KH5	Palmyra & Jarvis Is.	OC	31	61	PJ7	St Maarten	NA	8	11
AS	17	30	HC8-HD8	Galapagos Is.	SA	10	12	KH5K	Kingman Reef	OC	31	61	PP0-PY0F	Fernando de Noronha	SA	11	13
AS	17	30	HC-HD	Ecuador	SA	10	12	KH6,7	Hawaii	OC	31	61	PP0-PY0S	St. Peter & St. Paul Rocks	SA	11	13
AS	17	30	HH	Haiti	NA	8	11	KH7K	Kure I.	OC	31	61	PP0-PY0T	Trindade & Martim Vaz Is.	SA	11	15
EU	14	27	HI	Dominican Republic	NA	8	11	KH8	American Samoa	OC	32	62	PP-PY	Brazil	SA	11	(D)
NA	8	11	HJ-HK, 5J-5K	Colombia	SA	9	12	KH8	Swains I.	OC	32	62	PZ	Suriname	SA	9	12
AF	39	53	HK0	San Andres & Providencia	NA	7	11	KH9	Wake I.	OC	31	65	RI1FJ	Franz Josef Land	EU	40	75
NA	8	11	HK0	Malpelo I.	SA	9	12	KL,AL,NL,WL	Alaska	NA	1	1,2	RI1MV	Malj Vysotskij I.	EU	16	29
OC	30	56	HL, 6K-6N	Republic of Korea	AS	25	44	KP1	Navassa I.	NA	8	11	S0	Western Sahara	AF	33	46
OC	32	56	HO-HP	Panama	NA	7	11	KP2	Virgin Is.	NA	8	11	S2	Bangladesh	AS	22	41
NA	8	11	HQ-HR	Honduras	NA	7	11	KP3,4	Puerto Rico	NA	8	11	S5	Slovenia	EU	15	28
OC	32	63	HS, E2	Thailand	AS	26	49	KP5	Desecheo I.	NA	8	11	S7	Seychelles	AF	39	53
OC	31	63	HV	Vatican	EU	15	28	LA-LN	Norway	EU	14	18	S9	Sao Tome & Principe	AF	36	47
NA	7	10	HZ	Saudi Arabia	AS	21	39	LO-LW	Argentina	SA	13	14	SA-SM,75,85	Sweden	EU	14	18
OC	32	63	I	Italy	EU	15	28	LX	Luxembourg	EU	14	27	SN-SR	Poland	EU	15	28
NA	5	9	ISO, IMO	Sardinia	EU	15	28	LY	Lithuania	EU	15	29	ST0	South Sudan	AF	34	47
AF	39	53	J2	Djibouti	AF	37	48	LZ	Bulgaria	EU	20	28	ST	Sudan	AF	34	47
NA	8	11	J3	Grenada	NA	8	11	OA-OC	Peru	SA	10	12	SU	Egypt	AF	34	38
AF	39	53	J5	Guinea-Bissau	AF	35	46	OD	Lebanon	AS	20	39	SV/A	Mount Athos	EU	20	28
AF	39	53	J6	St. Lucia	NA	8	11	OE	Austria	EU	15	28	SV5, J45	Dodecanese	EU	20	28
AF	39	53	J7	Dominica	NA	8	11	OF-OI	Finland	EU	15	18	SV9, J49	Crete	EU	20	28
AF	39	68	J8	St. Vincent	NA	8	11	OH0	Aland Is.	EU	15	18	SV-SZ, J4	Greece	EU	20	28
AF	39	68	JA-JS, 7J-7N	Japan	AS	25	45	OJ0	Market Reef	EU	15	18	T2	Tuvalu	OC	31	65
AF	39	68	JD1	Minami Torishima	OC	27	90	OK-OL	Czech Republic	EU	15	28	T30	W. Kiribati (Gilbert Is.)	OC	31	65
OC	32	62	JD1	Ogasawara	AS	27	45	OM	Slovak Republic	EU	15	28	T31	C. Kiribati (British Phoenix Is.)	OC	31	62
SA	9	12	JT-JV	Mongolia	AS	23	32	ON-OT	Belgium	EU	14	27	T32	E. Kiribati (Line Is.)	OC	31	61
EU	14	27	JW	Svalbard	EU	40	18	OU-OW, OZ	Denmark	EU	14	18	T33	Banaba I. (Ocean I.)	OC	31	65
EU	14	27	JX	Jan Mayen	EU	40	18	OX	Greenland	NA	40	5	T5, 60	Somalia	AF	37	48
EU	14	27	JY	Jordan	AS	20	39	OY	Faroe Is.	EU	14	18	T7	San Marino	EU	15	28
EU	14	27	K,W,N, AA-AK	United States of America	NA	3-5	6-8	P2	Papua New Guinea	OC	28	51	T8	Palau	OC	27	64
EU	14	27	KG4	Guantanamo Bay	NA	8	11	P4	Aruba	SA	9	11	TA-TC	Turkey	EU/AS	20	39
EU	14	27	KH0	Mariana Is.	OC	27	64	P5	DPR of Korea	AS	25	44	TF	Iceland	EU	40	17



UKRAINE Independent state
 Bermuda Dependency or area of special sovereignty
 Sicily / AZORES Island / island group
 ★ Capital

ITU	Prefix	Entity	Cont.	CQ	ITU	Prefix	Entity	Cont.	CQ	ITU	Prefix	Entity	Cont.	CQ	ITU
27	TG, TD	Guatemala	NA	7	12	VP2E	Anguilla	NA	8	11	Z2	Zimbabwe	AF	38	53
11	TI, TE	Costa Rica	NA	7	11	VP2M	Montserrat	NA	8	11	Z3	Macedonia	EU	15	28
11	TI9	Cocos I.	NA	7	12	VP2V	British Virgin Is.	NA	8	11	ZA	Albania	EU	15	28
11	TJ	Cameroon	AF	36	47	VP5	Turks & Caicos Is.	NA	8	11	ZB2	Gibraltar	EU	14	37
11	TK	Corsica	EU	15	28	VP6	Pitcairn I.	OC	32	63	ZC4	UK Sov. Base Areas on Cyprus	AS	20	39
13	TL	Central Africa	AF	36	47	VP8	Ducie I.	OC	32	63	ZD7	St. Helena	AF	36	66
13	TN	Congo (Republic of the)	AF	36	52	VP8	Falkland Is.	SA	13	16	ZD8	Ascension I.	AF	36	66
15	TR	Gabon	AF	36	52	VP8, LU	South Georgia I.	SA	13	73	ZD9	Tristan da Cunha & Gough I.	AF	38	66
(D)	TT	Chad	AF	36	47	VP8, LU	South Orkney Is.	SA	13	73	ZF	Cayman Is.	NA	8	11
12	TU	Cote d'Ivoire	AF	35	46	VP8, LU	South Sandwich Is.	SA	13	73	ZK2	Niue	OC	32	62
75	TY	Benin	AF	35	46	VP8, LU, CE9, HF0	South Shetland Is.	SA	13	73	ZK3	Tokelau Is.	OC	31	62
29	TZ	Mali	AF	35	46	VP9	Bermuda	NA	5	11	ZL7	Chatham Is.	OC	32	60
46	UA-UI2F, RA-RZ2F	Kaliningrad	EU	15	29	VQ9	Chagos Is.	AF	39	41	ZL8	Kermadec Is.	OC	32	60
41	UA-UI, RA-RZ1-7	European Russia	EU	16	(E)	VR	Hong Kong	AS	24	44	ZL9	Auckland & Campbell Is.	OC	32	60
28	UA-UI, RA-RZ8,9,0	Asiatic Russia	AS	(G)	(F)	VU	India	AS	22	41	ZL-ZM	New Zealand	OC	32	60
53	UJ-UM	Uzbekistan	AS	17	30	VU4	Andaman & Nicobar Is.	AS	26	49	ZP	Paraguay	SA	11	14
47	UN-UQ	Kazakhstan	AS	17	29-31	VU7	Lakshadweep Is.	AS	22	41	ZR-ZU	South Africa	AF	38	57
18	UR-UZ, EM-EO	Ukraine	EU	16	29	XA4-XI4, 4A4	Revillagigedo	NA	6	10	ZS8	Prince Edward & Marion Is.	AF	38	57
28	V2	Antigua & Barbuda	NA	8	11	XA-XI, 4B	Mexico	NA	6	10					
47	V3	Belize	NA	7	11	XT	Burkina Faso	AF	35	46					
47	V4	St. Kitts & Nevis	NA	8	11	XU	Cambodia	AS	26	49					
38	V5	Namibia	AF	38	57	XW	Laos	AS	26	49					
28	V6	Micronesia	OC	27	65	XX9	Macao	AS	24	44					
28	V7	Marshall Is.	OC	31	65	XY-XZ	Myanmar	AS	26	49					
28	V8	Brunei Darussalam	OC	28	54	YA, T6	Afghanistan	AS	21	40					
28	VA-VG, VO, VV	Canada	NA	1-5	(H)	YB-YH	Indonesia	OC	28	51					
65	VK, AX	Australia	OC	29, 30	(I)	YI	Iraq	AS	21	39					
65	VK0	Macquarie I.	OC	30	60	YJ	Vanuatu	OC	32	56					
62	VK0	Heard I.	AF	39	68	YK	Syria	AS	20	39					
61	VK9C	Cocos (Keeling) Is.	OC	29	54	YL	Latvia	EU	15	29					
65	VK9L	Lord Howe I.	OC	30	60	YN, H6-7, HT	Nicaragua	NA	7	11					
48	VK9M	Mellish Reef	OC	30	56	YO-YR	Romania	EU	20	28					
28	VK9N	Norfolk I.	OC	32	60	YS, HU	El Salvador	NA	7	11					
64	VK9W	Willis I.	OC	30	55	YT-YU	Serbia	EU	15	28					
39	VK9X	Christmas I.	OC	29	54	YV0	Aves I.	NA	8	11					
17						YV-YI, 4M	Venezuela	SA	9	12					

Continent **Zone Note**
 AF = Africa (A) 33, 42, 43, 44
 AN = Antarctica (B) 67, 69-74
 AS = Asia (C) 12, 13, 29, 30, 32, 38, 39
 EU = Europe (D) 12, 13, 15
 NA = North America (E) 19, 20, 29, 30
 OC = Oceania (F) 20-26, 30-35, 75
 SA = South America (G) 16, 17, 18, 19, 23
 (H) 2, 3, 4, 9, 75
 (I) 55, 58, 59

* - Also 3Y, 8J1, AT0, DP0, EM1, FT5Y, LU-Z, OR4, VK0, RI1AN, VP8, ZL5, Z57 etc.

Current Entities Total: 341
 July 2011 Edition
 UT0UM print