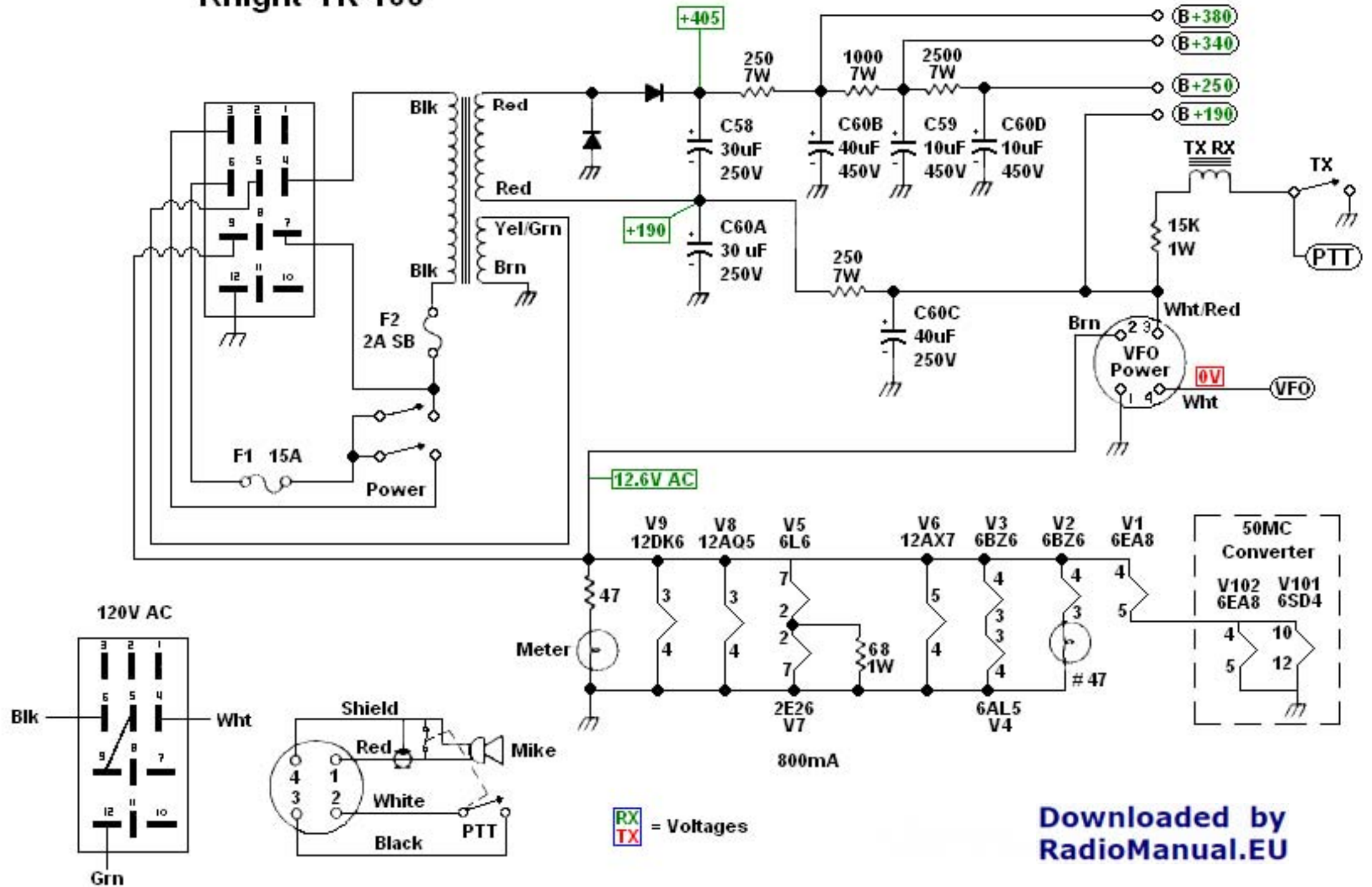
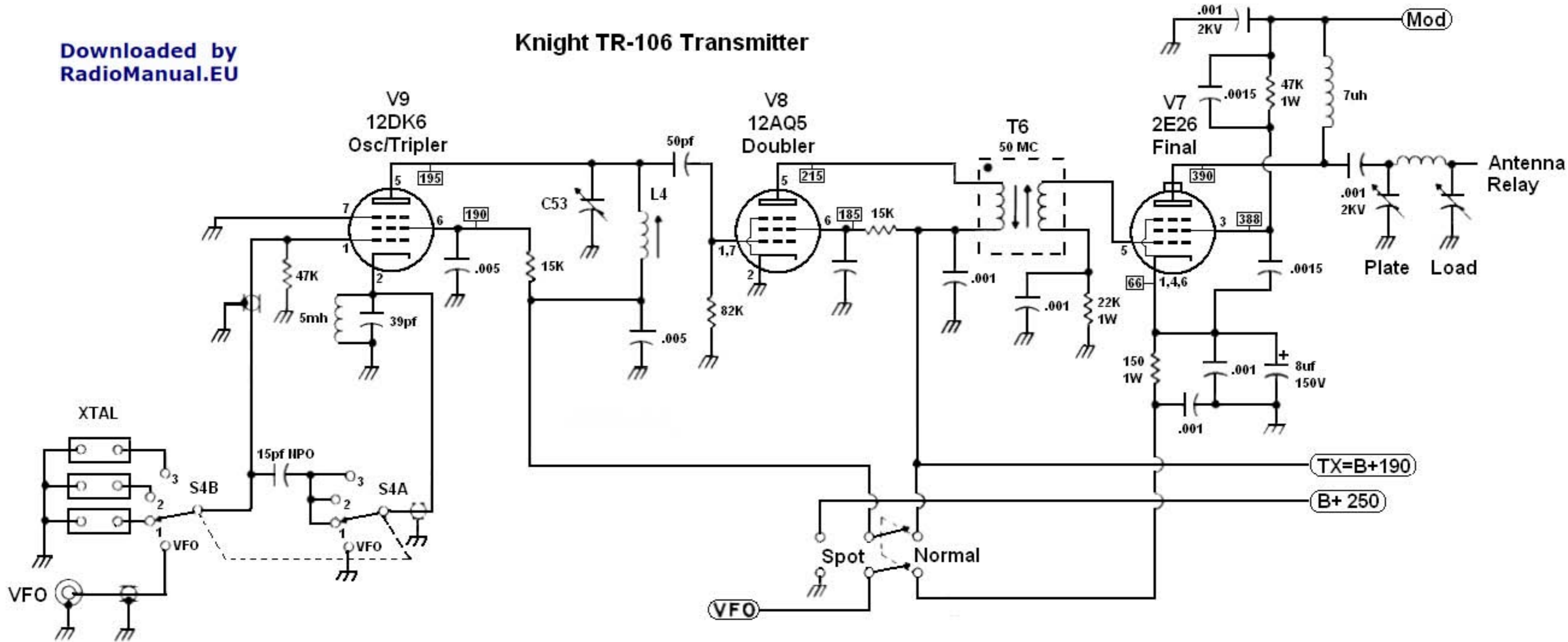


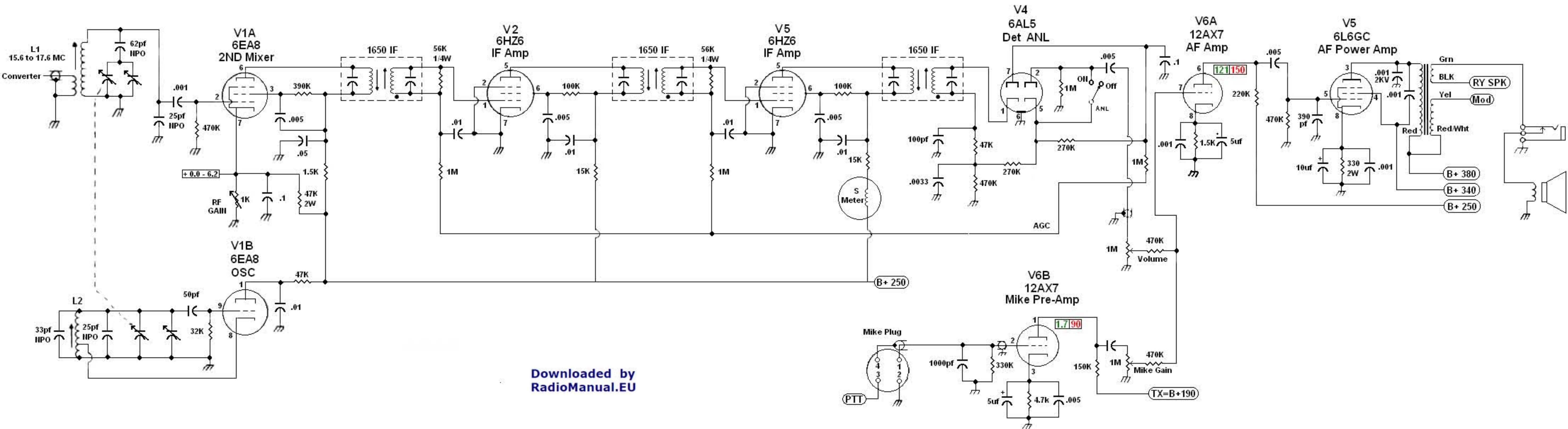
Knight TR-106



Knight TR-106 Transmitter

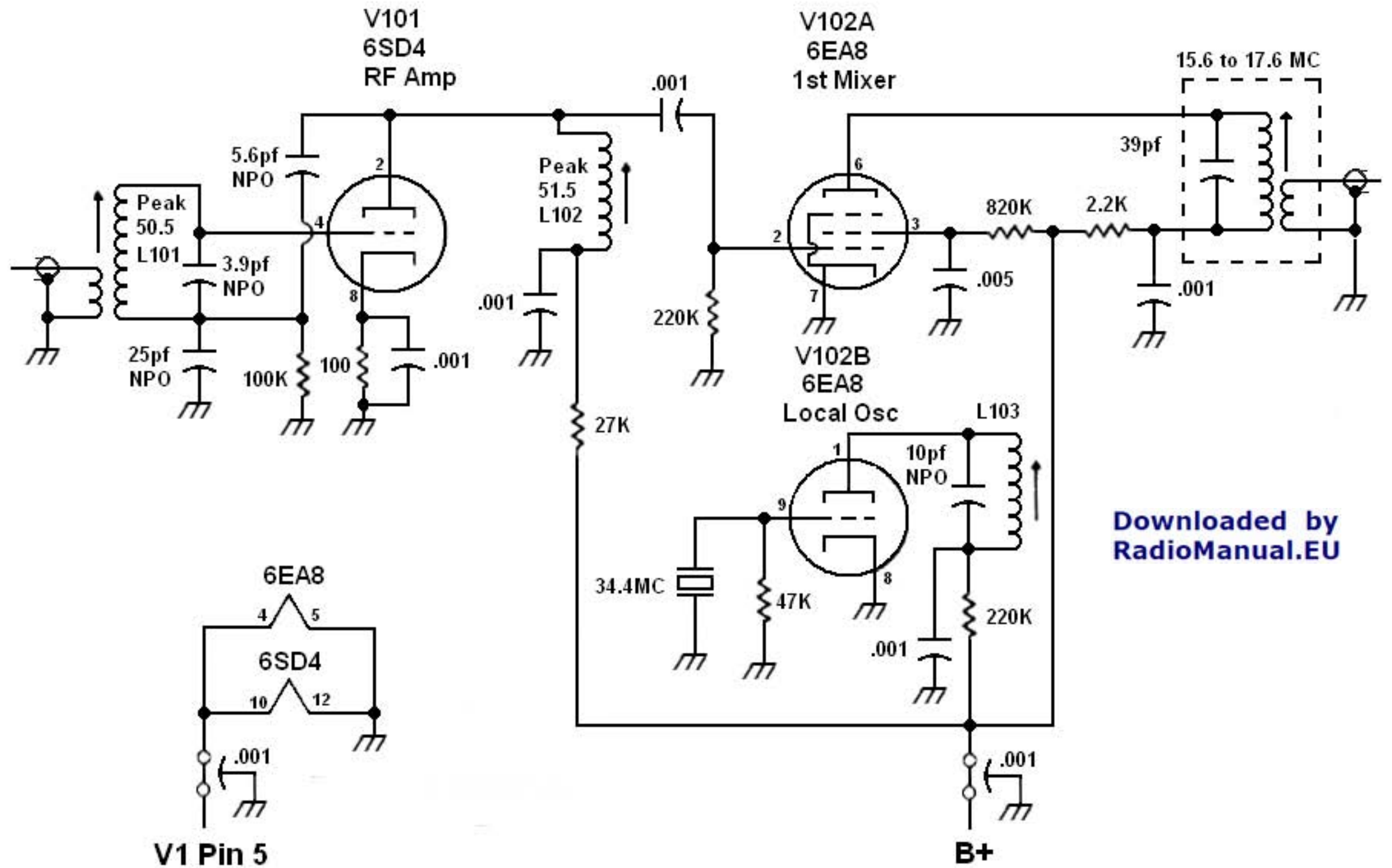


Knight TR-106 Receiver



Downloaded by
RadioManual.EU

Knight TR-106 50MC Converter



TROUBLE-SHOOTING INFORMATION

VOLTAGE CHART

		PIN								
		1	2	3	4	5	6	7	8	9
V-1	Receive	84	1.2	130	12.3 AC	6.3 AC	245	.02	0	---7.5
V-2	Receive	1.4	0	6.3 AC	12.3 AC	230	75	0	---	---
V-3	Receive	1.2	0	6 AC	12.3 AC	215	70	0	---	---
V-4	Receive	.5	.05	6 AC	0		0	-1.3	---	---
V-5	Receive	---	12.3 AC	360	340	---	---	6.1 AC	22	---
	Transmit	---	12.3 AC	328	303	---	---	6.1 AC	19.5	---
V-6	Receive	1.7	.65	0	0	12.3 AC	150	0	1.5	---
	Transmit	90	0	1.05	0	12.3 AC	121	0	1.35	---
V-7	Receive	66	6.1 AC	388	66	0	66	0	0	Plate 390
	Transmit	7.7	6.1 AC	153	7.7	†>-45	7.7	0	0	*318
V-8	Receive	-.9	0	12.3 AC	0	-1.8	-1.8	---	---	---
	Transmit	†>-75	0	12.3 AC	0	215	185	---	---	---
V-9	Receive	.56	0	12.3 AC	0	-1.8	-1.8	0	---	---
	Transmit	†>-15	.08	12.3 AC	0	195	190	0	---	---

Converter Sub Assembly—B+ terminal, 225 volts Receive,
3 volts Transmit.

All voltages taken with a VTVM with respect to chassis ground.

†Measured with a 47K isolating resistor (keep its leads to a minimum length) in series with the VTVM probe.

*DO NOT MEASURE. You may measure B+ on the B+ side of RFC-1.

RESISTANCE CHART

		PIN								
		1	2	3	4	5	6	7	8	9
V-1		54K*	470K	400K*	.8	.8	5.4K*	105K*	0	82K
V-2		2.8 meg	0	.8	.8	5.4K*	105K*	0	---	---
V-3		2.6 meg	0	2	.8	9K*	120K*	0	---	---
V-4		500K	1 meg	2	0	490K	0	500K	---	---
V-5		NC	.8	450*	1.25K*	470K	NC	.8	330	---
V-6		∞	330K	4.7K	0	.8	230K*	320K**	3.3K	4.8
V-7		NS	.8	50K*	NS	24K	NS	0	0	Plate 650*
V-8		82K	0	.8	0	∞*	∞*	82K	---	---
V-9		47K	12	.8	0	∞*	∞*	0	---	---

NC—no connection

NS—not significant

*—with respect to junction of CR-2 and C-58.

**—will vary with setting of MIC GAIN control.

Resistance readings taken with a VTVM with respect to chassis ground.

Controls set as follows:

ANL—ON

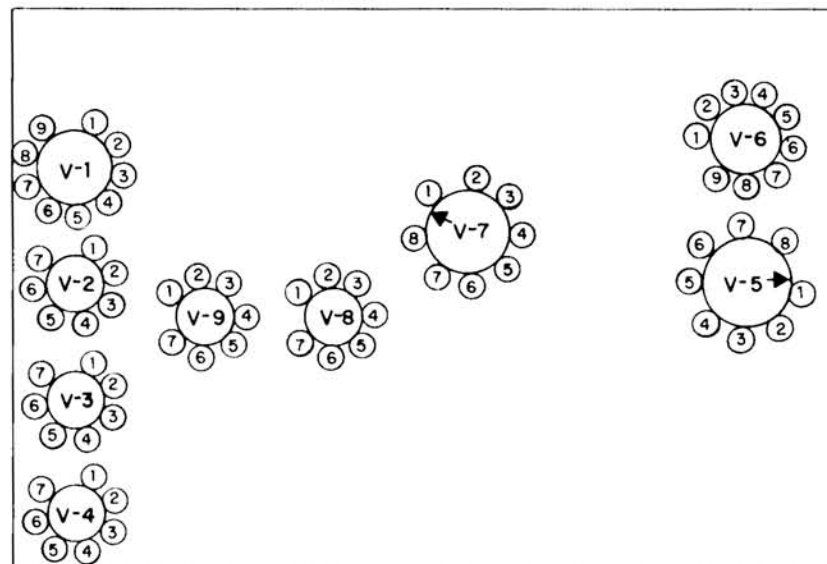
TRANSMIT-RECEIVE in RECEIVE

POWER OFF

SPOT OFF

RF and AF GAIN in maximum counterclockwise position

FRONT



TUBE LOCATION (bottom view)