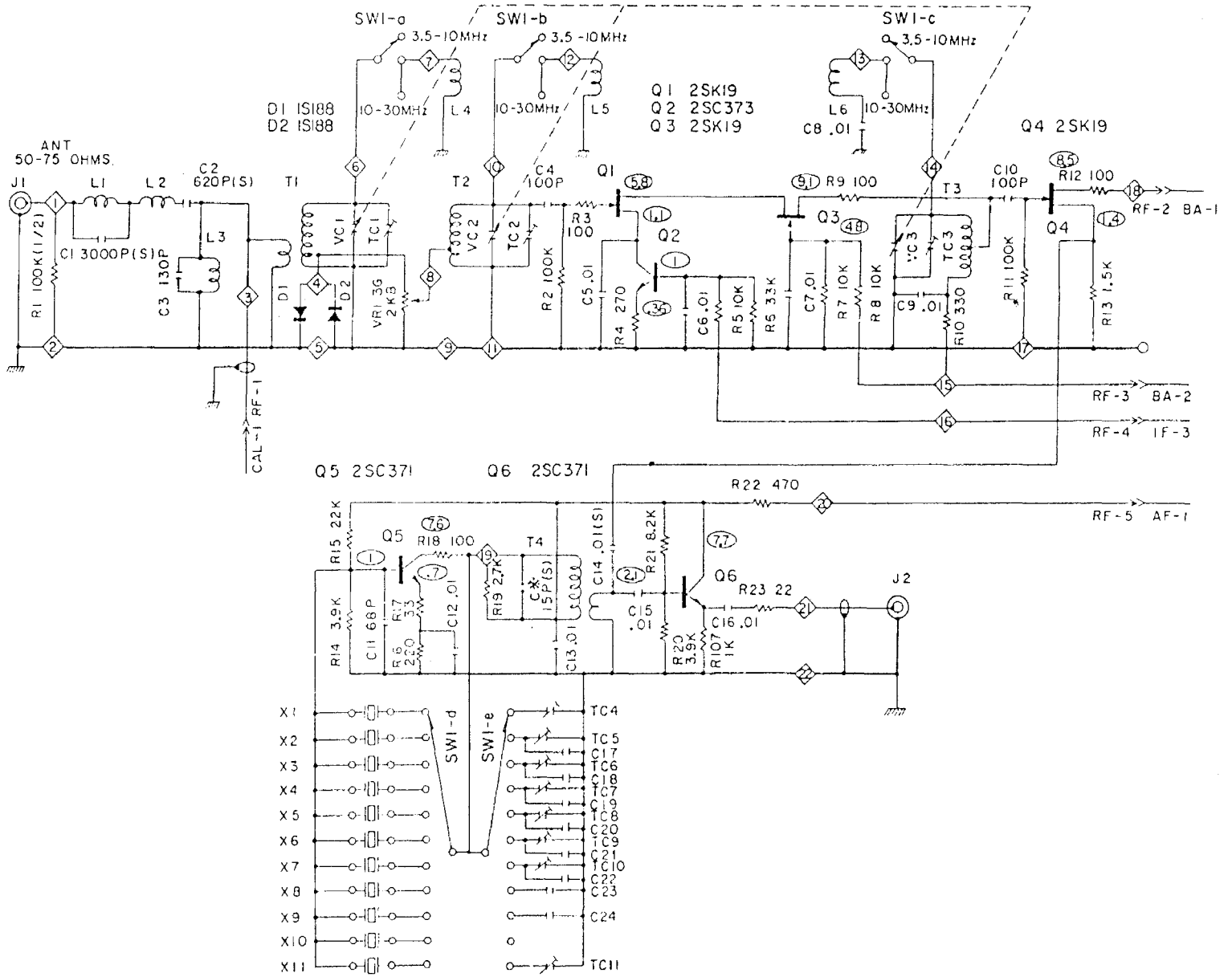
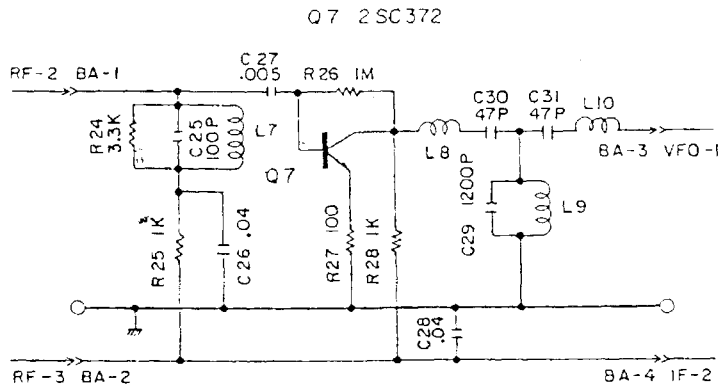
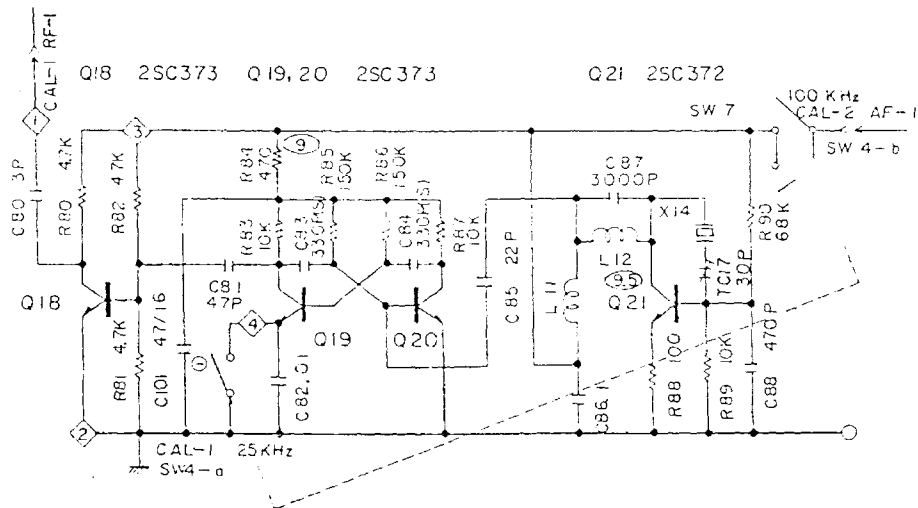


SCHEMATIC DIAGRAM OF RF AMP

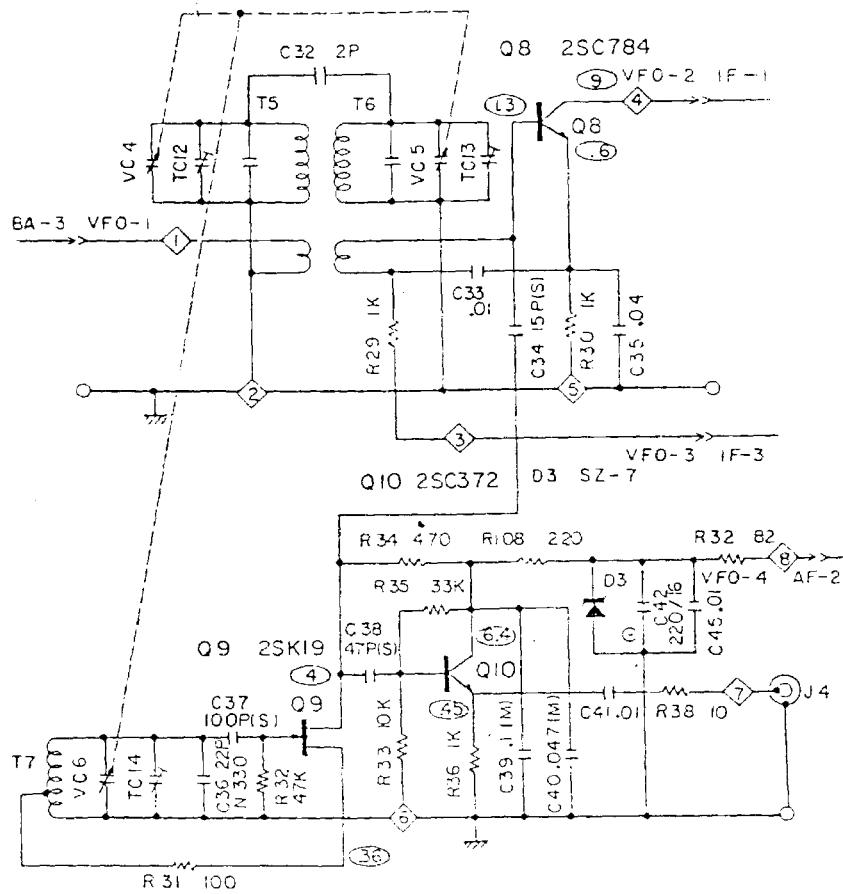




SCHEMATIC DIAGRAM OF BUFFER AMP

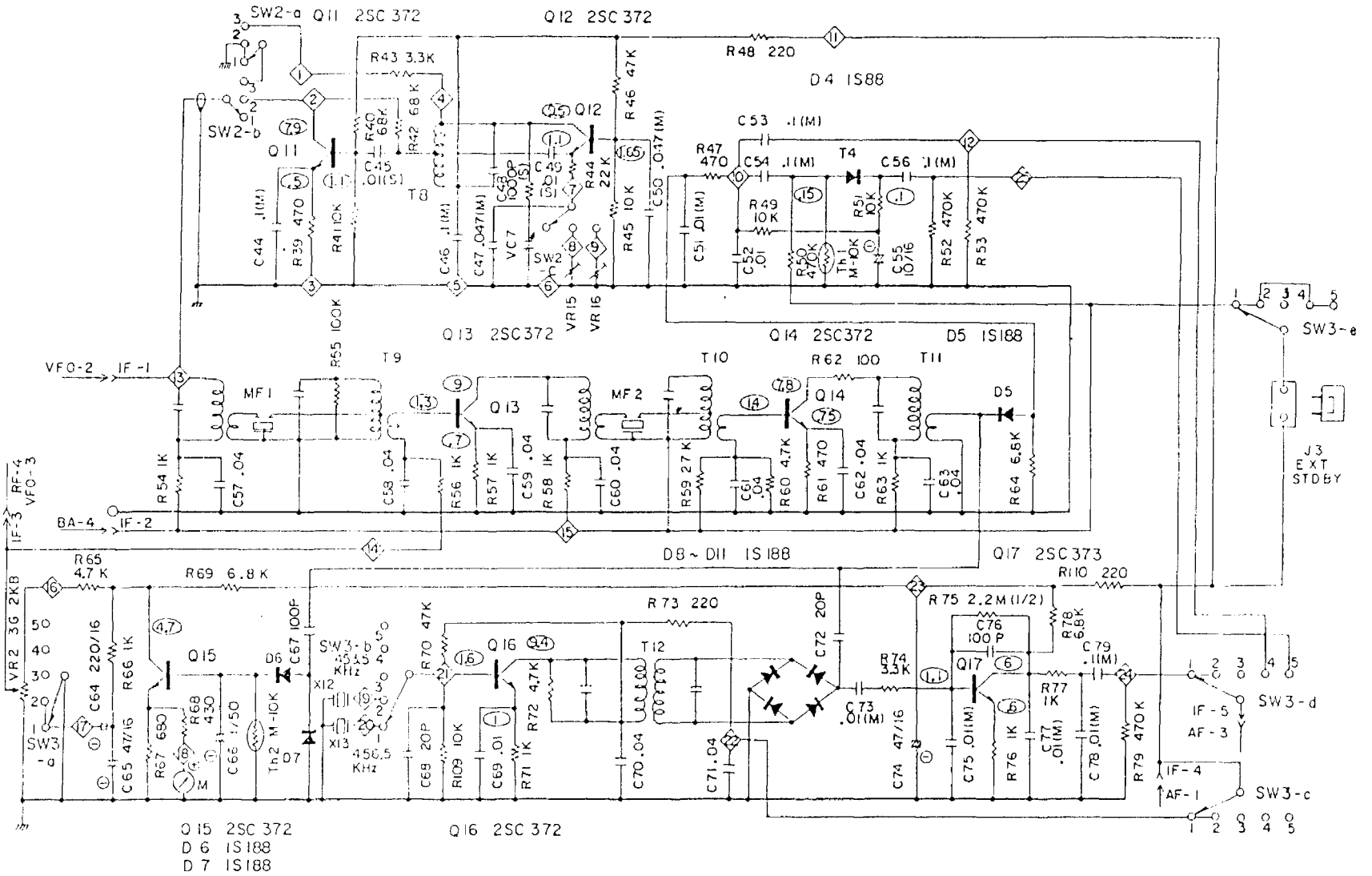


SCHEMATIC DIAGRAM OF CALIBRATOR

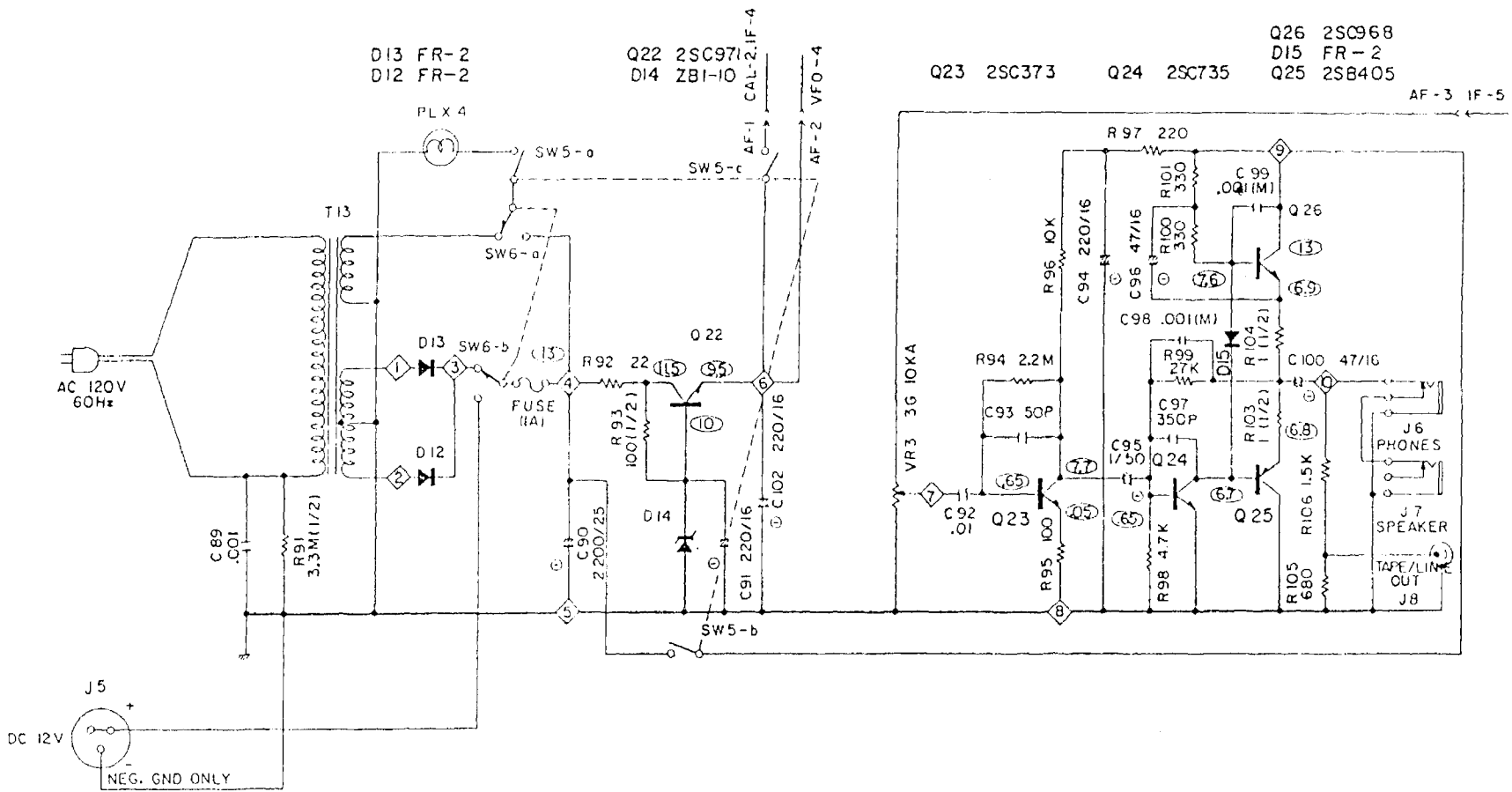


SCHMATIC DIAGRAM OF VFO SECTION

SCHEMATIC DIAGRAM OF I.F. AMP SECTION



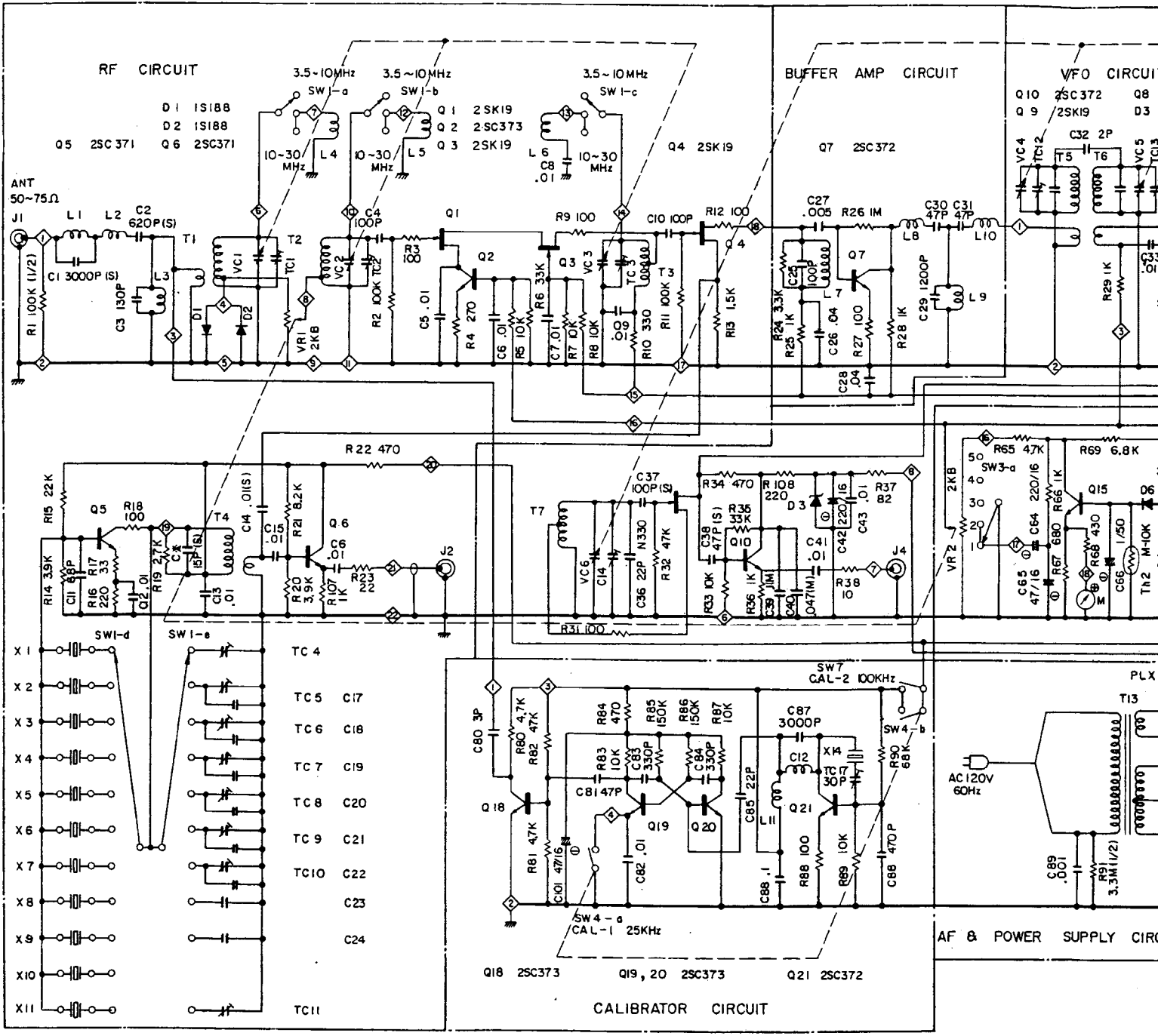
SCHEMATIC DIAGRAM OF POWER SUPPLY



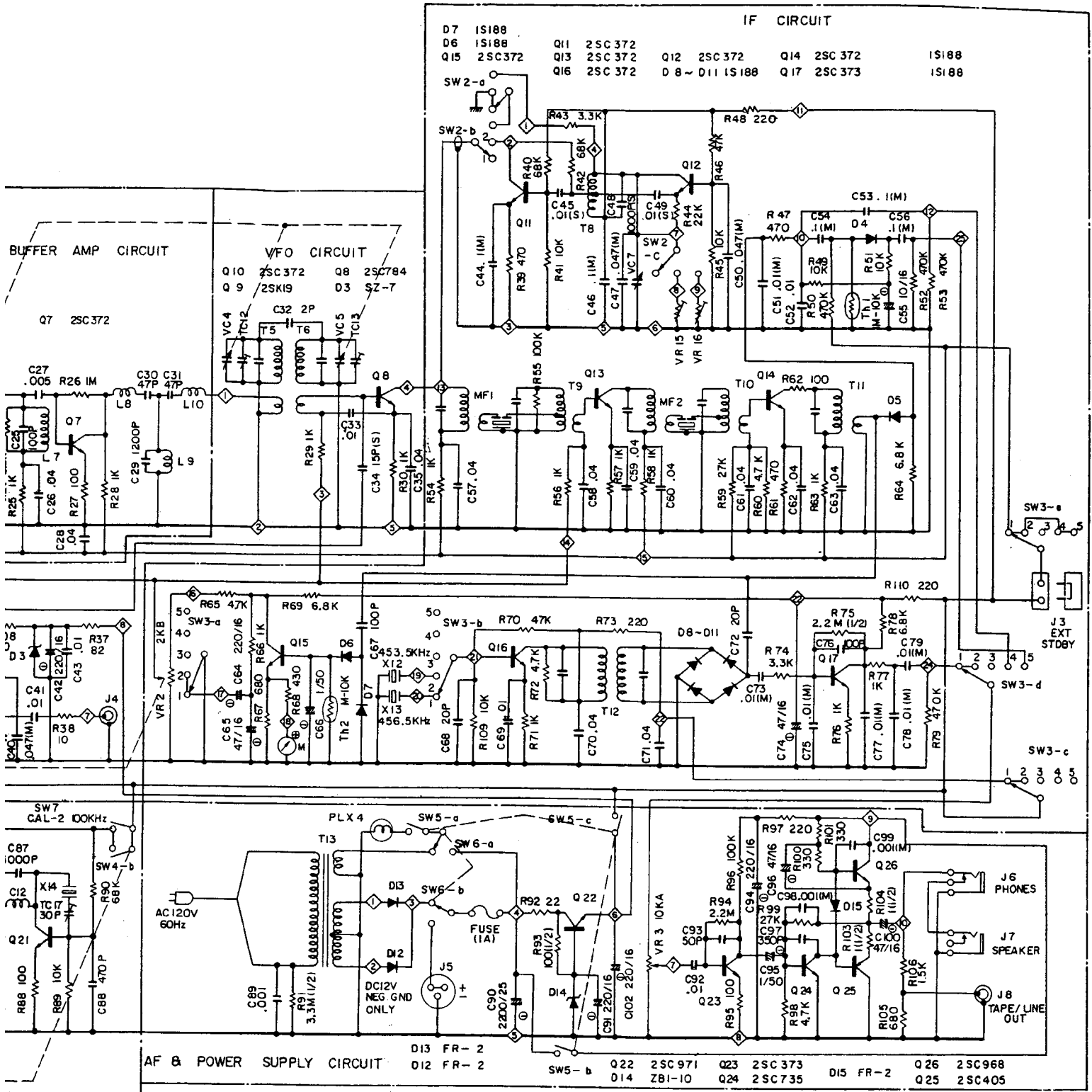
TRANSISTOR AND DIODE COMPLEMENT

Q 1	2SK19	Cascode RE Stage
Q 2	2SC373	AGC Amp.
Q 3	2SK19	Cascode RF Stage
Q 4	2SK19	1st Mixer
Q 5	2SC371	1st Local Osc.
Q 6	2SC371	1st Local Osc. Emitter Follower
Q 7	2SC372	1St IF Band Pass Amp.
Q 8	2SC784	2nd Mixer
Q 9	2SK19	Variable Frequency Osc.
Q10	2SC372	Variable Frequency Osc. Emitter Follower
Q11	2SC372	"Q" Multiplier Inverter
Q12	2SC372	"Q" Multiplier
Q13	2SC372	2nd IF Amp.
Q14	2SC372	2nd IF Amp.
Q15	2SC373	AGC Amp.
Q16	2SC372	BFO
Q17	2SC373	AF Amp.
Q18	2SC373	CAL. Buffer Amp.
Q19	2SC373	25khz Multivibrator
Q20	2SC373	25kHz Multivibrator
Q21	2SC372	100kHz Calibrator
Q22	2SC971	Regulator
Q23	2SC373	AF Amp.
Q24	2SC735	AF Driver Amp.
Q25	2SB405	AF Power Amp.
Q26	2SC968	AF Power Amp.

D 1	1S188	Overload Protector
D 2	1S188	Overload Protector
D 3	SZ7	7V Voltage Regulator
D 4	1S188	ANL
D 5	1S188	AM Detector
D 6	1S188	AGC Detector
D 7	1S188	AGC Detector
D 8	18188	Product Detector
D 9	18188	Product Detector
D10	1S188	Product Detector
D11	1S188	Product Detector
D12	FR-2	Rectifier
D13	FR-2	Rectifier
D14	ZB1-10	10V Voltage Regulator
D15	FR-2	Temperature Compensator
TH 1	M-10K	Temperature Compensator
TH 2	M-10K	Temperature Compensator



REMARKS:
 RESISTANCE VALUES IN OHMS. K=1000 M=1000000
 CAPACITANCE VALUES IN MF. P=MMF



- IF CIRCUIT
- | | | | | | | | | |
|-----|--------|-----|--------|----------|--------|-----|--------|-------|
| D7 | 1S188 | Q11 | 2SC372 | Q12 | 2SC372 | Q14 | 2SC372 | 1S188 |
| D6 | 1S188 | Q13 | 2SC372 | D8 ~ D11 | 1S188 | Q17 | 2SC373 | 1S188 |
| Q15 | 2SC372 | Q16 | 2SC372 | | | | | |

BUFFER AMP CIRCUIT

VFO CIRCUIT

Q7 2SC372

Q10 2SC372 Q8 2SC784
Q9 2SK19 Q3 SZ-7

Q21 2SC372

AF & POWER SUPPLY CIRCUIT

D13 FR-2
D12 FR-2

VALUES IN OHMS: K=1000 M=1000000
E VALUES IN MF. P=MMF

COMPLETE SCHEMATIC DIAGRAM OF RECEIVER