

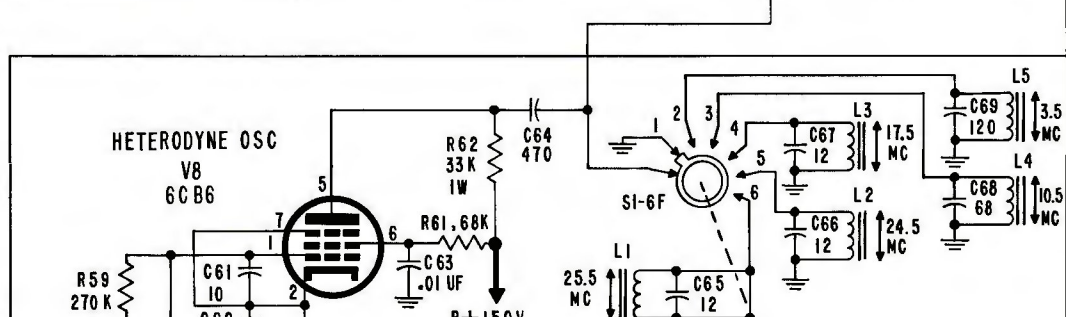
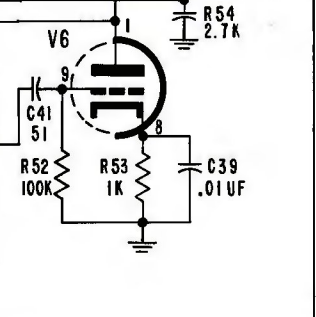
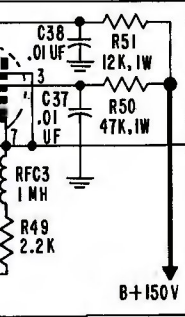
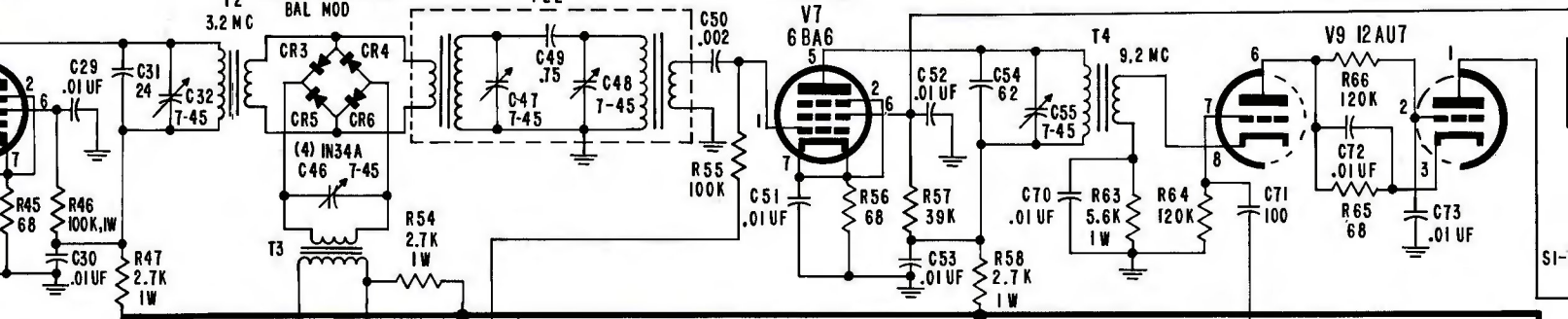
MPL

### SIDEBAND SWITCHING

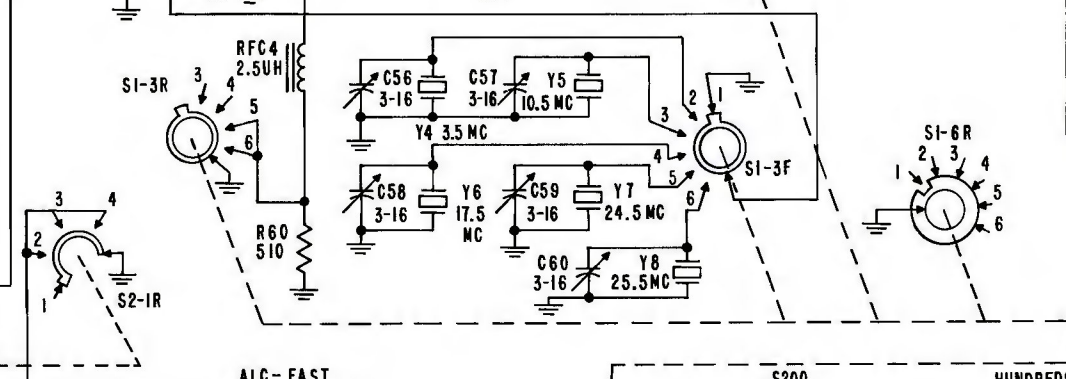
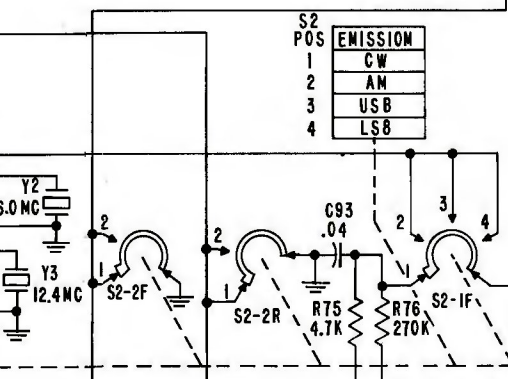
### FL2

### 9.2 MC AMPL

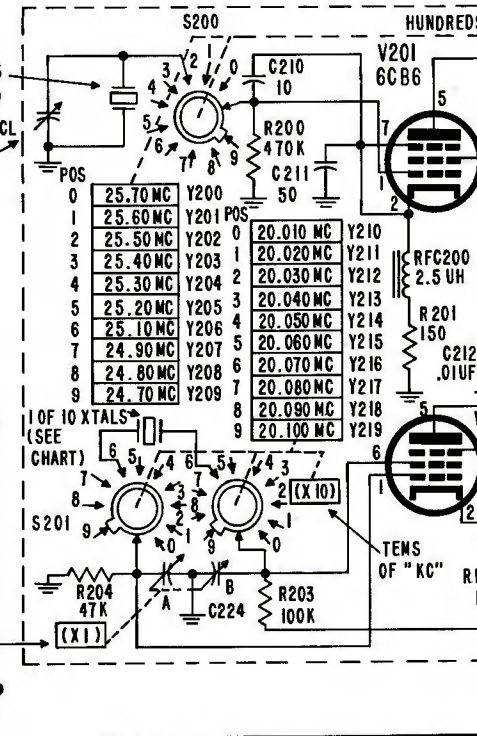
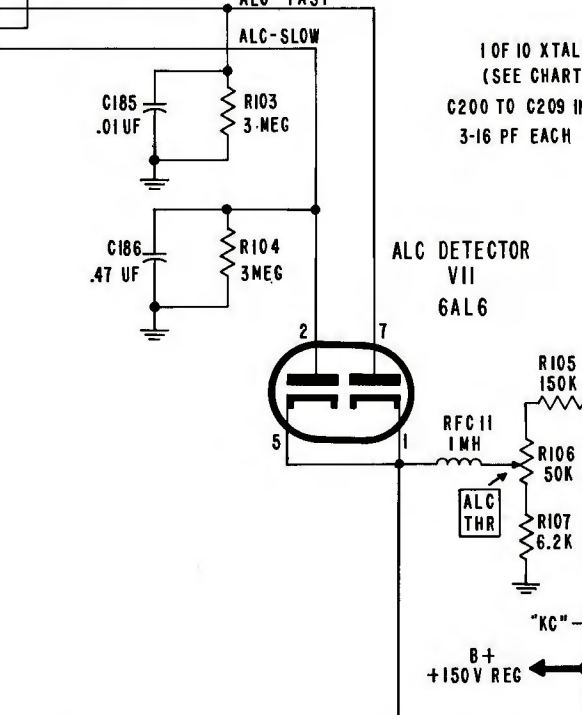
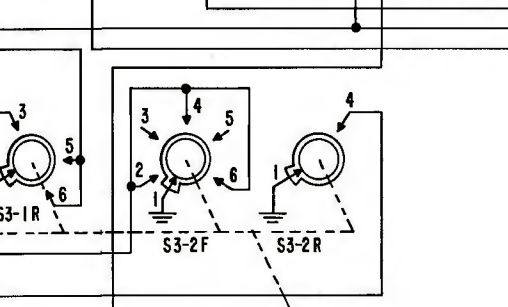
### 1ST MIXER



S2 POS	EMISSION
1	CW
2	AM
3	USB
4	LSB



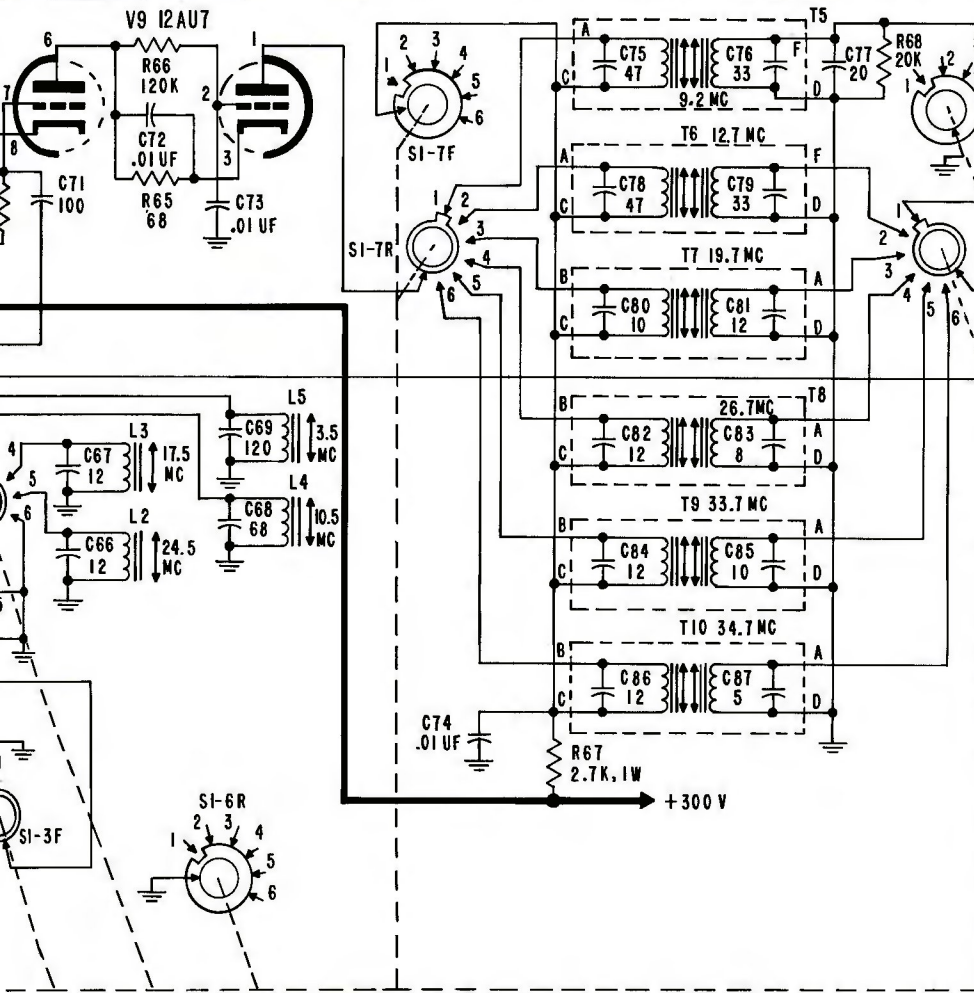
POS	OPERATION
1	OFF
2	STBY
3	MAN
4	CAL
5	VOX
6	P.T.I.



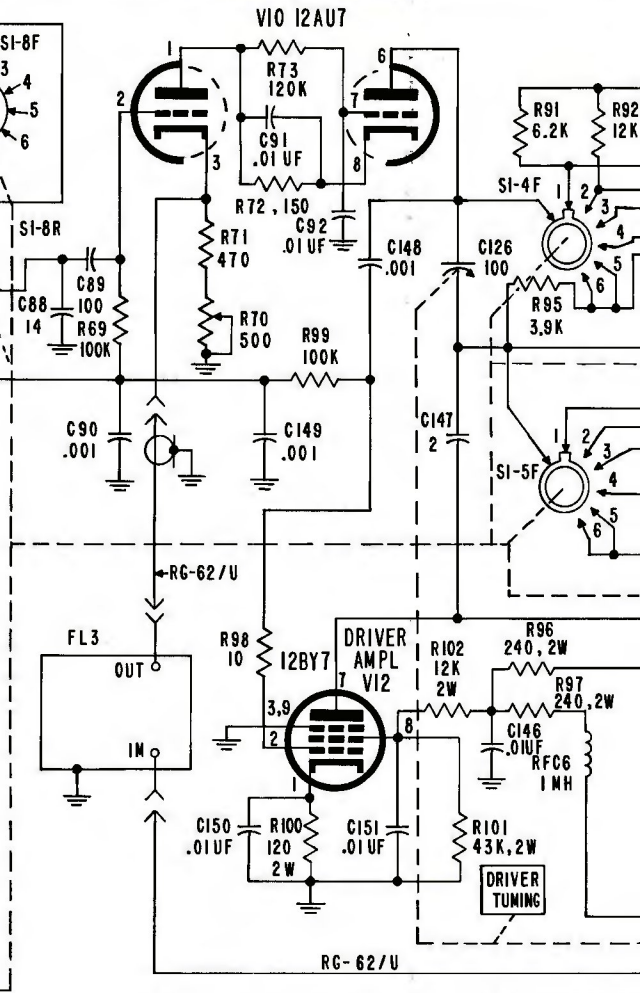
POS	FREQ	POS	FREQ
0	25.70 MC	Y200	20.010 MC
1	25.60 MC	Y201	20.020 MC
2	25.50 MC	Y202	20.030 MC
3	25.40 MC	Y203	20.040 MC
4	25.30 MC	Y204	20.050 MC
5	25.20 MC	Y205	20.060 MC
6	25.10 MC	Y206	20.070 MC
7	24.90 MC	Y207	20.080 MC
8	24.80 MC	Y208	20.090 MC
9	24.70 MC	Y209	20.100 MC



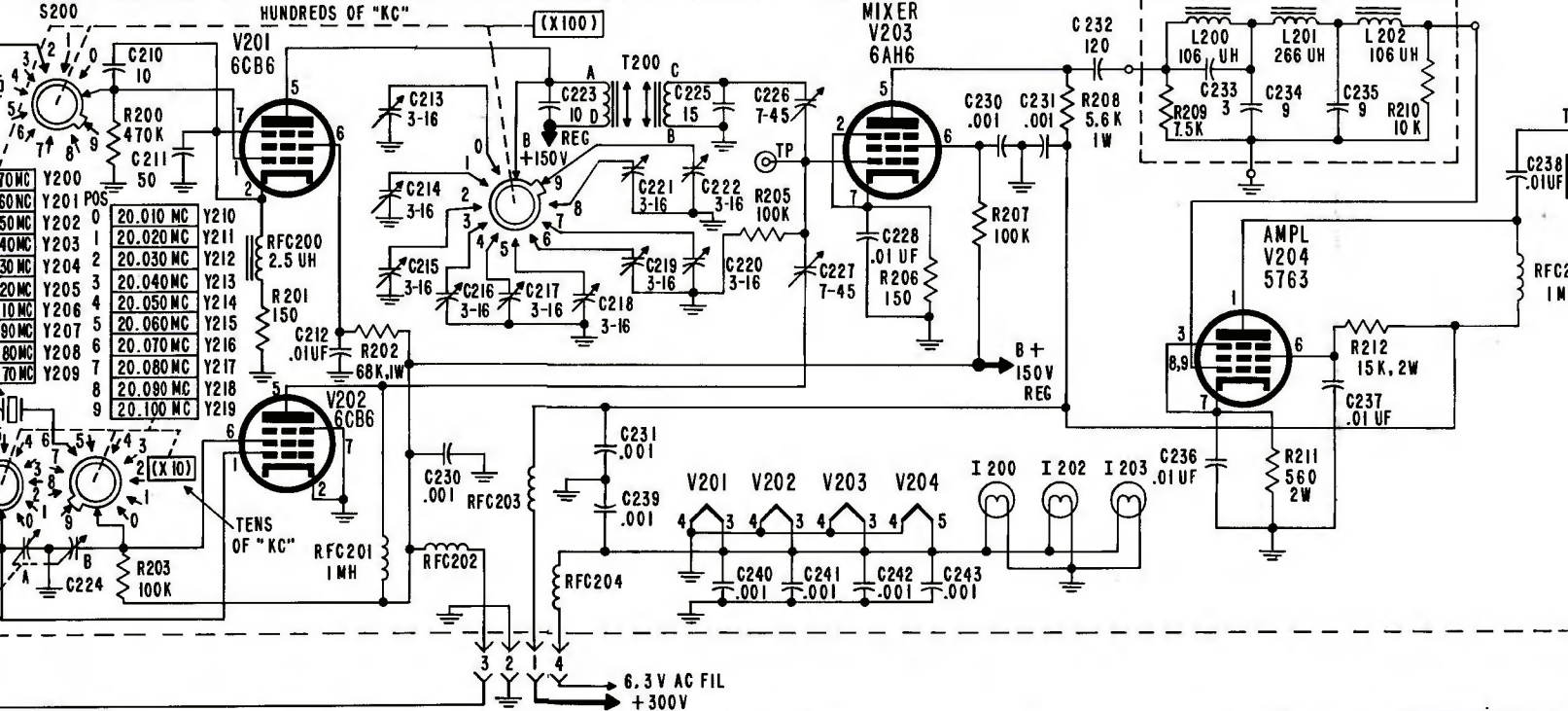
1ST MIXER



2D MIXER

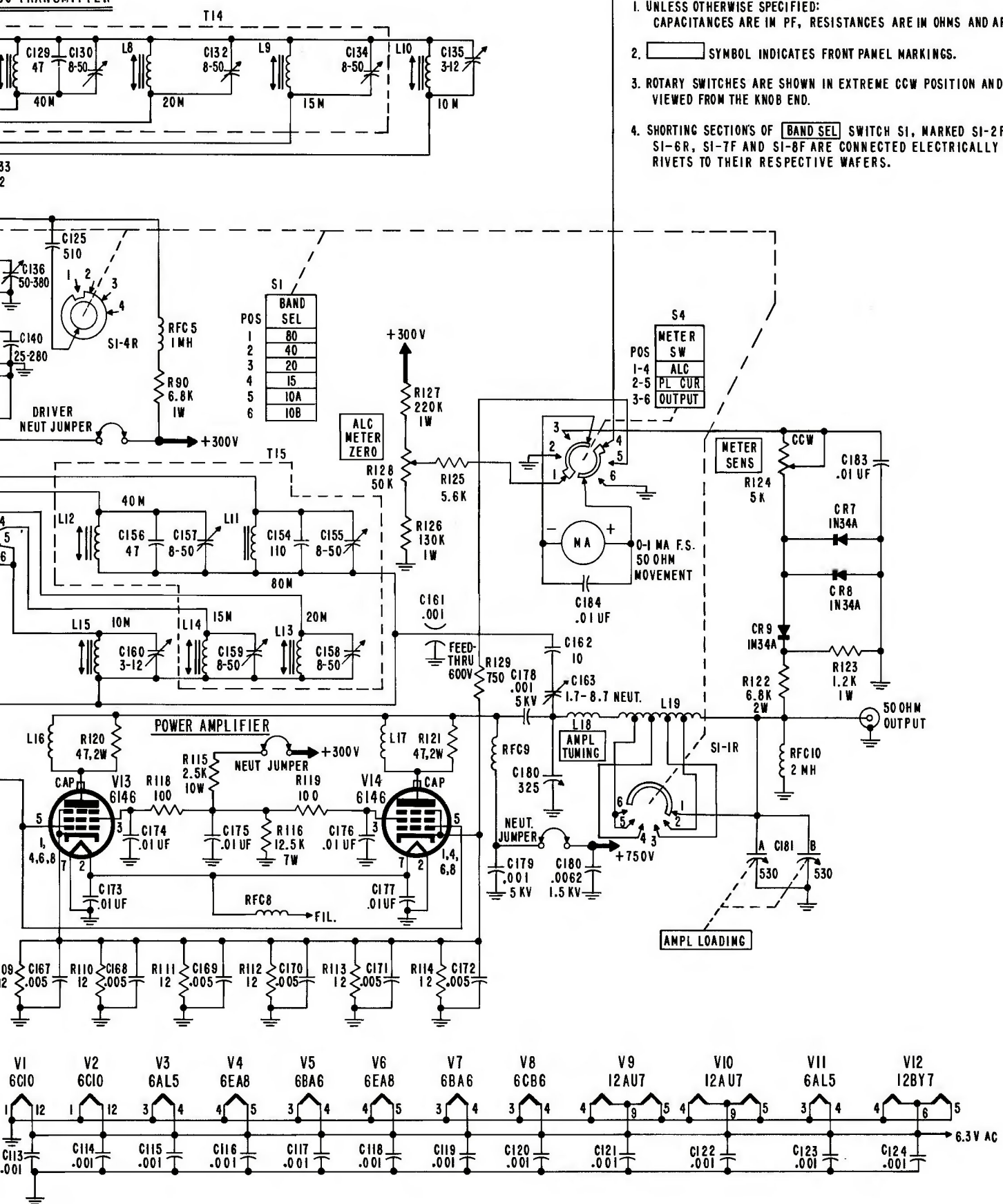


FREQUENCY SYNTHESIZER





100 WATT TRANSMITTER



NOTES

1. UNLESS OTHERWISE SPECIFIED:  
CAPACITANCES ARE IN PF, RESISTANCES ARE IN OHMS AND ARE 1/2 WATT.
2.  SYMBOL INDICATES FRONT PANEL MARKINGS.
3. ROTARY SWITCHES ARE SHOWN IN EXTREME CCW POSITION AND ARE VIEWED FROM THE KNOB END.
4. SHORTING SECTIONS OF BAND SEL SWITCH S1, MARKED SI-2F, SI-4R, SI-6R, SI-7F AND SI-8F ARE CONNECTED ELECTRICALLY THROUGH RIVETS TO THEIR RESPECTIVE WAFERS.

Figure 8. Schematic Diagram