

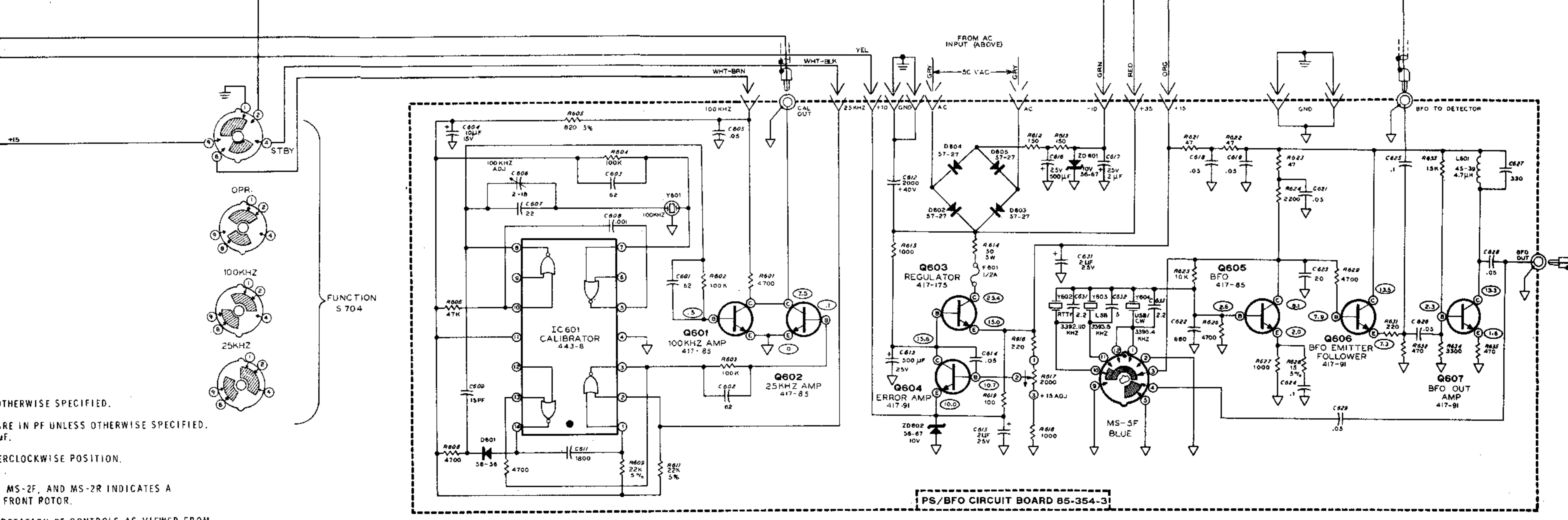
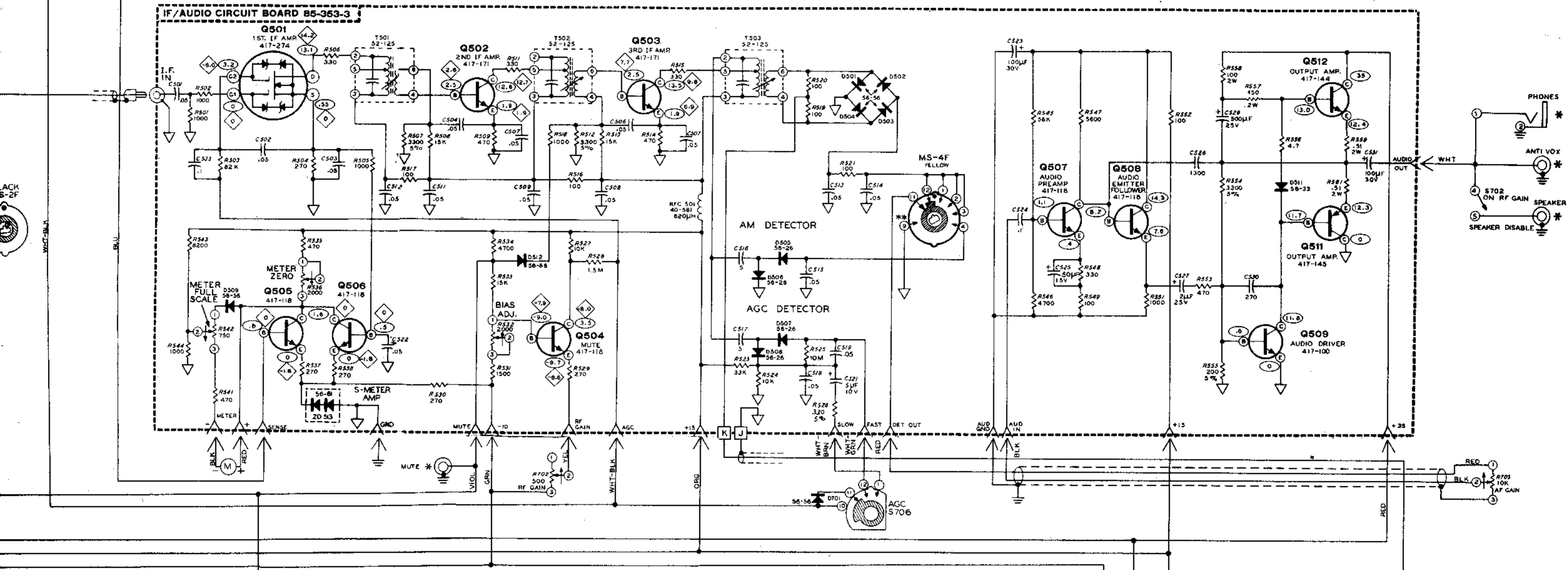
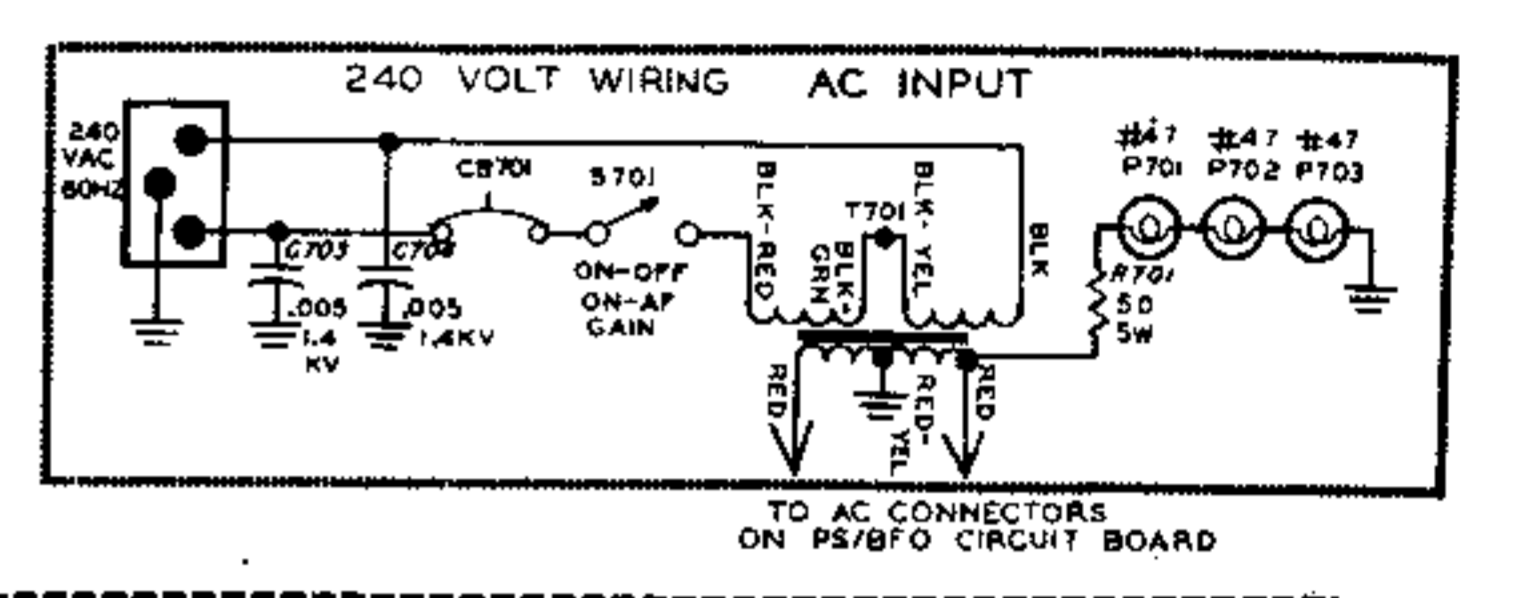
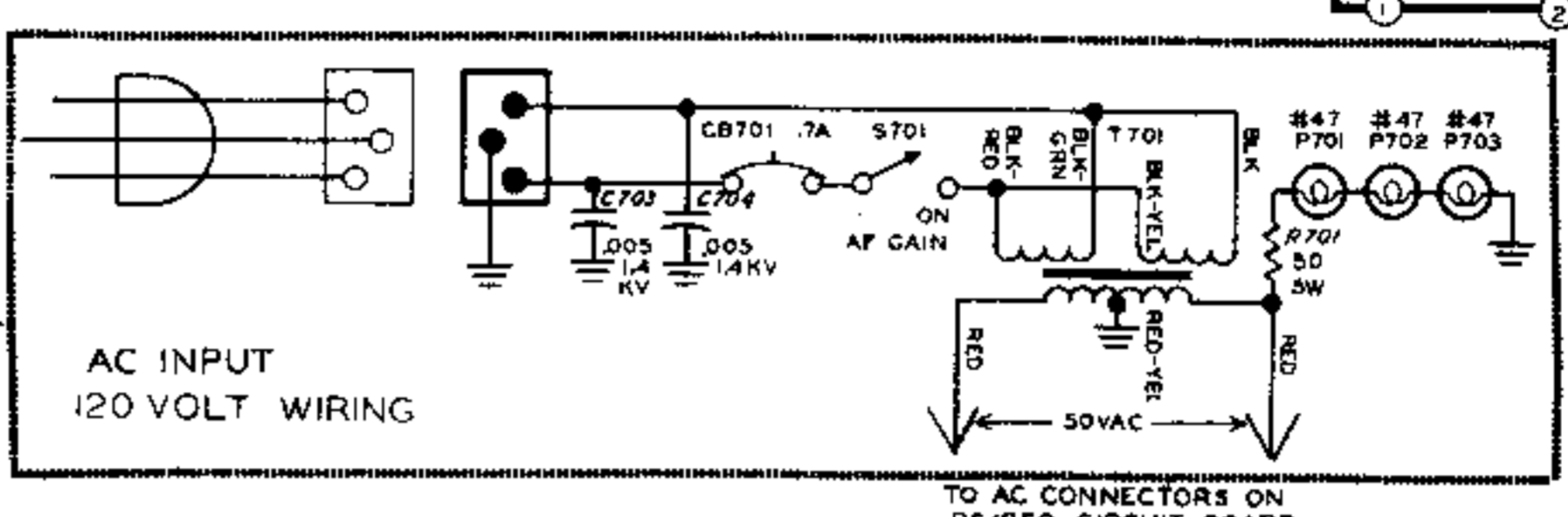
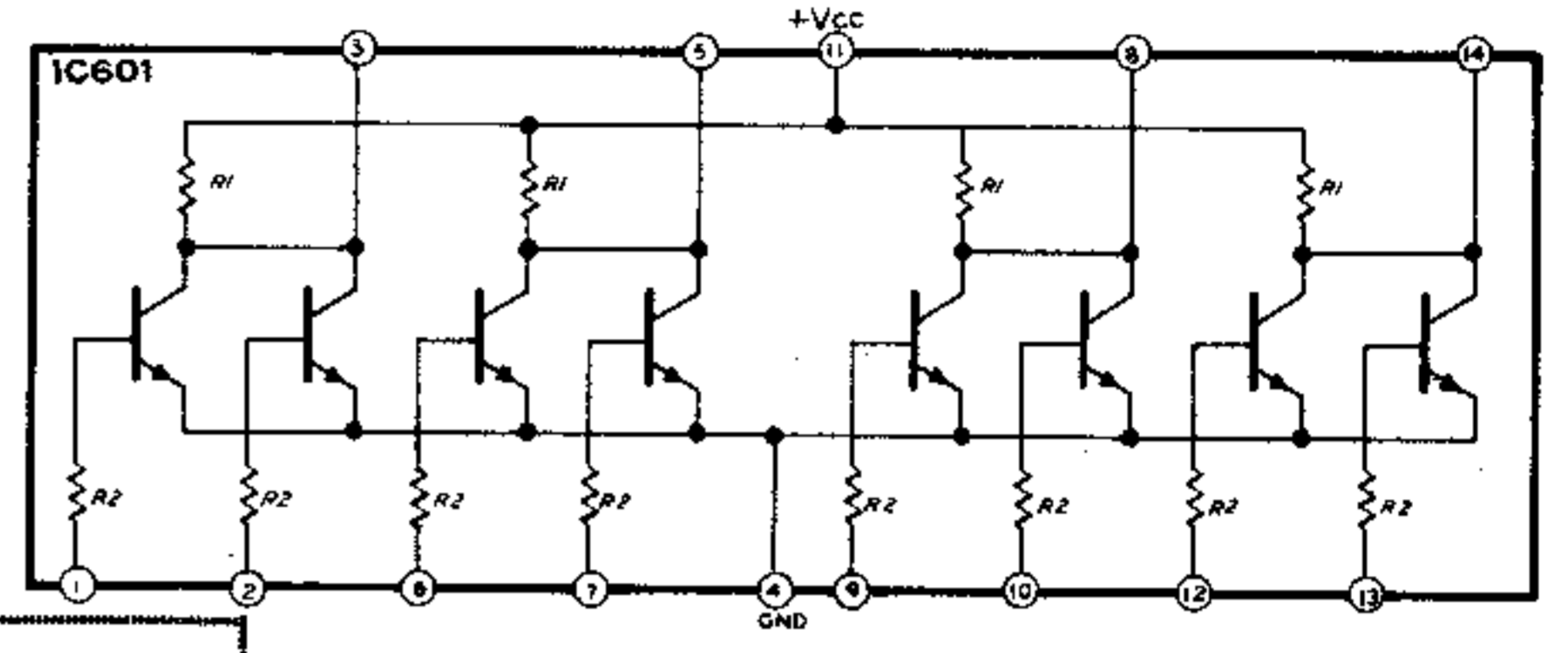
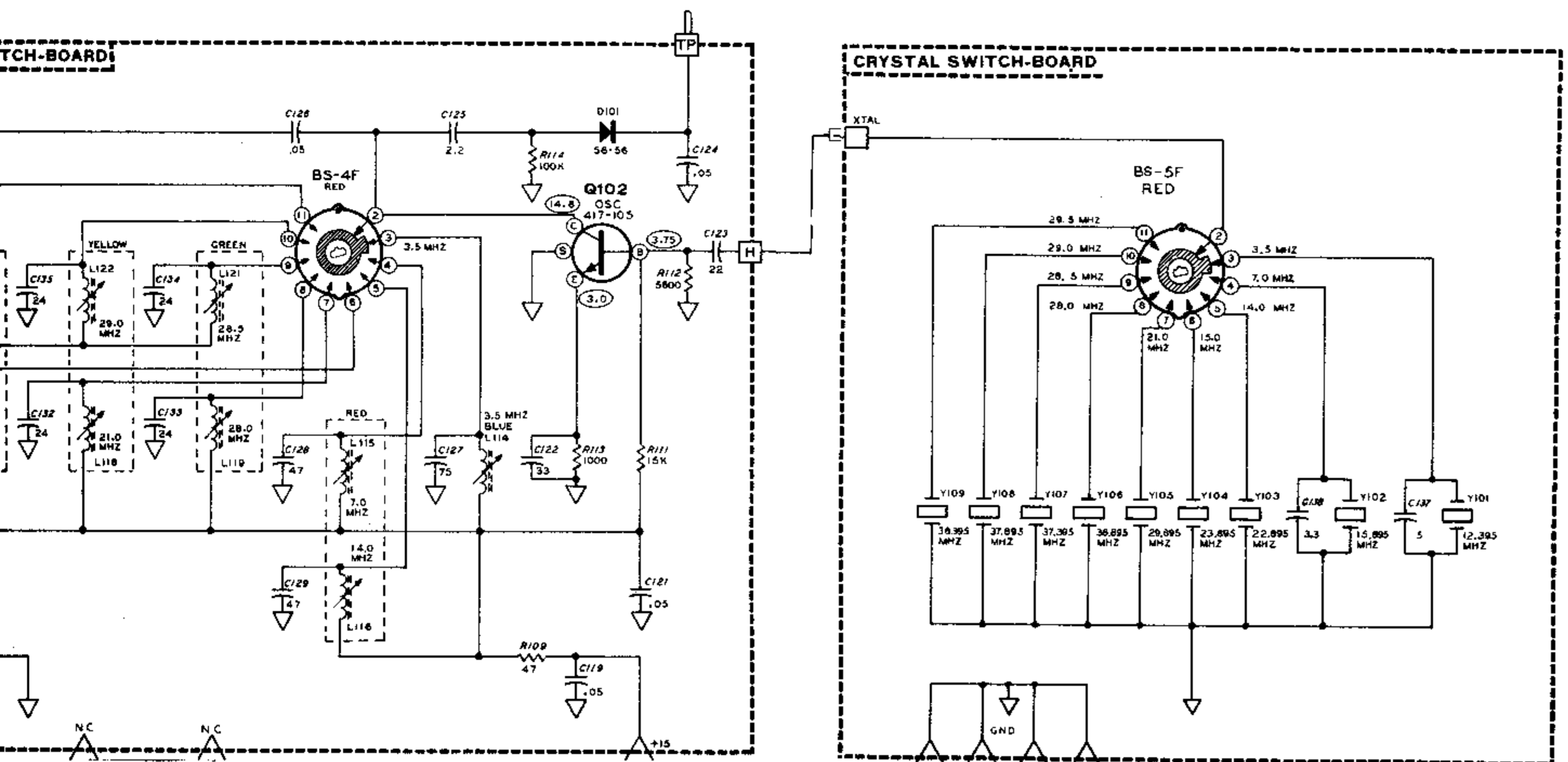
NOTES:

1. ■ INDICATES A PLUG BOARD CONNECTOR PIN.
2. □ INDICATES A SOLDERED WIRE CONNECTION ON CIRCUIT BOARDS AND SWITCH-BOARDS.
3. ▽ INDICATES A CIRCUIT BOARD AND SWITCH-BOARD GROUND.
4. ≡ INDICATES CHASSIS GROUND.
5. * INDICATES A REAR PANEL CONNECTOR.
6. ● INDICATES A TEST POINT.
7. ** INDICATES A CONNECTION FOR PHYSICAL SUPPORT ONLY.
8. ○ INDICATES A VOLTAGE MEASURED WHEN THE FUNCTION SWITCH IS IN THE "OPERATE" POSITION.
9. ◇ INDICATES A VOLTAGE MEASURED WHEN THE FUNCTION SWITCH IS IN THE "STANDBY" POSITION.
10. ALL VOLTAGES WERE MEASURED WITH AN 11 MEGOHM VTVM FROM THE POINT INDICATED TO CHASSIS GROUND. VOLTAGES MAY VARY ±20%.
11. VOLTAGES TAKEN WITH SWITCHES AND CONTROLS IN THE FOLLOWING POSITIONS:

SWITCH OR CONTROL	POSITION
FUNCTION	SEE NOTES 8 AND 9. (100 KHZ FOR MEASUREMENTS IN CALIBRATOR CIRCUIT.
PRESELECTOR	ANY.
BAND	ANY.
MODE	ANY EXCEPT RTTY. (IN "RTTY" POSITION FOR MEASUREMENTS ON RTTY BOARD).
AGC	OFF.
RF GAIN	FULLY CLOCKWISE
AF GAIN	POWER ON-AF GAIN ANY POSITION.
CONVERTER	HF
RF ATTENUATOR	FULLY CLOCKWISE.

12. ALL RESISTORS ARE 1/2 WATT 10% UNLESS OTHERWISE SPECIFIED.
13. ALL CAPACITOR VALUES LARGER THAN 1.0 ARE IN PF UNLESS OTHERWISE SPECIFIED. CAPACITOR VALUES LESS THAN 1.0 ARE IN μF.
14. ALL SWITCHES SHOWN IN THE FULLY COUNTERCLOCKWISE POSITION VIEWED FROM THE KNOB END.
15. THE DOT ON SWITCH ROTORS BS-2F, BS-2R, MS-2F, AND MS-2R IS CONNECTION FROM THE REAR ROTOR TO THE FRONT ROTOR.
16. ◀ THIS SYMBOL INDICATES A CLOCKWISE ROTATION OF CONTROL THE KNOB END OF THE SHAFT OR ACCESSIBLE SIDE.

SCHEMATIC OF THE HEATHKIT® SOLID-STATE SSB RECEIVER MODEL SB-303



UNLESS OTHERWISE SPECIFIED,
RESISTOR VALUES ARE IN OHMS UNLESS OTHERWISE SPECIFIED.
CAPACITOR VALUES ARE IN PF UNLESS OTHERWISE SPECIFIED.
RESISTOR VALUES ARE IN OHMS UNLESS OTHERWISE SPECIFIED.
CAPACITOR VALUES ARE IN PF UNLESS OTHERWISE SPECIFIED.
RESISTOR VALUES ARE IN OHMS UNLESS OTHERWISE SPECIFIED.
CAPACITOR VALUES ARE IN PF UNLESS OTHERWISE SPECIFIED.

R1=640 OHMS
R2=450 OHMS

PHONES
ANTI VOX
SPEAKER
SPEAKER DISABLE

PS/BFO CIRCUIT BOARD 85-354-3