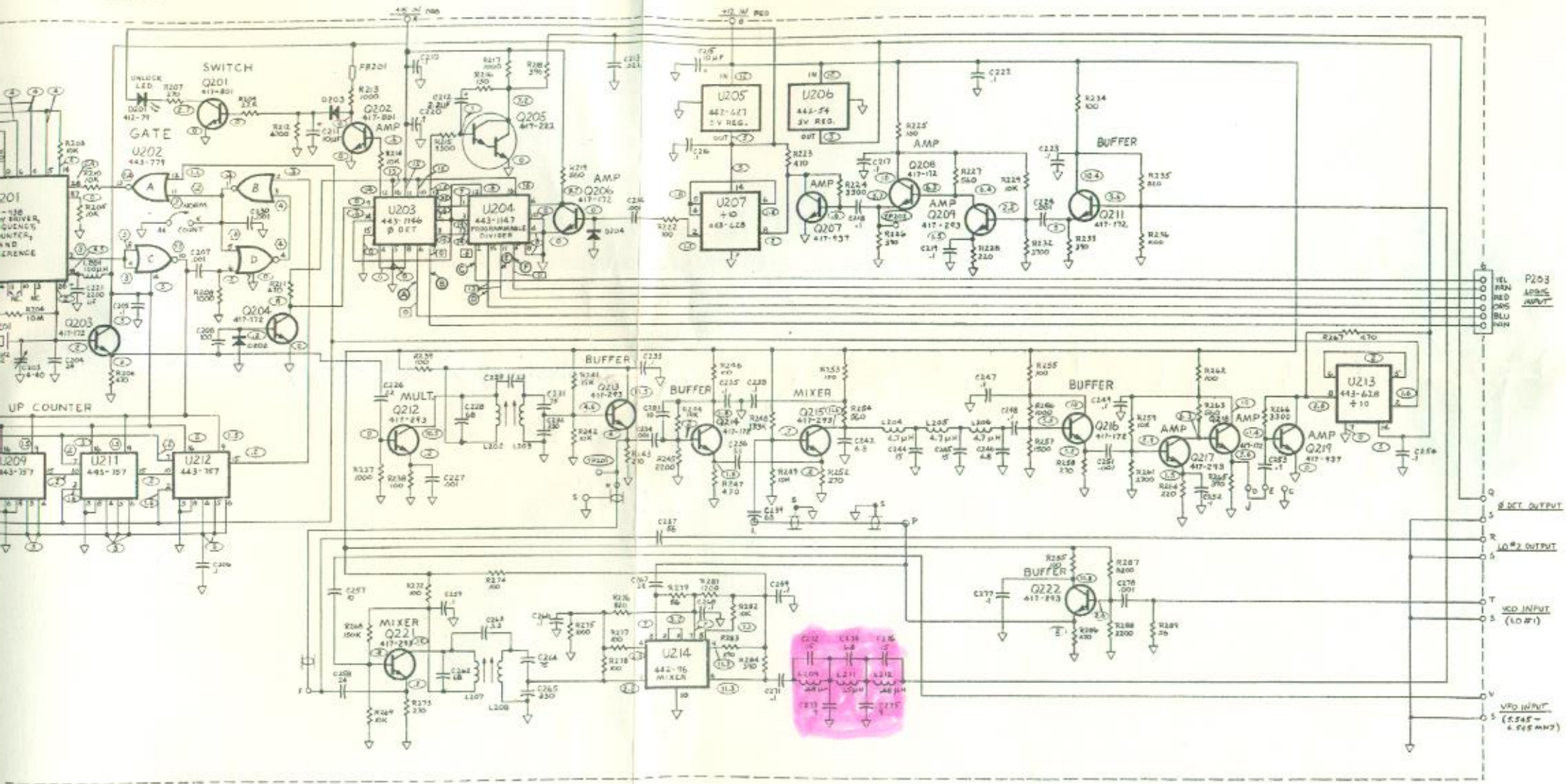
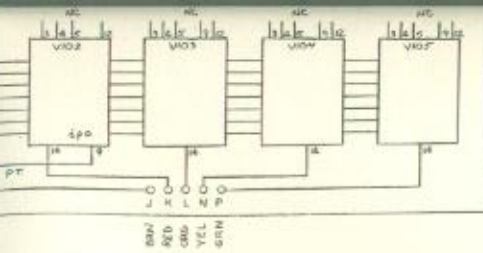
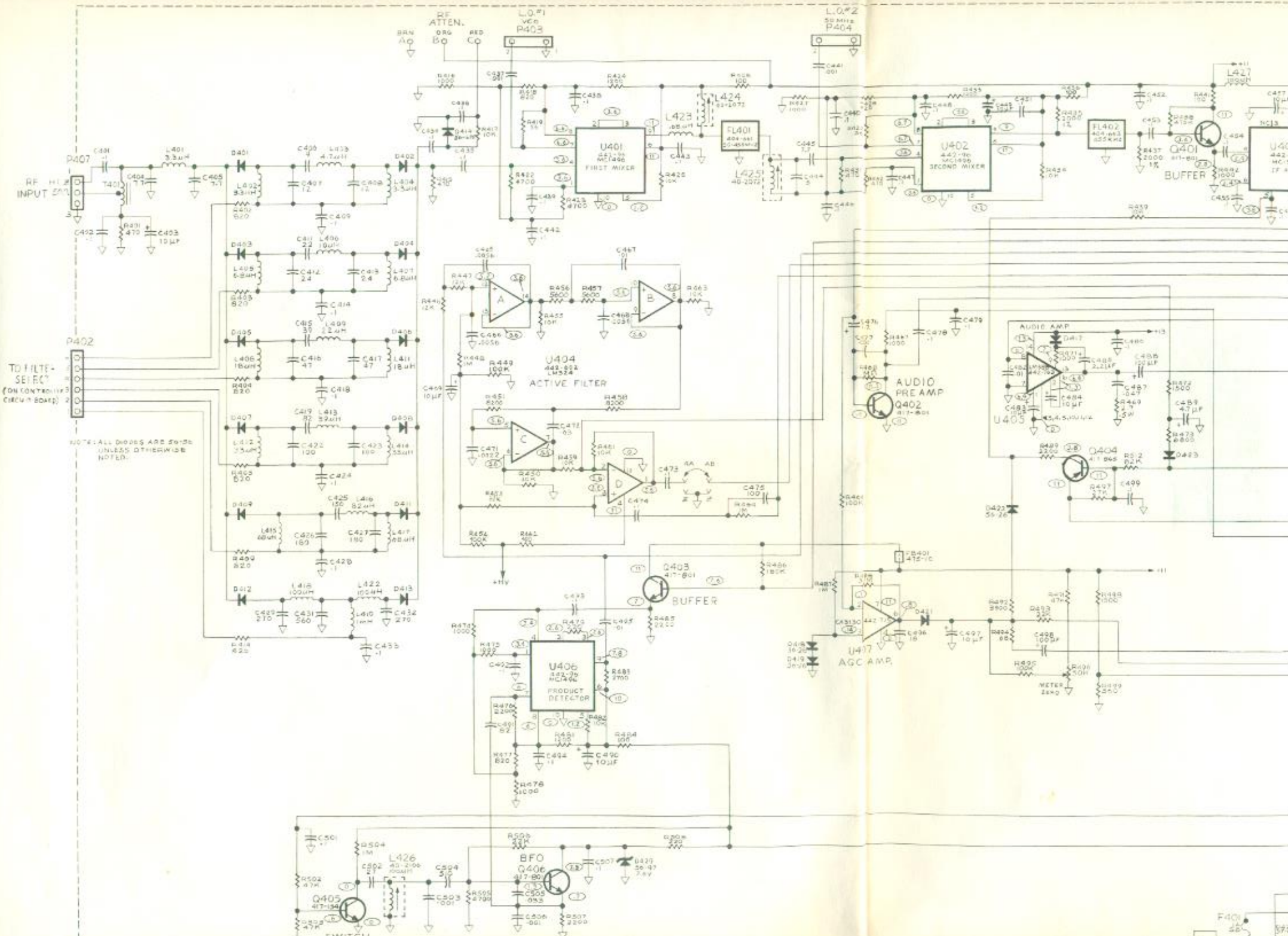


Synthesizer Circuit Board



Synthesizer Circuit Board



TO FILTER
SELECT
(ON CONTROLLER
BOARD) 2

NOTE: ALL DIODES ARE 50-50
UNLESS OTHERWISE
NOTED.

SWITCH

BFO

AUDIO
PRE AMP

AUDIO AMP

AGC AMP

ACTIVE FILTER

FIRST MIXER

SECOND MIXER

BUFFER

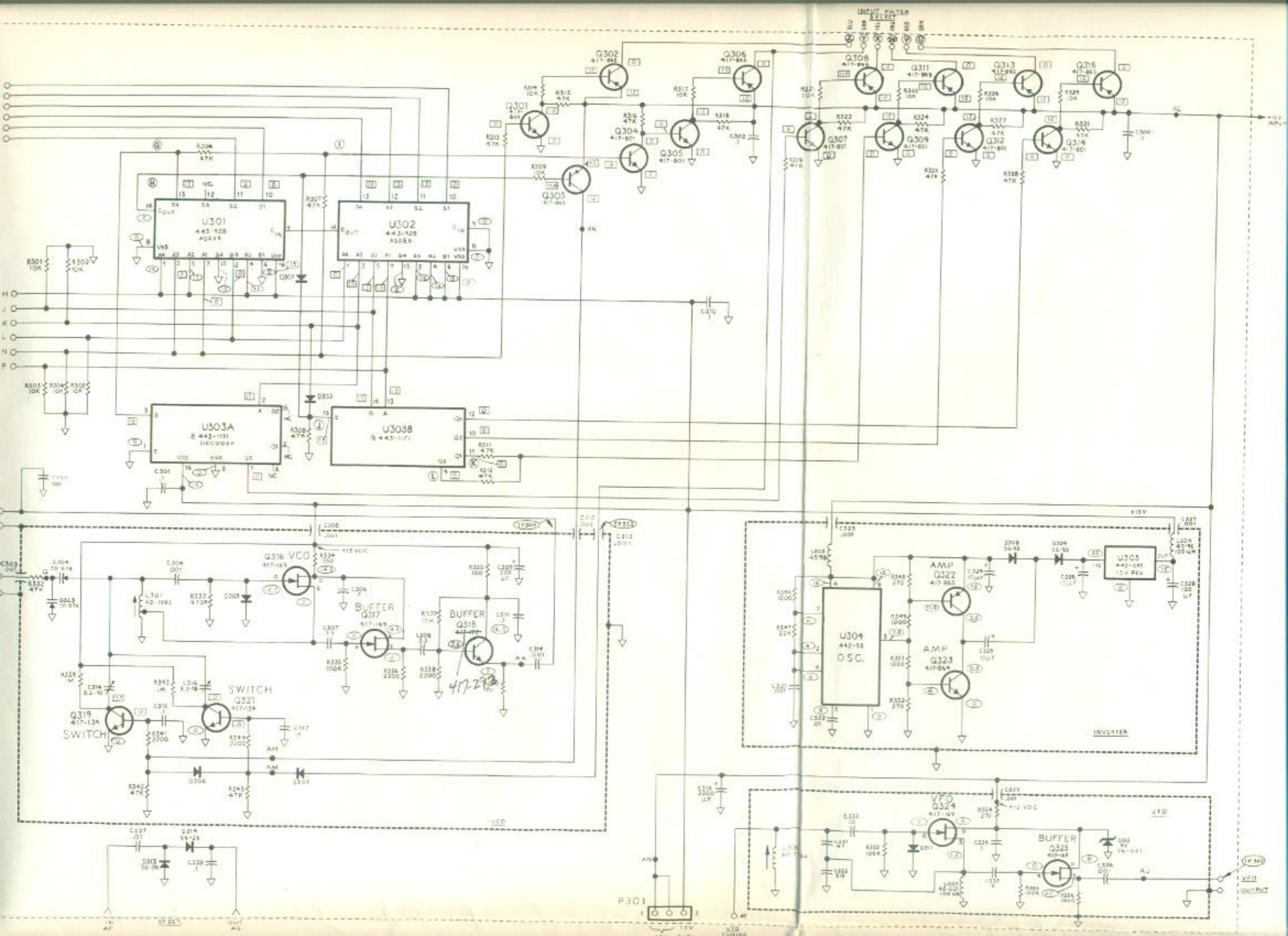
IF AMP

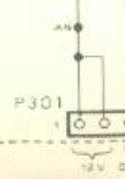
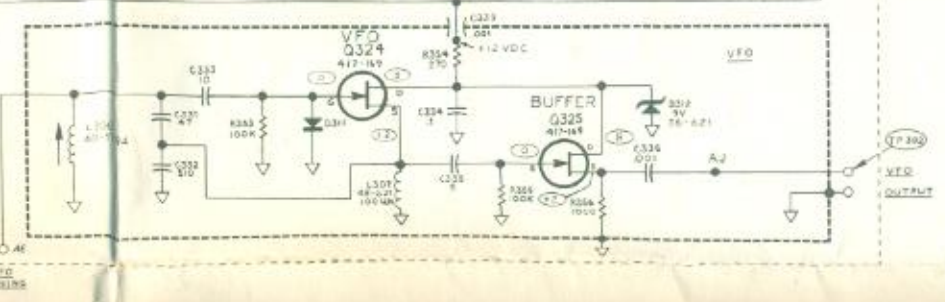
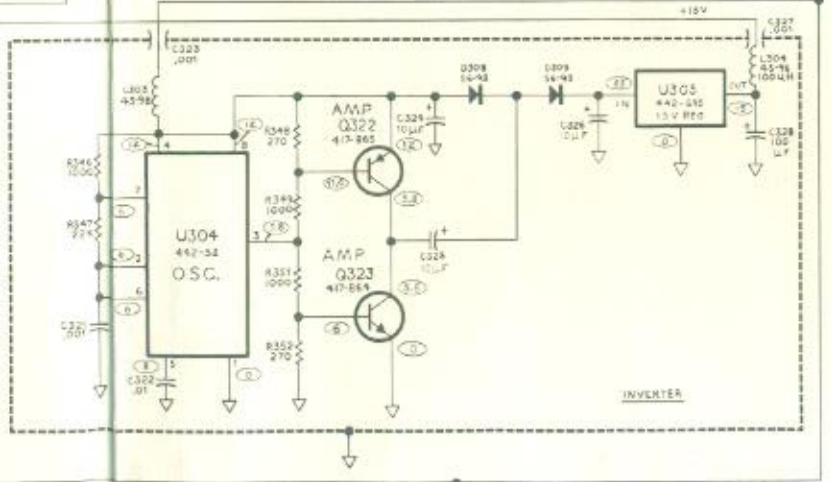
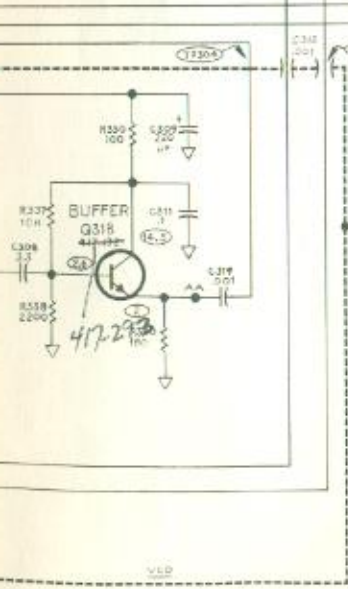
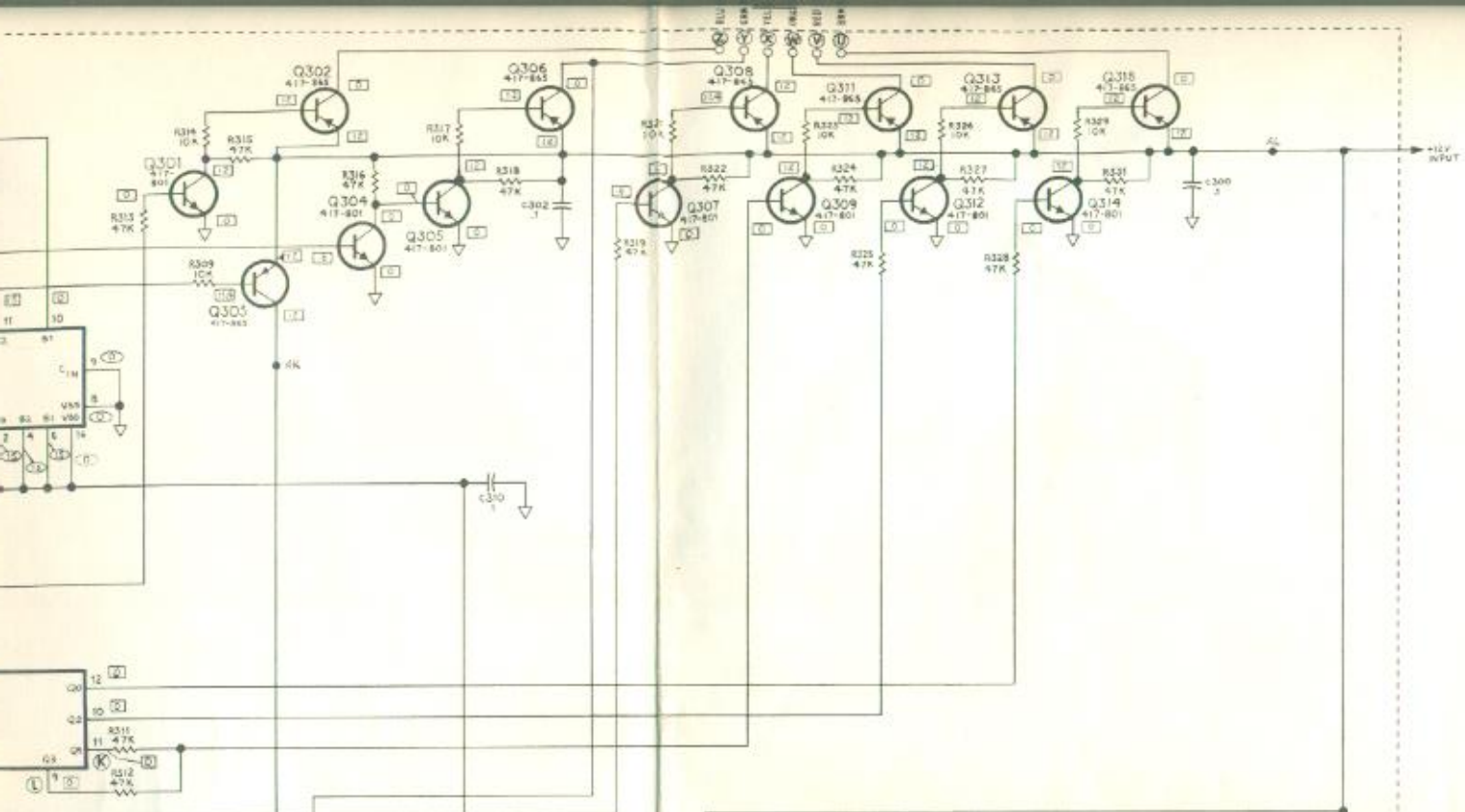
RF
ATTEN.

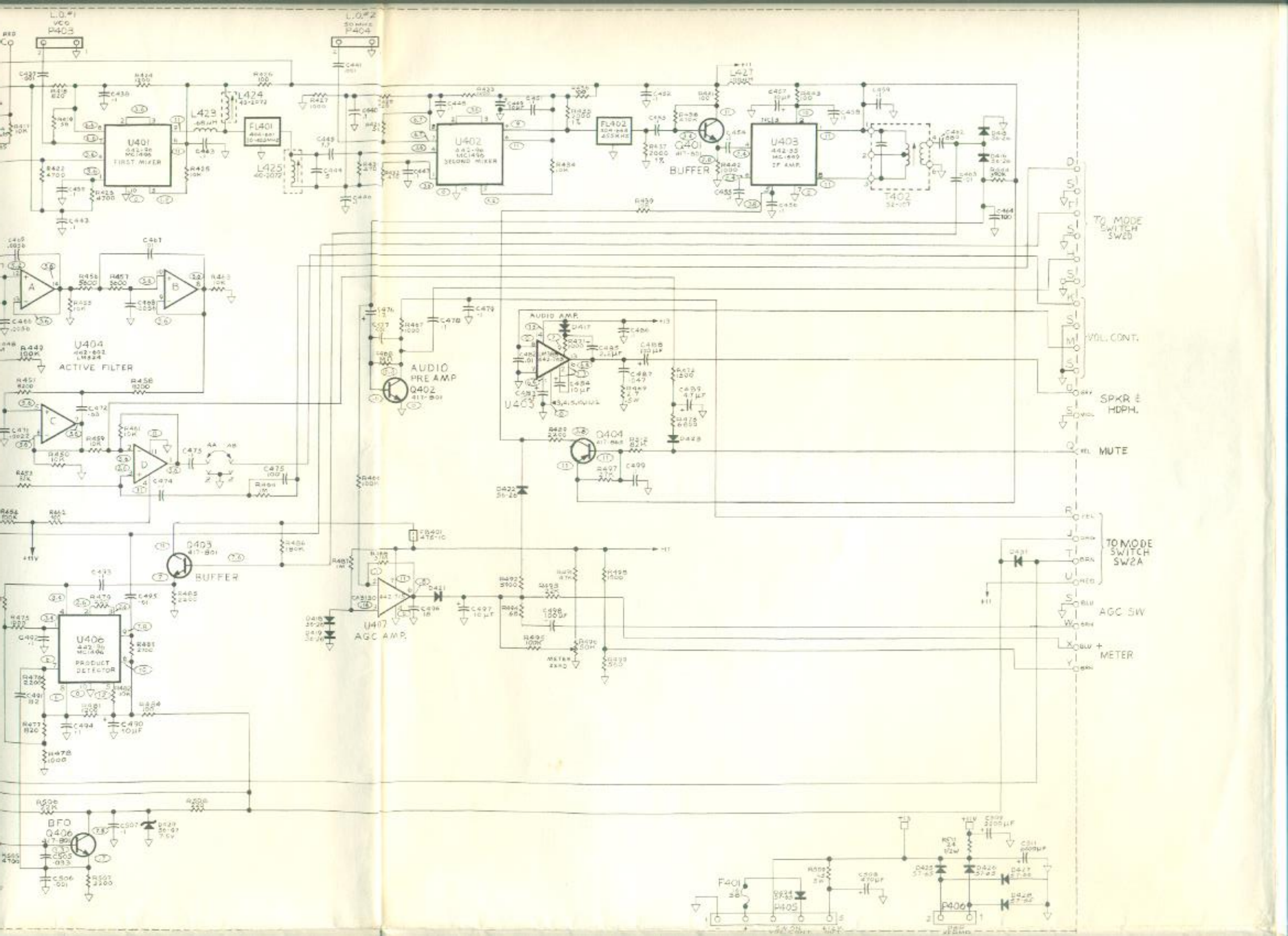
L.O.#2
50 MHz
P404

L.O.#1
VCO
P403

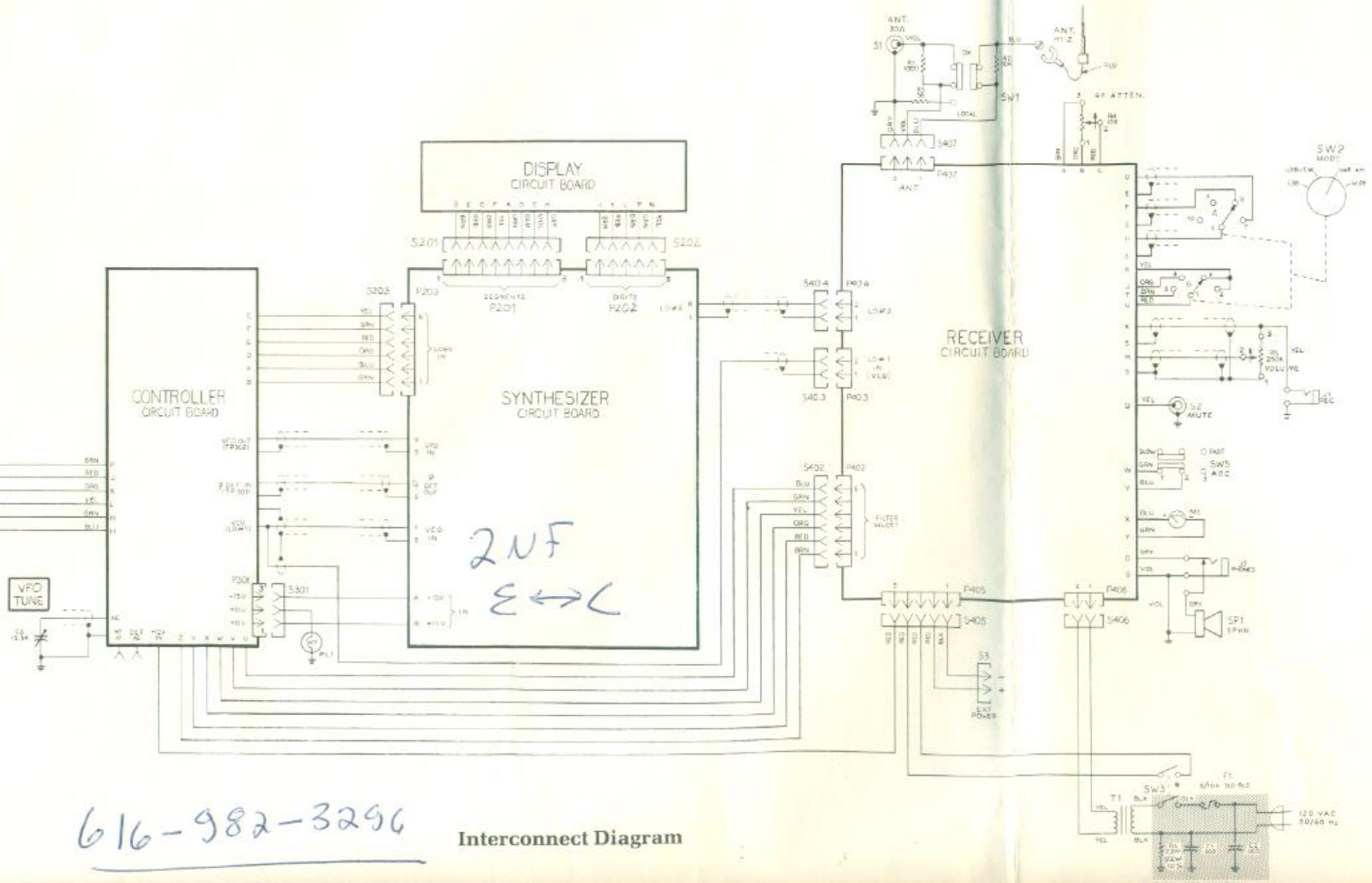
F401
P405







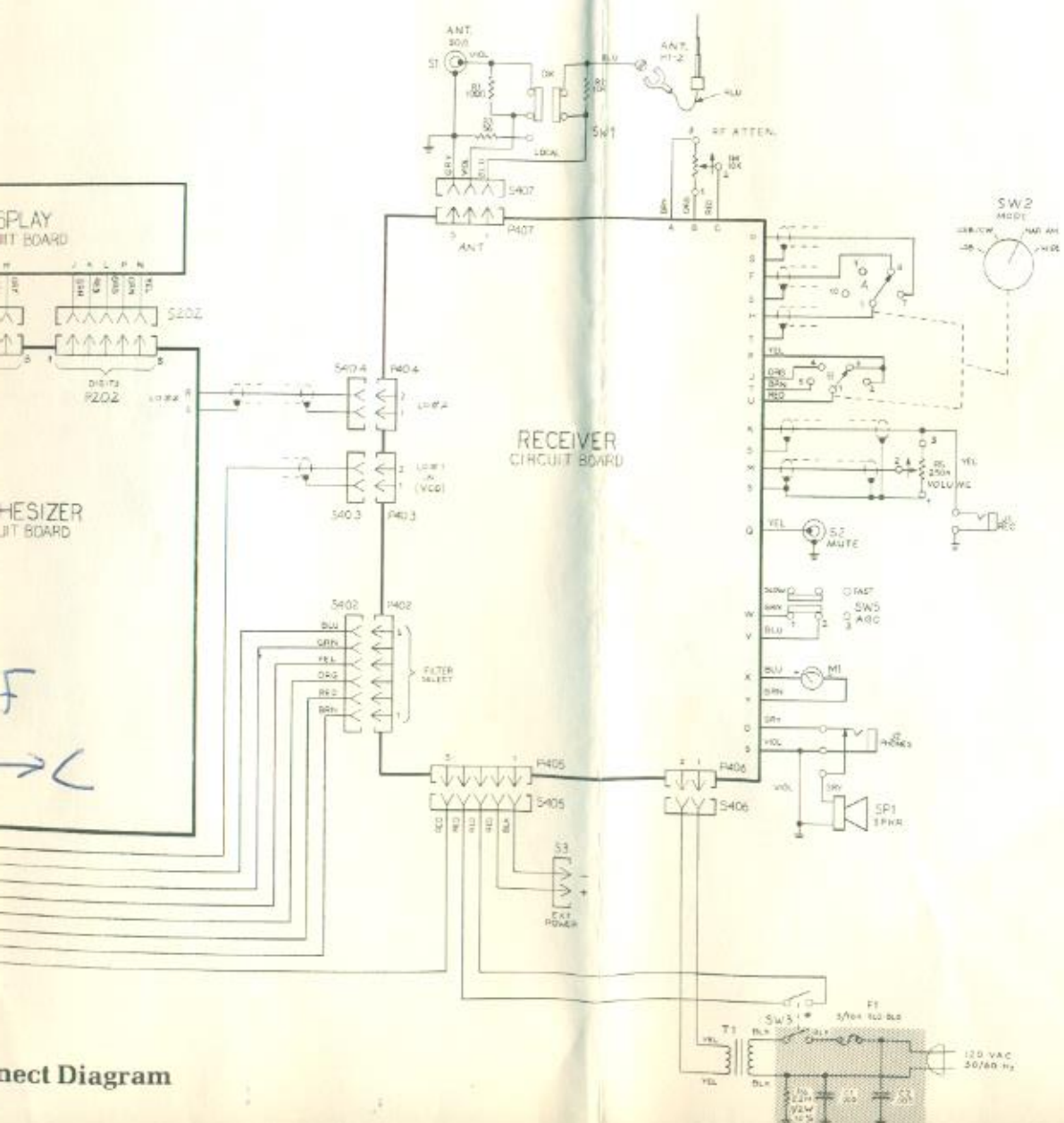
Controller Circuit Board



616-982-3296

Interconnect Diagram

Controller Circuit Board



SCHEMATIC OF THE HEATHKIT® GENERAL COVERAGE RECEIVER MODEL SW-780

NOTES:

1. COMPONENT NUMBERS ARE IN THE FOLLOWING GROUPS:
 1- 99 PARTS MOUNTED ON THE CHASSIS,
 101-199 PARTS MOUNTED ON THE DISPLAY AND SWITCH CIRCUIT BOARDS,
 201-299 PARTS MOUNTED ON THE SYNTHESIZER CIRCUIT BOARD,
 301-399 PARTS MOUNTED ON THE CONTROLLER CIRCUIT BOARD,
 401-599 PARTS MOUNTED ON THE RECEIVER CIRCUIT BOARD.
2. ALL RESISTORS ARE RATED AT 1/4-WATT AND HAVE 5% TOLERANCE UNLESS OTHERWISE NOTED. RESISTOR VALUES ARE IN (OHMS-K=1000; M=1,000,000).
3. CAPACITOR VALUES LESS THAN 1 ARE IN μ F (MICROFARADS). ALL OTHER CAPACITOR VALUES ARE IN pF (PICOFARADS) UNLESS OTHERWISE NOTED.
4. ○ THIS SYMBOL INDICATES A POSITIVE DC VOLTAGE MEASURED WITH A HIGH IMPEDANCE VOLTMETER FROM THE POINT INDICATED TO CHASSIS GROUND.
5. □ THIS SYMBOL INDICATES A POSITIVE DC VOLTAGE THAT VARIES DEPENDING UPON WHICH BAND IS SELECTED.
6. ⬡ THIS SYMBOL INDICATES A PULSATING VOLTAGE.
7. ▽ THIS SYMBOL INDICATES CIRCUIT BOARD GROUND.
8. ≡ THIS SYMBOL INDICATES CHASSIS GROUND.
9. ○ THIS SYMBOL WITH A LETTER INDICATES A TEST POINT.
10. ⌵ THIS SYMBOL INDICATES A PLUG AND SOCKET.
11. REFER TO THE "CIRCUIT BOARD X-RAY VIEWS" FOR THE PHYSICAL LOCATION OF PARTS.
12. ALL DIODES ARE PART NUMBER 56-56 UNLESS OTHERWISE NOTED.
13. VOLTAGES ON U403 AND U407 WERE TAKEN WITH NO SIGNAL. VOLTAGES ON Q402 WERE TAKEN WITH MODE SWITCH AT AM-NAR AND VOLTAGES ON Q405 WITH MODE SWITCH AT LSB.
14. THE PARTS WITHIN THE SHADED AREA ARE CRITICAL TO PRODUCT SAFETY. REPLACE ONLY WITH THE PROPER HEATH PART OR THE EXACT EQUIVALENT.

Connect Diagram