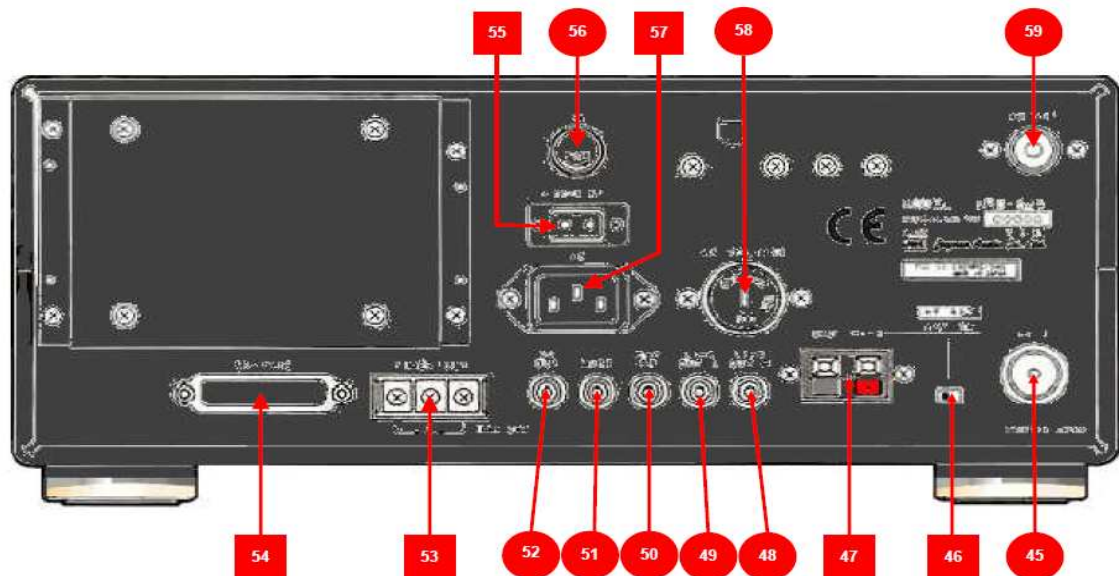


NRD-545



1	TONE Control	12	ECS Button	23	AT (Attenuator) Button	34	FREQ Button
2	AF GAIN Control	13	AGC Button	24	DIMMER Button	35	LCD Display
3	AGC T Button	14	NOTCH Button	25	CLOCK Control	36	>UP, <DOWN Button
4	BWC (BandWidth Control) Button	15	RF Gain Control	26	FM/WFM Button	37	CH (Channel) Button
5	CH SEL (Channel Select) Button	16	NOTCH Button	27	NR/BC (Noise Reduction/Beat Canceller) Button	38	Numerical Keypad
6	STEP Button	17	SQ LEVEL (Squelch Level) Control	28	AM/AS Button	39	FUNC (Function) Button
7	LOCK Button	18	NB LEVEL (Noise Blanker) Control	29	USB/LSB Button	40	MHz Button
8	SCAN Button	19	RECORD Jack	30	CW/RTTY Button	41	ENT/kHz Button
9	MAIN TUNING dial / VARIABLE TORQUE Control	20	PHONES (Headphones) Jack	31	NARROW Button	42	CLR (Clear) Button
10	SWEEP Button	21	POWER Switch	32	INTER Button	43	PBS (Pass Band Shift) Control
11	RUN Button	22	NB (Noise Blanker) Button	33	WIDE Button	44	FINE Control



45	ANT LO-Z (Low-impedance) connector	49	LINE OUT L Jack	53	TIMER OUT Terminal	57	AC Power connector
46	ANT SW (Antenna switch)	50	EXT SP (Speaker) Jack	54	RS-232C Connector	58	Voltage Selector
47	ANT Hi-Z (High-impedance) terminal	51	MUTE Jack	55	DC Power Connector	59	WB ANT (Wideband antenna) Connector
48	LINE OUT R Jack	52	DC OUT (DC output) Jack	56	FUZE Holder		