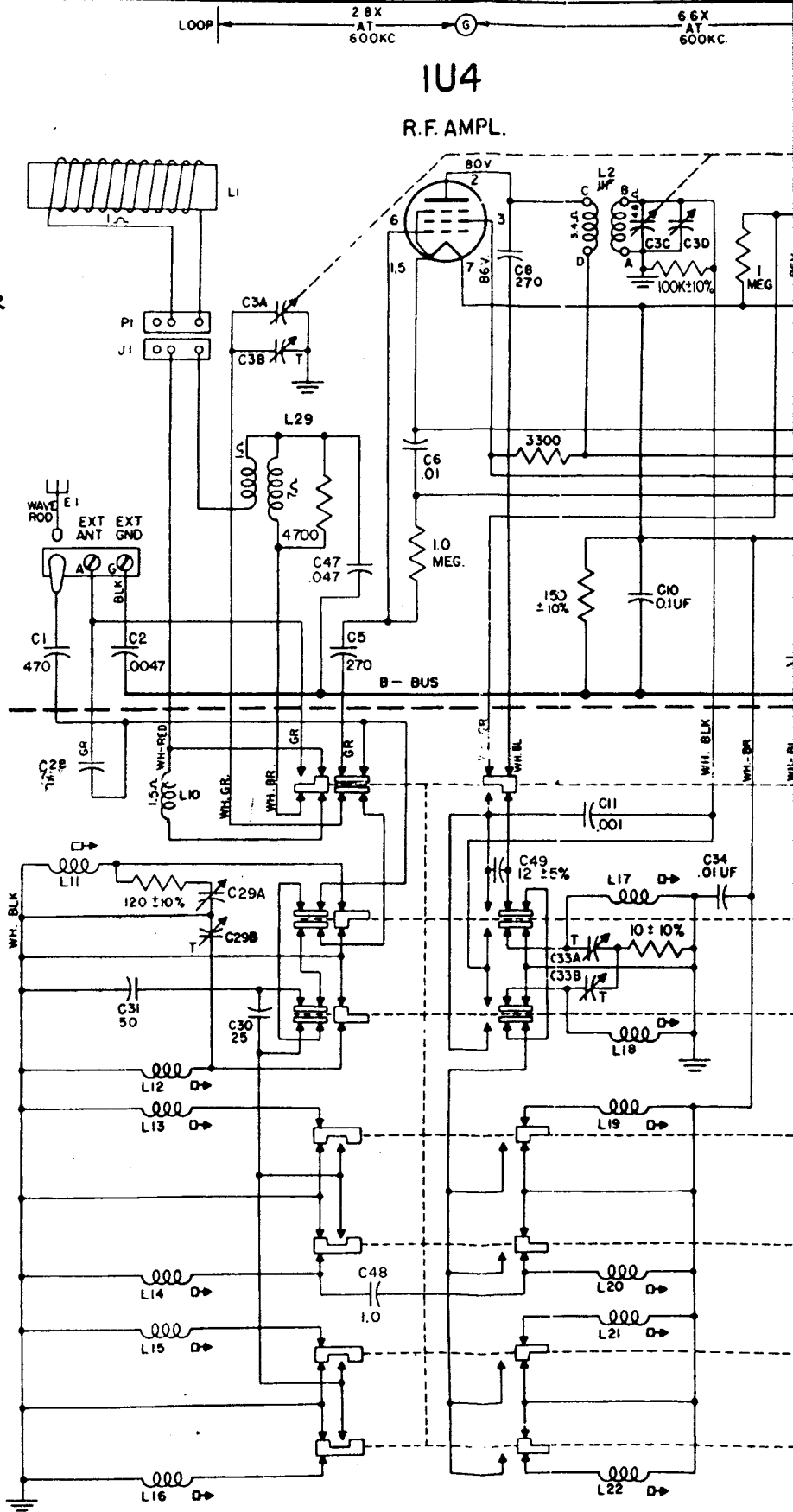
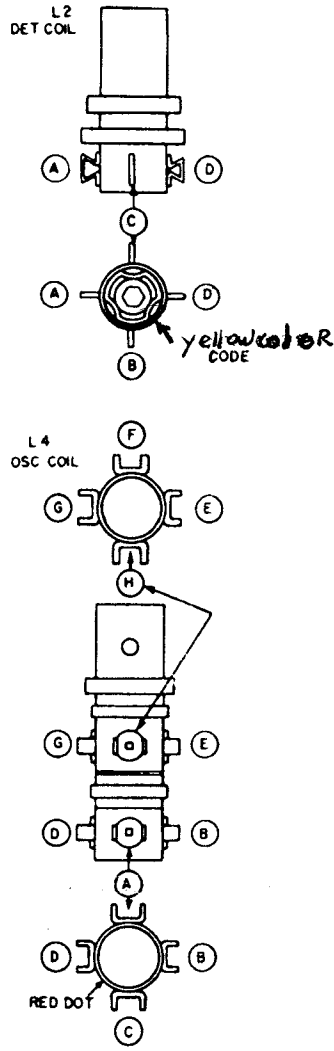
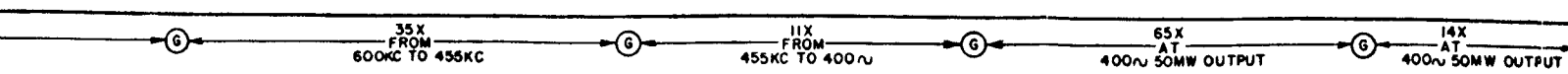


ZENITH RADIO CORPORATION

MODELS A600 AND A600L CHASSIS 6A40 AND 6A41



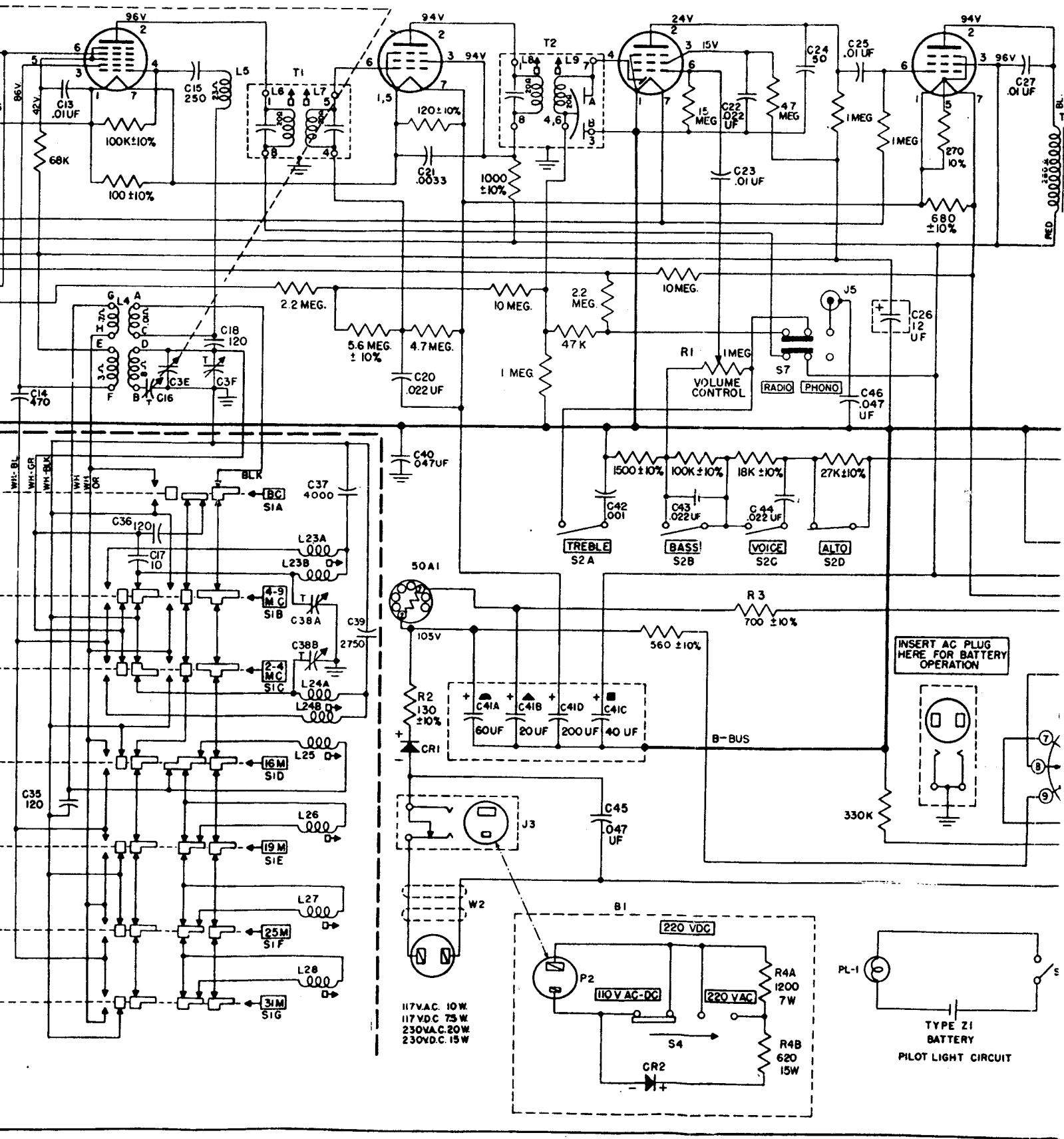


1L6 CONVERTER

1U4 I. F. AMPL.

1U5 DET. AMPL.

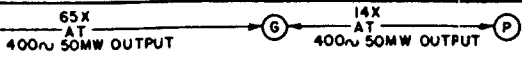
3V4 AUDIO OUTPUT



117VAC. 10W
 117VDC 75W
 230VAC. 20W
 230VDC. 15W

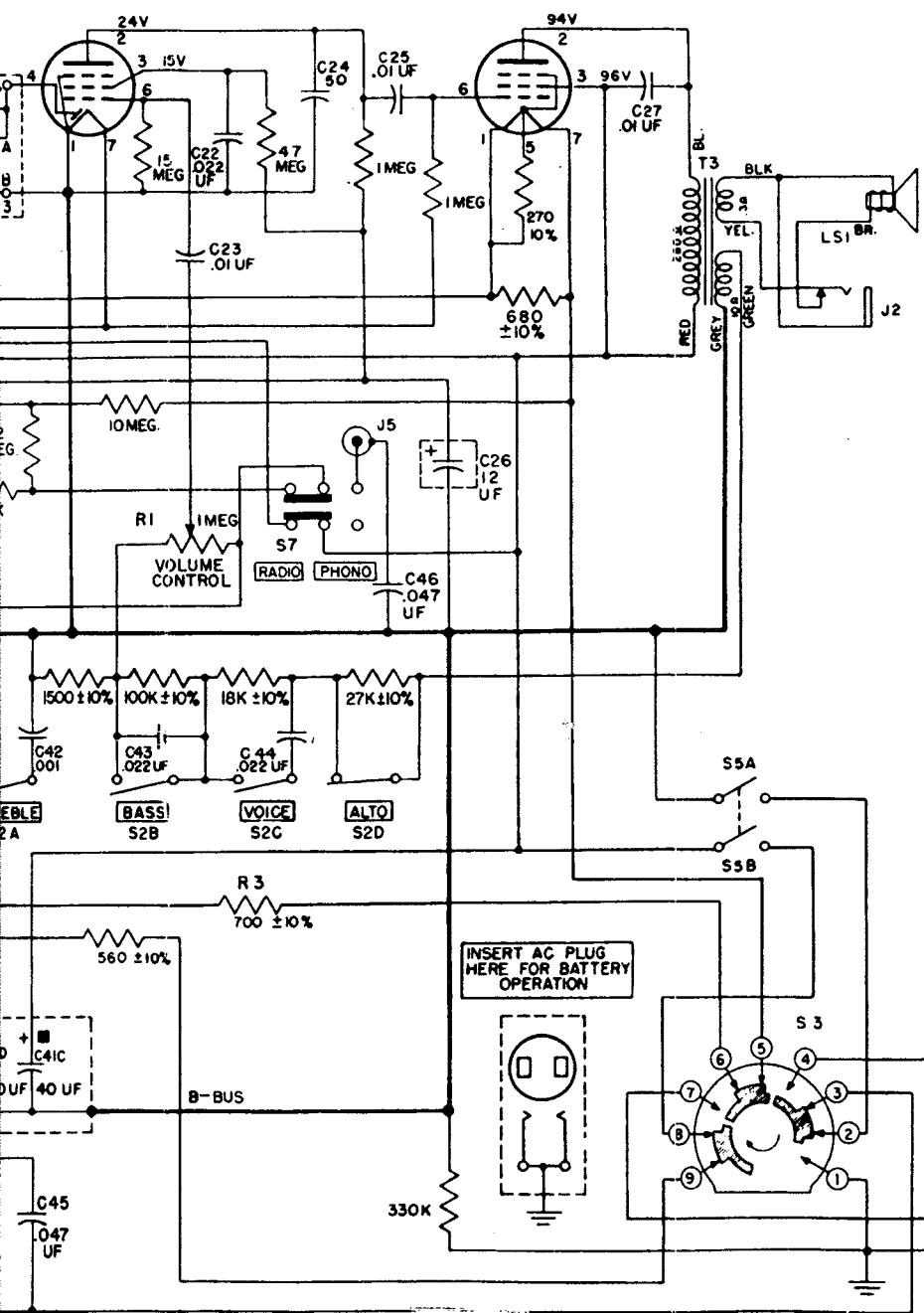
INSERT AC PLUG
 HERE FOR BATTERY
 OPERATION

TYPE Z1
 BATTERY
 PILOT LIGHT CIRCUIT



IU5
DET. AMPL.

3V4
AUDIO OUTPUT

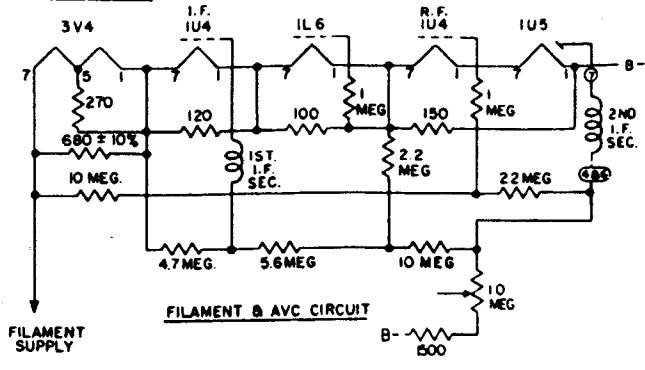
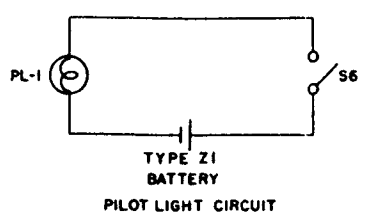
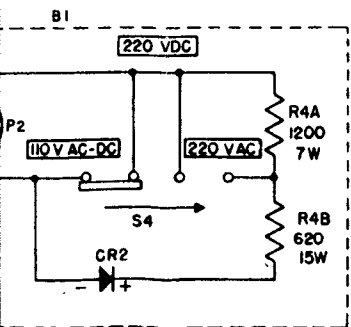


- NOTES**
1. RESISTANCE VALUES IN OHMS, CAPACITANCE IN MMF. UNLESS OTHERWISE SPECIFIED.
 2. IF TRANSFORMER NUMBERING STARTS WITH #1 TERMINAL AS FIRST TERMINAL CLOCKWISE AND ADJACENT TO MARKER, AS VIEWED FROM THE BOTTOM OF CHASSIS.
 3. ALL SECTIONS OF BAND SELECTOR SWITCH S1 SHOWN IN NONOPERATING POSITION. IN OPERATING POSITIONS SLIDING CONTACTS MOVE TO THE LEFT.
 4. ALL TONE BUTTONS S2 SHOWN IN RIGHT POSITION AS VIEWED FROM THE FRONT OF CABINET.
 5. S3 POWER CHANGEOVER SWITCH SHOWN IN POSITION FOR POWER LINE OPERATION.
 6. POWER ADAPTER SWITCH S4 SHOWN IN 110 VOLT AC-DC POSITION.
 7. ALL VOLTAGES MEASURED FROM COMMON RETURN TO POINTS INDICATED WITH A VACUUM TUBE VOLTMETER. — SET OPERATING ON 117V A.C.
 8. ALL RESISTORS ARE ± 20% TOLERANCE. 1/2 WATT CARBON UNLESS OTHERWISE SPECIFIED.
 9. RADIO PHONO SWITCH S7 SHOWN IN RADIO POSITION.

TUNING RANGES

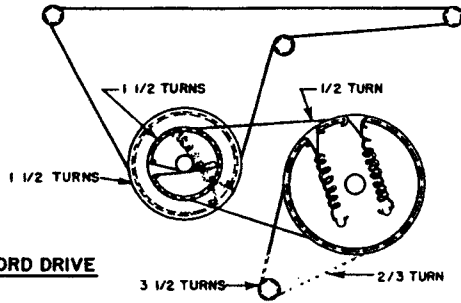
| | |
|------|---------|
| 540 | 1600 KC |
| 4MC | 9 MC. |
| 2MC | 4 MC. |
| 174 | 18.2 MC |
| 14.8 | 15.6 MC |
| 11.5 | 12.1 MC |
| 9.4 | 9.8 MC |

I.F. FREQUENCY 455 KC.
BATTERY PACK NO Z-985

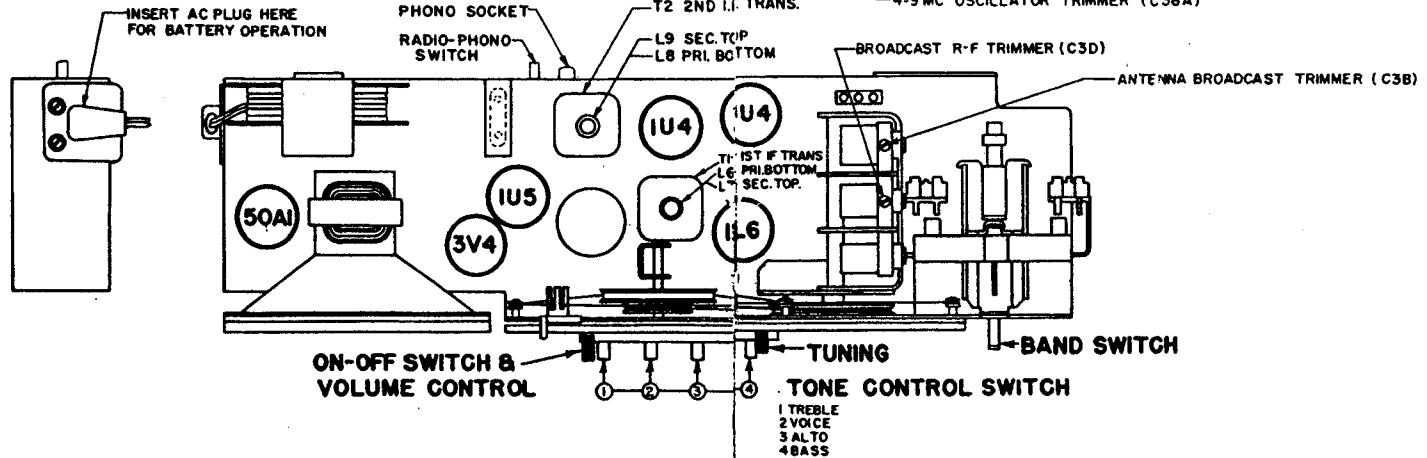
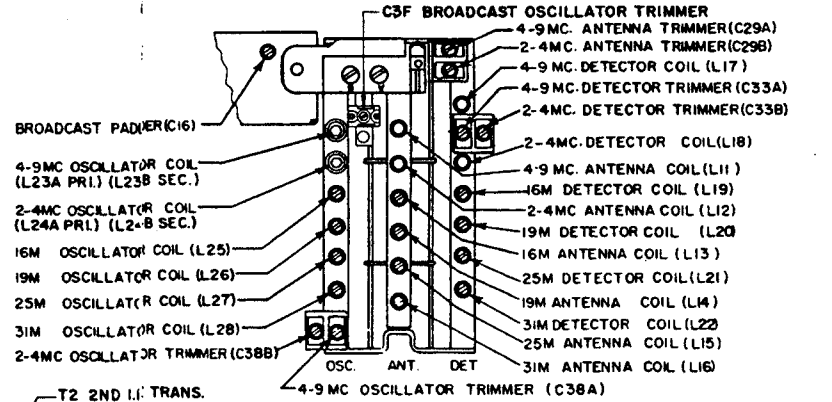


Tube, Trimmer Location and Dial Cable Drawing

DIAL CORD DRIVE



REAR VIEW OF BAND SELECTOR SWITCH.



TO THE SERVICE MAN:

Chassis 6A40 features a high gain tuned RF stage ahead of a conventional superheterodyne circuit with band spread tuning on the 31, 25, 19 and 16 meter bands. There are two continuous coverage bands, one covering 2-4 megacycles and one covering 4-9 megacycles.

If removal of the chassis from the cabinet ever becomes necessary this should be done with care.

The alignment of chassis 6A40 is conventional. However, care must be exercised when making adjustments, and the alignment procedure must be followed exactly. Set the chassis over a metal plate approximately the same distance the battery pack is from the bottom of the chassis when it is in the cabinet. This procedure will introduce the approximate amount of metal in the field of the RF and oscillator coils as when the chassis is in the cabinet. A signal generator of reasonable accuracy and good attenuation must be used. An output meter (AC) of the copper oxide rectifier type with a range of 1 to 30 volts in several steps is necessary to get accurate output readings. Alignment wrenches should be of the non-metallic type, especially when making adjustments of the higher frequencies.

The I.F. transformers incorporated in this receiver are of the new permeability tuned type. The advantage of an I.F. transformer of this type is its extreme stability under various humidity and temperature conditions. The upper coil is the secondary and the lower the primary. When adjusting these I.F. transformers the tuning wrench 68-19 can be inserted into the top slug, rotated until maximum output is obtained and then dropped down to the lower slug and the same operation repeated. The tuning wrench is so designed that tuning one slug does not affect the adjustment of the other.

Thermal Regulator Tube 50A1 is an automatic rheostat designed to keep the current in a circuit at a definite value. Should the supply voltage change, either upward or downward, the Thermal Regulator will automatically increase or decrease its resistance to compensate for this change and keep the current thru the controlled circuit at a constant value.

As used in the A600, the controlled circuit consists of the filament of the five vacuum tubes connected in series. A constant current thru these filaments is equivalent to a constant voltage applied across them.

The Thermal Regulator tube is capable of performing its function because of its peculiar electric thermal characteristics. Basically the tube consists of a fine iron wire filament hermetically sealed in a hydrogen atmosphere. By balancing the temperature resistance curve of the wire against the thermal conductivity curve of the gas, it is possible to make a unit that automatically changes its resistance to keep a constant current flowing over a large range of voltage variation.

By keeping the filament current of the vacuum tubes constant at 50 milliamperes we extend the line voltage range over which the set will operate from 90 to 130 volts and increase tube life by an indefinite amount.

ALIGNMENT PROCEDURE

| OPER. | CONNECT OSCILLATOR TO DUMMY ANTENNA | INPUT SIGNAL FREQ. | BAND | SET DIAL AT | TRIMMERS | PURPOSE |
|-------|---|--------------------|---------|------------------|------------------|---|
| 1 | Positive lead of signal generator to converter grid through a .1 Mfd. condenser & negative lead to negative filament of 1L6 tube. | 455 Kc | BC | 600 Kc | L 6,7,8,9 | Align I.F. |
| 2 | One turn loop coupled loosely to broadcast wavemagnet | 1600 Kc | BC | 1600 Kc | C3F | Set oscillator to scale |
| 3 | | 1400 Kc | BC | 1400 Kc | C3D | Alignment of BC Det. |
| 4 | | 1400 Kc | BC | 1400 Kc | C3B | Alignment of BC ant. |
| 5* | | 600 Kc | BC | 600 Kc | Rock C16 | Alignm't of BC at 600 Kc |
| 6 | | 8.75 Mc | 4-9 Mc | 8.75 Mc | C38A, C33A, C29A | Alignment of S. W. Oscillator Detector and Antenna. |
| 7* | 4.25 Mc | 4-9 Mc | 4.25 Mc | Rock L 23B | | |
| 8 | REPEAT OPERATIONS 6 & 7 | | | | | |
| 9 | 3.9 Mc | 2-4 Mc | 3.9 Mc | C38B, C33B, C29B | | |
| 10* | 2.1 | 2-4 Mc | 2.1 Mc | Rock L 24B | | |
| 11 | REPEAT OPERATIONS 9 & 10 | | | | | |
| 12 | 17.8 Mc | 16 Meters | 17.8 Mc | L 25, L 19, L 13 | | |
| 13* | 15.2 | 19 Meters | 15.2 | L 26, L 20, L 14 | | |
| 14 | 11.8 Mc | 25 Meters | 11.8 | L 27, L 21, L 15 | | |
| 15* | 9.6 Mc | 31 Meters | 9.6 Mc | L 28, L 22, L 16 | | |

* NOTE: Rock Tuning Condenser When Making Alignment Under Operations 5, 7, 10, 12, 13, 14 & 15.

NOTE: If Trimmers C3F, C3D, C3B are adjusted after procedures No. 2 through No. 15 are completed, it will be necessary to repeat alignment procedures No. 2 through No. 15.

CHASSIS PARTS LIST

Chassis Parts

Models A600 and A600L
Chassis 6A40 and 6A41

| Part No. | Dia. No. | Description | Price |
|----------|----------------|---|-------|
| 12-1825 | | Bandswitch Mtg. Brkt. (part of S-40856) | .20 |
| 12-1873 | | Bracket (part of S-40856) | .05 |
| 12-2052 | | Dial Light Brkt. (part of S-20793) | .10 |
| 12-2053 | | Dial Support Brkt. | .06 |
| 12-2054 | | Pointer Shaft Brkt. | .15 |
| 12-2056 | | Tuning Shaft Brkt. | .02 |
| 15-57 | | Cap & Insulator (part of S-15785) | .10 |
| 19-163 | | Coil Ret. Clip (1 part of Ea. S-17714, 17715, 17716, 17717, 17718, 17719, 17720, 17721, 17726, 17728, 17729, 17731, 23856, 23858, 40860, 40870, 40871, and 40872) | .02 |
| 19-189 | | Coil Mtg. Clip | .02 |
| 19-249 | | Coil Mtg. Clip | .03 |
| 22-3 | C6,13,23,25,34 | .01 Mfd. Ceramic Disc 500V | .26 |
| 22-4 | C2 | .0047 Mfd. Ceramic Disc 500V | .26 |
| 22-6 | C1 | 470 Mmf. Ceramic Disc 500V | .26 |
| 22-11 | C21 | .0033 Mfd. Ceramic Disc 500V | .25 |
| 22-17 | C42 | .001 Mfd. Ceramic Disc 500V | .25 |
| 22-1390 | C14 | 470 Mmf Mica 500V | .26 |
| 22-1392 | C30 | 25 Mmf Ceramic 500V | .33 |
| 22-1433 | C39 | 2750 Mmf Mica 500V | .65 |
| 22-1674 | C24 | 50 Mmf Ceramic 500V | .20 |
| 22-1741 | C41A,B,C,D | Electrolytic 60/150V 20/150V 40/150V 200/10V 50 Mmf Ceramic 500V | .20 |
| 22-1761 | C31 | 50 Mmf Ceramic 500V | .20 |
| 22-1775 | C40, 47 | .047 Mfd 400V | .26 |
| 22-1777 | C10 | .1 Mfd Paper 200V | .26 |
| 22-1778 | C46 | .047 Mfd Paper 200V | .26 |
| 22-1779 | C27 | .01 Mfd Paper 600V | .26 |
| 22-1953 | C17 | 10 Mmf Ceramic 500V | .35 |
| 22-2056 | C26 | 12 Mfd Electrolytic 12/150V | 1.20 |
| 22-2058 | C5, 8 | 270 Mmf Mica 500V | .26 |
| 22-2071 | C20,43,44 | .022 Mfd. Paper 200V | .26 |
| 22-2072 | C22 | .022 Mfd. Paper 400V | .26 |
| 22-2126 | C15 | 250 Mmf. Ceramic 500V | .26 |
| 22-2218 | C11 | .001 Mfd 500V | .26 |
| 22-2279 | C18, 35 | 120 Mmf Ceramic 500V | .30 |
| 22-2280 | C36 | 120 Mmf Ceramic 500V | .35 |
| 22-2282 | C16 | Broadcast Padder | |
| 22-2284 | C33A,B | 2 Section Trimmer | |
| 22-2329 | C28 | 15 Mmf Ceramic 500 v | .55 |
| 22-2379 | C49 | 12 Mmf 500 v | .20 |
| 22-2569 | C45 | .047 Mfd 600V | |
| 22-2720 | C48 | 1.0 Mmf 500V | .35 |
| 22-2726 | WU | Broadcasting Sec. Trimmer | |
| 22-2929 | C3A,B,C,D,E | Gang Condenser and Trimmers | |
| 22-2933 | C38A,B | 2 Section Trimmer | |
| 22-2934 | C29A,B | 2 Section Trimmer | |
| 22-2935 | C37 | .004 Mfd Mica 500V | |
| 26-575 | | Dial Scale (used on Chassis 6A40) | |
| 26-576 | | Dial Scale (used on Chassis 6A41) | |
| 54-34 | | 6-32 x 1/4 x 3/32 Hex Nut (1 used on S-22197, 1 Mts. 212-13 and 2 Mt. ea. 95-1148 & 1149) | .01 |
| 54-139 | | 3/8-32 x 9/16 Palnut (Mts. 63-2276) | .01 |
| 57-1911 | | Trim Plate (used with 85-543) | .10 |
| 57-1986 | | Scale Background Plate (used on Chassis 6A40) | .75 |
| 57-2030 | | Scale Background Plate (used on Chassis 6A41) | .75 |
| 59-300 | | Dial Pointer | .50 |
| 63-2276 | R1 | Volume Control & Switch | 1.81 |
| 63-2395 | R4A,R4B | 1200 Candohm 7 W - 620 Candohm 15 W | |
| 63-2839 | R2 | 130 Ohm 3 W WW 10% | .50 |
| 63-2930 | R3 | 700 Ohm 3 W WW 10% | .35 |
| 78-274 | | Electrolytic Socket | .03 |
| 78-543 | J4 | 4 Contact Socket (part of S-15785) | .13 |
| 78-802 | J1 | Wavemagnet Ant. Socket | .10 |
| 78-806 | | Miniature Tube Socket | .15 |

| | | | |
|-----------|-----|--|-------|
| 78-807 | | Miniature Tube Socket (4 used) | .15 |
| 78-844 | J3 | Adapter Socket (220V) | .25 |
| 78-846 | | Noval Miniature Tube Socket | .20 |
| 78-890 | J5 | Connector Socket | .10 |
| 80-69 | | Dial Cord Tension Spring (1 used on Ea. S-20783 and 20805) | .05 |
| 80-1091 | | Dial Cord Tension Spring (used on S-24395) | .08 |
| 83-1071 | | Threaded Ret. Strip (1 part of Ea. S-17714, 17715, 17716, 17717, 17718, 17719, 17720, 17721, 17726, 17728, 17729 & 40860) | .02 |
| 83-1880 | | Ant. Terminal Strip (used on 12-1825) | .20 |
| 83-1919 | | 2 Lug Terminal Strip | .05 |
| 83-2023 | | 4 Lug Terminal Strip | |
| 83-2307 | | 4 Lug Terminal Strip (part of S-22197) | .06 |
| 85-473 | S4 | 3 Position Switch | |
| 85-495 | S7 | Phono-Radio Switch | .40 |
| 85-502 | S1 | Bandswitch (Part of S-40856) | 12.25 |
| 85-503 | S2 | Tone Control Switch | 1.00 |
| 85-520 | S3 | Power Change-over Switch | 1.00 |
| or 85-543 | S3 | Power Change-over Switch | 1.40 |
| 86-33 | | Terminal (3 used) | .04 |
| 93-2 | | Brass Washer (2 used on Ea. 78-802 and 844) | .01 |
| 93-125 | | Lockwasher (1 Mts. 212-13 and 2 Mt. Ea. 95-1148 & 1149) | .01 |
| 93-209 | | .031 x .140x7/16 Steel Washer (2 Mt. 26-575 or 576) | .01 |
| 93-1073 | | Insulating Washer (used with 78-890) | .02 |
| 93-1213 | | .149 x 3/8 x 3/16 Steel Washer (used on 212-13) | .06 |
| 94-295 | | Gang Capacitor & Speaker Mtg. Bushing (6 used) | .04 |
| 94-706 | | Tuning Slug Insert (1 part of Ea. S-17731 & 40871) | .10 |
| 94-773 | | Insert (1 part of Ea. S-23856, 40870 & 40872) | .06 |
| 94-812 | | Coil Insert Bushing (part of S-20844) | .05 |
| 95-1148 | T1 | 1st I. F. Transformer | 1.60 |
| 95-1149 | T2 | 2nd I.F. Transformer | 1.60 |
| 95-1369 | T3 | Audio Output Transformer (part of S-22197) | 2.50 |
| 113-8 | | 6-32 x 1/4 x 1/4 Hex Hd. Mach. Screw-Lockwasher Att. (1 Mts. Ea. 12-2056 & 22-2282, 2Mt. S-20793 & 6 part of S-40856) | .02 |
| 113-13 | | 6-32 x 7/16 x 1/4 Hex Hd. Mach. Screw-Lockwasher Att. (1 used on 22-2520 & 3 on S-22197) | .02 |
| 113-18 | | 6-32 x 5/16 x 1/4 Hex Hd. Mach. Screw-Lockwasher Att. (Part of S-40856) | .02 |
| 113-19 | | 6-32 x 9/16 x 1/4 Hex Hd. Mach. Screw-Lockwasher Att. (part of S-22197) | .02 |
| 113-56 | | 4-40 x 1/4 x 1/4 Hex Hd. Mach. Screw-Lockwasher Att. (2 Mt. 85-520 or 543) | .02 |
| 114-39 | | 8-32 x 1/4 x 1/4 Hex Hd. Self-tap Screw (Mts. 12-2053) | .01 |
| 114-48 | | 6-32 x 1/4 x 1/4 Hex Hd. Mach. Screw (Part of S-40856) | .01 |
| 114-51 | | 6-32 x 1/2 x 1/4 Hex Hd. Mach. Screw (2 used on 22-2520) | .01 |
| 114-116 | | 6-32 x 1 1/2 x 1/4 Hex Hd. Mach Screw (Mts. 212-13) | .02 |
| 114-157 | | 6-32 x 1/2 x 1/4 Hex Hd. Self-tap Screw (2 used on 26-575 or 576) | .01 |
| 114-297 | | 6-32 x 1/4 x 1/4 Hex Hd. Self-tap Screw (1 used on 12-2054; 2 on 85-503 and 3 on S-40856) | .01 |
| 114-435 | | 8-32 x 5/16 x 1/4 Hex Hd. Self-tap Screw-flat washer att. (2 Mt. S-20776) | .03 |
| 114-437 | | 6-32 x 7/16 x 1/4 Hex Hd. Mach. Screw (2 used on 26-575 & 576) | .02 |
| 125-17 | | Rubber Grommet (6 used) | .03 |
| 139-96 | | Speaker Baffle (part of S-22197) | .25 |
| 149-85 | | Iron Core (part of S-20844) | .10 |
| 149-86 | | Iron Core (1 part of Ea. S-17714, 17715, 17716, 17717, 17718, 17719, 17720, 17721, 17726, 17728, 17729, & 40860) | .10 |
| 149-89 | | Iron Core (1 part of Ea. S-23856) | .10 |
| 149-160 | | Iron Core (1 part of Ea. S-17731, 40870, 40871, and 40872) | .10 |
| 188-148 | | Retaining Ring (used on S-20794) | .02 |
| 188-149 | | Retaining Ring (used on S-20791) | .02 |
| 188-168 | | Retaining Ring (used on S-20794) | .06 |
| 196-174 | | Speaker Gasket | .25 |
| 212-9 | CR2 | Selenium Rectifier | |
| 212-13 | CR1 | Selenium Rectifier | 2.25 |

| | | |
|---------|-----|---|
| 100-162 | | Thermal Resistor |
| S-14403 | L5 | R.F. Choke Coil Assem. |
| S-15785 | 1W | Battery Cable & Socket Assem. |
| S-17686 | | Coil Support Brkt. Assm. (Part of S-40856) |
| S-17709 | L4 | Osc. Coil Assem. (B.C.) |
| S-17714 | L19 | R.F. Coil Assem. (16M) (part of S-40856) |
| S-17715 | L20 | R.F. Coil Assem. (19M) (part of S-40856) |
| S-17716 | L21 | R.F. Coil Assem. (25M) (part of S-40856) |
| S-17717 | L22 | R.F. Coil Assem. (31M) (part of S-40856) |
| S-17718 | L13 | Ant. Coil Assem. (16M) (part of S-40856) |

Chassis Parts

Models A600 and A600L
Chassis 6A40 and 6A4L

| <u>Part No.</u> | <u>Dia. No.</u> | <u>Description</u> | <u>Price</u> |
|-----------------|-----------------|---|--------------|
| S-17719 | L14 | Ant. Coil Assem. (19M) (part of S-40856) | .50 |
| S-17720 | L15 | Ant. Coil Assem. (25M) (part of S-40856) | .50 |
| S-17721 | L16 | Ant. Coil Assem. (31M) (part of S-40856) | .50 |
| S-17726 | L25 | Osc. Coil Assem. (16M) (part of S-40856) | .50 |
| S-17728 | L27 | Osc. Coil Assem. (25M) (part of S-40856) | .50 |
| S-17729 | L28 | Osc. Coil Assem. (31M) (part of S-40856) | .50 |
| S-17731 | L24A,B | Osc. Coil Assem. (2-4Mc) (part of S-40856) | .50 |
| S-20776 | | A.C. Cord & Reel Assem. | 1.10 |
| S-20783 | | Drive Cord & Eyelet Assem. (Gang) | 7.50 |
| S-20791 | | Pointer Pulley & Shaft Assem. | .08 |
| S-20793 | | Dial Mtg. Brkt. & Rivet Assem. | .35 |
| S-20794 | | Drive Shaft & Pulley Assem. | .55 |
| S-20805 | | Drive Cord & Eyelet Assem. (Idler) | .60 |
| S-20844 | L2 | DET Coil Assem. (BC) | .08 |
| S-22197 | | 5 1/4" PM Speaker & Gasket Assem. | .60 |
| S-23856 | L18 | 2-4 Mc R.F. Coil | 10.50 |
| S-23857 | L10 | Ant. Loading Coil Assem. (part of S-40856) | |
| S-23858 | L29 | Ant. Coupling Coil Assem. | .85 |
| S-23863 | | R.F. Terminal Strip Assem. | .65 |
| S-24395 | | Drive Cord & Eyelet Assem. (Pointer) | .20 |
| S-40856 | | Bandswitch Brkt. & Coil Assem. | .15 |
| S-40860 | L26 | Osc. Coil Assem. (19M) (part of S-40856) | |
| S-40870 | L11 | Ant. Coil Assem. (4-9 Mc) (part of S-40856) | |
| S-40871 | L23A,B | Osc. Coil Assem. (4-9 Mc) (part of S-40856) | |
| S-40872 | L17 | R.F. Coil Assem. (4-9 Mc) (part of S-40856) | |
| S-41392 | L12 | 2-4 Mc Antenna Coil | |
| S-41839 | L19 | 16 M R.F. Coil | |
| S-41840 | L20 | 19 M R. F. Coil | |
| S-41841 | L21 | 25 M R.F. Coil | |
| S-41842 | L22 | 31 M R.F. Coil | |

S-20776 A.C. Cord & Reel Parts

| | | |
|---------|--|------|
| 11-126 | A.C. Cord & Plug (part of S-21892) | |
| 12-2170 | Mounting Brkt. - L.H. | |
| 12-2171 | Mounting Brkt. - R. H. | .25 |
| 12-2172 | Protective Bracket | .25 |
| 27-207 | Reel Disc | .05 |
| 27-208 | Cover Disc | .30 |
| 27-209 | Tension Spring Ret. Disc. | .25 |
| 27-210 | Contact Spring Ret. Disc. | .10 |
| 27-211 | Disc Cover (2 used) | .15 |
| 80-1012 | Tension Spring | .15 |
| 80-1013 | Contact Spring (1 part of Ea. S-21896 & 21897) | 1.10 |
| 112-947 | 6-20 x 1/2 Phils. Flat Hd. Self-tap Screw (2 used) | .02 |
| 114-174 | 4-40 x 1/4 x 3/16 Hex Hd. Self-tap Screw (2 used) | .02 |
| S-21892 | A.C. Cord & Shaft Assem. | 1.25 |
| S-21896 | Contact Spring & Wire Assem. - Short | .15 |
| S-21897 | Contact Spring & Wire Assem. - Long | .15 |

CABINET PARTS LIST

Cabinet Parts

| | | |
|---------|---|-----|
| 2985X | Complete Battery Pack | |
| 12-1082 | Telescoping Ant. Mtg. Brkt. | .06 |
| 12-2058 | Inside Cover Hinge Brkt. (2 used on 43-234 or 245) | .10 |
| 14-1633 | Model A600 Portable Cabinet | |
| 14-1675 | Model A600L Portable Cabinet | |
| 16-1290 | Packing Carton | |
| 17-67 | | |

| | | | |
|---------|-----|--|------|
| 19-253 | | releasing Ant. Rod Ret. Clamp | .08 |
| 19-258 | | Battery Ret. Clip | .07 |
| 24-670 | | Retaining Clip (3 used) | .03 |
| 24-671 | | Inside Front Cover (used on 43-234) | 1.80 |
| 24-695 | | A. C. Plug Cover (used on Model A600 only) | .15 |
| 24-696 | | Inside Front Cover (used on 43-245) | 1.95 |
| 36-110 | | A. C. Plug Cover (used on Model A600L only) | .45 |
| 36-111 | | Cabinet Handle (part of 14-1675) | 1.00 |
| 40-73 | | Cabinet Handle (part of 14-1633) | 1.00 |
| 40-147 | | Cabinet Back Cover Hinge (2 part of cabinet) | .25 |
| 43-233 | | Inside Cover Stop Hinge | .15 |
| 43-234 | | Wavemagnet Ant. Housing (part of S-22865) | 1.25 |
| 43-244 | | Cover Housing (used on Model A600 only) | 1.65 |
| 43-245 | | Wavemagnet Ant. Housing (part of S-22892) | 1.60 |
| 44-29 | J2 | Cover Housing (used on Model A600L only) | 1.80 |
| 46-912 | | Headphone Jack | .75 |
| 46-913 | | Band Switch Knob (7 used on Model A600 only) | .10 |
| 46-1242 | | Tuning Knob (used on Model A600) | .15 |
| 46-1288 | | Volume Control Knob (used on Model A600) | .30 |
| 46-1289 | | Band Switch Knob (7 used on Model A600L only) | .10 |
| 46-1290 | | Tuning Knob (used on Model A600L) | .30 |
| 49-748 | IS1 | Volume Control Knob (used on Model A600L) | .30 |
| 54-341 | | 5 1/4" PM Speaker | |
| 54-369 | | 8-32 x 1/4 x 3/32 Hex Nut (2 Mt. S-15802 or S-21433) | .02 |
| 54-391 | | Cable Retaining Nut (2 used) | .05 |
| 56-320 | | 3/8 - 32 Hex Nut (used on Chassis) | .04 |
| 57-1520 | | Inside Cover Hinge Pin | .20 |
| 57-1725 | | Adapter Socket Cover Plate | .15 |
| 57-2318 | | Emblem Plate (used on 24-670 or 695) | .20 |
| 57-2319 | | Escutcheon (Model A600) | |
| 58-157 | | Escutcheon (Model A600L) | |
| 58-179 | P1 | Battery Plug | .05 |
| 58-182 | P2 | 3 Prong Plug (part of S-20809) | .15 |
| 69-108 | | Adapter Plug | |
| 69-292 | | 6-32 x 1/4 Rd. Hd. Mach. Screw (2 part of S-22866 or 22893) | .02 |
| 70-166 | | 4-40 x 1/4 Phils. Rd. Hd. Mach. Screw (2 Mt. 85-542 or 550) | .03 |
| 70-168 | | 6 x 1/2 Phils. Rd. Hd. Wood Screw (used on chassis) | .02 |
| 70-169 | | 4 x 1/2 Phils. Rd. Hd. Wood Screw (3 used on 57-2318 or 2319) | .02 |
| 70-189 | | 4 x 3/4 Phils. Rd. Hd. Wood Screw (4 used on 57-2318 or 2319) | .02 |
| 70-202 | | 6 x 5/16 Rd. Hd. Wood Screw (1 Mt. Ea. 19-258) | .03 |
| 70-214 | | 4 x 3/8 Phils. Bind Hd. Mach. Screw (Mts. 40-147) | .04 |
| 72-115 | | 6 x 1/2 Phils. Rd. Washer Hd. Wood Screw (1 used on 19-253 and 2 on S-22866 or 22893) | .04 |
| 72-121 | | 3 x 3/8 Phils. Flat Hd. Wood Screw (1 used on Ea. 159-49) | .03 |
| 78-985 | | 4 x 3/8 Phils. Flat Hd. Wood Screw (3 used on 24-671 or 696 and 5 on 43-234 or 245) | .03 |
| 80-976 | | Dial Light Socket | .20 |
| 83-1617 | | Cover Return Spring (2 used on 24-670 or 695) | .10 |
| 83-1876 | | Pull Tab (part of S-20809) | .06 |
| 83-2320 | | Push Button Felt Strip | .15 |
| 83-2422 | | Felt Strip | .07 |
| 83-2423 | | Wavemagnet Ant. Mtg. Strip (part of S-22866) | .30 |
| 85-542 | S6 | Wavemagnet Ant. Mtg. Strip (part of S-22893) | .30 |
| 85-550 | S6 | Momentary Contact Switch (S.P.) (Used on Model A600) | .40 |
| 86-254 | | Momentary Contact Switch (S.P.) (Used on Model A600L) | .45 |
| 93-126 | | Terminal (3 used) | .03 |
| 93-132 | | Lockwasher (2 used on S-15802 or 21433) | .01 |
| 93-799 | | .038 x 11/64 x 7/16 Steel Washer (1 used with ea. 112-919) | .01 |
| 93-1188 | | Brass Washer (1 used on Ea. S-22864 or 22891) | .02 |
| 93-1195 | | Lockwasher (2 used on Chassis) | .03 |
| 97-367 | | Brass Washer (used on Chassis) | .03 |
| 97-428 | | Handle Mtg. Stud (2 part of Cabinet) | .25 |
| 97-441 | | Wavemagnet Ant. Ret. Stud (2 part of S-22893 or 22866) | .20 |
| 100-171 | PL1 | Wavemagnet Ant. Mtg. Stud (part of S-22864 or 22891) | .10 |
| 112-419 | | Pilot Light Bulb | .20 |
| 112-919 | | Mach. Screw (2 part of cabinet) | .03 |
| 112-919 | | Screw (2 used on S-22865 or 22892) | .08 |

| | | | |
|----------|----|---|------|
| 112-920 | | 3-8 Phils. Bind. Hd. Self-tap Screw (4 part of S-22865 or 22892) | .02 |
| 114-197 | | Hexagon Washer Hd. Self-tap Screw (2 used on Chassis) | .02 |
| 114-294 | | 6-20 x 1/4 x 1/4 Hex Hd. Self-tap Screw (2 used on Ea. 12-2058) | .02 |
| 114-446 | | 6-32 x 1/4 x 1/4 Hex Hd. Self-tap Screw (used on 57-1520) | .02 |
| 156-42 | | Door Latch - Upper Half (part of cabinet) | 1.25 |
| 156-43 | | Door Latch - Lower Half (part of cabinet) | 1.25 |
| 157-7 | | Strike Fastener (2 part of cabinet) | .08 |
| 157-8 | | Strike Fastener (2 part of cabinet) | .05 |
| 159-49 | | Snap Button (2 used on cabinet & 2 part of Ea. S-22864 & 22891) | .01 |
| 166-75 | | Recessed Bumper (4 part of cabinet) | .10 |
| 199-160 | | Ant. Ins. Sleeve (2 used) | .08 |
| 202-1105 | | Special Booklet | .15 |
| 202-1199 | | Short Wave Program List | .10 |
| 202-1246 | | Short Wave Chart Book | |
| 202-1247 | | Operating Guide | |
| 202-1248 | | Service Notes | |
| S-15635 | | Wavemagnet Ant. Suction Cup Assem. (2 used) | .15 |
| S-15715 | B1 | Voltage Adapter Assembly | |
| S-15722 | | Ant. Knob & Latch Spring Assem. (part of S-15802) | .55 |
| S-15802 | E1 | Telescoping Ant. Assem. (used on Model A600 only) | 9.00 |
| S-20799 | | Front Cover Hinge Assem. - Left (part of 14-1633) | .75 |
| S-20800 | | Front Cover Hinge Assem. (part of 14-1633) | .75 |
| S-20809 | | Cable & Plug Assem. (part of S-22865 or 22892) | .40 |
| S-20811 | | Wavemagnet Ant. Wdg. Assem. (part of S-22865 or 22892) | 2.00 |
| S-21424 | | Front Cover Hinge Assem. - Left (part of 14-1675) | .85 |
| S-21425 | | Front Cover, Hinge, Assem. - Right (part of 14-1675) | .85 |
| S-21432 | | Ant. Knob & Latch Spring Assem. (part of S-21433) | .60 |
| S-21433 | | Telescoping Ant. Assem. (used on Model A600L only) | 8.80 |
| S-22864 | | Wavemagnet Ant. Cover Riveting Assem.(part of S-22865) | 1.70 |
| S-22865 | L1 | Wavemagnet Ant. - Complete (used on Model A600 only) | 6.00 |
| S-22866 | | Wavemagnet Ant. Mtg. Strip Assem. (used on Model A600 only) | .65 |
| S-22891 | | Wavemagnet Ant. Cover Assem. (part of S-22892) | 1.95 |
| S-22892 | | Wavemagnet Ant. - Complete (used on Model A600L only) | 6.65 |
| S-22893 | | Wavemagnet Ant. Mtg. Strip Assem. (used on Model A600L only) | .65 |