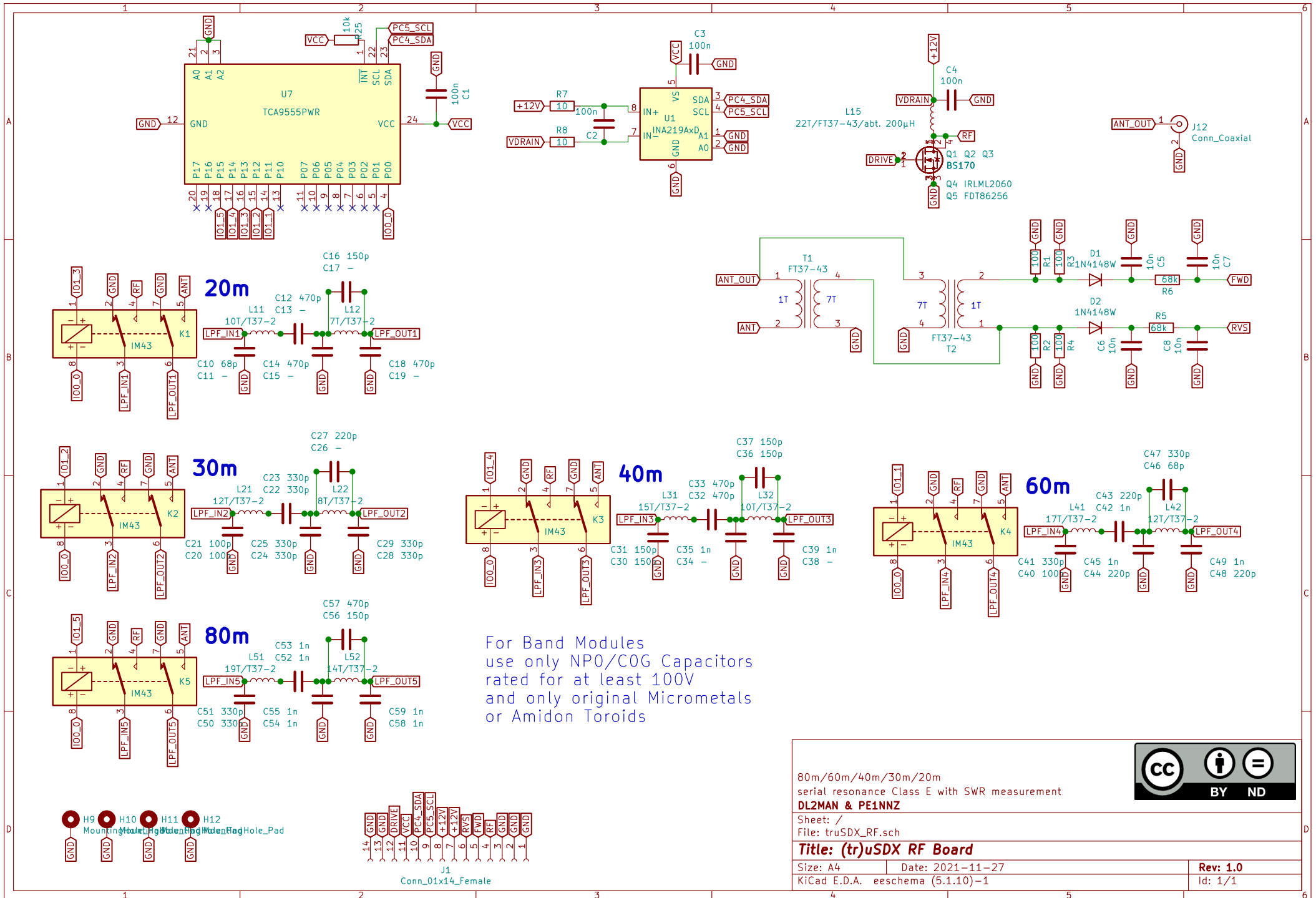


C25,C26,C27,C28 can be replaced with 0603 tantalum caps e.g: mouser ID: 581-TACL47K010X for best RX performance. Watch for Polarity in that case -> Minus to GND !

Changelog:
 Rev. 1.0: Initial Release
 Rev. 1.1: Separated "clean" 5V Line from "dirty" VCC line. (Never released)
 Rev. 1.2: Inserted caps on OpAmp Inputs to compensate OPamp DC Offsets. +Added Reverse Polarity protection (Diode + Polyfuse)

DL2MAN & PE1NNZ		
Sheet: / File: truSDX_Main_1.2.sch		
Title: (tr)uSDX Main Board with IO Board		
Size: A3	Date: 2023-04-02	Rev: 1.2
KiCad E.D.A. kicad (5.1.10)-1		Id: 1/1



80m/60m/40m/30m/20m
 serial resonance Class E with SWR measurement
DL2MAN & PE1NNZ

Sheet: /
 File: truSDX_RF.sch

Title: (tr)uSDX RF Board

Size: A4	Date: 2021-11-27
KiCad E.D.A. eschema (5.1.10)-1	Rev: 1.0 Id: 1/1

