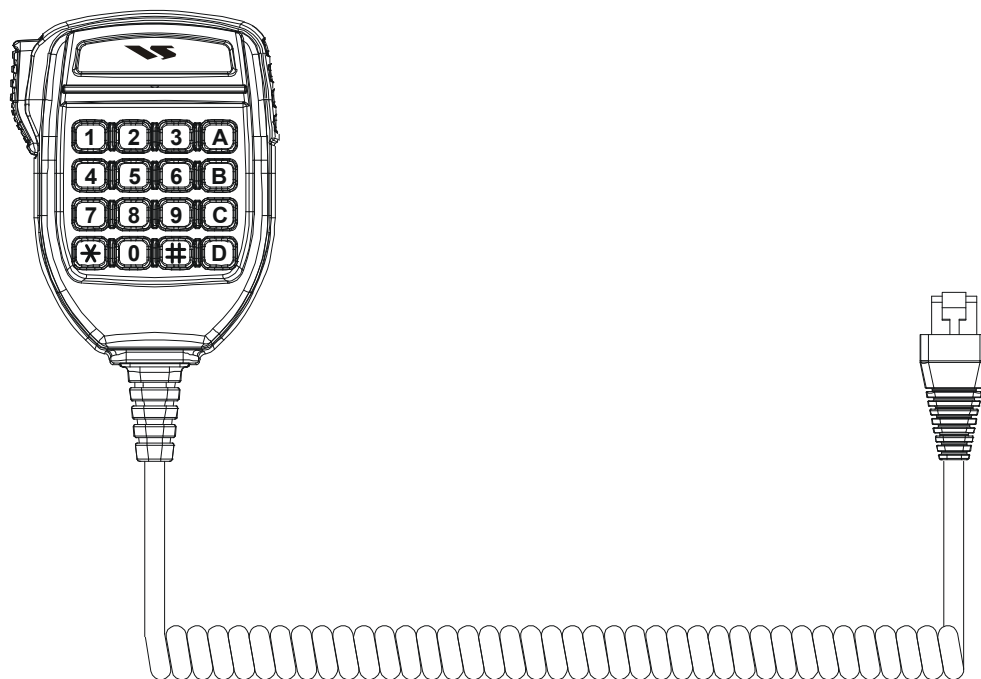


The MH-75A8J is a 16-Keypad/DTMF Microphone designed especially for Vertex Standard transceivers*.

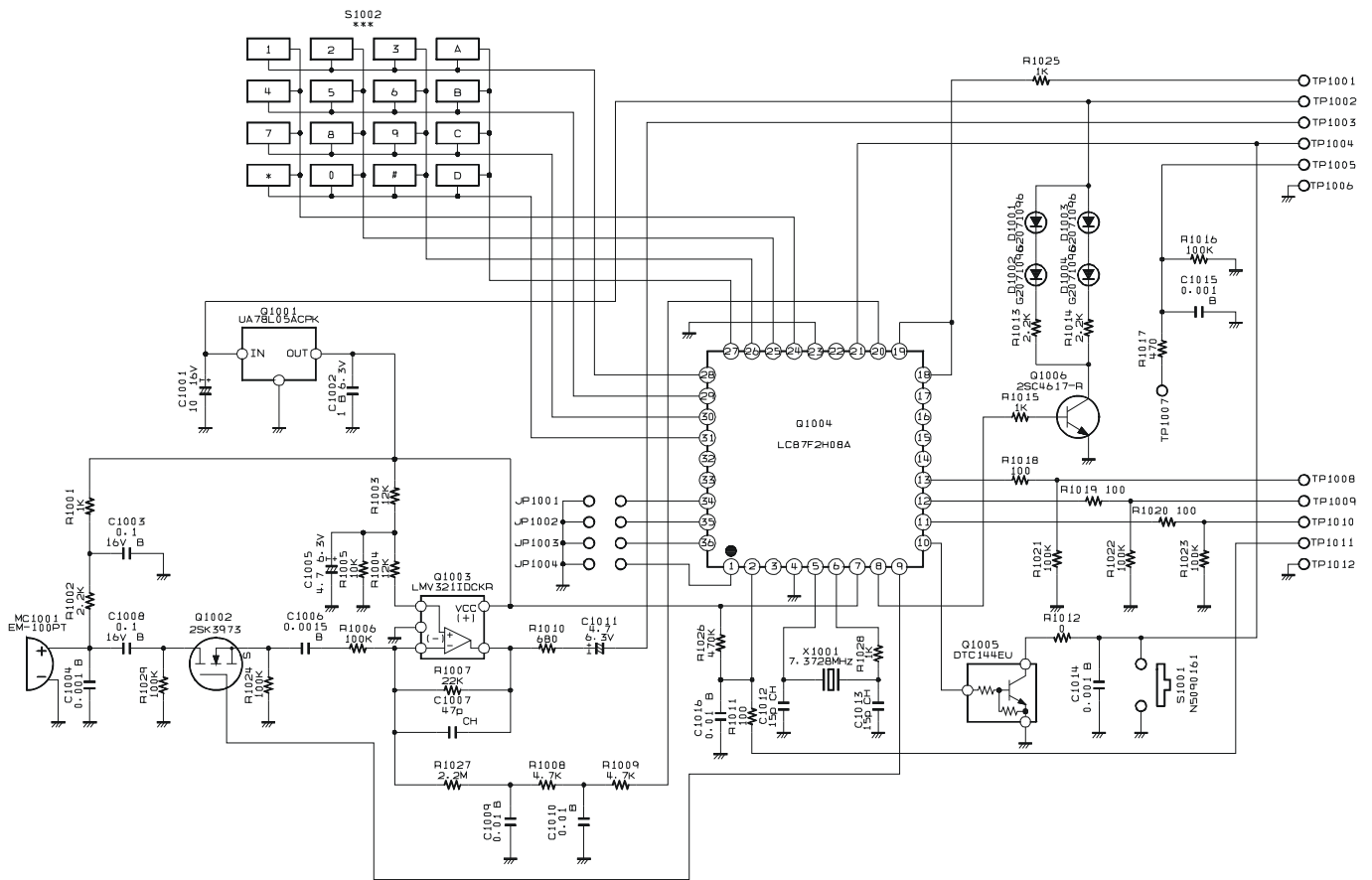
* Please refer to the Vertex Standard products catalog for the correct microphone for the transceiver you are using



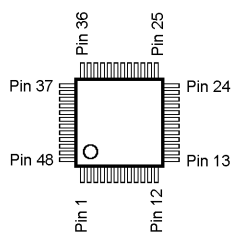
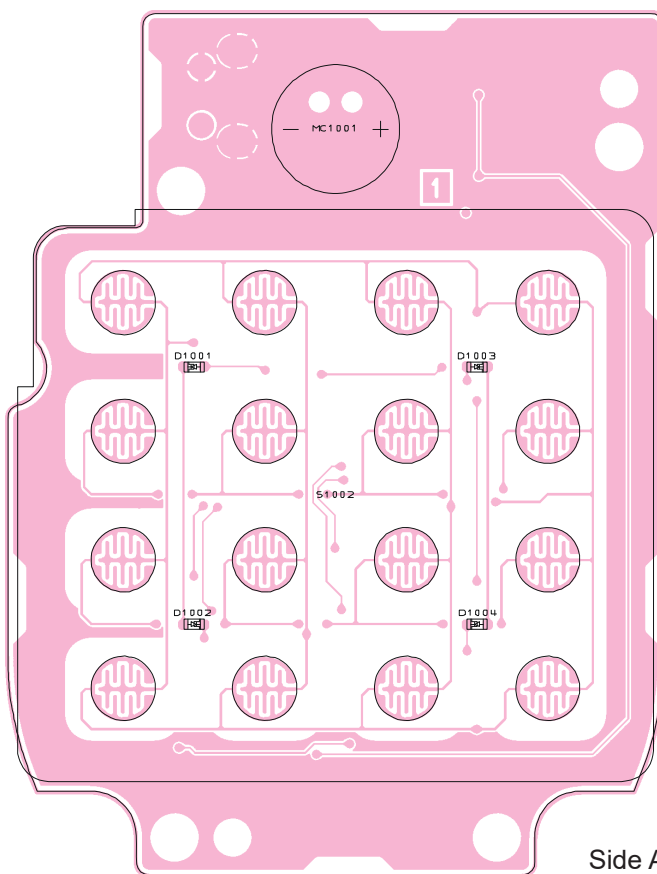
Specifications

Mic Element:	Electret Condenser
Mic Impedance:	600 Ohm
Operating Voltage Range:	8 to 9 V DC
Current Drain (Approx.):	20 mA
Operating Temperature Range:	-22 °F to +140 °F (-30 °C to +60 °C)
Weight (Approx.):	7 oz. (200 g)

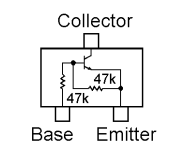
Circuit Diagram (Lot. 1)



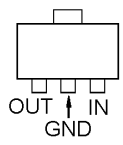
Parts Layout (Lot. 1)



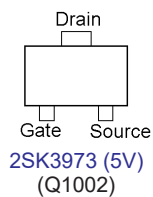
LC87F2H08AU
(Q1004)



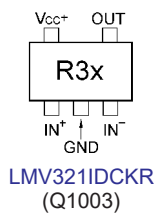
DTC144EUA (26)
(Q1005)



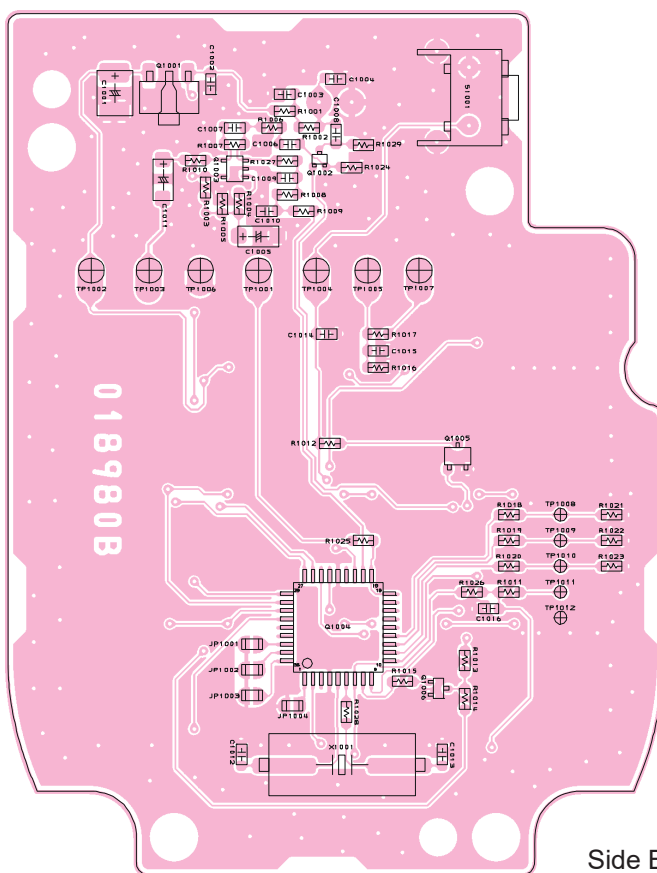
UA78L05A
(Q1001)



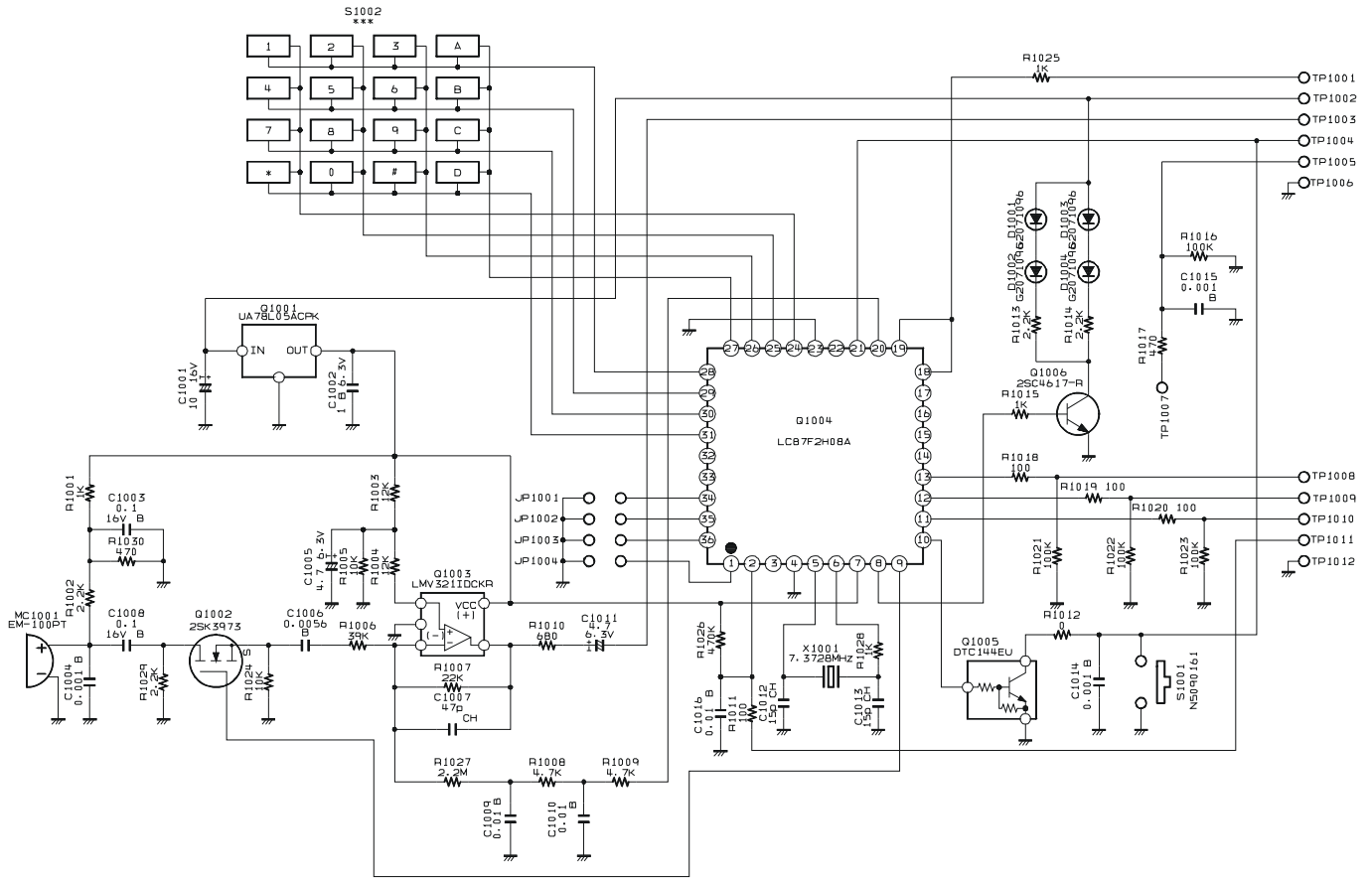
2SK3973 (5V)
(Q1002)



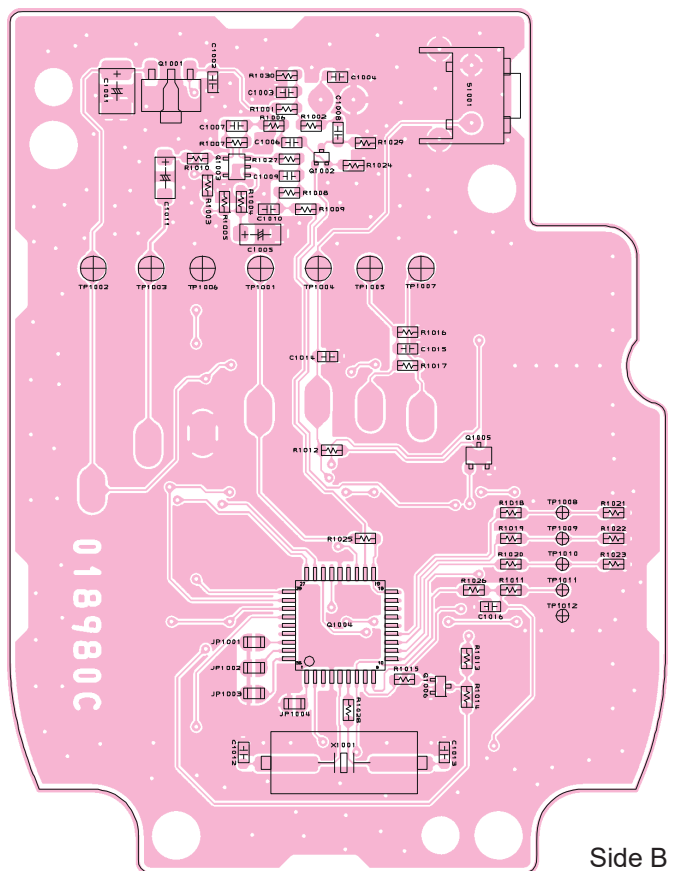
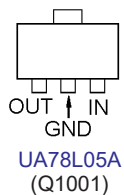
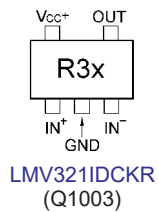
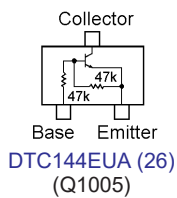
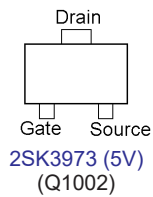
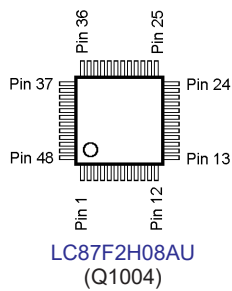
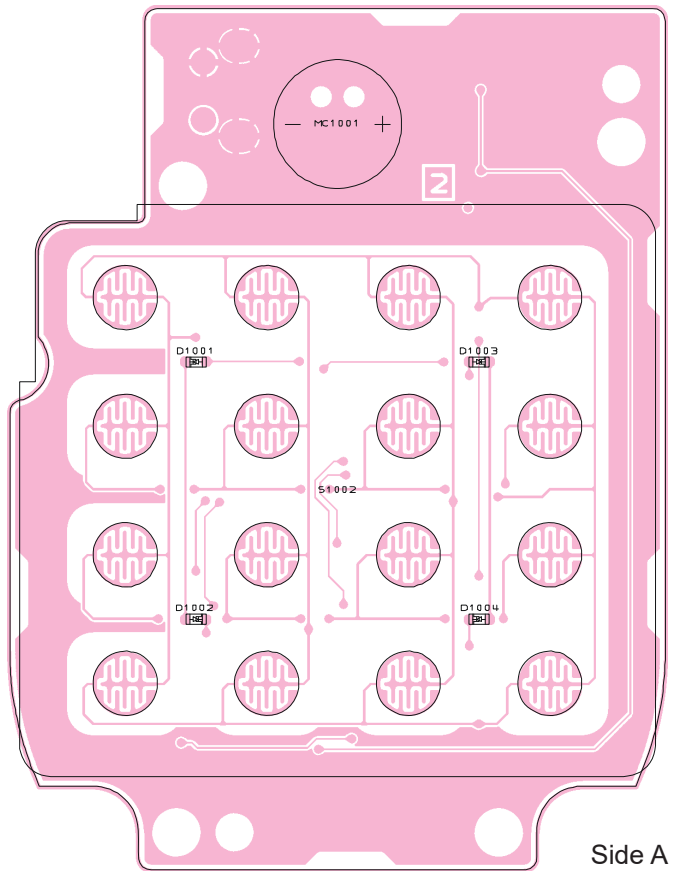
LMV321IDCKR
(Q1003)



Circuit Diagram (Lot. 2~)



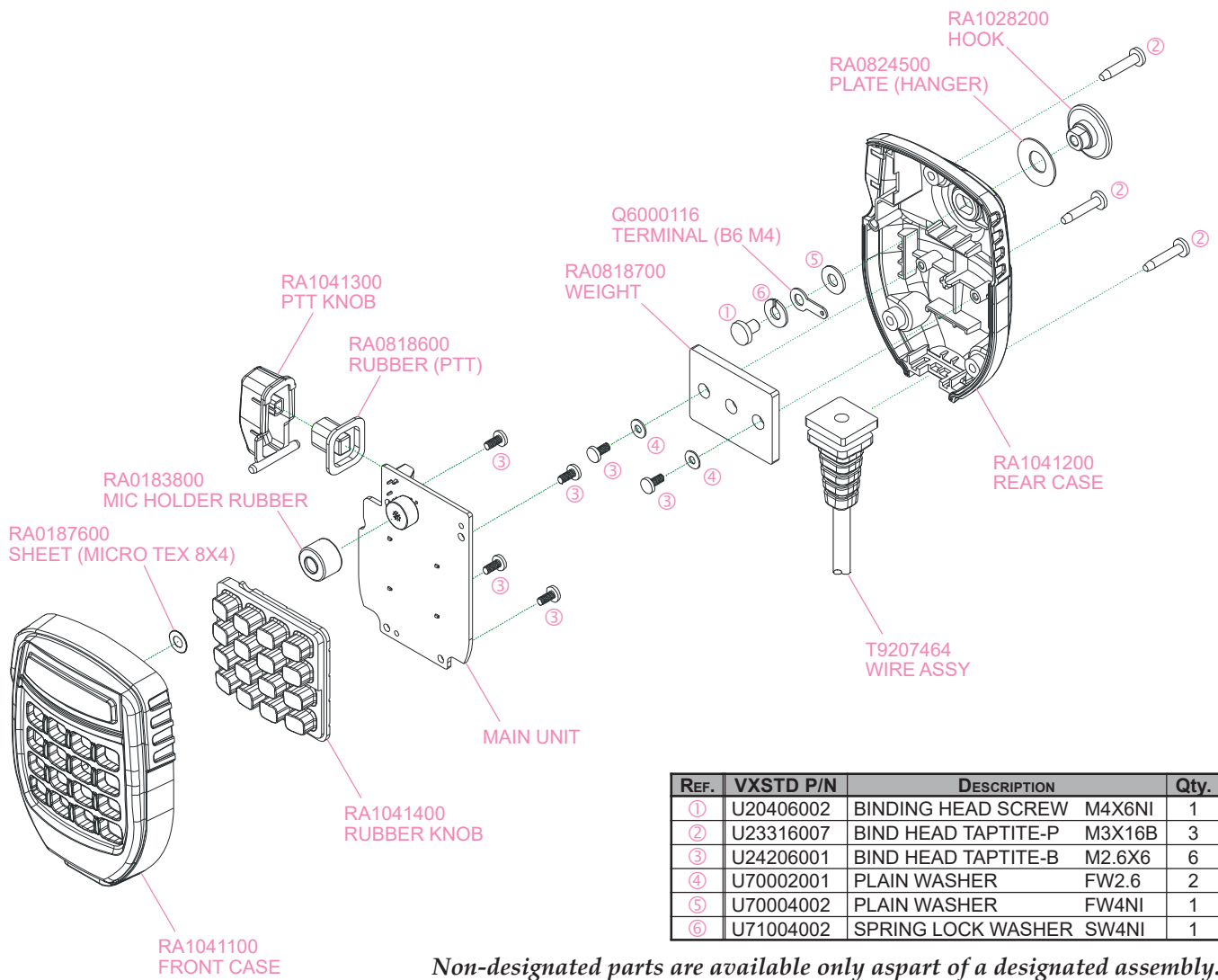
Parts Layout (Lot. 2~)



Parts List

REF.	DESCRIPTION	VALUE	V/W	TOL.	MFR'S DESIG	VXSTD P/N	VERS.	LOT.	SIDE
C 1001	CHIP TA.CAP.	10uF	16V		TEESVB21C106M8R	K78120025		1-	B
C 1002	CHIP CAP.	1uF	6.3V	B	GRM188B10J105KA01D	K22084801		1-	B
C 1003	CHIP CAP.	0.1uF	16V	B	GRM188B11C104KA01D	K22124805		1-	B
C 1004	CHIP CAP.	0.001uF	50V	B	GRM188B11H102KA01D	K22174821		1-	B
C 1005	CHIP TA.CAP.	4.7uF	6.3V		TEESVA0J475M8R	K78080017		1-	B
C 1006	CHIP CAP.	0.0056uF	50V	B	GRM188B11H562KA01D	K22174818		1-	B
C 1007	CHIP CAP.	47pF	50V	CH	GRM1882C1H470JA01D	K22174227		1-	B
C 1008	CHIP CAP.	0.1uF	16V	B	GRM188B11C104KA01D	K22124805		1-	B
C 1009	CHIP CAP.	0.01uF	50V	B	GRM188B11H103KA01D	K22174823		1-	B
C 1010	CHIP CAP.	0.01uF	50V	B	GRM188B11H103KA01D	K22174823		1-	B
C 1011	CHIP TA.CAP.	4.7uF	6.3V		TEESVA0J475M8R	K78080017		1-	B
C 1012	CHIP CAP.	15pF	50V	CH	GRM1882C1H150JA01D	K22174215		1-	B
C 1013	CHIP CAP.	15pF	50V	CH	GRM1882C1H150JA01D	K22174215		1-	B
C 1014	CHIP CAP.	0.001uF	50V	B	GRM188B11H102KA01D	K22174821		1-	B
C 1015	CHIP CAP.	0.001uF	50V	B	GRM188B11H102KA01D	K22174821		1-	B
C 1016	CHIP CAP.	0.01uF	50V	B	GRM188B11H103KA01D	K22174823		1-	B
D 1001	LED				19-213/S2C-AN1P2B/3T	G2071096		1-	A
D 1002	LED				19-213/S2C-AN1P2B/3T	G2071096		1-	A
D 1003	LED				19-213/S2C-AN1P2B/3T	G2071096		1-	A
D 1004	LED				19-213/S2C-AN1P2B/3T	G2071096		1-	A
MC1001	MIC. ELEMENT				EM-100PT	M3290029		1	A
MC1001	MIC. ELEMENT				PF0-1055P	M3290045		2-	A
Q 1001	IC				UA78L05ACPKE6(TAPE)	G1094229		1-	B
Q 1002	FET				2SK397300L	G3839738		1-	B
Q 1003	IC				LMV321IDCKR	G1093969		1-	B
Q 1004	IC				LC87F2H08AU-QFP-E	G1094621		1-	B
Q 1005	TRANSISTOR				DTC144EUA T106	G3070041		1-	B
Q 1006	TRANSISTOR				2SC4617 TL R	G3346178R		1-	B
R 1001	CHIP RES.	1k	1/16W	5%	RMC1/16 102JATP	J24185102		1-	B
R 1002	CHIP RES.	2.2k	1/16W	5%	RMC1/16 222JATP	J24185222		1-	B
R 1003	CHIP RES.	12k	1/16W	5%	RMC1/16 123JATP	J24185123		1-	B
R 1004	CHIP RES.	12k	1/16W	5%	RMC1/16 123JATP	J24185123		1-	B
R 1005	CHIP RES.	10k	1/16W	5%	RMC1/16 103JATP	J24185103		1-	B
R 1006	CHIP RES.	39k	1/16W	5%	RMC1/16 393JATP	J24185393		1-	B
R 1007	CHIP RES.	22k	1/16W	5%	RMC1/16 223JATP	J24185223		1-	B
R 1008	CHIP RES.	4.7k	1/16W	5%	RMC1/16 472JATP	J24185472		1-	B
R 1009	CHIP RES.	4.7k	1/16W	5%	RMC1/16 472JATP	J24185472		1-	B
R 1010	CHIP RES.	680	1/16W	5%	RMC1/16 681JATP	J24185681		1-	B
R 1011	CHIP RES.	100	1/16W	5%	RMC1/16 101JATP	J24185101		1-	B
R 1012	CHIP RES.	0	1/16W	5%	RMC1/16 000JATP	J24185000		1-	B
R 1013	CHIP RES.	2.2k	1/16W	5%	RMC1/16 222JATP	J24185222		1-	B
R 1014	CHIP RES.	2.2k	1/16W	5%	RMC1/16 222JATP	J24185222		1-	B
R 1015	CHIP RES.	1k	1/16W	5%	RMC1/16 102JATP	J24185102		1-	B
R 1016	CHIP RES.	100k	1/16W	5%	RMC1/16 104JATP	J24185104		1-	B
R 1017	CHIP RES.	470	1/16W	5%	RMC1/16 471JATP	J24185471		1-	B
R 1018	CHIP RES.	100	1/16W	5%	RMC1/16 101JATP	J24185101		1-	B
R 1019	CHIP RES.	100	1/16W	5%	RMC1/16 101JATP	J24185101		1-	B
R 1020	CHIP RES.	100	1/16W	5%	RMC1/16 101JATP	J24185101		1-	B
R 1021	CHIP RES.	100k	1/16W	5%	RMC1/16 104JATP	J24185104		1-	B
R 1022	CHIP RES.	100k	1/16W	5%	RMC1/16 104JATP	J24185104		1-	B
R 1023	CHIP RES.	100k	1/16W	5%	RMC1/16 104JATP	J24185104		1-	B
R 1024	CHIP RES.	10k	1/16W	5%	RMC1/16 103JATP	J24185103		1-	B
R 1025	CHIP RES.	1k	1/16W	5%	RMC1/16 102JATP	J24185102		1-	B
R 1026	CHIP RES.	470k	1/16W	5%	RMC1/16 474JATP	J24185474		1-	B
R 1027	CHIP RES.	2.2M	1/16W	5%	RMC1/16 225JATP	J24185225		1-	B
R 1028	CHIP RES.	1k	1/16W	5%	RMC1/16 102JATP	J24185102		1-	B
R 1029	CHIP RES.	2.2k	1/16W	5%	RMC1/16 222JATP	J24185222		1-	B
R 1030	CHIP RES.	470	1/16W	5%	RMC1/16 471JATP	J24185471		1-	B
S 1001	TACT SWITCH				SKHHLVA010	N5090161		1-	B
X 1001	XTAL U3B	7.3728MHz			7.3728MHZ	H0103280		1-	B
	MIC HOLDER RUBBER					RA0183800		1-	
	WIRE ASSY				AAG22X 300MM8PC	T9207464		1-	
	WIRE ASSY				GRN 70 (3)/(3)	T52507012		1-	

Exploded View



Non-designated parts are available only aspart of a designated assembly.