

# Frequency Expansion Information

*CONFIDENTIAL*

MODEL: FT-710	DATE: 03 OCTOBER 2022
ORIGINAL TX FREQ. RANGE: 160-6M AMATEUR BANDS	NEW TX FREQ. RANGE: 1.8 – 30, 50-54 MHz

## *Important Notice*

This information is solely for use by licensed members of MARS (Military Affiliate Radio System) or CAP (Civil Air Patrol), and release to any other party is not authorized. Use of any Amateur Radio product outside of the Amateur band is at the users own risk, and no guarantee of compliance with specifications outside the Amateur bands is expressed or implied. The Limited Warranty does not cover damage caused by any attempt to modify an apparatus for out-of-Amateur-band operation, nor does the Limited Warranty cover damage to components that may result from out-of-Amateur-band use.

## **Modification Procedure:**

<Modifications and how to start>

Access the Main Unit by removing the Bottom Case.

Solder a short at the P51 pad in the red box, see the below image.

You're done!

Starting method:

If you turn on the power while holding down the [DSP RESET] key and [FINE/FAST] key in same way as ALL RESET, it will start in the MARS/CAP specification with an extended transmission frequency.

Confirmation method:

Press [FUNC] to display the Menu.

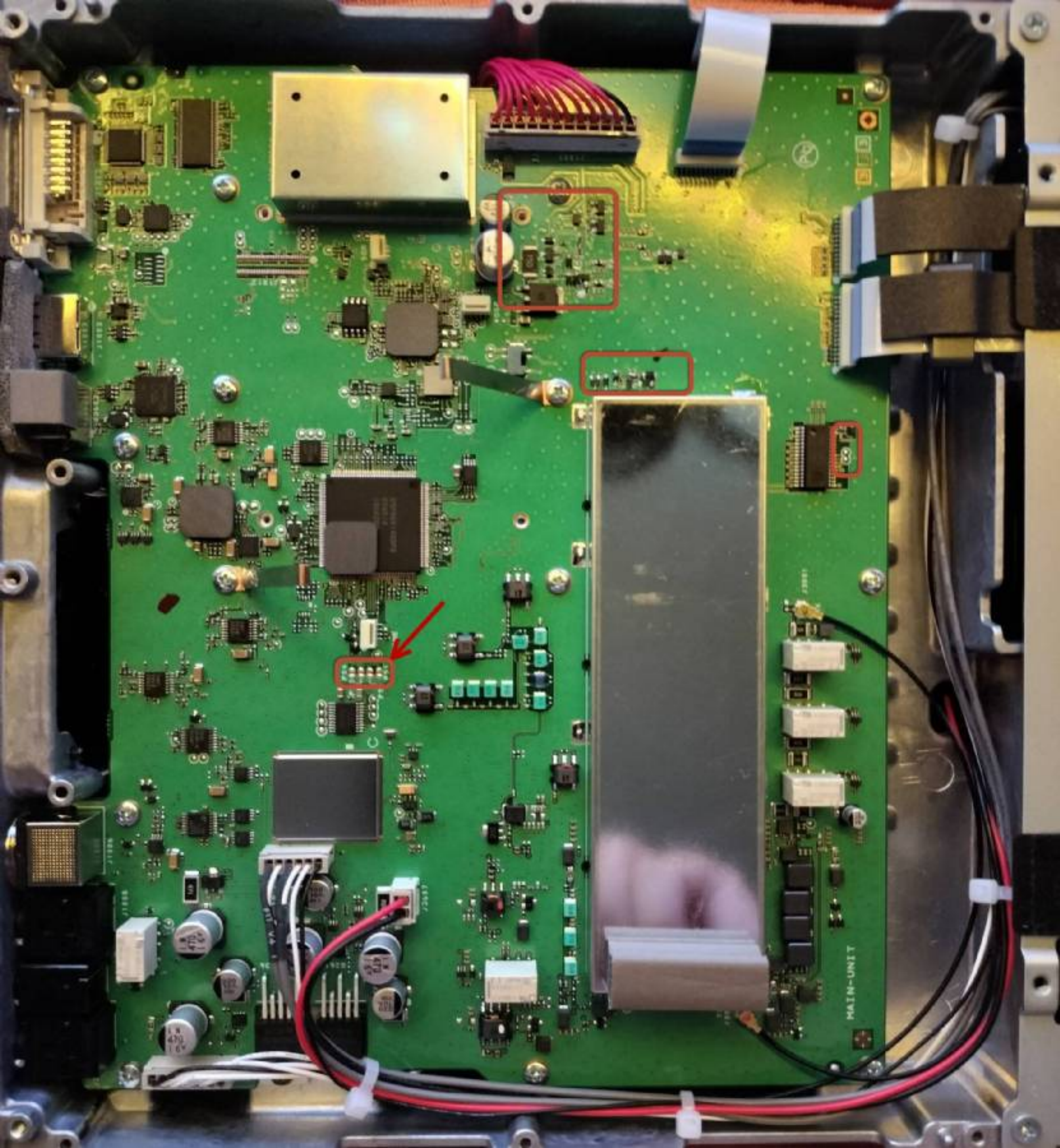
Select [EXTENSION SETTING] ⇒ [SOFT VERSION] on the touch panel.

If USA\_MC is displayed on the DST display, the modification is done correctly.

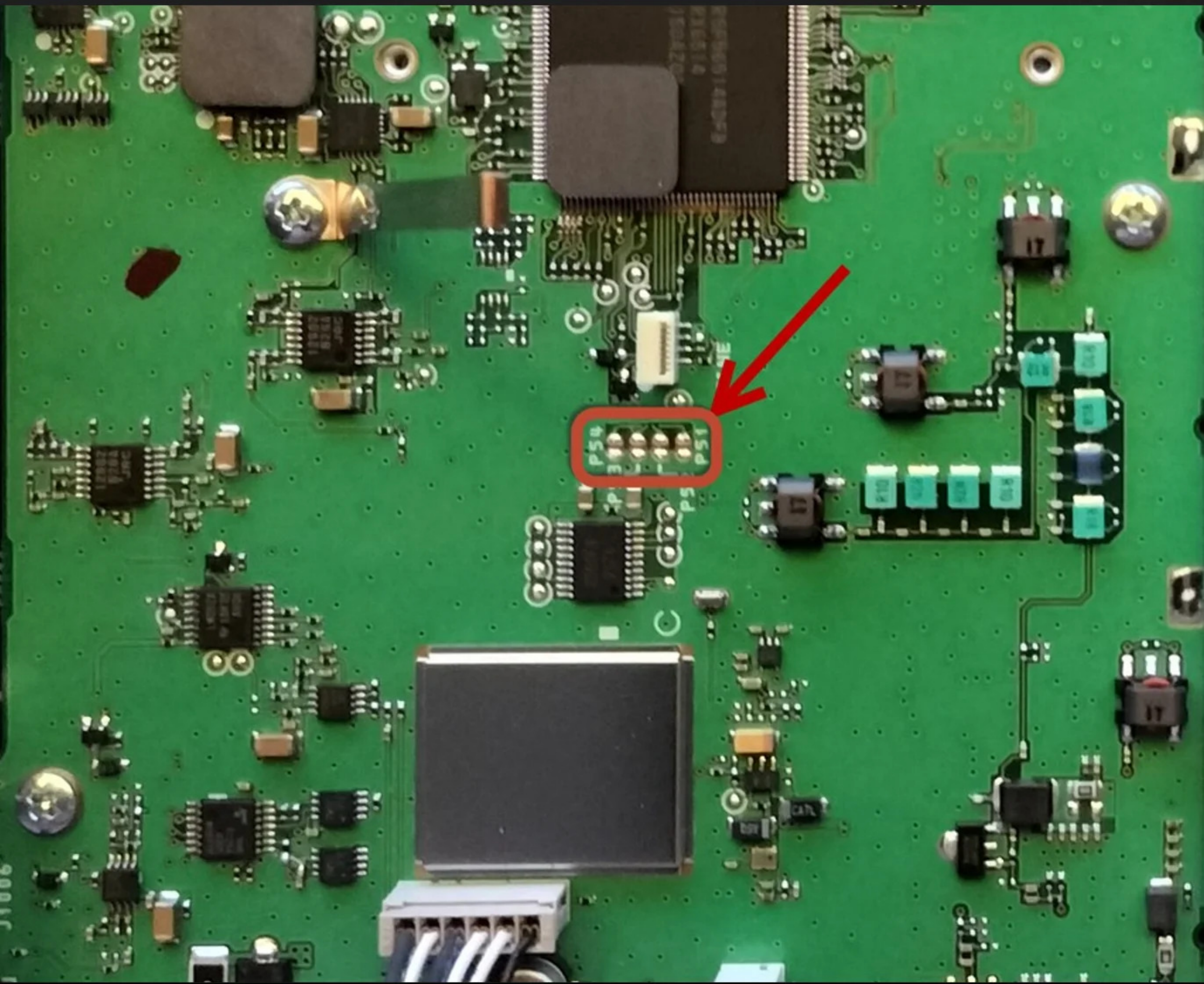
By the way, the USA specification of Normal only shows DST as USA.

Note: After modification, the operation specifications are only guaranteed within the amateur bands.

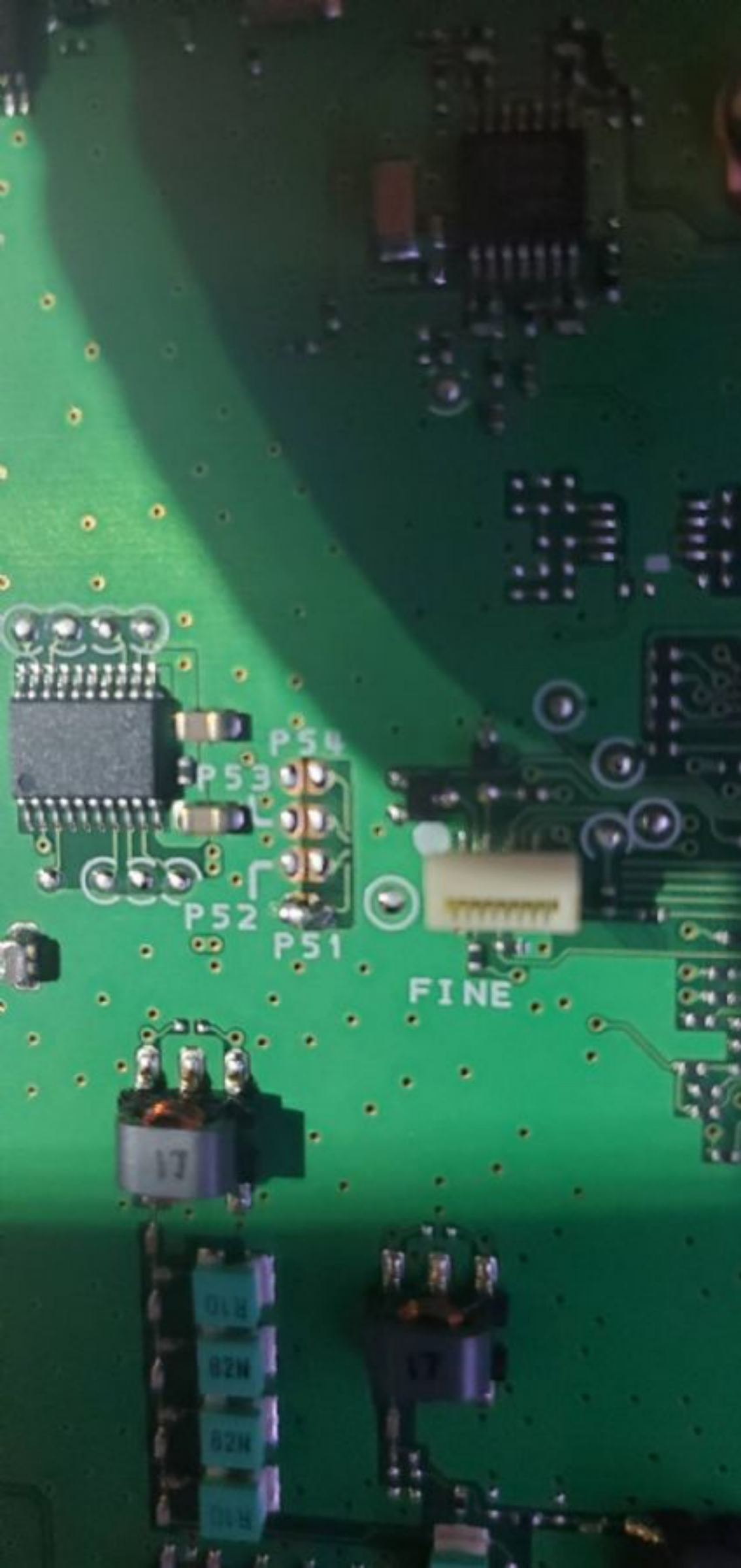












FINE

P54  
P53  
P52  
P51

R10

M28

M28

R10

## **Modification Procedure:**

<Modifications and how to start>

Access the Main Unit by removing the Bottom Case.

Solder a short at the P51 pad in the red box, see the below image.

You're done!

### **Starting method:**

If you turn on the power while holding down the [DSP RESET] key and [FINE/FAST] key in same way as ALL RESET, it will start in the MARS/CAP specification with an extended transmission frequency.

### **Confirmation method:**

Press [FUNC] to display the Menu.

Select [EXTENSION SETTING] ⇒ [SOFT VERSION] on the touch panel.

If USA\_MC is displayed on the DST display, the modification is done correctly.

By the way, the USA specification of Normal only shows DST as USA.



**YAESU**

HF/50MHz TRANSCEIVER **FT-710**

LOCK

TUNE

VOX **MOX**

PHONES

D  
MIC

M>V

FUNC

STEP/MCH

DSP

**EXTENSION SETTING**

**DATE&TIME**

MAIN : V01-08

**SD CARD**

DISPLAY : V01-06

**SOFT VERSION**

DSP : V01-00

**CALIBRATION**

SDR : V01-03

**RESET**

DST : USA\_MC

**CERTIFICATION**

**BACK**