

IC-7600 general coverage Transmit

Author: Mike DK1ML

Remove top and bottom Covers an the Handle.

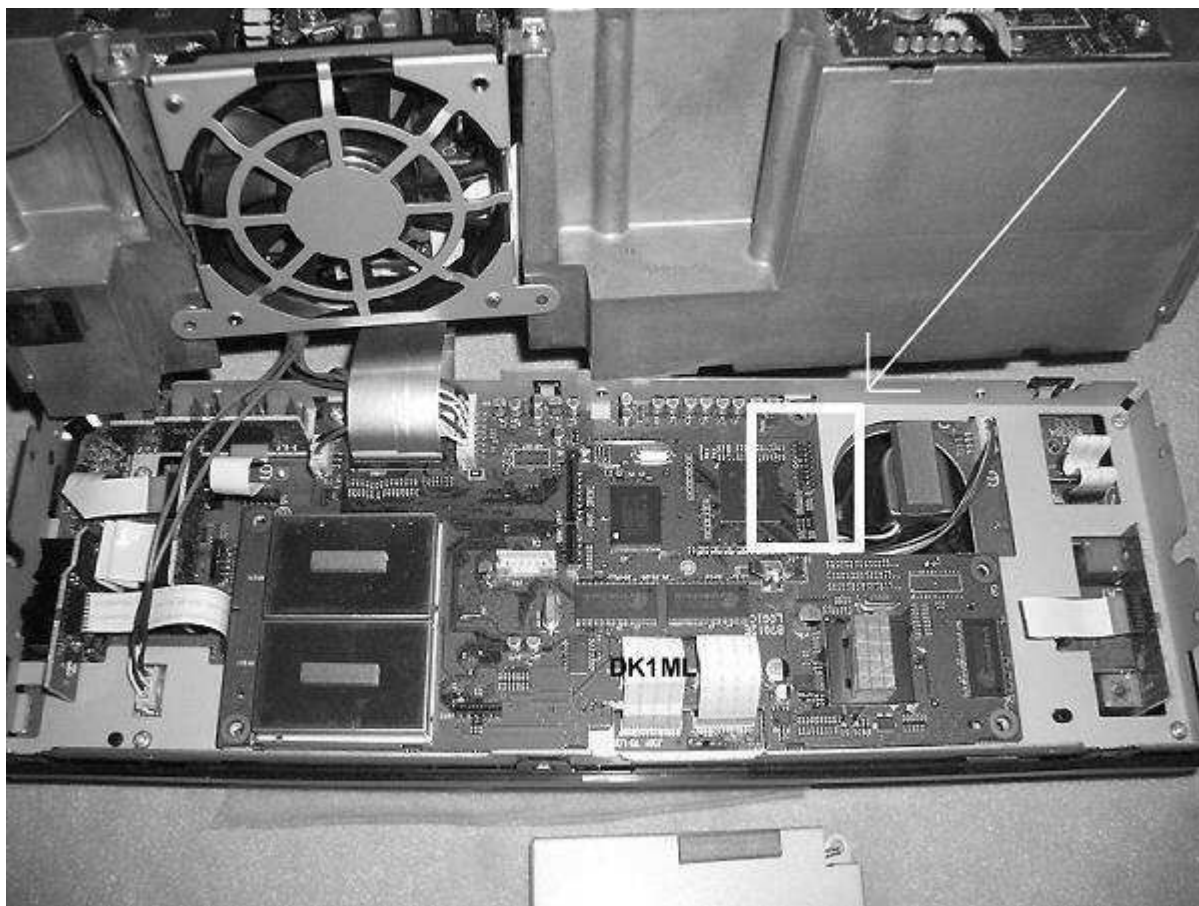
Remove the 4 screws (2 on each side) holding front panel at the main chassis.

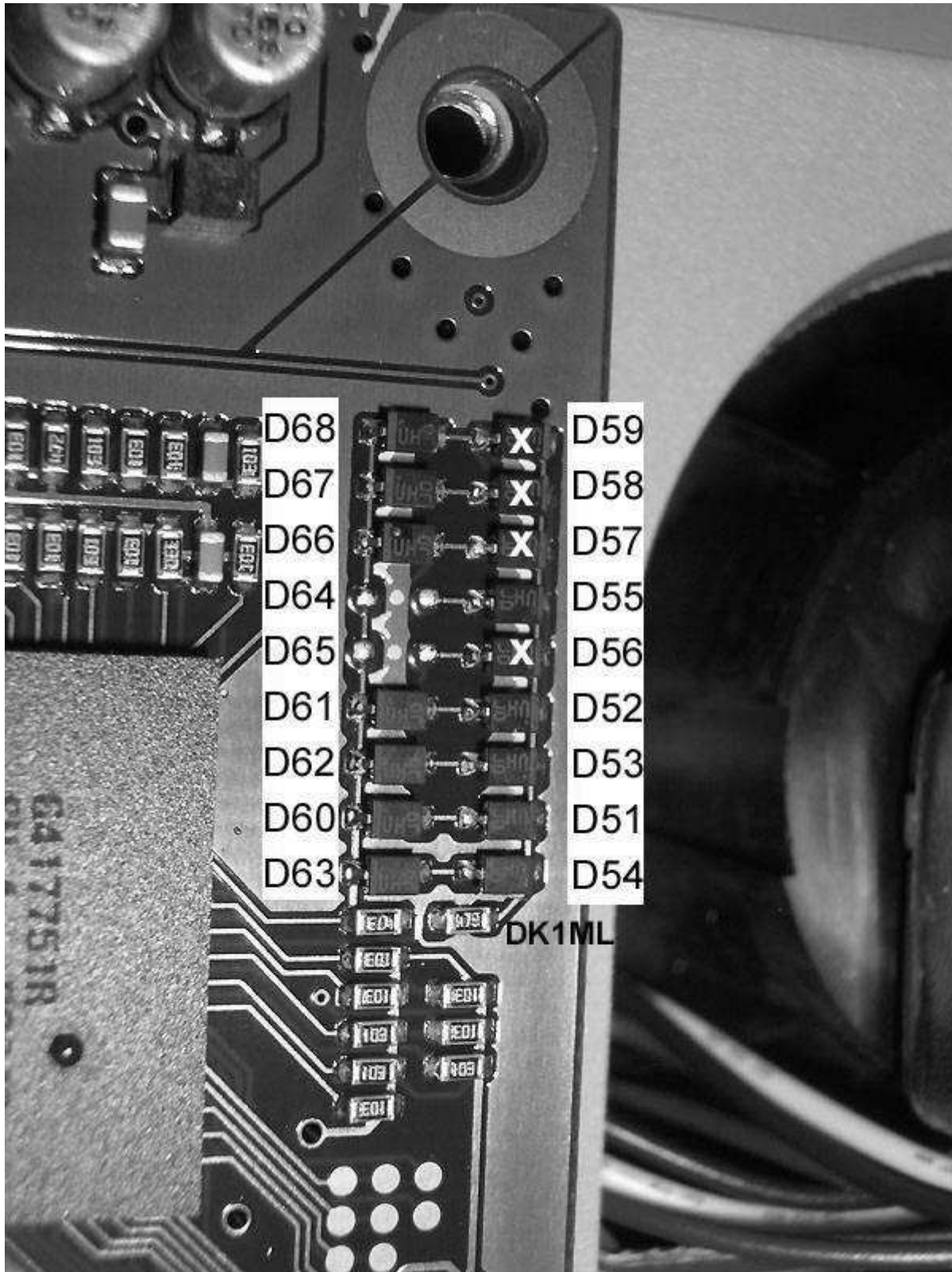
Carefully remove the 4 Connectors to the main Unit.

Remove the metal cover upon the logic Unit (5 screws).

WARNING: The Diodes are not in the correct order (1-9) like in the IC-7700/7800 !!!

You will find the Diodes at the right Corner of the Circuit Board near the Processor Chip and VFO-Knob.





-----Left-----	-----Right-----	>>PCB-End
IMS0 D68 RT50	D59 TXF0 -->remove	
IMS1 D67 DLTX	D58 TXF1 -->remove	
IMS2 D66 MTON	D57 TXF2 -->remove	
IMS4 D64 -EMER	D55 RXF0	
IMS3 D65 -KANA	D56 TXF3 -->remove	
IMS7 D61 +	D52 RXF3	
IMS6 D62 +	D53 RXF2	
IMS8 D60 +	D51 TFRA	
IMS5 D63 PAL	D54 RXF1	

In the EU-Version all Diodes except D64 and D65 are fitted.

> For full TX-Coverage remove D56, D57, D58 and D59.

> For full RX-Coverage remove D52, D53, D54 and D55.

D51 must be always mounted.

No reset is necessary.

Have fun!

Vy 73 de DK1ML Mike