

X54-1300-10 CTR Kenwood

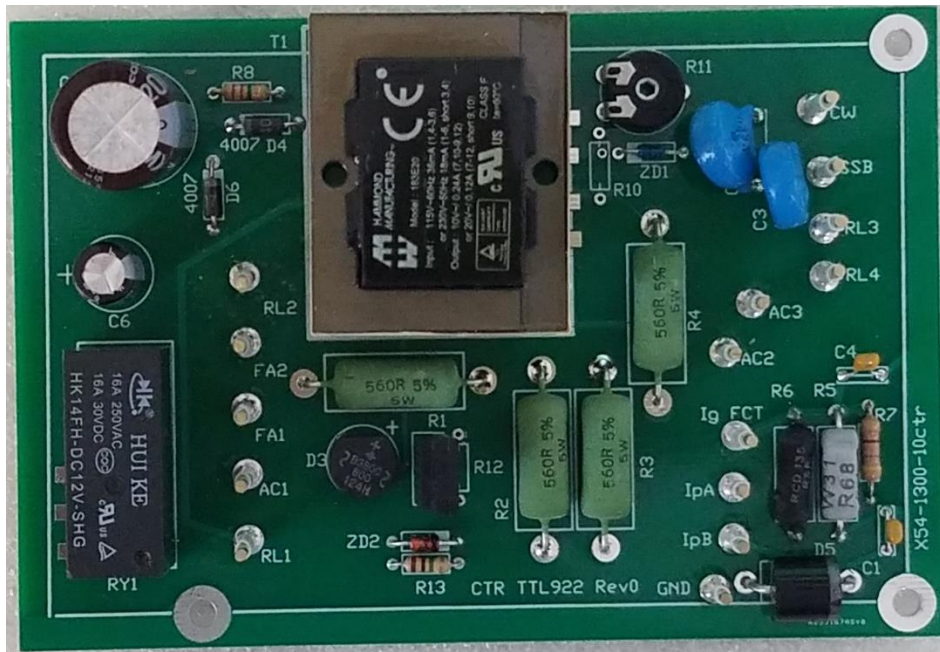
Sept 2022 c W8ji

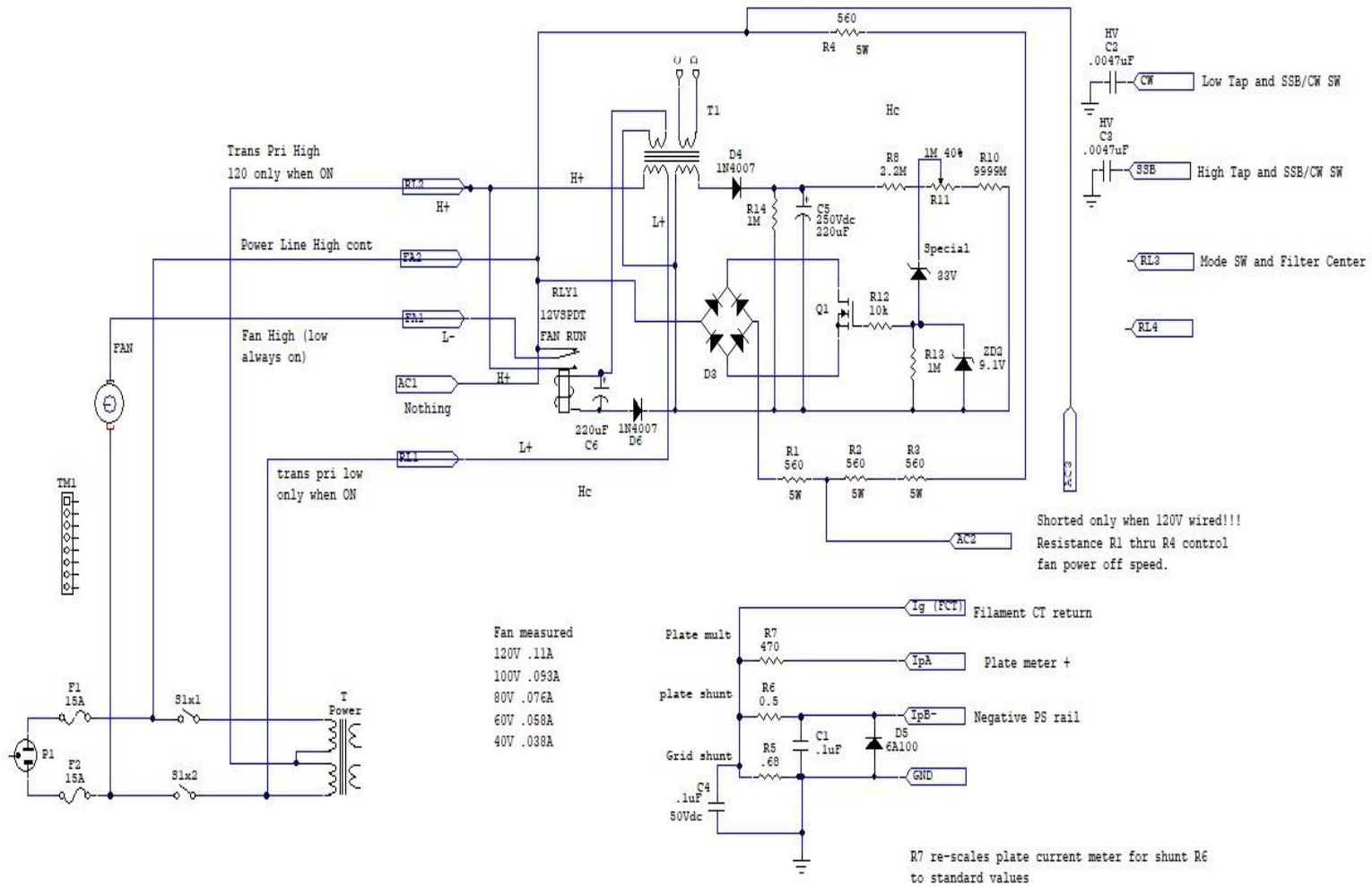
The X54-1300-10CTR is a wire-for-wire direct replacement to the failure prone Kenwood X54-1300-10 board. This board retains the fan delay time function while adding negative rail fault protection. This board does not have the high-low relay provision; that provision was obsoleted by Kenwood due to chronic relay failures. We suggest taking good pictures of the old board and marking wire positions. Some components on this board are intentionally left blank.

Fan off-time run length can be adjusted with R11 and associated resistors. To prevent over temperature on the anode seal, I recommend full cooldown time when using graphite anode tubes.

To reduce voltage on the meter shunt and allow a rail clamp diode, the X54-1300-10CTR resizes plate current shunt and meter multiplier resistance values. The meter reads accurately with these new component values.

R1-R4 control fan power down running speed. Do not short resistors when on high power line voltages! Short only when on 130Vac or lower power mains voltage.





REV1 CTR W8JI
6/1/2022