

AT5. AR8. EQUIPMENT SHOWING

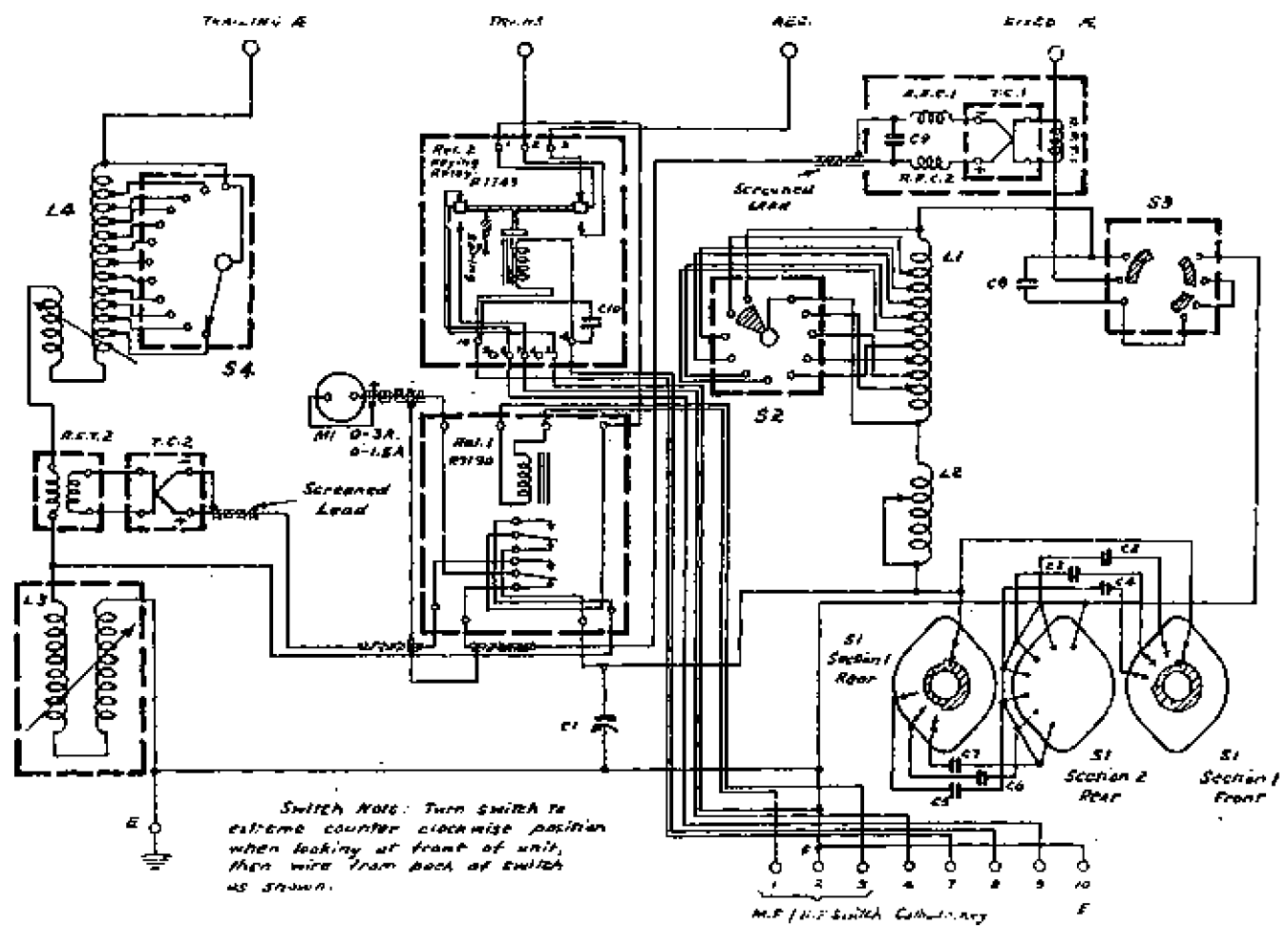
- a *Basic Installation*:- Rec, Trans, Aerial Coupling Unit, Power Unit, Junction Box, Interconnecting cables.
 b *Additional Units and facilities, which can be added when required*.
 Remote Control Unit, Pulse Unit, i/c for 3 outlets in addition to operator and Remote Control Point.

Note:- Cable Identification. Letters A.B.C. etc are assigned to each cable for identifying its position in the interwiring scheme. Various standard lengths are available in each instance. Ref to schedule of cables. Indent No corresponding to each standard length. (Sect 3 Para. 102 Instruction Book.)

MF/HF AIRCRAFT COMMUNICATION
 INSTALLATION AT5/AP8
 PHOTO N° 1704

WIRING DIAGRAM
AERIAL COUPLING UNIT

J7732
7732D12



7732 D12

G.A.T. 30-12-51

TRACAD
G.A.T. 30-12-51

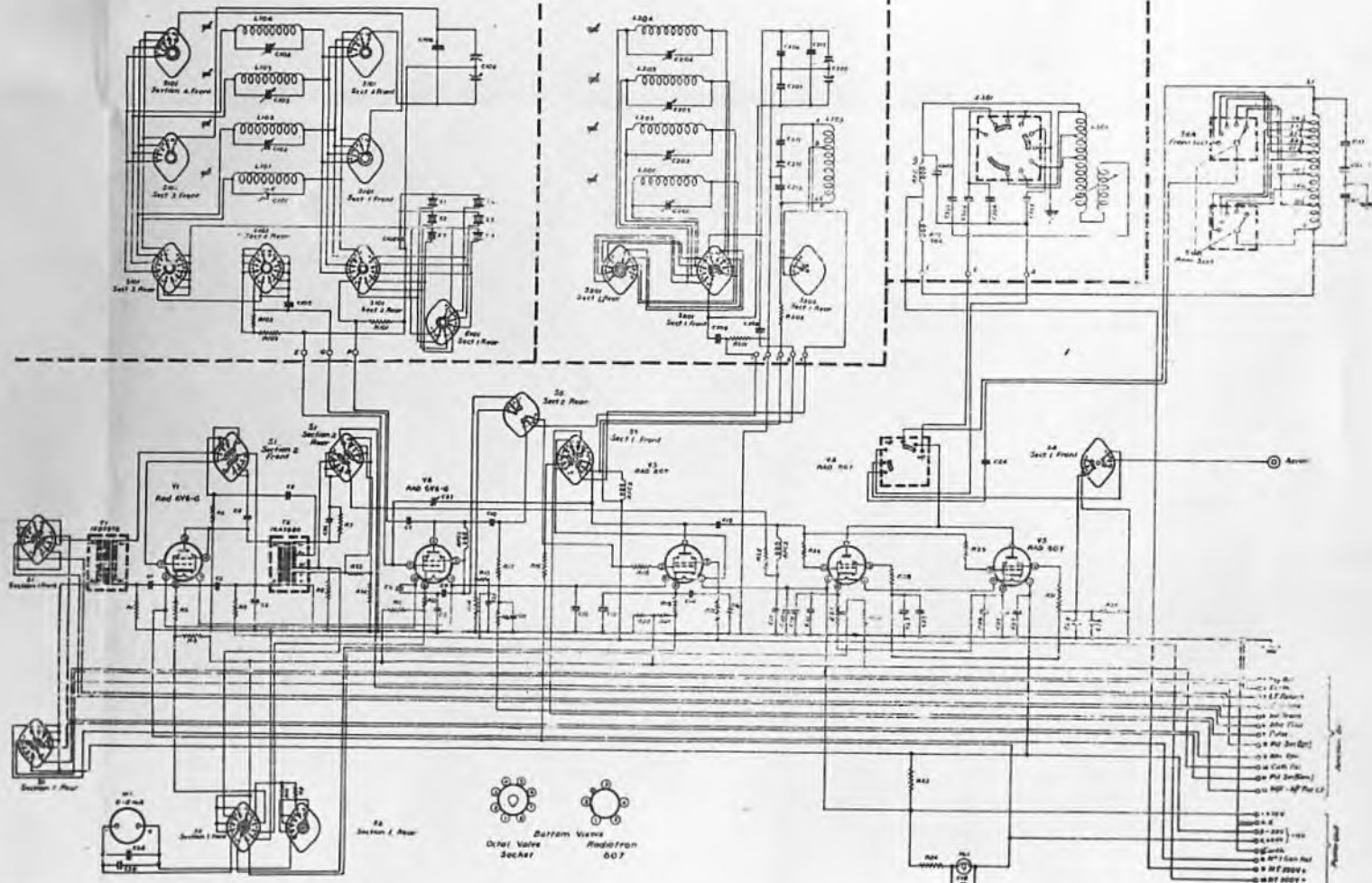
Handwritten notes:
Relay section
0-3A 0-1.5A
M.P. 1112
M.P. 1112

HF OSCILLATOR SECTION
TYPE J773D

HF BA LMF MID TUNING SECTION
TYPE J773D

MF PA SECTION
TYPE J773D

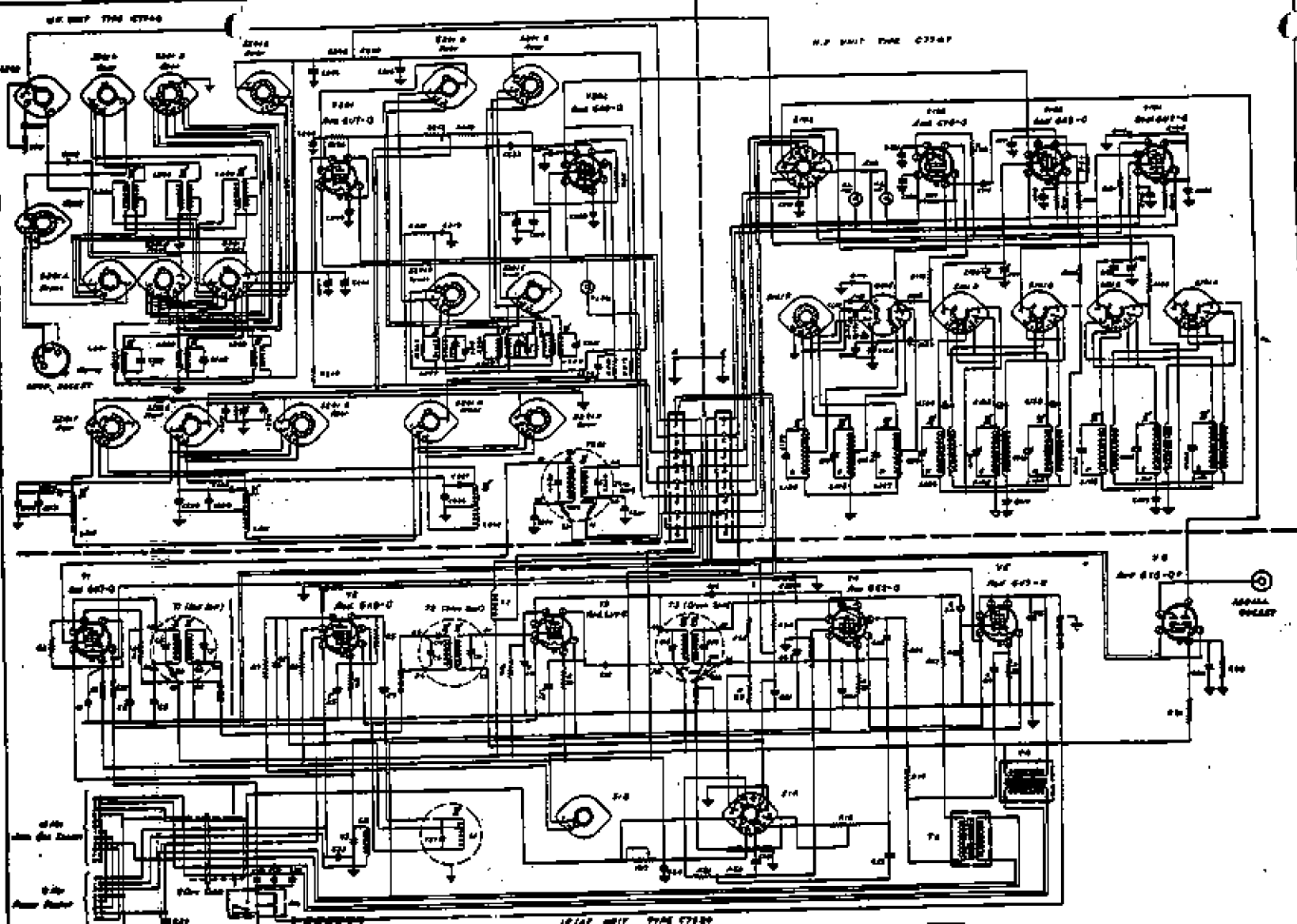
HF PA TUNING SECTION
TYPE V773D



7731A1
REVISION
DATE
BY

WIRING DIAGRAM
TRANSMITTER AT5

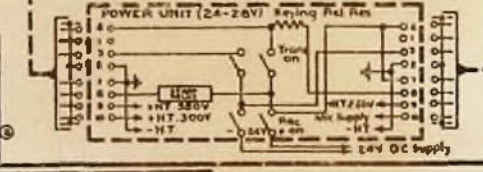
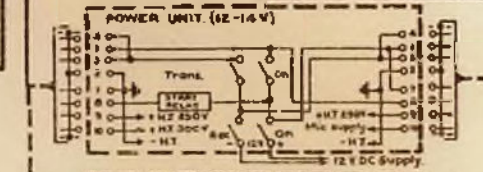
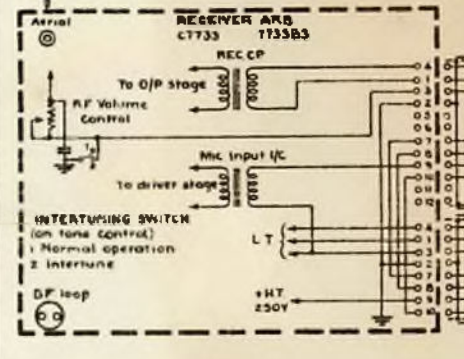
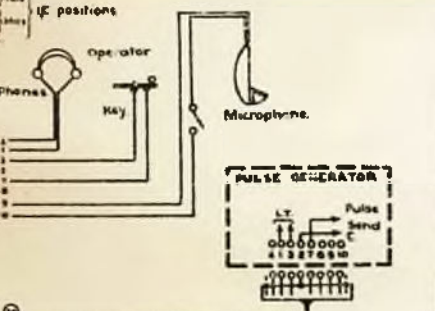
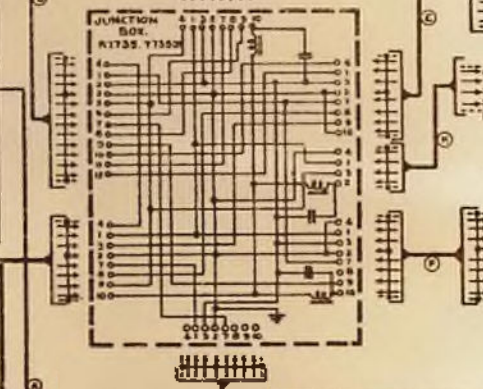
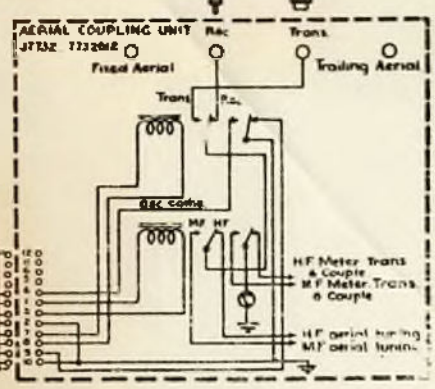
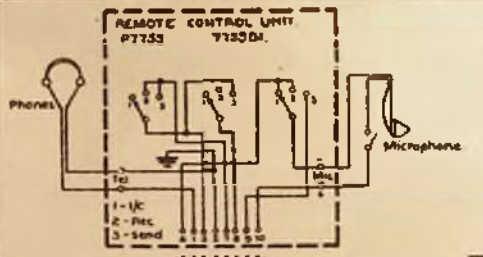
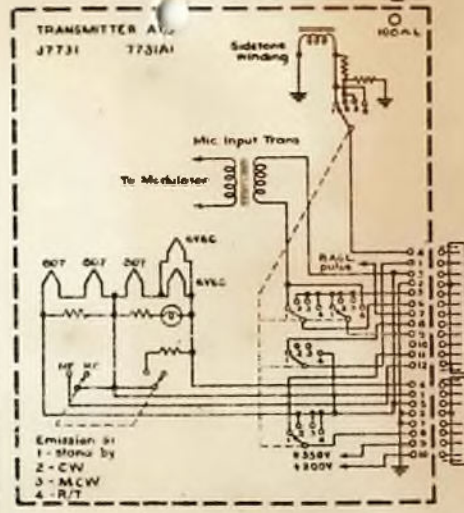
TYF J773D
DWL 7731A1



1. 2. 3. 4. 5. 6. 7. 8. 9. 10. 11. 12. 13. 14. 15. 16. 17. 18. 19. 20. 21. 22. 23. 24. 25. 26. 27. 28. 29. 30. 31. 32. 33. 34. 35. 36. 37. 38. 39. 40. 41. 42. 43. 44. 45. 46. 47. 48. 49. 50. 51. 52. 53. 54. 55. 56. 57. 58. 59. 60. 61. 62. 63. 64. 65. 66. 67. 68. 69. 70. 71. 72. 73. 74. 75. 76. 77. 78. 79. 80. 81. 82. 83. 84. 85. 86. 87. 88. 89. 90. 91. 92. 93. 94. 95. 96. 97. 98. 99. 100.

ANALOGOUS WIRING
 WIRING DIAGRAM
 RECEIVER ARE

| |
|-------------|
| TYPE C7748 |
| DWG. 9743A1 |



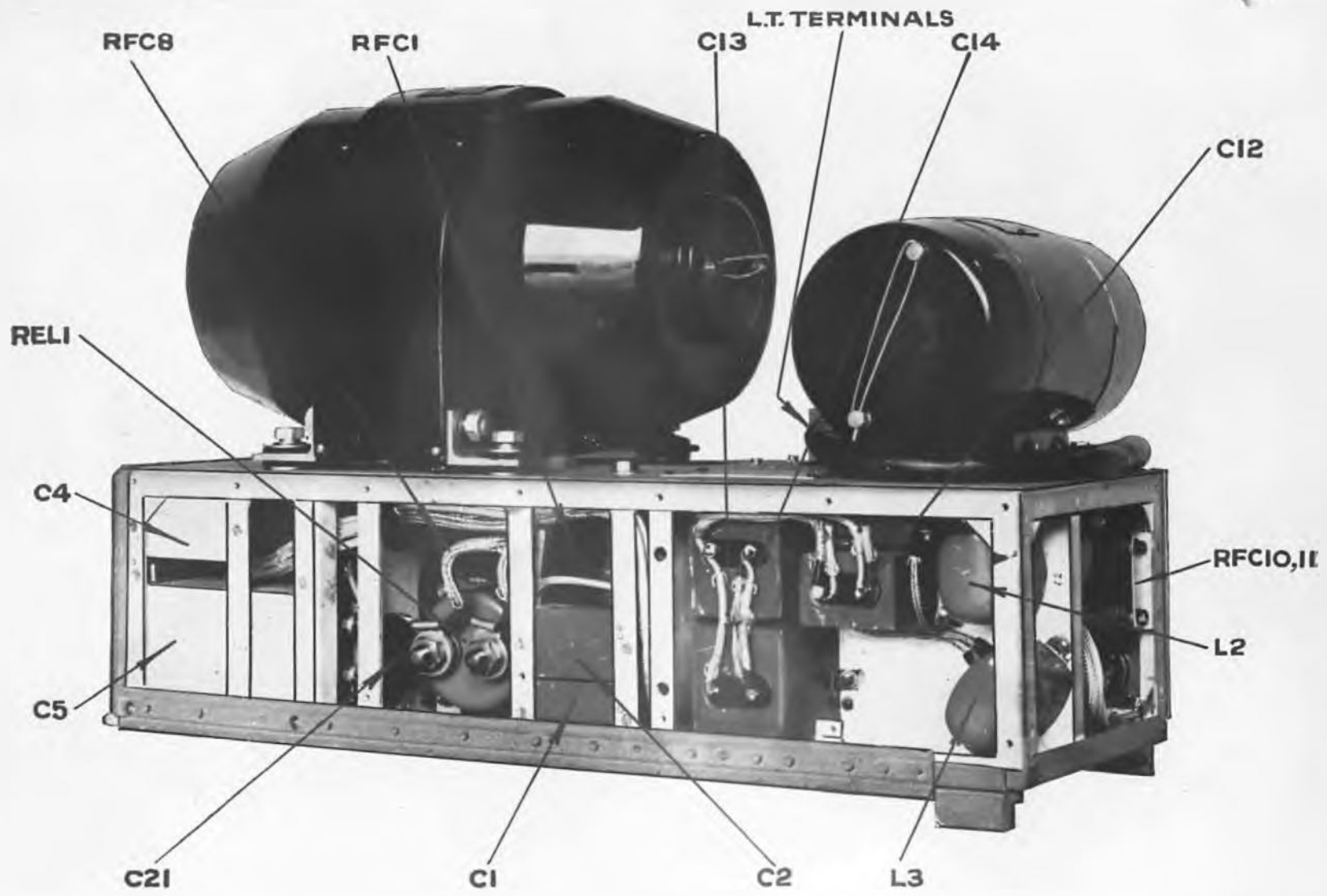
- NOTES**
- 1 When remote control unit is fitted no change in wiring is necessary
 - 2 When pulse generator is not fitted link tags 2 & 7 on pulse outlet
 - 3 Connection code for Plug Y104/00007, Terminal Connecting Cable F



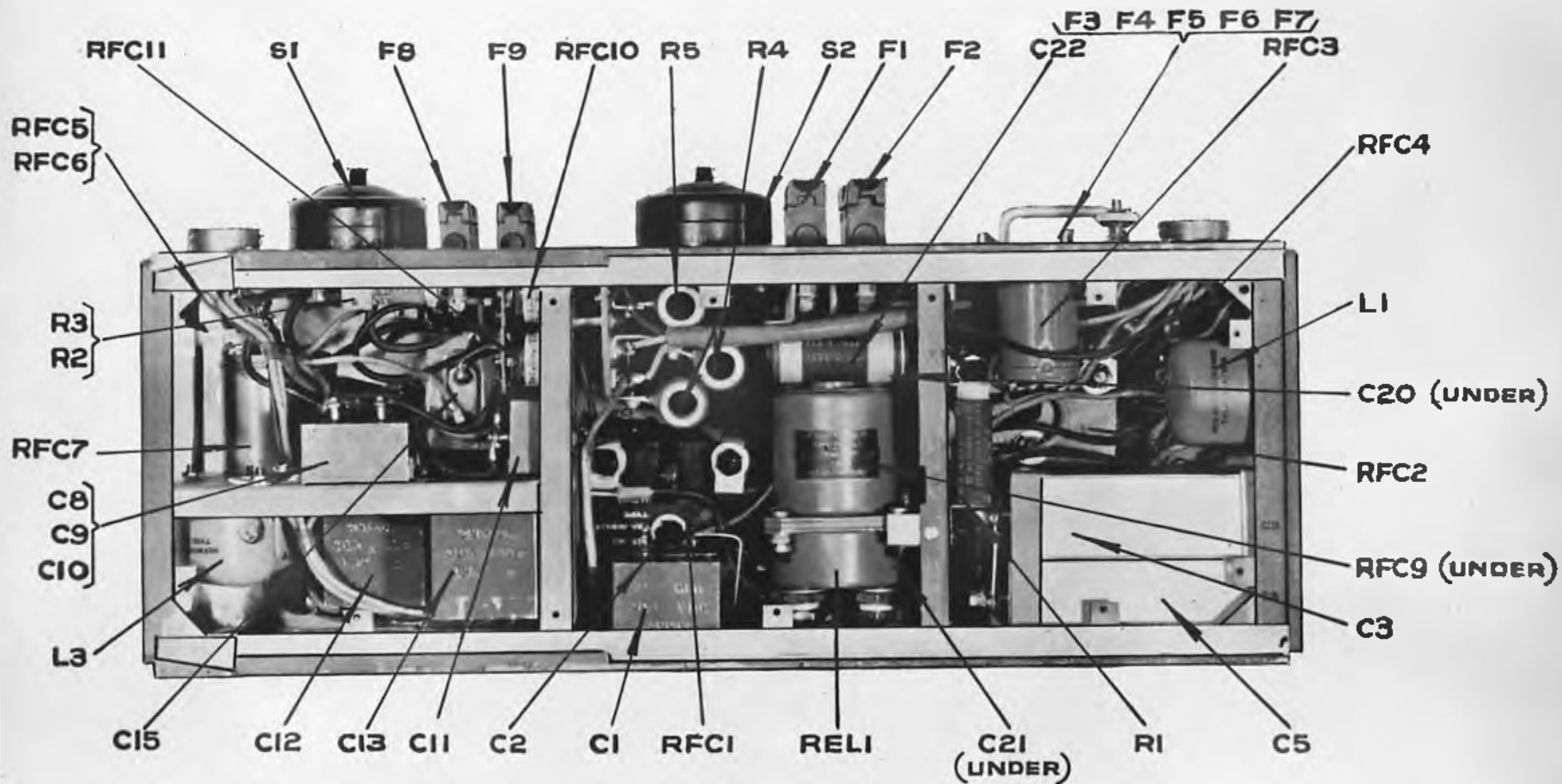
Connection Side of Plug Shown
Pin 1 Tel., Pin 2 & 4 Tel. Pin 3 Key, Pin 7 Key.
Pin 6 - Mic, Pin 8 - Mic. Numbers indicate leads of Cable F which connect to pin positions shown.

7730C3
DATE 10.12.51
CHANGES
Reasons & M. added
Previously Dwg. 7730B3
A.J. 10.12.51
Cable F plug attach
Incl. Clad. Wp.
To 1, 2, 4, 7, 8

| | | | |
|--|--|-----------------------------|---------------|
| AMALGAMATED WIRELESS (AUSTRALASIA) LTD. - SYDNEY | | REP. <i>M. J. 10.12.51</i> | IN SHEET REF. |
| INTERWIRING SCHEMATIC DIAGRAM | | DES. <i>C. J. 10.12.51</i> | TYPE 7730 |
| ATS ARB AIRCRAFT EQUIPMENT | | INCR. <i>K. P. 10.12.51</i> | |
| | | CHKD. <i>R. F. 10.12.51</i> | DWG. 7730C3 |
| | | APP. <i>R. F. 10.12.51</i> | |



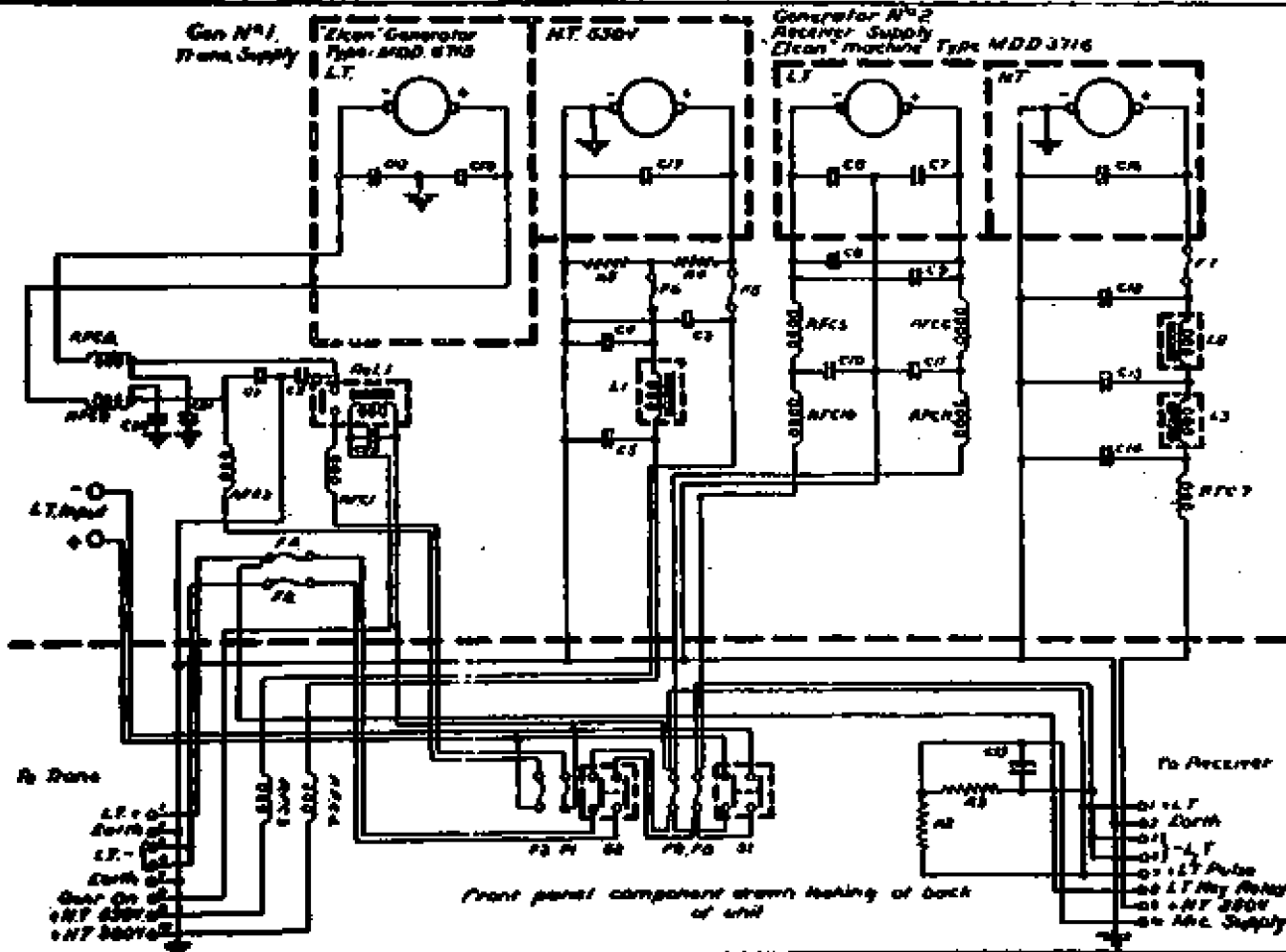
UNIT POWER SUPPLY
PHOTO N° 1706 (Ref. also 1696)



UNIT POWER SUPPLY
 PHOTO N° 1813 (Ref. also 1706)

773409

APPROVED DATE
 9/17 12-8-43
 CRABER



Front panel component drawn looking of back of unit

R Date
 LT 1-1
 2-1
 LT 2-1
 2-2
 2-3
 2-4
 2-5
 2-6
 2-7
 2-8
 2-9
 2-10

To Receiver
 01 - LT
 02 - 20mH
 03 - LT
 04 - LT Pulse
 05 - LT My Relay
 06 - HT 550V
 07 - A.C. Supply

AMALGAMATED WIRELESS
 (AUSTRALASIA) LTD. STONEY
 CREEK

SCHEMATIC DIAGRAM
 POWER SUPPLY UNIT
 IN OPERATION.

| | | | | | | | | | |
|----|----|----|----|----|----|----|----|----|----|
| 1 | 2 | 3 | 4 | 5 | 6 | 7 | 8 | 9 | 10 |
| 11 | 12 | 13 | 14 | 15 | 16 | 17 | 18 | 19 | 20 |
| 21 | 22 | 23 | 24 | 25 | 26 | 27 | 28 | 29 | 30 |
| 31 | 32 | 33 | 34 | 35 | 36 | 37 | 38 | 39 | 40 |

TYPE 1H7734
 DNR 773409

① M.F. Oscillator Range
Switch and Tuning
140 - 185 kc.
185 - 260
260 - 370
370 - 500

② H.F. Range Selector

③ M.F. H.F. Channel
Selector Switches

④ H.F. Buffer Range.
2 - 5 M.C.
5 - 10 M.c.

⑤ H.F. P.A. Range Switch
and Tuning.
2 - 3.5 Mc.
3.5 - 6.5
6.5 - 10
10 - 20 M.c.

⑥ M.F. P.A. Range Switch
and Tuning.
140 - 180 k.c.
180 - 290
290 - 500

⑦ H.F. Aerial Tuning

⑧ H.F. Aerial Coupling.

⑨ M.F. Aerial Tuning

⑩ M.F. Aerial Coupling

⑪ Meter Switch.

⑫ Operators functional
Control Switch

⑬ H.F. Osc. Ranges and
Crystal selector
2 - 5 Mc.

⑭ Plug in crystals
mount behind
hinged cover

⑮ Beat Osc. Tuning

⑯ Tone Control and
intertuning switch

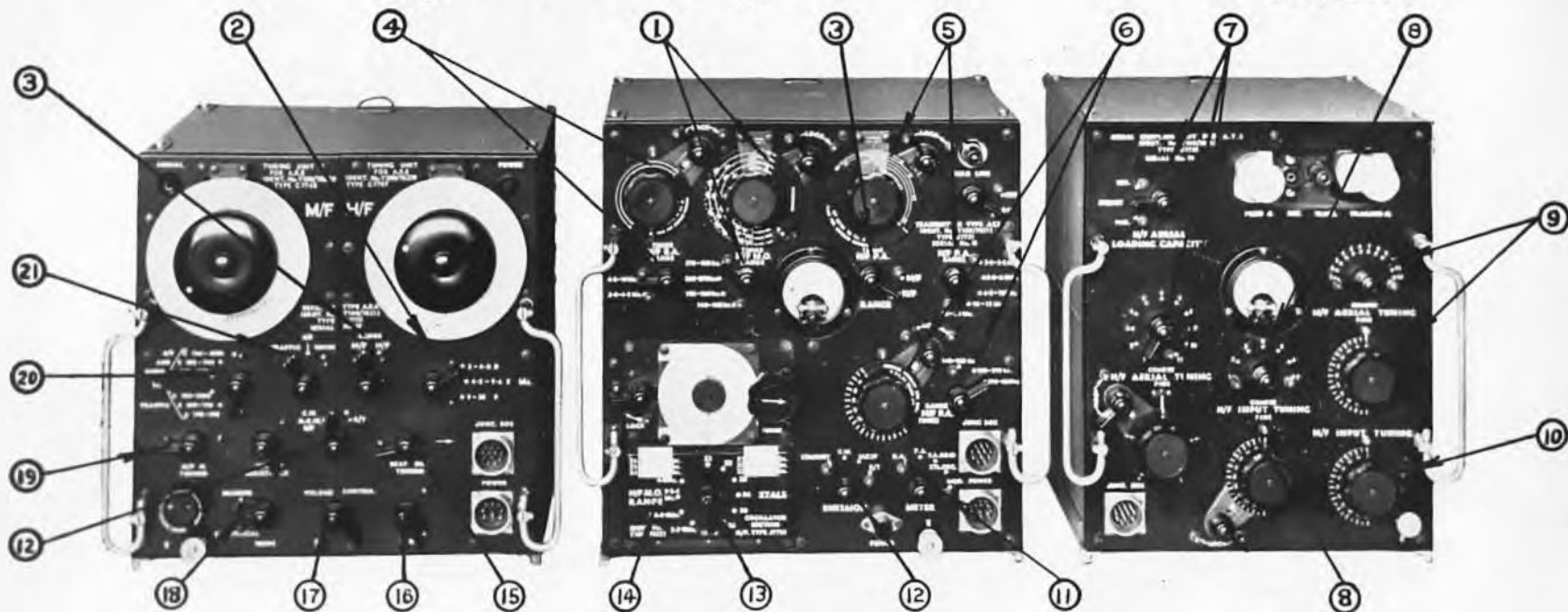
⑰ Volume Control

⑱ Bearing reciprocal
switch

⑲ M.F. Aerial Tuning
Cond.

⑳ M.F. Range
Selector Switch

㉑ D.F. Traffic
Selector



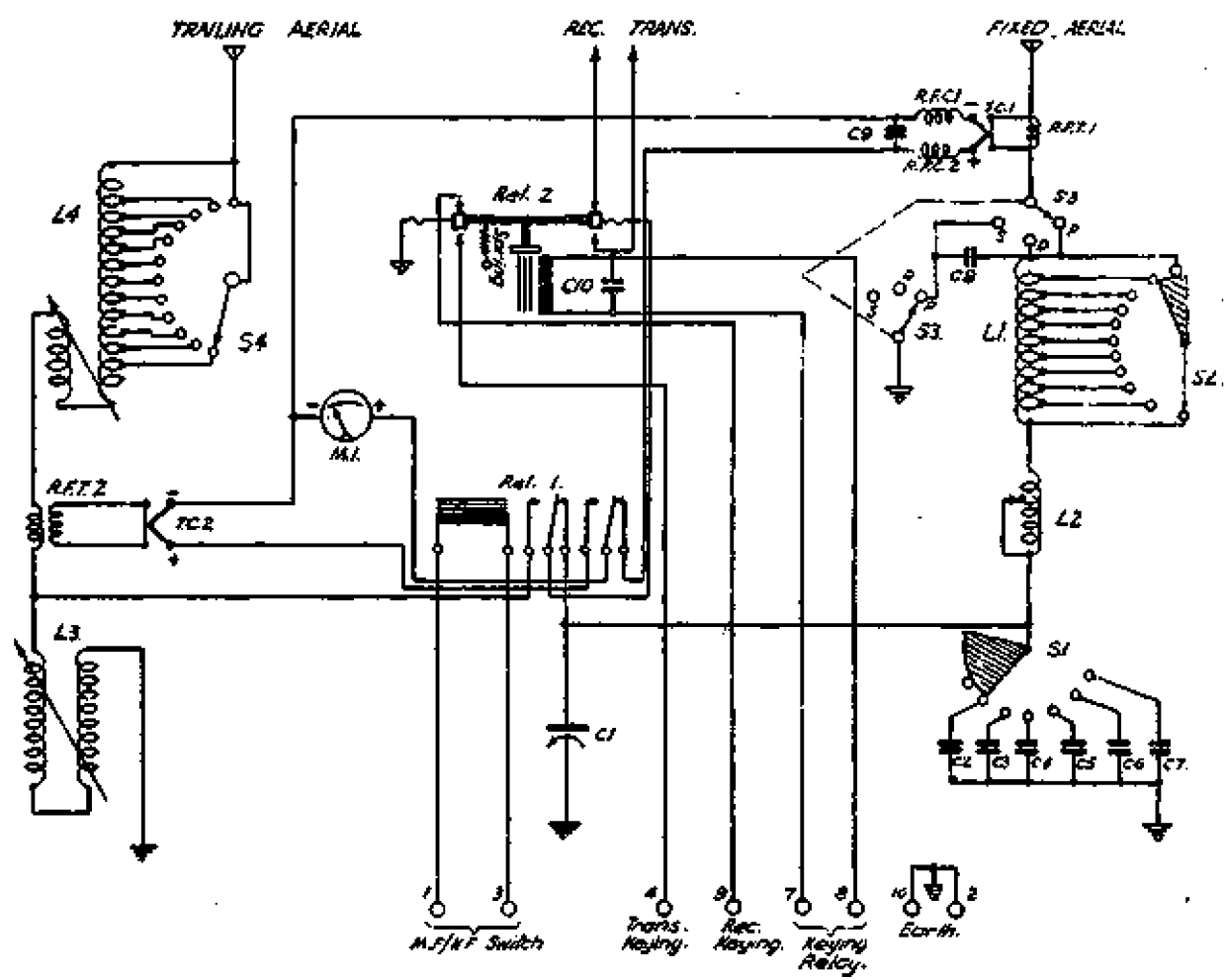
RECEIVER

TRANSMITTER

AERIAL COUPLING UNIT

PHOTO N° 1776

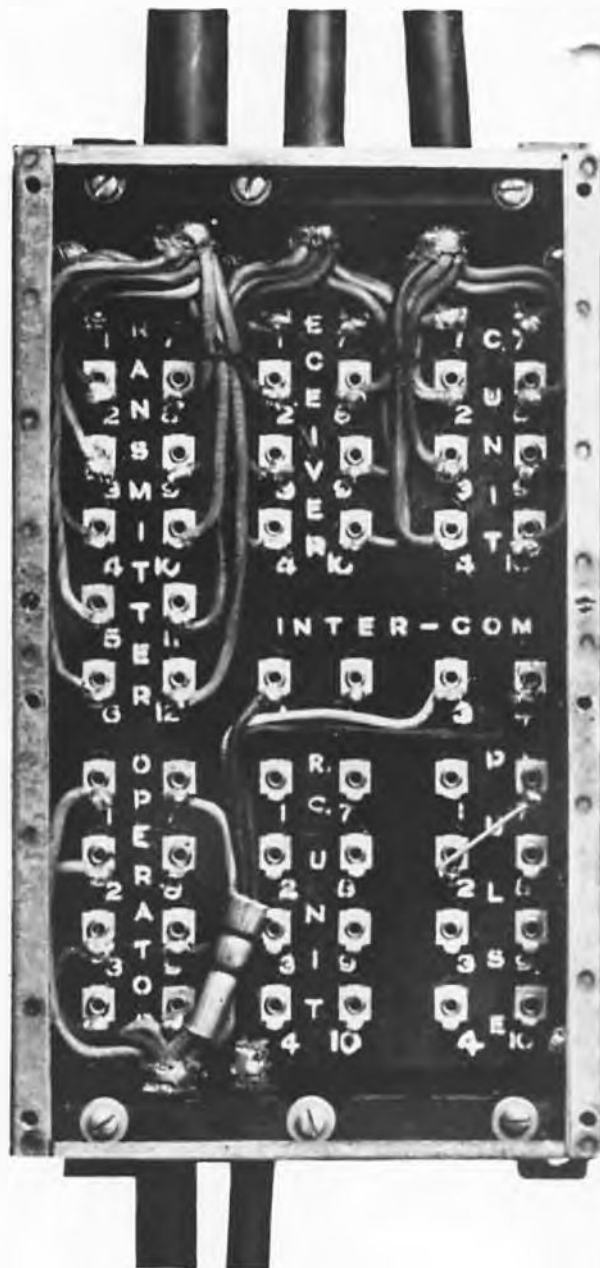
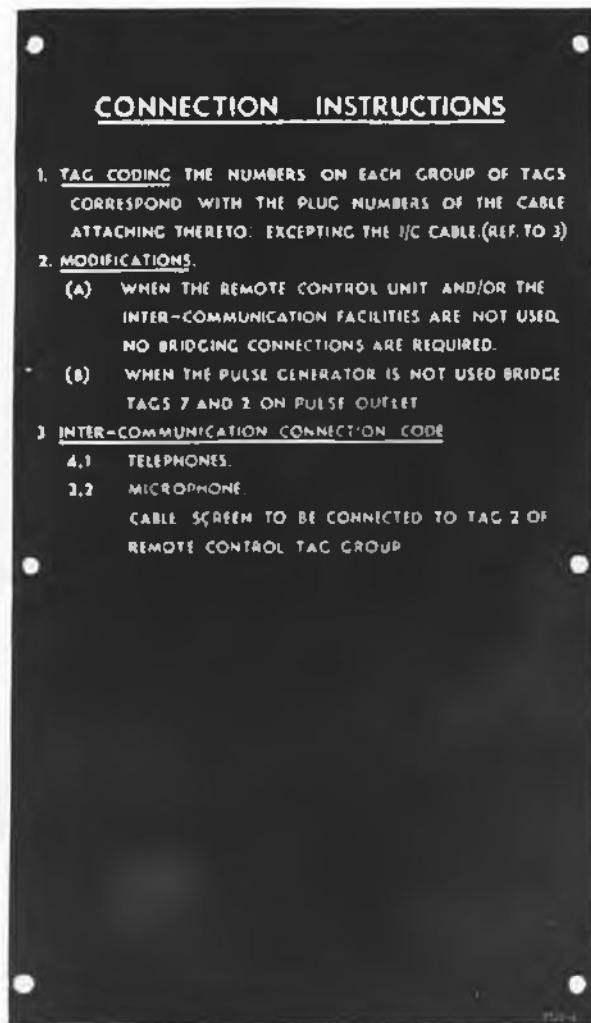
7732D13



AMALGAMATED WIRELESS
AUSTRALASIA, LTD. - SYDNEY

**SCHEMATIC DIAGRAM
AERIAL COUPLING UNIT.**

| | | |
|----------|--------------|--|
| REV. | 1 | |
| DATE | | |
| BY | | |
| CHECKED | | |
| APPROVED | | |
| TYPE | TYPE J7732 | |
| DWG. NO. | DWG. 7732D13 | |



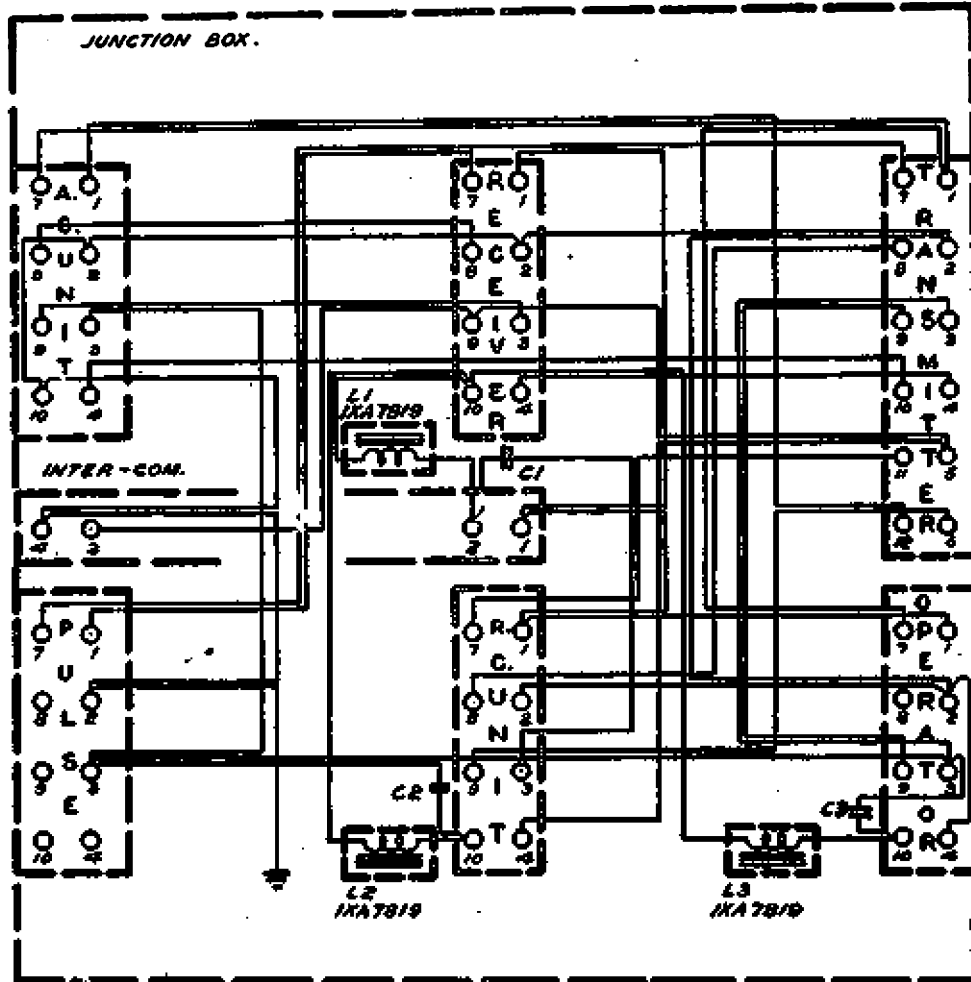
Top view showing inside of cover.

JUNCTION BOX

PHOTO N° 1709 (Ref. also 1705)

7735DI

18 12 41



NOTE:-
Wiring side of terminal panel shown.

AMALGAMATED WIRELESS
(AUSTRALASIA) LTD. - SYDNEY

**SCHEMATIC DIAGRAM
JUNCTION BOX**

| | |
|--------------------|------|
| REF | 1/21 |
| DATE | |
| CYR. | |
| APP | |
| TYPE 7735 | |
| DWG. 7735DI | |