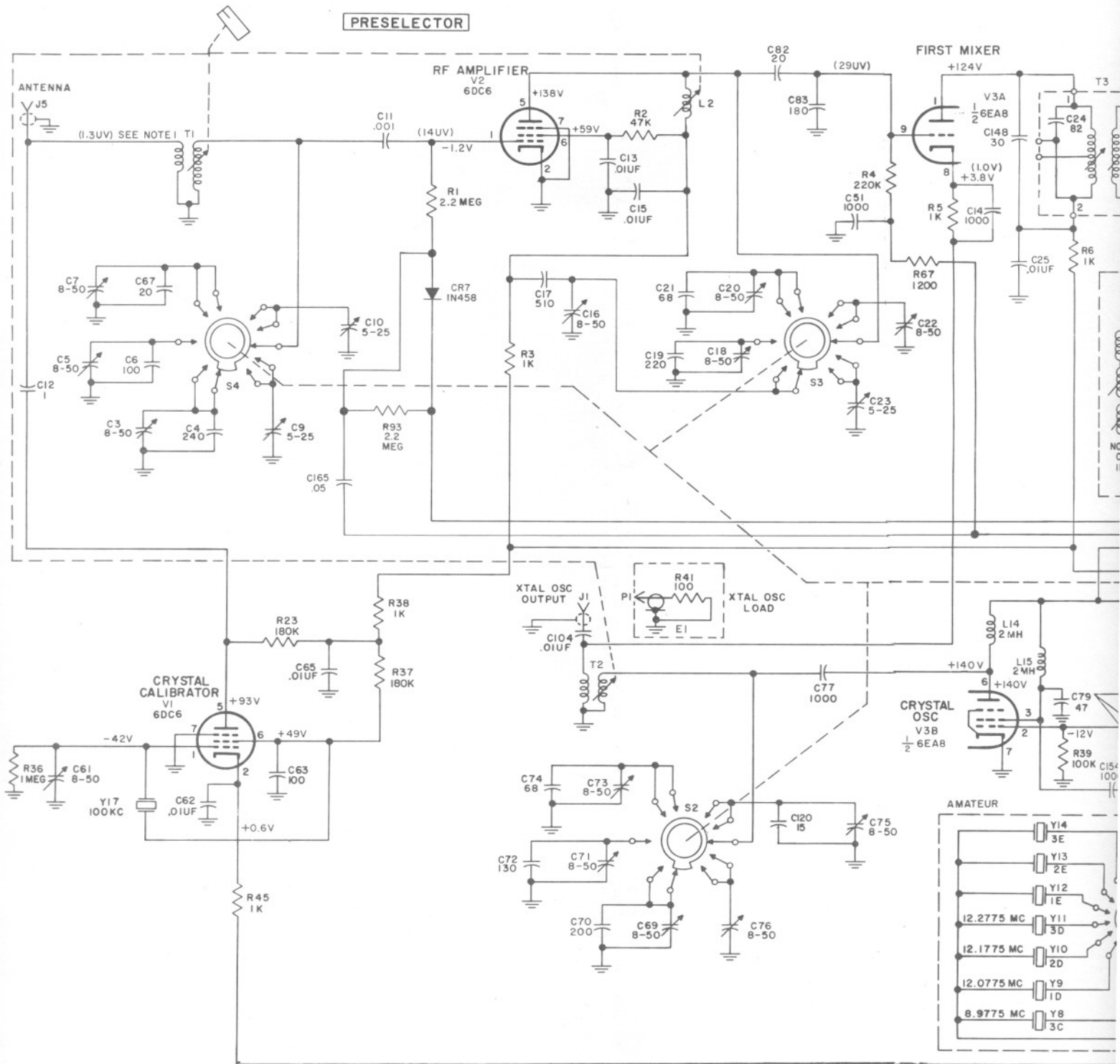
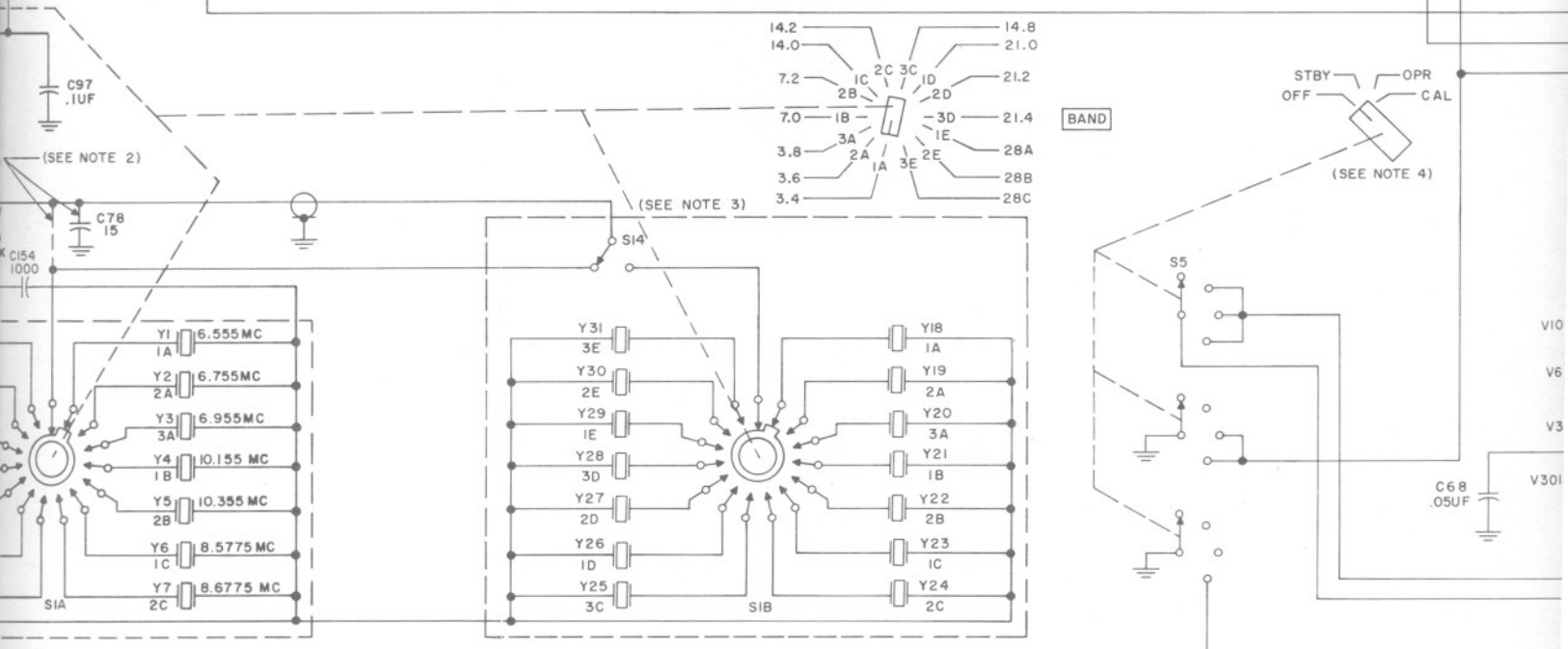
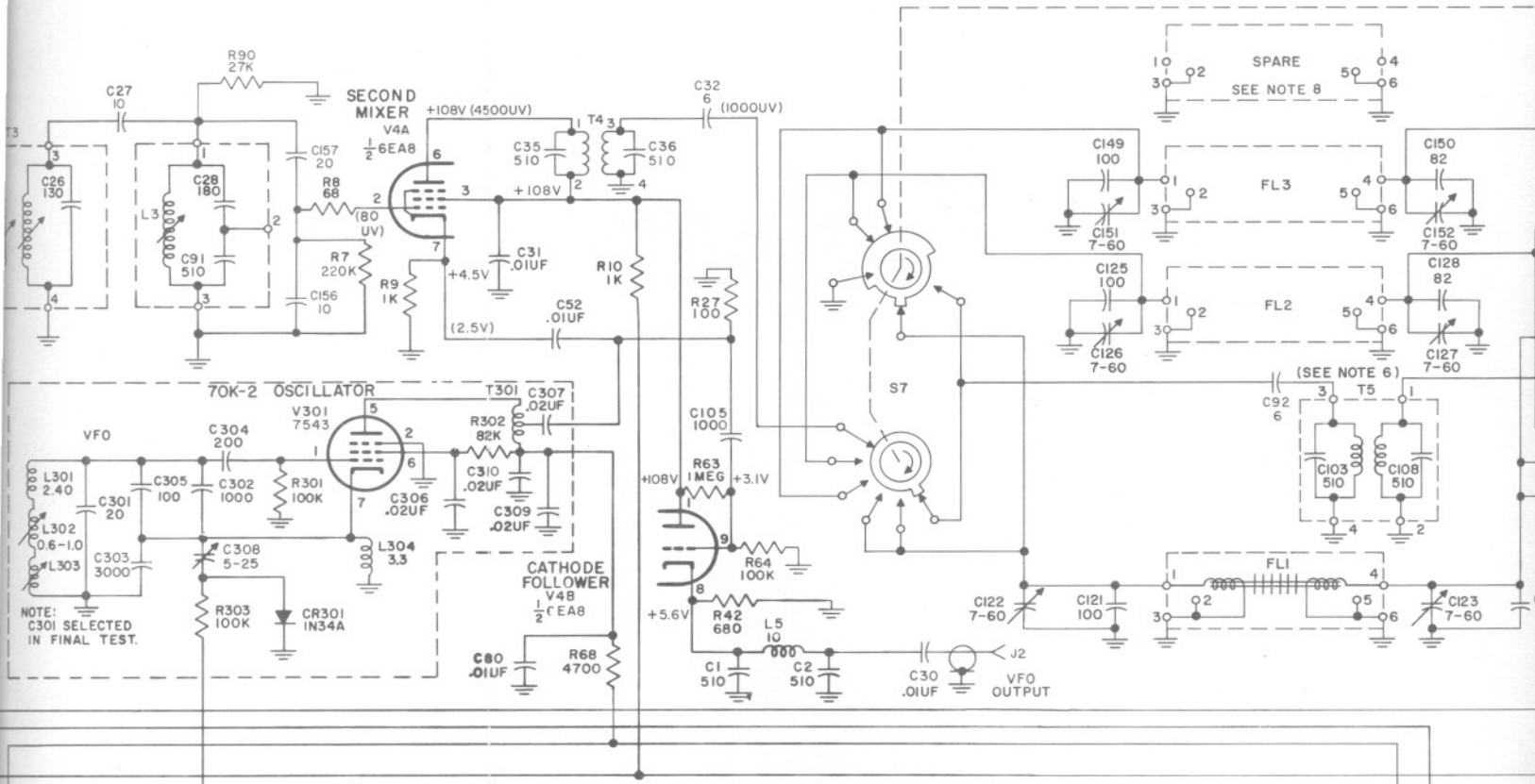


**PRESELECTOR**





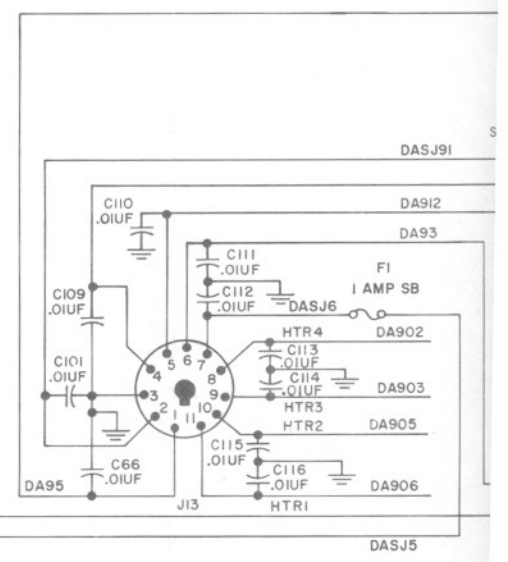
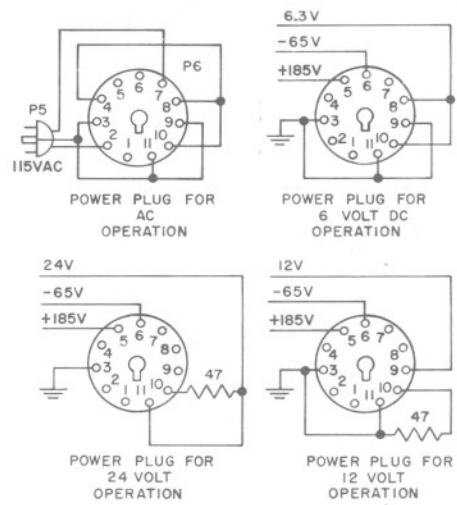
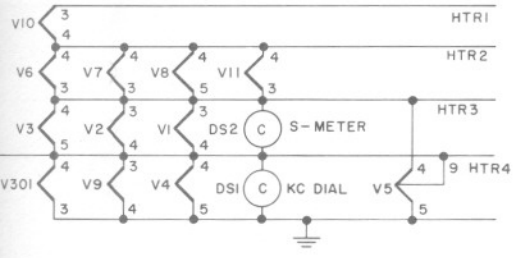
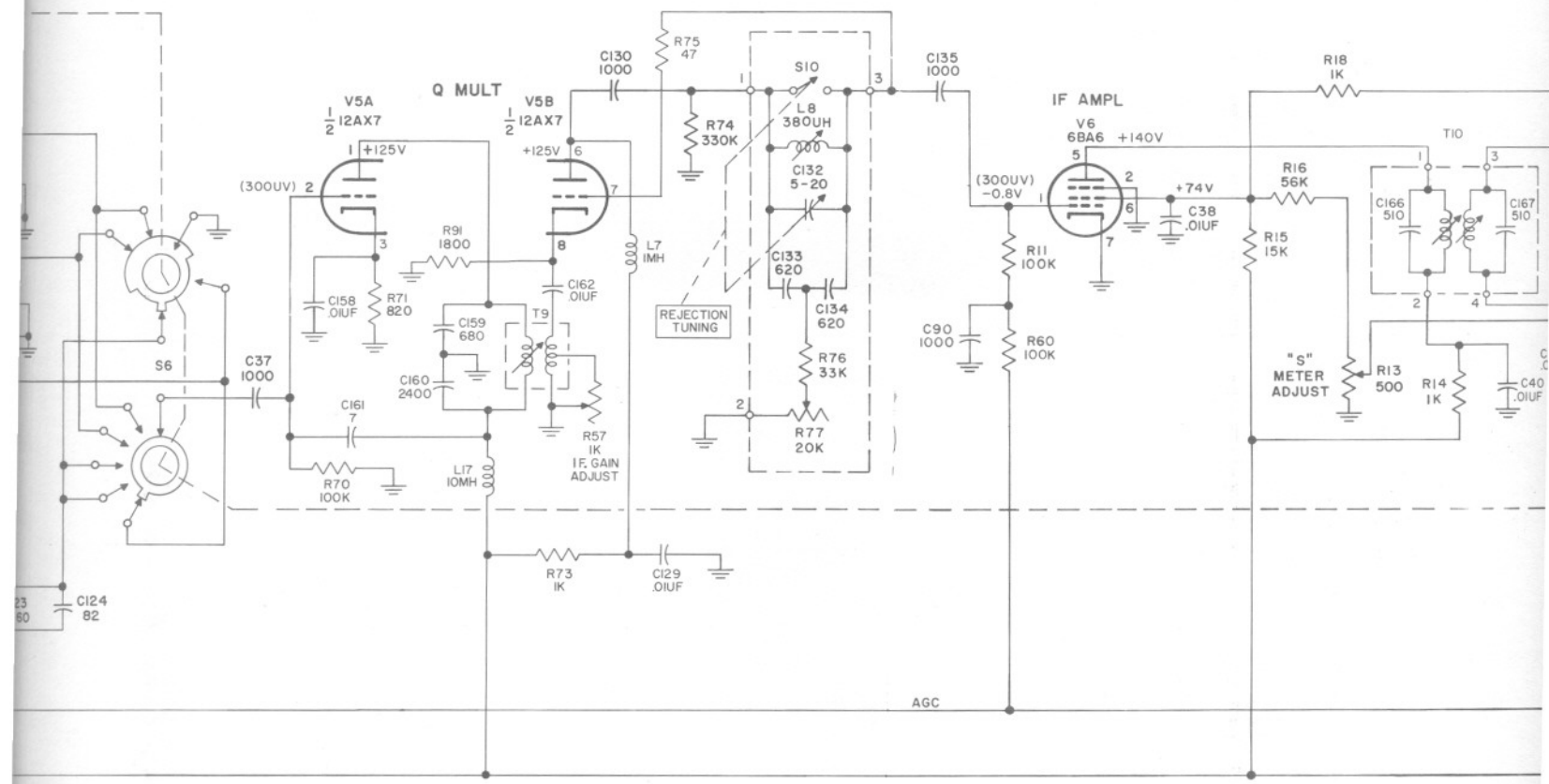
NOTE: C301 SELECTED IN FINAL TEST.

SPARE SEE NOTE 8

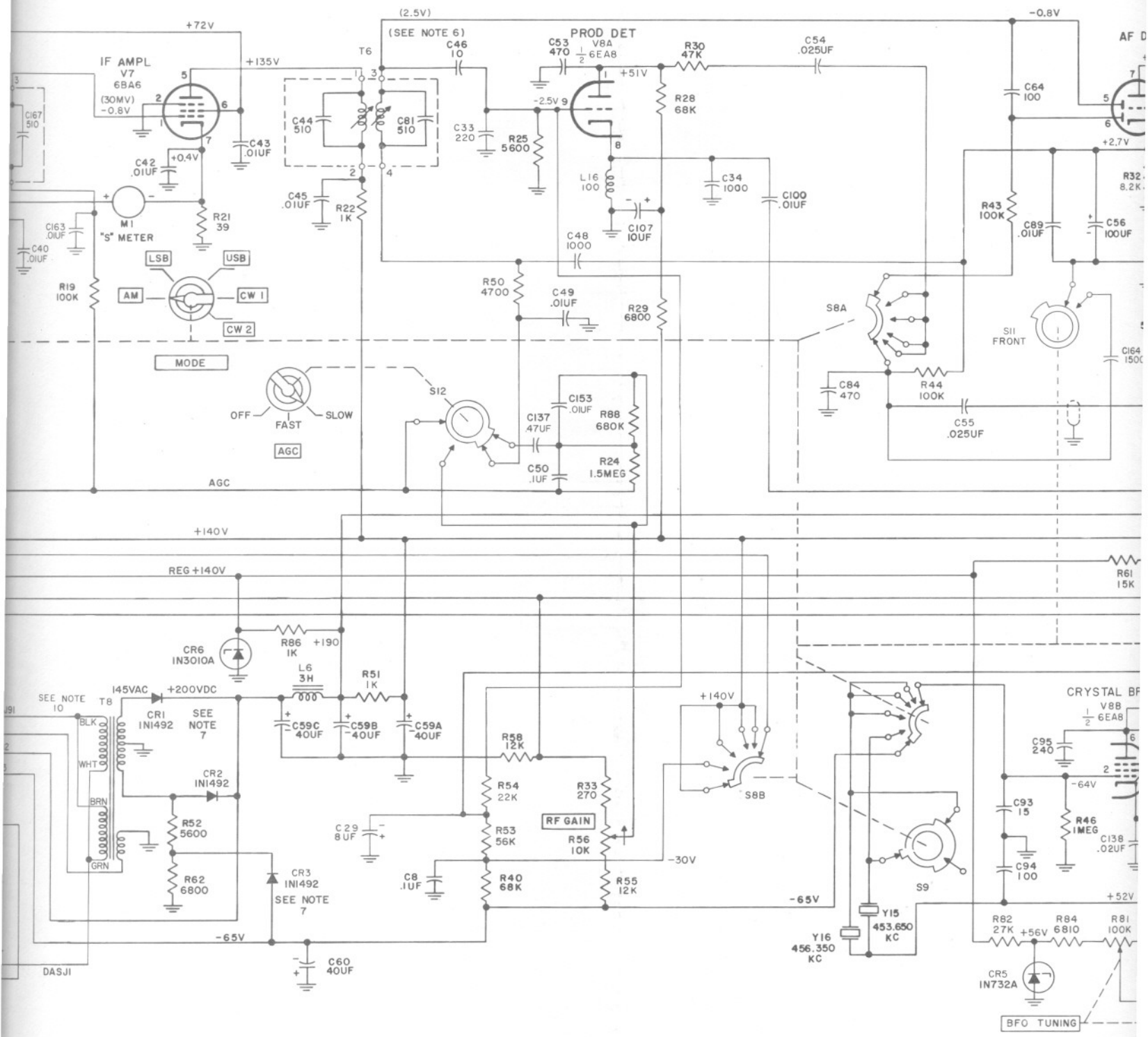
(SEE NOTE 6)

BAND

(SEE NOTE 4)

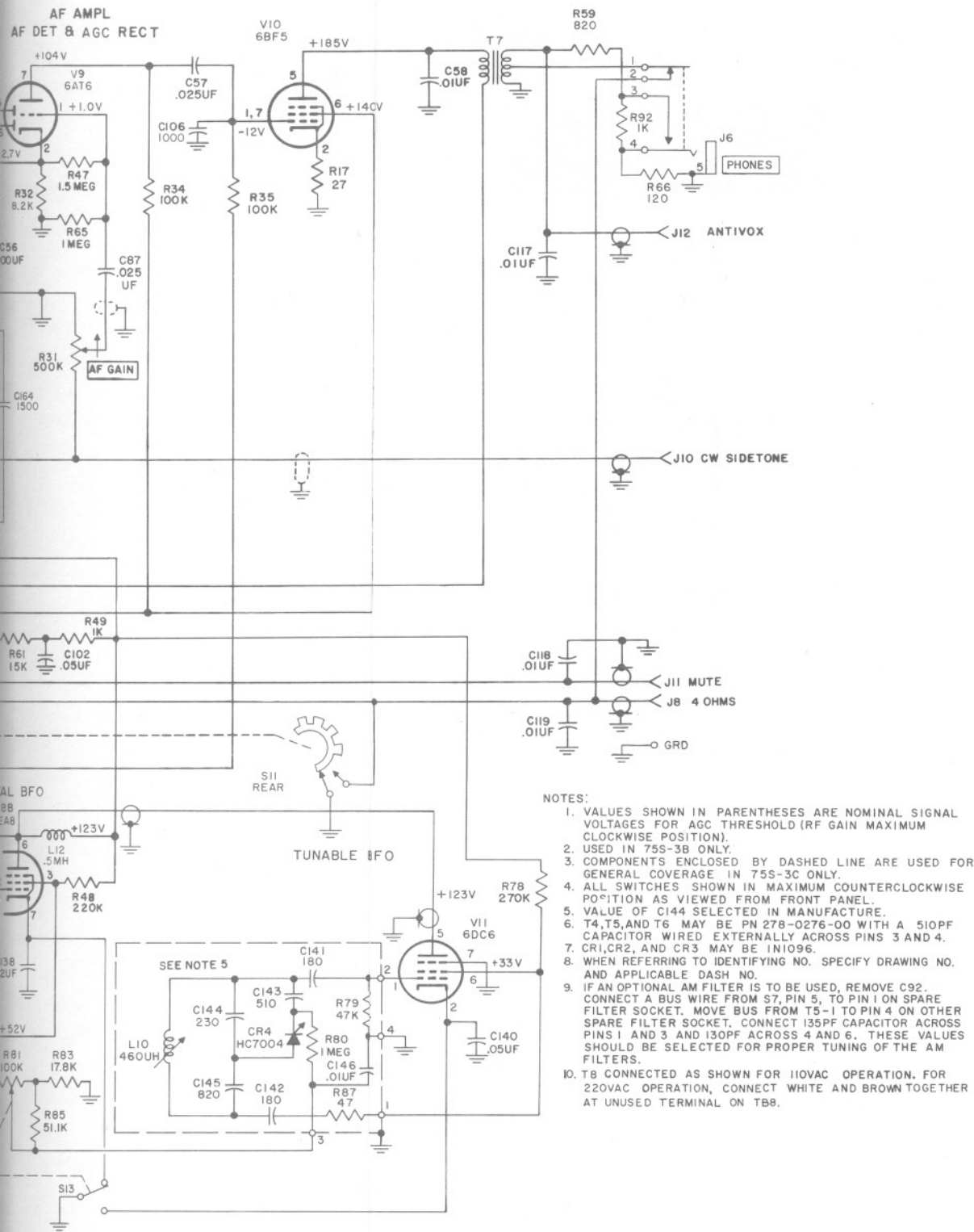


DASJ5



# section 7

## illustrations



**NOTES:**

1. VALUES SHOWN IN PARENTHESES ARE NOMINAL SIGNAL VOLTAGES FOR AGC THRESHOLD (RF GAIN MAXIMUM CLOCKWISE POSITION).
2. USED IN 75S-3B ONLY.
3. COMPONENTS ENCLOSED BY DASHED LINE ARE USED FOR GENERAL COVERAGE IN 75S-3C ONLY.
4. ALL SWITCHES SHOWN IN MAXIMUM COUNTERCLOCKWISE POSITION AS VIEWED FROM FRONT PANEL.
5. VALUE OF C144 SELECTED IN MANUFACTURE.
6. T4, T5, AND T6 MAY BE PN 278-0276-00 WITH A 510PF CAPACITOR WIRED EXTERNALLY ACROSS PINS 3 AND 4.
7. CR1, CR2, AND CR3 MAY BE 1N1096.
8. WHEN REFERRING TO IDENTIFYING NO. SPECIFY DRAWING NO. AND APPLICABLE DASH NO.
9. IF AN OPTIONAL AM FILTER IS TO BE USED, REMOVE C92. CONNECT A BUS WIRE FROM S7, PIN 5, TO PIN 1 ON SPARE FILTER SOCKET. MOVE BUS FROM T5-1 TO PIN 4 ON OTHER SPARE FILTER SOCKET. CONNECT 135PF CAPACITOR ACROSS PINS 1 AND 3 AND 130PF ACROSS 4 AND 6. THESE VALUES SHOULD BE SELECTED FOR PROPER TUNING OF THE AM FILTERS.
10. T8 CONNECTED AS SHOWN FOR 110VAC OPERATION. FOR 220VAC OPERATION, CONNECT WHITE AND BROWN TOGETHER AT UNUSED TERMINAL ON T8B.

Figure 7-1. 75S-3B/3C Receiver, Schematic Diagram