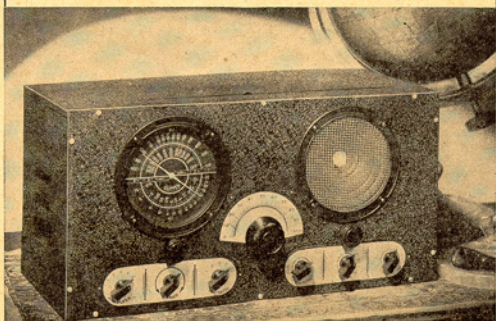


# SUPER-CLIPPER!



## New 7 Tube, 7 Band Receiver

THREE STAGES OF RADIO FREQUENCY AMPLIFICATION  
INCLUDING

### Built-in Signal Booster and Preselector!

HERE IS THE TYPE OF SHORT WAVE RECEIVER YOU HAVE ALWAYS WANTED BUT, PERHAPS, COULD NEVER BEFORE AFFORD. IT IS DESIGNED SPECIFICALLY FOR LONG DISTANCE SHORT WAVE RECEPTION AND HAS THAT EXTRA POWER AND PUNCH WHICH IS OFTEN SO VALUABLE IN BRINGING THROUGH A WEAK DX STATION.

### UNUSUAL DX RECEPTION

The SUPER-CLIPPER of course guarantees you consistent foreign reception; but it goes further than that—you can expect the *unusual* in long distance reception with this big record-breaking receiver. Its circuit utilizes both regeneration and super-regeneration combined with radio frequency amplification. The tube line-up is as follows:—6K7 RF Booster; 6K7 RF; 6K7 Ultra-high RF (separate channel); 6J5 Detector; 6J5 First audio; 6L6G Power output; 80 Rectifier.

Adjustable bandspread which may be set to *any* desired degree is a particularly useful feature. The amateur twenty meter band, for instance, may be spread over the whole 180 degrees of the large bandspread (center) dial if desired; or, if you prefer, you can even put  $\frac{1}{2}$  or  $\frac{1}{4}$  of it over this whole dial. Think what this kind of bandspread means on the crowded foreign broadcast bands! Variable antenna matching permits proper coupling to *any* antenna, giving maximum energy transfer at all frequencies. This is a tremendous help in weak signal reception and is usually found on only a few of the most expensive custom built receivers.

### A Few of Its Many Features:

- ★ Built-in Signal Booster and Preselector which enables the crowded foreign stations to be separated and even the weak ones built up to loud-speaker volume. Covers same range as main tuner and is tuned automatically with it but may be switched out of circuit for stand-by tuning and local high fidelity reception.
- ★ Calibrated reduction drive tuning dial covering from 22 to .54 megacycles (13 to 555 meters) in four overlapping bands controlled by bandswitch (NOT plug-in coils).
- ★ Both electrical and mechanical bandspread entirely eliminating critical tuning on even the weakest foreign stations. A separate bandspread and ultra-high frequency condenser is used.
- ★ Two stages of powerful audio amplification with 6L6 beam power output.
- ★ Separate Ultra-high Frequency R.F. channel (3 to 12 meters) using airwound coils and 6K7 R.F. amplifier. (Separate antenna connection is provided for maximum efficiency).
- ★ Six inch dynamic speaker; Noise and Tone control; Earphone jack, etc.: In fact every worthwhile feature that you have told us you would like to have in your personal receiver.

### The New 1938 Super-Clipper

complete with 7 tubes, ready to plug in to any 110 v. line and operate.....  
Shipping weight 30 lbs. NOT SOLD IN KIT FORM.

**\$29<sup>75</sup>**

WRITE FOR NEW RACO S-W CATALOG!

Kits, receivers, converters, valuable antenna information—everything you'd expect to find in a complete short-wave catalog—at prices astoundingly low. Write today for RACO'S LATEST SHORT-WAVE CATALOG—illustrating and technically describing RACO'S complete line of long distance receivers. Address Dept. SWT-238.



RADIO CONSTRUCTORS LABS.

136 LIBERTY STREET

Dept. SW-21

NEW YORK, N. Y.

**RACO**  
PRODUCTS

